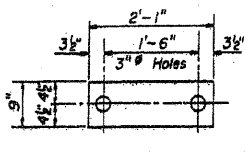
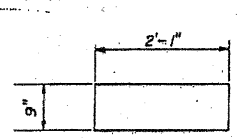


STATE OF ILLINOIS
DEPARTMENT OF TRANSPORTATION

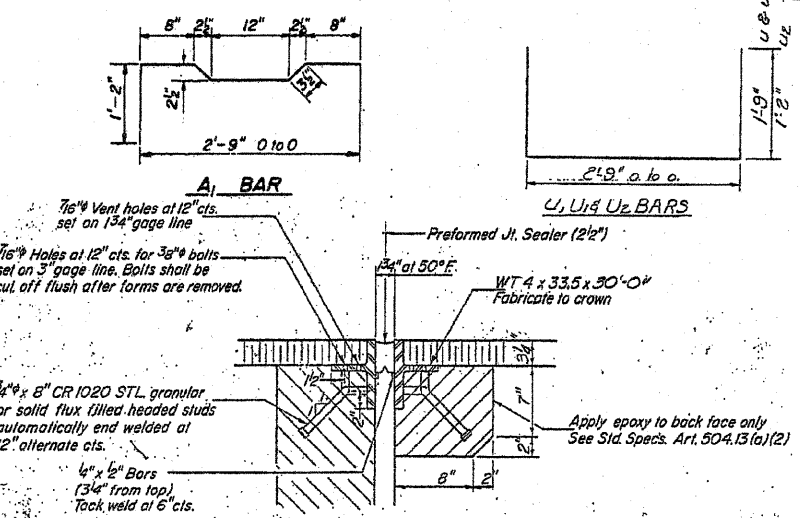
PROJECT NO.	SECTION	COUNTY	TOTAL SHEETS	SHEET NO.	SHEET NO.
CH. 7	MFTBR	WHITESIDE	9	4	7 SHEETS



FABRIC BEARING PAD

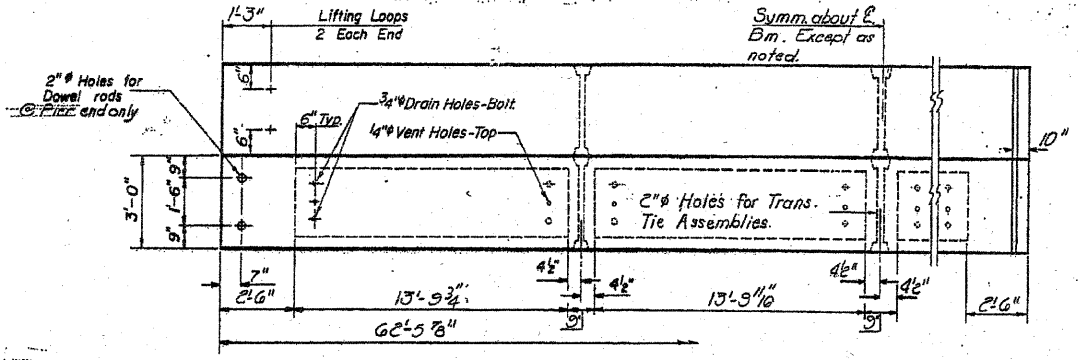


GRAPHITED ASBESTOS BEARING PAD

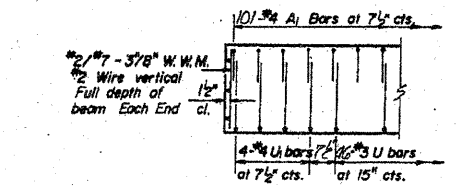


DETAIL "A"

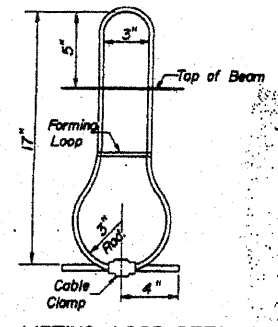
NOTE: Dimensions are at right angles.
Hatched areas to be poured after beams have been erected and joints grouted.
Ends of beams shall be aligned at the expansion joints. Any lineal variation in the beam lengths shall be placed at the fixed joint. See End of Beam Detail for reinforcement.



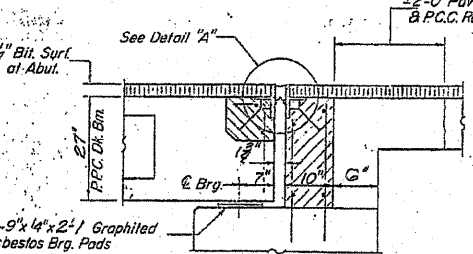
PLAN



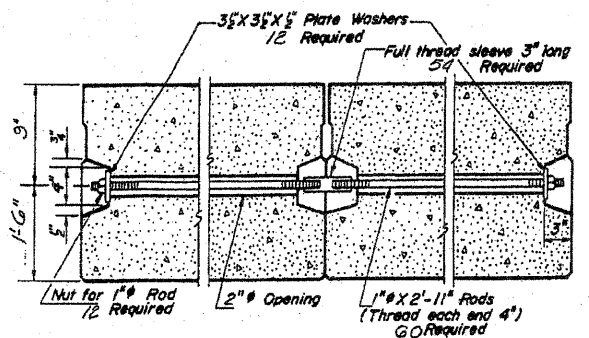
END ELEVATION (FIXED END)



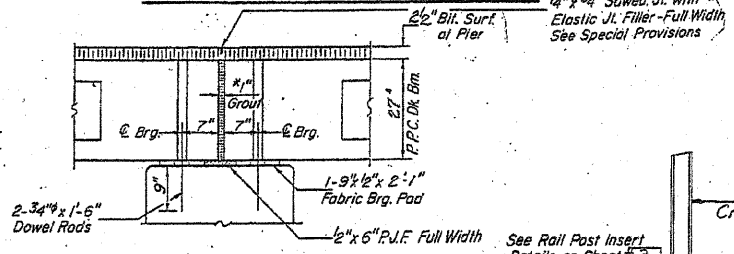
LIFTING LOOP DETAIL



SECTION THRU ABUTS AT ROWY

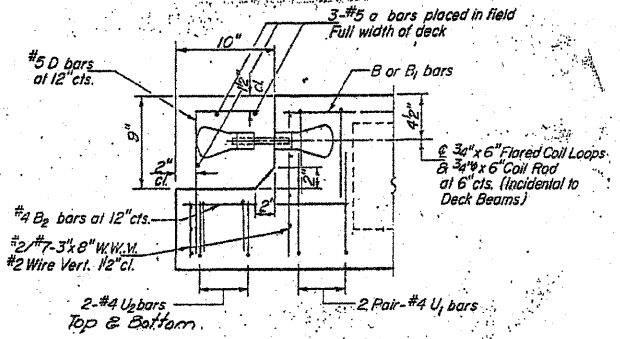


TYPICAL TRANSVERSE TIE ASSEMBLY



SECTION THRU PIER

*1" Joint shall be packed with a very dry mix of 2:1 sand and P.C. mortar. This dimension may vary plus or minus to accommodate tolerance in beam lengths.



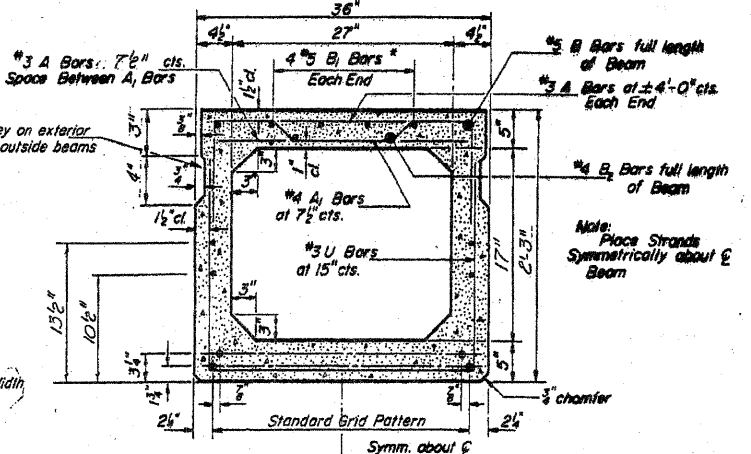
END OF BEAM (EXP. END)

(Dimensions are at right angles)

GENERAL NOTES

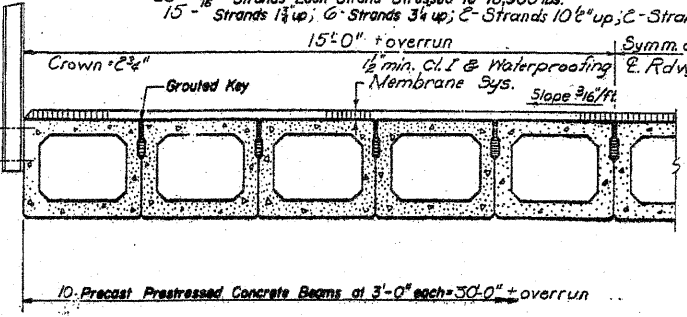
Prestressing steel shall be non-galvanized high strength, stress-relieved 7-wire strand. The nominal diameter shall be 7/16" and the nominal cross-sectional area shall be 0.109 sq. in. Lifting loops shall be 5/8" diameter, 6 x 19 class wire rope with fiber core and shall have a minimum ultimate tensile strength of 33,000 lbs. The 1" rods in the transverse tie assembly shall be tightened to a snug fit and the threads set. Pockets that receive transverse tie bar on an outside beam shall be filled with grout after transverse tie assembly is in place. Longitudinal shear keys shall be packed with a very dry mix of 2:1 sand and P.C. mortar. After beams have been erected, holes for the dowel anchors shall be drilled into the sub-structure and the anchor dowels shall be grouted in place. Dowel rods shall be AASHTO M-227 or M-31. Transverse tie rods shall be AASHTO M-227 Grade 70-80. After fabrication the transverse tie assemblies (tie rods, nuts, washers and sleeves) shall be hot-dipped galvanized in accordance with A. Cast of reinforcement and accessories cast into the beam, of bearing pads, of armor angles, and of grouting longitudinal shear keys is included in unit price bid for Precast Prestressed Concrete Deck Beams.

*.2x length of beam

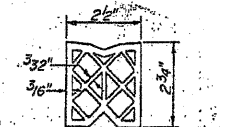


TYPICAL SECTION

25 - 7/16" Strands Each Strand Stressed to 18,900 lbs.
15 - Strands 1 1/2 up; 6 - Strands 3/4 up; 3 - Strands 10 1/2 up; 3 - Strands 13 1/2 up
15'-0" overrun
10. Precast Prestressed Concrete Beams at 3'-0" each = 30'-0" overrun



HALF CROSS SECTION



PREFORMED JOINT SEALER (2 1/2")

BILL OF MATERIAL

Bar	No.	Size	Length	Shape
a	6	#5	29.9"	
Class x Concrete			Cu. Yds.	1.4
Precast Prestressed Concrete Deck Beams (27")			Sq. Ft.	3755
Structural Steel			Lbs.	4210
Reinforcement Bars			Lbs.	190

BEAM DETAILS
C.H. RT. 7, SEC (KB-MFT) BR
WHITESIDE COUNTY
STA. 224+00

DESIGNED: Sel. Fattani
CHECKED: [Signature]
DRAWN: F. Coffin
OCT. 28, 1971
EXAMINED: [Signature]
PASSED: [Signature]
APPROVED: [Signature]