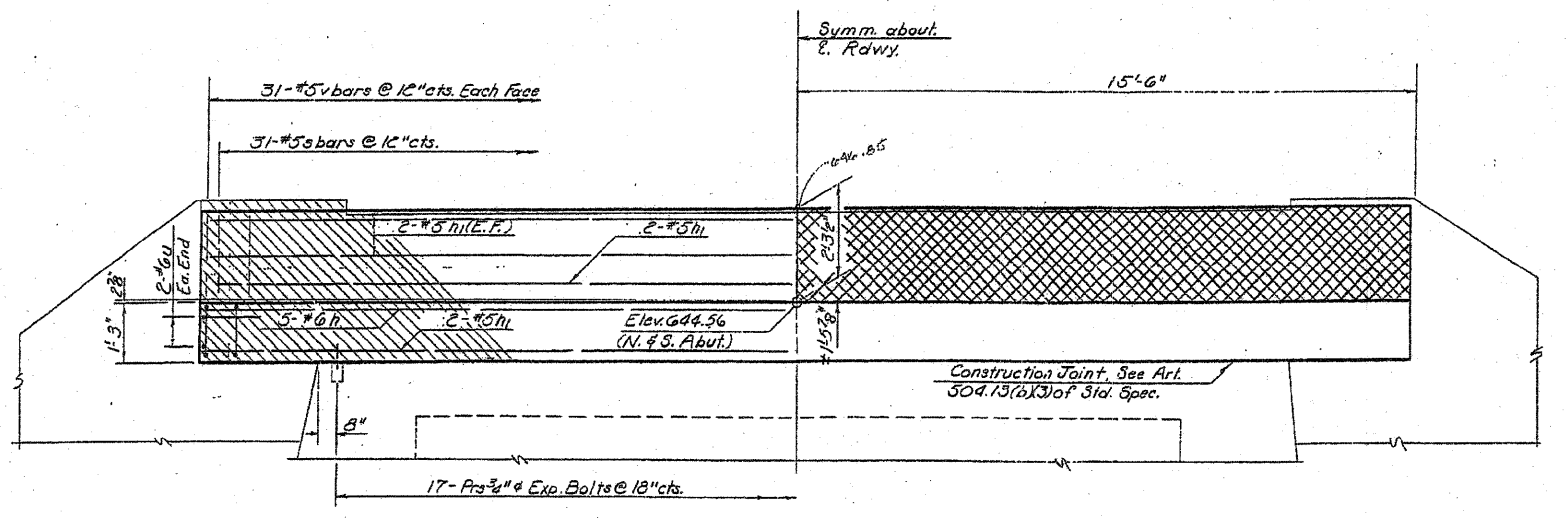


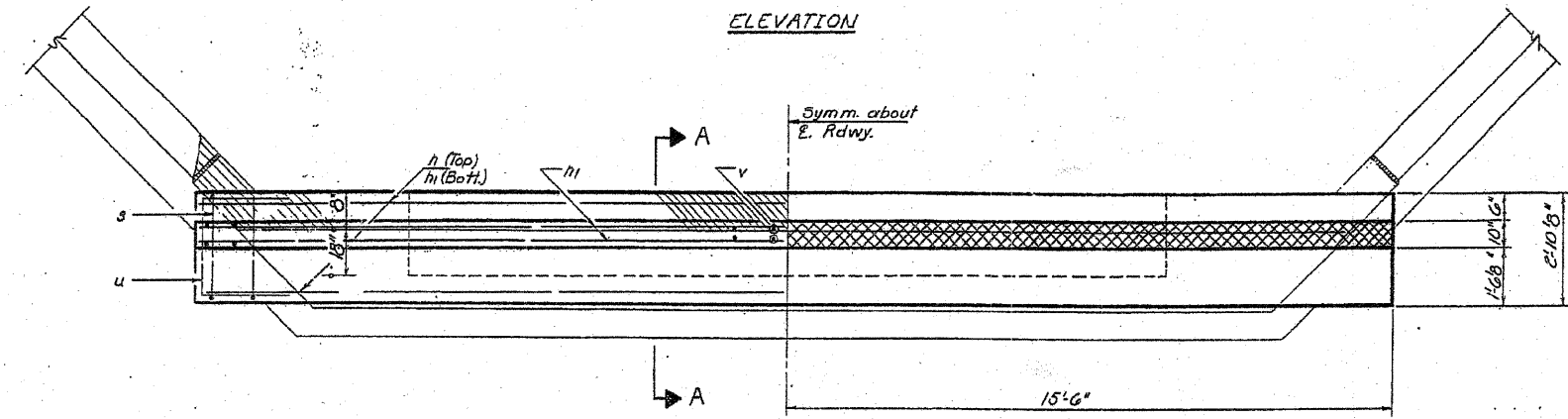
Added 2-17-10  
Contract 85506 Sheet 25

STATE OF ILLINOIS  
DEPARTMENT OF TRANSPORTATION

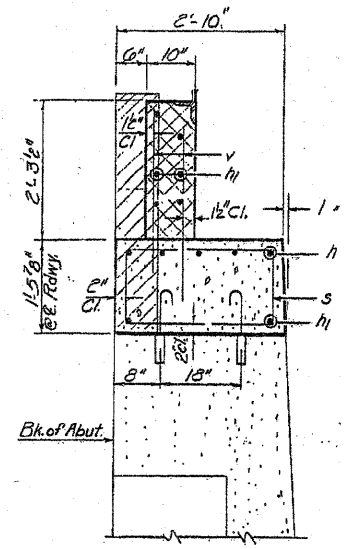
ROUTE NO.	SECTION	COUNTY	SHEET NO.	SHEET NO.
CH. 7	MFT/BR	WHITESIDE	9	6
FED. ROAD DIST. NO. 7		ILLINOIS	FED. AID PROJECT	



ELEVATION



PLAN

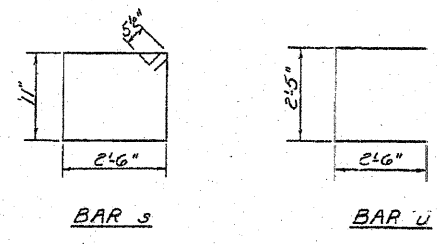


SECTION A-A

TWO ABUTS.  
BILL OF MATERIAL

Bar	No.	Size	Length	Shape
h	10	#6	30'-9"	—
h1	16	#5	30'-9"	—
s	62	#5	7'-9"	□
u	8	#5	7'-5"	□
v	124	#5	3'-6"	—
Class X Concrete		Cu. Yds.	14.1	
Rein. Bars		Cu. Yds.	2000	
Concrete Removal		Cu. Yds.	5	
Expansion Bolts (40)		Each	63	

Notes:  
Cross-hatched area to be poured after beams are in place.  
Hatched area indicates Concrete Removal. Reinforcement extending into removed area shall be cleaned and incorporated into the new construction.



DESIGNED: Sel. Patan  
CHECKED: [Signature]  
DRAWN: F. Coffin  
OCT. 25 1971  
EXAMINED: [Signature]  
PASSED: [Signature]  
APPROVED: Richard H. Holterman

ABUTMENT  
CH. RT. F. SEC. (RBMFT) BR  
WHITESIDE COUNTY  
STA. 224+00.00