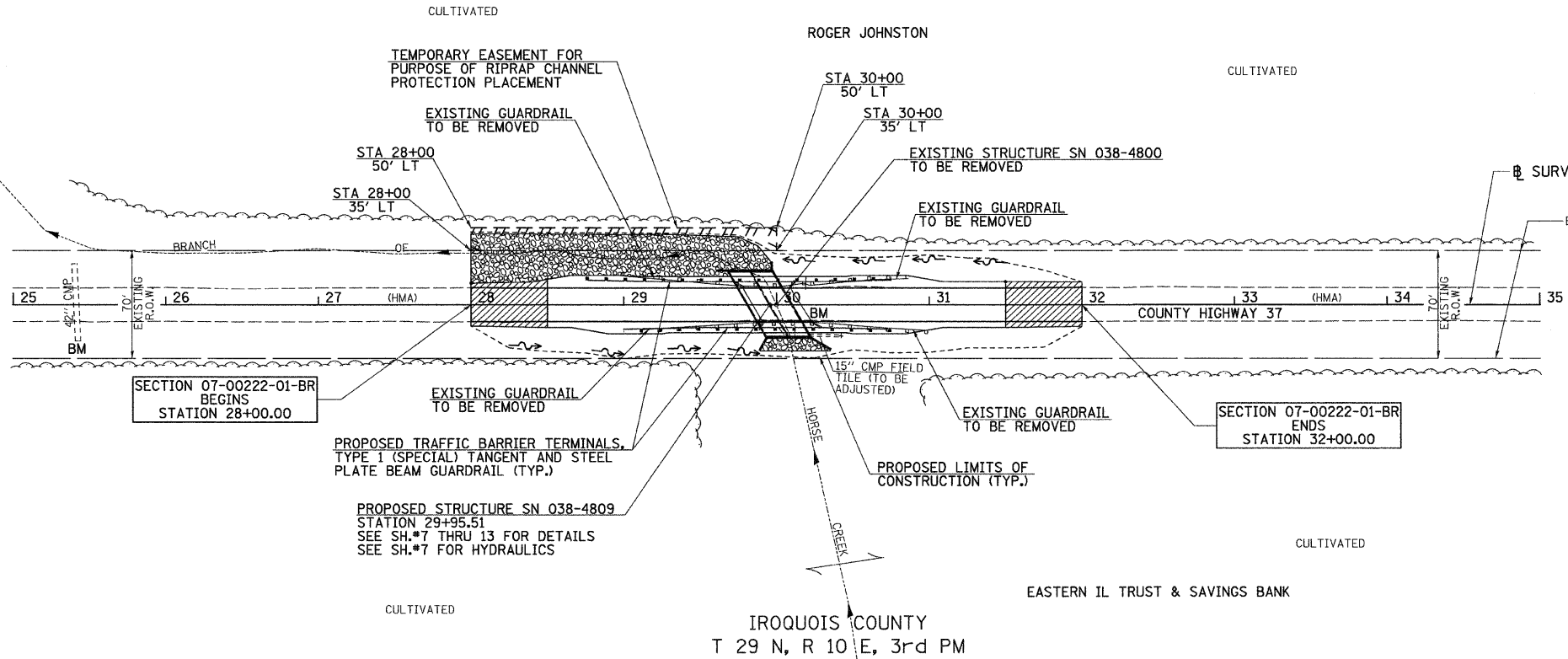
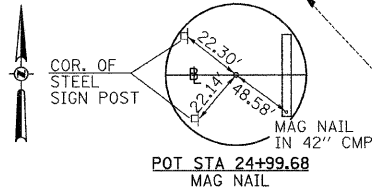
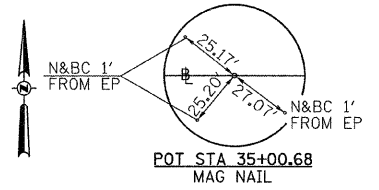


KANKAKEE COUNTY  
T 29 N, R 10 E, 3rd PM  
SECTION 7

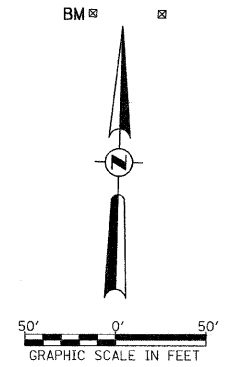


LEGEND

- TRANSITION TO OR FROM EXISTING TO PROPOSED TYPICAL PAVEMENT
- PROPOSED RIPRAP PLACEMENT
- SPECIAL DITCH WITH FLOW DIRECTION

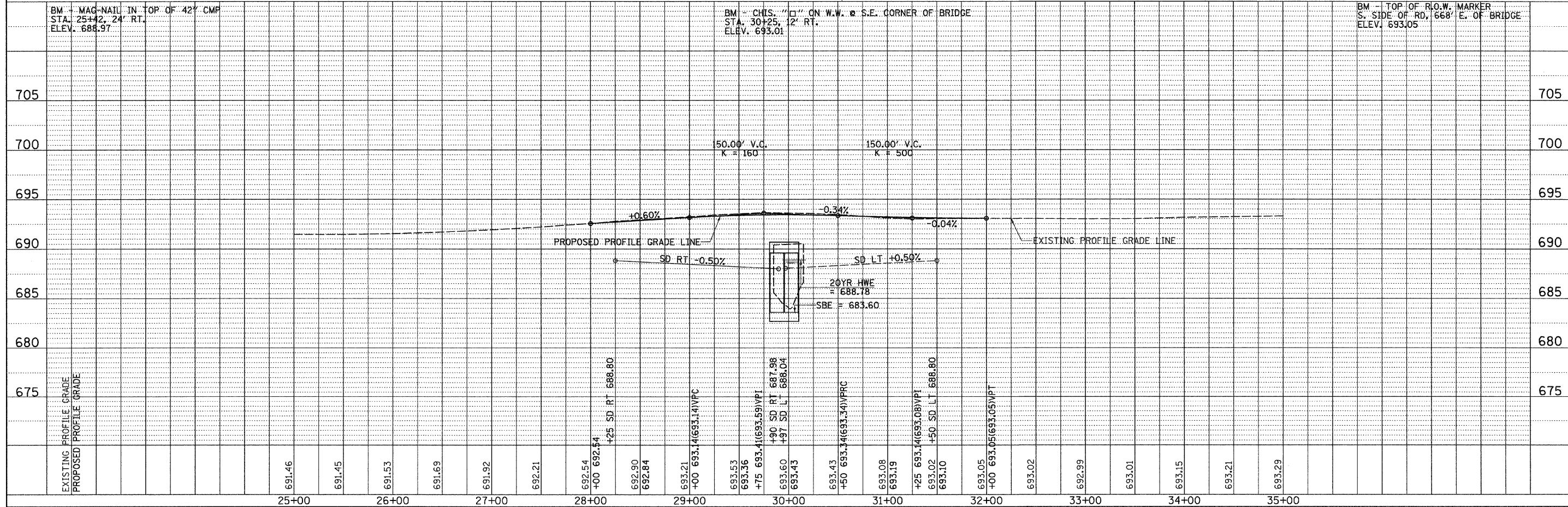
PROPOSED STRUCTURE SN 038-4809  
STATION 29+95.51  
SEE SH.#7 THRU 13 FOR DETAILS  
SEE SH.#7 FOR HYDRAULICS

IROQUOIS COUNTY  
T 29 N, R 10 E, 3rd PM  
SECTION 18



|                    |  |
|--------------------|--|
| DATE               |  |
| BY                 |  |
| SURVEYED           |  |
| ALIGNED            |  |
| CHECKED            |  |
| NO. OF WAY CHECKED |  |
| ADD FILE NAME      |  |
| PLAN               |  |
| NOTE BOOK          |  |
| NO.                |  |

|                    |  |
|--------------------|--|
| DATE               |  |
| BY                 |  |
| SURVEYED           |  |
| ALIGNED            |  |
| CHECKED            |  |
| NO. OF WAY CHECKED |  |
| ADD FILE NAME      |  |
| PROFILE            |  |
| NOTE BOOK          |  |
| NO.                |  |



|  |                             |            |           |  |   |                    |                        |                                |                 |                                |  |
|--|-----------------------------|------------|-----------|--|---|--------------------|------------------------|--------------------------------|-----------------|--------------------------------|--|
| FILE NAME = V:\bridge\2599 Iroquois\2599P001.dgn | USER NAME = othomas         | DESIGNED - | REVISED - | <b>IROQUOIS COUNTY</b><br><b>COUNTY HIGHWAY 37 OVER</b><br><b>WEST BRANCH OF HORSE CREEK</b> | <b>PLAN AND PROFILE</b><br>SCALE: 1"=50'    SHEET NO. 1 OF 1 SHEETS    STA. 28+00.00 TO STA. 32+00.00 | F.A.S. RTE. 1322   | SECTION 07-00222-01-BR | COUNTY IROQUOIS                | TOTAL SHEETS 19 | SHEET NO. 6                    |  |
|  | PLOT SCALE = 50.0000' / IN. | CHECKED -  | REVISED - |  |   | CONTRACT NO. 87431 |                        | FED. ROAD DIST. NO. 7 ILLINOIS |                 | FED. AID PROJECT BRS-1322(124) |  |
|  | PLOT DATE = 11/11/2009      | DATE -     | REVISED - |  |   |                    |                        |                                |                 |                                |  |
|  |                             |            |           |  |   |                    |                        |                                |                 |                                |  |