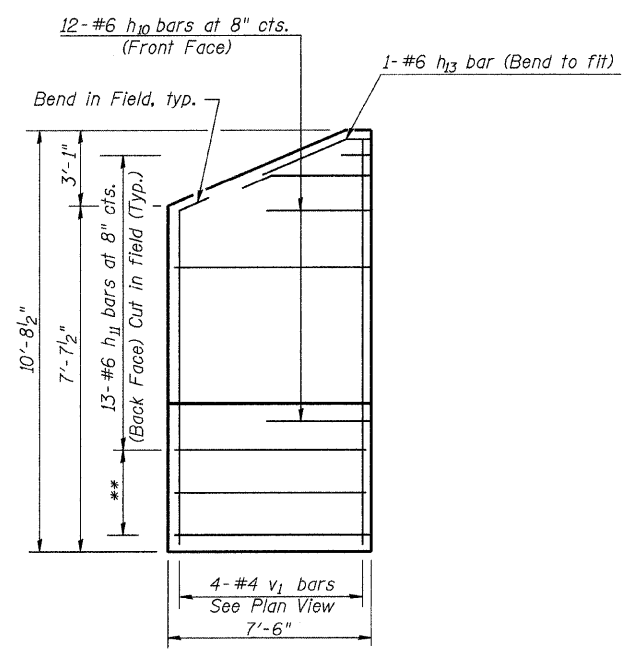


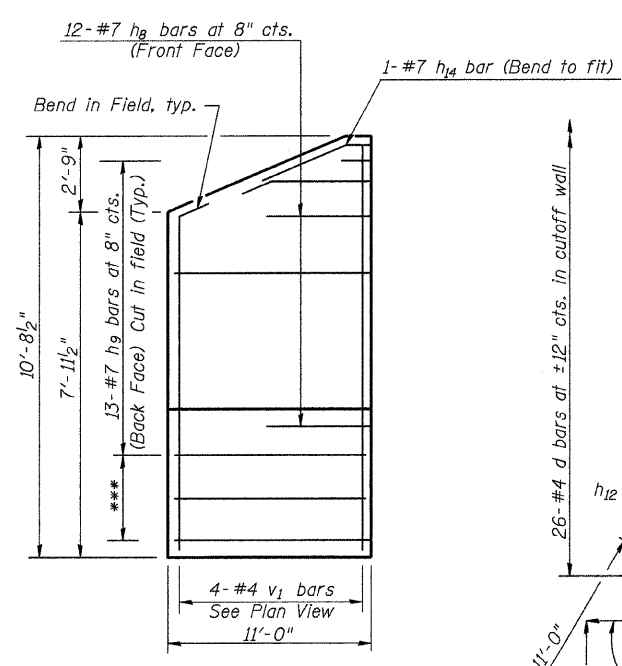
\*Dimensions are at right angles to  $\text{C} \perp$  Roadway

See Sheet 3 of 7 for Sections A-A, B-B, C-C, & D-D.  
 Bars indicated thus 25x2-#5 etc. indicates 25 lines of bars with 2 lengths per line.



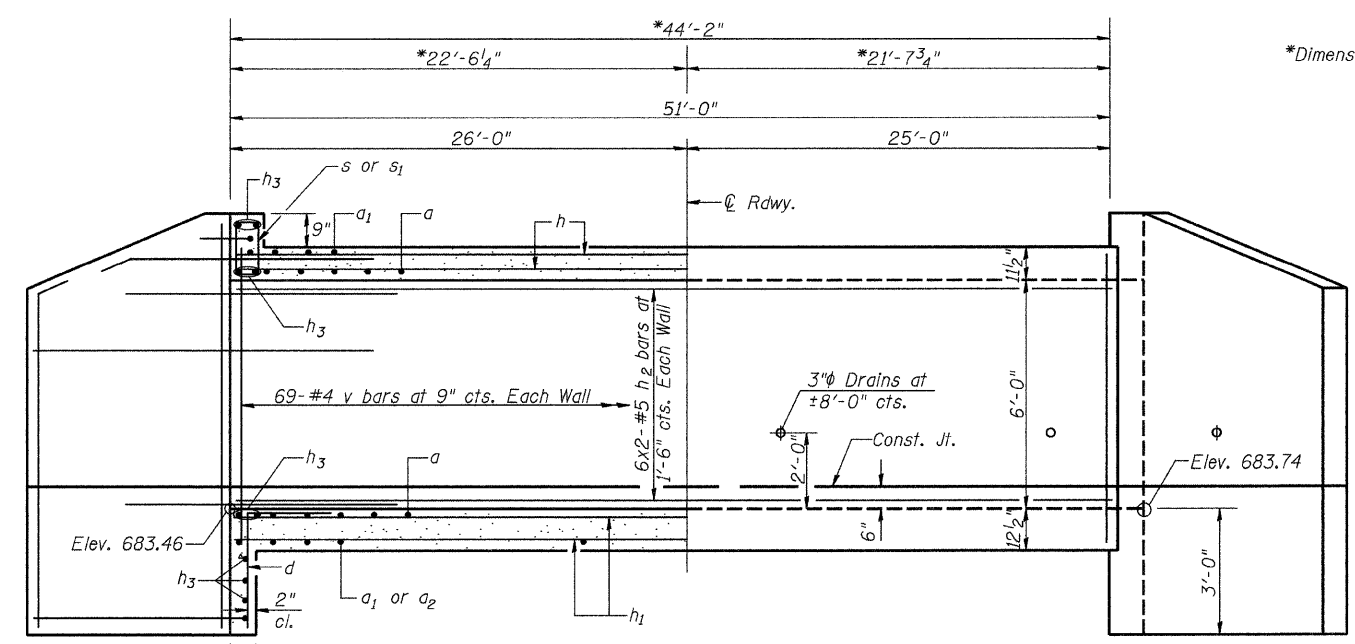
**NORTHEAST WING**

\*\* 3-#6 h13 bars at 8" cts. (Back Face)

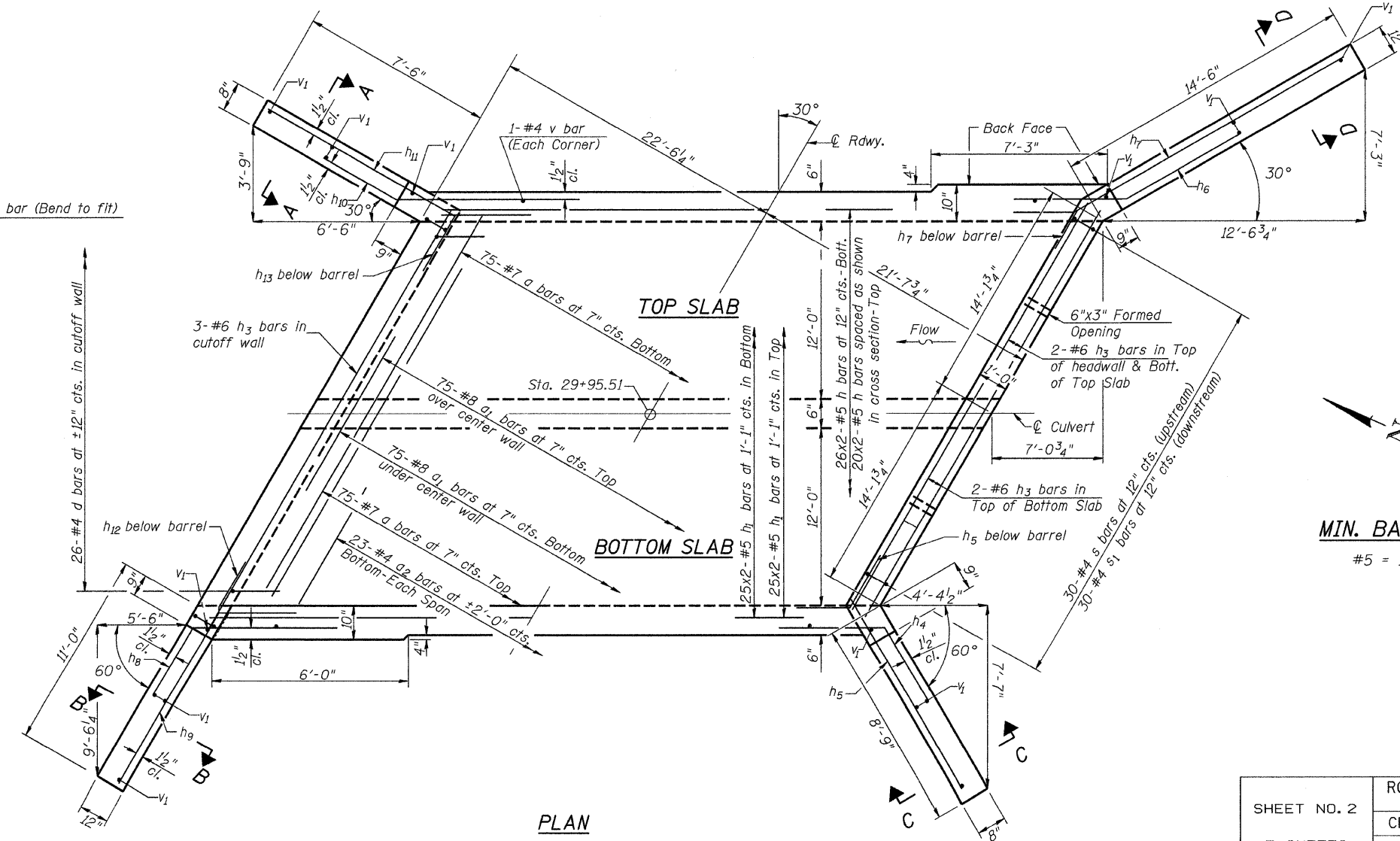


**NORTHWEST WING**

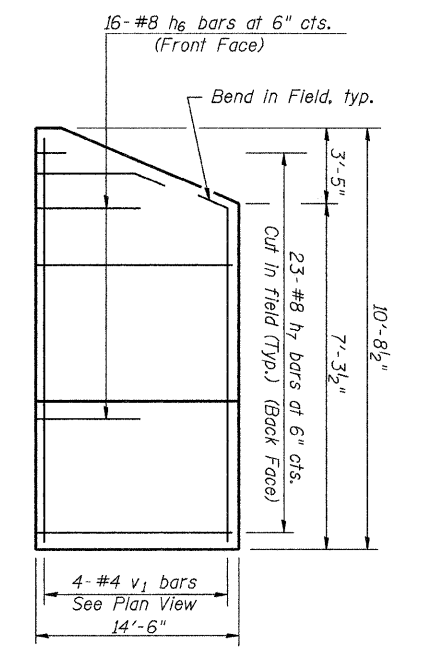
\*\*\* 3-#7 h12 bars at 8" cts. (Back Face)



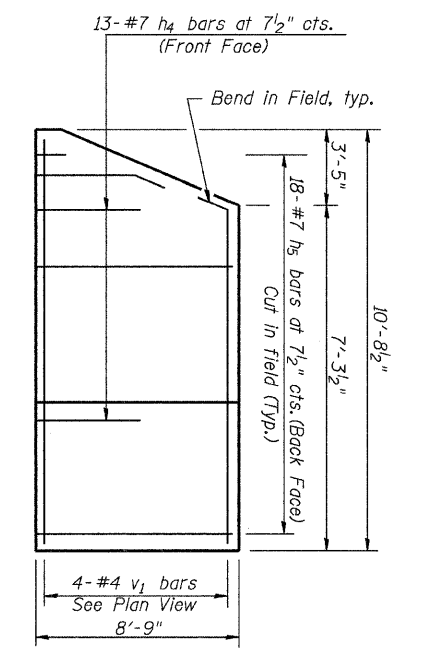
**LONGITUDINAL SECTION**



**PLAN**



**SOUTHEAST WING**



**SOUTHWEST WING**

**MIN. BAR LAP**  
 #5 = 1'-8"

**CULVERT DETAILS**  
 COUNTY HIGHWAY 37 OVER  
 WEST BRANCH OF HORSE CREEK  
 SECTION 07-00222-01-BR  
 IROQUOIS COUNTY  
 STATION 29+95.51

SHEET NO. 2  7 SHEETS	ROUTE NO.	SECTION	COUNTY	TOTAL SHEETS	SHEET NO.
	CH 37	07-00222-01-BR	IROQUOIS	19	8
	S.N. 038-4809		CONTRACT NO. 87431		
	FED. ROAD DIST. NO. 7 ILLINOIS		FED. AID PROJECT BRS-1322(124)		