

INDEX OF SHEETS

- 1 COVER SHEET
- 2 GENERAL NOTES, BENCHMARKS, LEGEND
- 3 SUMMARY OF QUANTITIES
- 4 TYPICAL SECTION & DRIVEWAY DETAILS
- 5-14 SCHEDULE OF QUANTITIES
- 15 HORIZONTAL CONTROL
- 16-26 COUNTY HIGHWAY #1 - PLAN & PROFILES
- 27 TR 1500N- INTERSECTION DETAIL
- 28 TR 1600N- INTERSECTION DETAIL
- 29-31 DETAILS
- 32-60 COUNTY HIGHWAY #1 - CROSS SECTIONS
- 61-63 TR 1500N - CROSS SECTIONS
- 64-66 TR 1600N - CROSS SECTIONS

**STATE OF ILLINOIS
DEPARTMENT OF TRANSPORTATION
DIVISION OF HIGHWAYS**

**PLANS FOR PROPOSED
LOCAL AGENCY IMPROVEMENT
FEDERAL-AID SECONDARY PROJECT**

**COUNTY HIGHWAY #1, F.A.S. ROUTE #358
SECTION: 86-00075-01-AS
PROJECT: RS-0358 (104)
WOODFORD COUNTY
C-94-078-07**

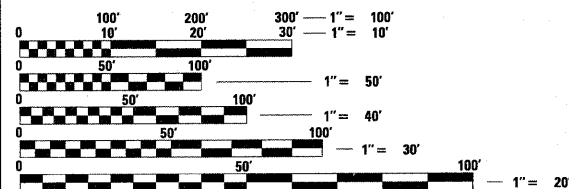
HIGHWAY STANDARDS

- 280001-04 TEMPORARY EROSION CONTROL SYSTEMS
- 542401-01 METAL END SECTION FOR PIPE CULVERTS
- 602401-02 MANHOLE, TYPE A
- 701901-01 TRAFFIC CONTROL DEVICES
- B.L.R. 21-8 TYP. APP. CONST. ON RURAL LOCAL HIGHWAYS
- B.L.R. 22-6 TYP. APP. CONST. ON RURAL LOCAL HIGHWAYS
(TWO LANE, TWO WAY) (ROAD CLOSED TO THRU TRAFFIC)
- B.L.R. 24-2 MAILBOX TURNOUT, LOCAL SYSTEM
- 540401-D4 PRECAST CONC. BOX CULVERTS, END SECTION, & DROP BOX END SECTION
- 604301-D4 TYPE 37 GRATE

UTILITIES

AMEREN CILCO (GAS & ELECTRIC)
110 W. MONARCH ST.
PEORIA, IL 61602
KENT KOWALSKIE 309-264-5575 (GAS)
TOM KOEPEL 309-693-4702 (ELECTRIC)

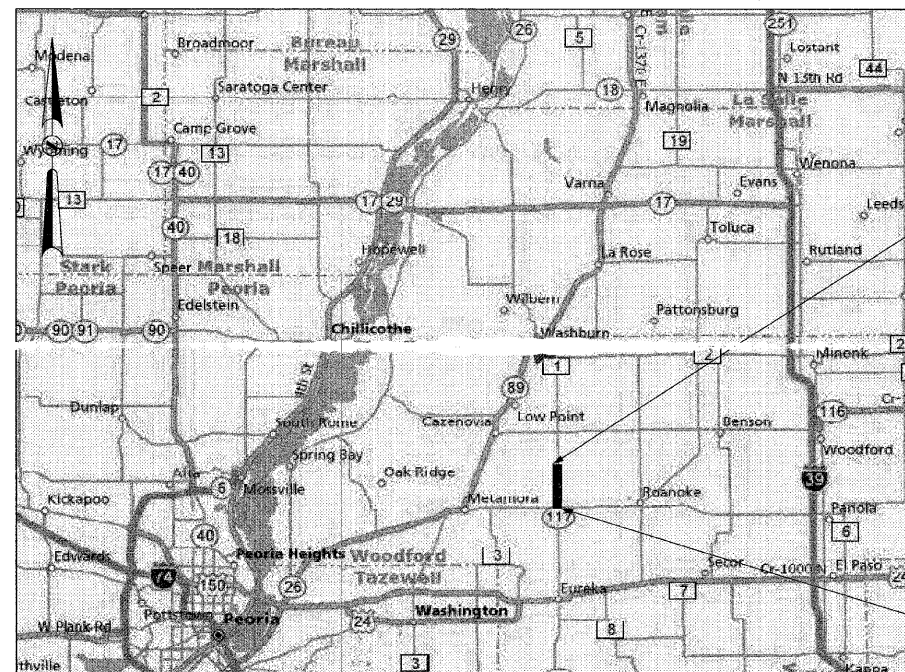
VERIZON WIRELESS (FIBER OPTIC)



FULL SIZE PLANS HAVE BEEN PREPARED USING STANDARD ENGINEERING SCALES. REDUCED SIZED PLANS WILL NOT CONFORM TO STANDARD SCALES. IN MAKING MEASUREMENTS ON REDUCED PLANS, THE ABOVE SCALES MAY BE USED.

J.U.L.I.E.
JOINT UTILITY LOCATION INFORMATION FOR EXCAVATION
1-800-892-0123

CONTRACT NO. 89476



LOCATION MAP

(NOT TO SCALE)

LENGTH OF IMPROVEMENT = 15,600 FEET = 2.95 MILE
FUNCTIONAL CLASSIFICATION: RURAL MAJOR COLLECTOR
DESIGN SPEED: 50 MPH, POSTED SPEED: 55 MPH
CURRENT ADT: 850, SU: 7%, MU: 5%
DESIGN YEAR: 2023, ADT: 1350, DHV: 169, %TRUCKS: 12%

PROJECT LOCATION

WEST 1/2 SECTION 6, TOWNSHIP 27 NORTH, RANGE 1 WEST
EAST 1/2 SECTION 1, TOWNSHIP 27 NORTH, RANGE 2 WEST
WEST 1/2 SECTIONS 19, 30, 31, TOWNSHIP 28 NORTH, RANGE 1 WEST
EAST 1/2 SECTIONS 24, 25, 36, TOWNSHIP 28 NORTH, RANGE 2 WEST

END IMPROVEMENT
STA. 167 + 00.00

BEGIN IMPROVEMENT
STA. 11 + 00.00

APPROVED	12/21	20 09
	<i>Dominic Raskman</i>	
	LOCAL AGENCY OFFICIAL	
PASSED	12-23	20 09
	<i>J.C. Carr</i>	
	DISTRICT FOUR ENGINEER OF LOCAL ROADS & STREETS	
Releasing For Bid Based on Limited Review	12-23	20 09
	<i>Joseph E. Brown</i>	
	DEPUTY DIRECTOR OF HIGHWAYS, REGION THREE ENGINEER	
	STATE OF ILLINOIS DEPARTMENT OF TRANSPORTATION	
	<i>Alicia M. Hermann</i>	
	ALICIA M. HERMANN LICENSED PROFESSIONAL ENGINEER OF ILLINOIS	
	12/21/2009	11/30/2011
	DATE	EXPIRES

**HERMANN & ASSOCIATES, LLC
CONSULTING ENGINEERS**

5835 NORTH GALENA ROAD
PEORIA, ILLINOIS 61614
PHONE: (309) 687-5566
FAX: (309) 687-0571
ILLINOIS PROFESSIONAL DESIGN FIRM NO. 184.004714

PRINTED BY THE AUTHORITY
OF THE STATE OF ILLINOIS

TRANSPORTATION • MUNICIPAL ENGINEERING • LAND DEVELOPMENT
ASBESTOS INSPECTION • CONSTRUCTION OBSERVATION