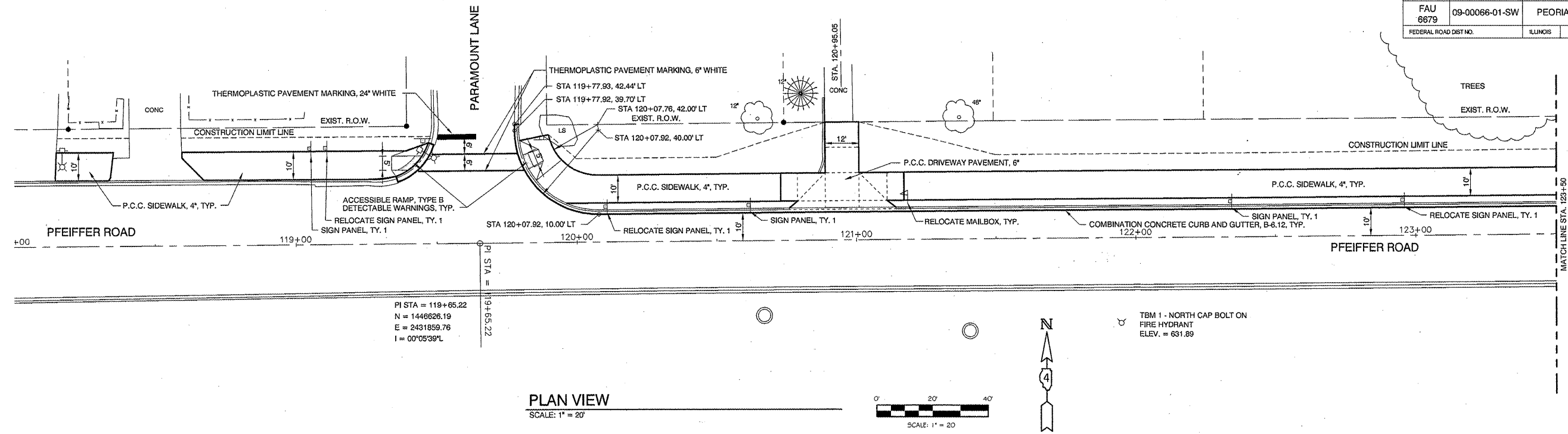
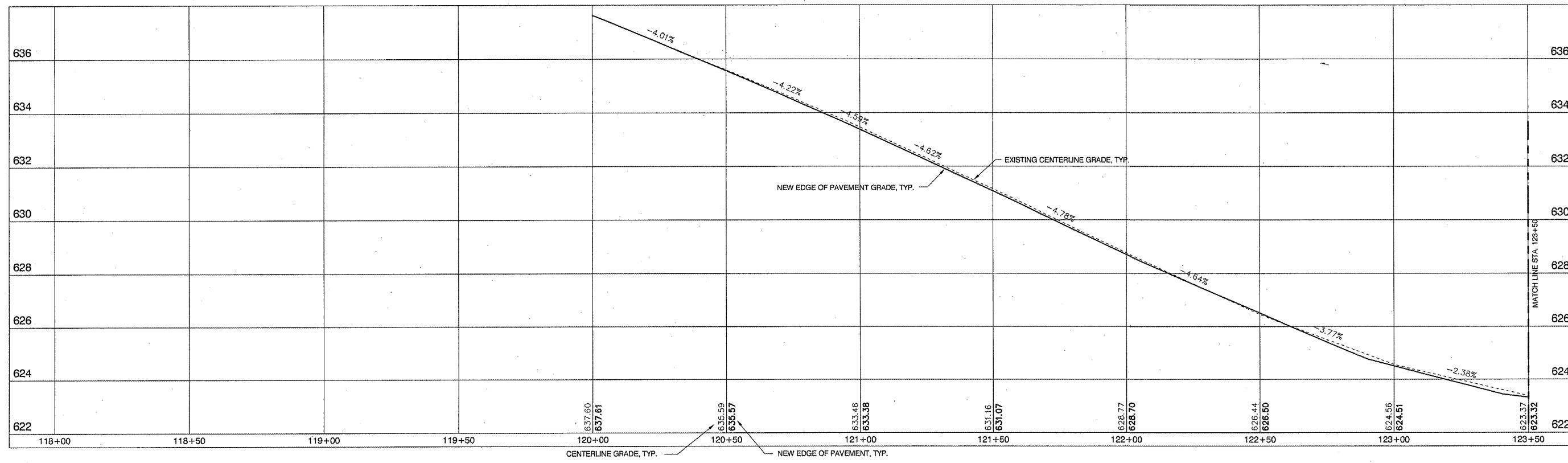


ROUTE NO. FAU 6679	SECTION 09-00066-01-SW	COUNTY PEORIA	TOTAL SHEETS 24	SHEET NO. 9
FEDERAL ROAD DIST. NO.		ILLINOIS	CONTRACT NO. 69693	



PLAN VIEW
SCALE: 1" = 20'



PROFILE VIEW
SCALE: HORIZ. 1" = 20' VERT. 1" = 2'

REV.	DATE	NATURE OF REVISION	CHECKED

SURVEYED	MDP	CLIENT:
DRAWN	DEH	VILLAGE OF BARTONVILLE
CHECKED	SDK	PEORIA COUNTY, ILLINOIS
SCALE	1" = 20'	
DATE	12-02-09	