

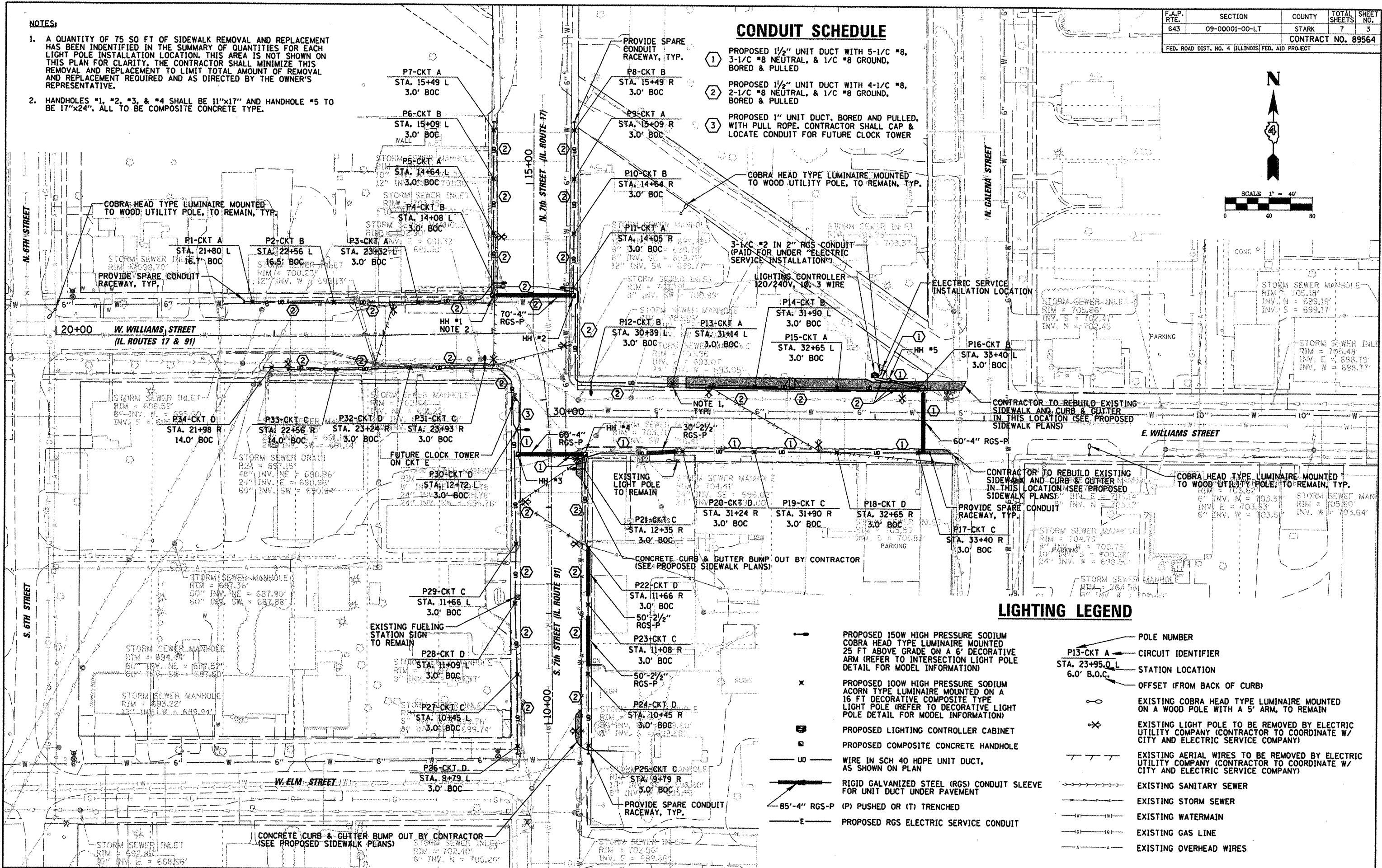
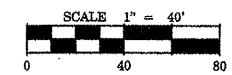
**NOTES:**

1. A QUANTITY OF 75 SQ FT OF SIDEWALK REMOVAL AND REPLACEMENT HAS BEEN IDENTIFIED IN THE SUMMARY OF QUANTITIES FOR EACH LIGHT POLE INSTALLATION LOCATION. THIS AREA IS NOT SHOWN ON THIS PLAN FOR CLARITY. THE CONTRACTOR SHALL MINIMIZE THIS REMOVAL AND REPLACEMENT TO LIMIT TOTAL AMOUNT OF REMOVAL AND REPLACEMENT REQUIRED AND AS DIRECTED BY THE OWNER'S REPRESENTATIVE.
2. HANDHOLES #1, #2, #3, & #4 SHALL BE 11"x17" AND HANDHOLE #5 TO BE 17"x24", ALL TO BE COMPOSITE CONCRETE TYPE.

**CONDUIT SCHEDULE**

1. PROPOSED 1/2" UNIT DUCT WITH 5-1/2" #8, 3-1/2" #8 NEUTRAL, & 1/2" #8 GROUND, BORED & PULLED
2. PROPOSED 1/2" UNIT DUCT WITH 4-1/2" #8, 2-1/2" #8 NEUTRAL, & 1/2" #8 GROUND, BORED & PULLED
3. PROPOSED 1" UNIT DUCT, BORED AND PULLED, WITH PULL ROPE. CONTRACTOR SHALL CAP & LOCATE CONDUIT FOR FUTURE CLOCK TOWER

F.A.P. RTE. 643	SECTION 09-0001-00-LT	COUNTY STARK	TOTAL SHEETS 7	SHEET NO. 3
FED. ROAD DIST. NO. 4 ILLINOIS FED. AID PROJECT				
CONTRACT NO. 89564				



**LIGHTING LEGEND**

- ➔ PROPOSED 150W HIGH PRESSURE SODIUM COBRA HEAD TYPE LUMINAIRE MOUNTED 25 FT ABOVE GRADE ON A 6' DECORATIVE ARM (REFER TO INTERSECTION LIGHT POLE DETAIL FOR MODEL INFORMATION)
- ✕ PROPOSED 100W HIGH PRESSURE SODIUM ACORN TYPE LUMINAIRE MOUNTED ON A 16 FT DECORATIVE COMPOSITE TYPE LIGHT POLE (REFER TO DECORATIVE LIGHT POLE DETAIL FOR MODEL INFORMATION)
- ☒ PROPOSED LIGHTING CONTROLLER CABINET
- ☐ PROPOSED COMPOSITE CONCRETE HANDHOLE
- UD — WIRE IN SCH 40 HDPE UNIT DUCT, AS SHOWN ON PLAN
- RGS-P — RIGID GALVANIZED STEEL (RGS) CONDUIT SLEEVE FOR UNIT DUCT UNDER PAVEMENT
- E — PROPOSED RGS ELECTRIC SERVICE CONDUIT
- ➔ POLE NUMBER
- ➔ P13-CKT A — CIRCUIT IDENTIFIER
- ➔ STA. 23+95.0 L — STATION LOCATION
- ➔ 6.0' B.O.C. — OFFSET (FROM BACK OF CURB)
- EXISTING COBRA HEAD TYPE LUMINAIRE MOUNTED ON A WOOD POLE WITH A 5' ARM, TO REMAIN
- ✕ EXISTING LIGHT POLE TO BE REMOVED BY ELECTRIC UTILITY COMPANY (CONTRACTOR TO COORDINATE W/ CITY AND ELECTRIC SERVICE COMPANY)
- — — EXISTING AERIAL WIRES TO BE REMOVED BY ELECTRIC UTILITY COMPANY (CONTRACTOR TO COORDINATE W/ CITY AND ELECTRIC SERVICE COMPANY)
- — — EXISTING SANITARY SEWER
- — — EXISTING STORM SEWER
- — — EXISTING WATERMAIN
- — — EXISTING GAS LINE
- — — EXISTING OVERHEAD WIRES

FILE NAME =	USER NAME = #USER#	DESIGNED GAH	REVISED -
#FILE#		DRAWN KB	REVISED -
PLOT SCALE = #PrintDialogScale#		CHECKED AJD	REVISED -
PLOT DATE = 12/30/2009		DATE 11-06-2009	REVISED -

**STATE OF ILLINOIS  
DEPARTMENT OF TRANSPORTATION**

**DOWNTOWN LIGHTING PROJECT  
PRELIMINARY LIGHT POLE LAYOUT**

SCALE: IntDialogScale SHEET NO. 3 OF 7 SHEETS STA. TO STA.

**CHRISTOPHER B. BURKE ENGINEERING, LTD.**  
202 NE Madison, Suite 301  
Peoria, Illinois 61602  
(309) 678-9000