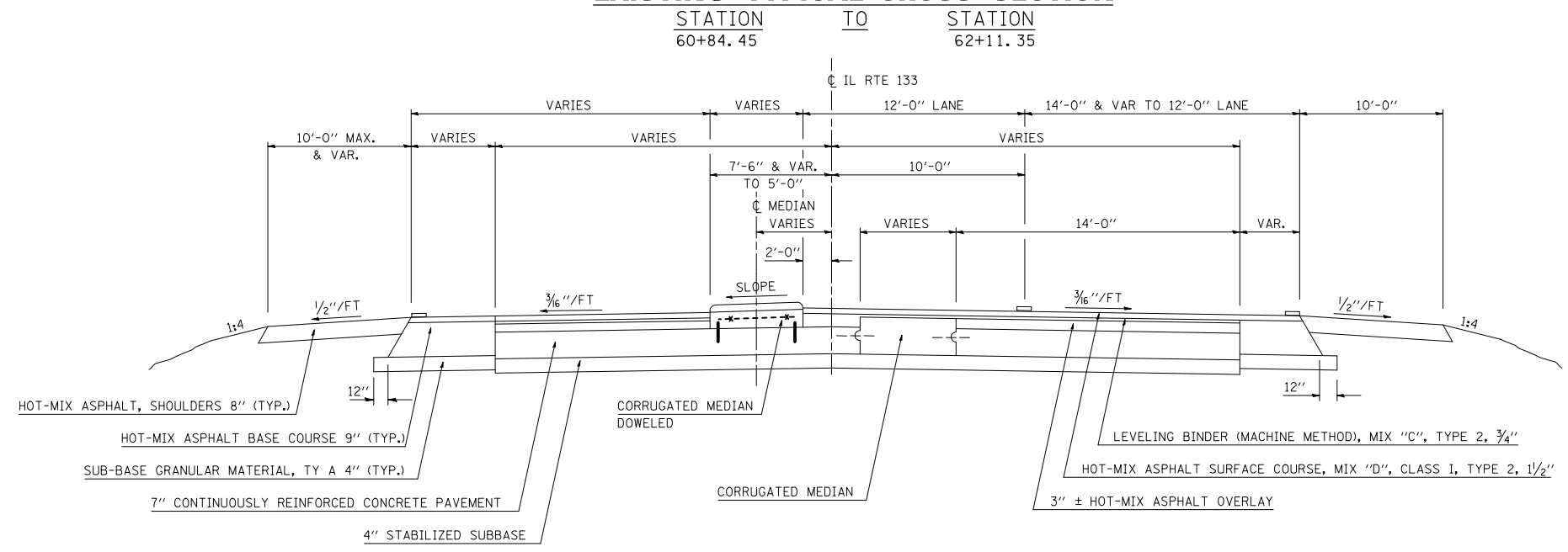


F.A.I. RTE.	SECTION	COUNTY	TOTAL SHEETS	SHEET NO.
57	15,21-25HB-2)BR	DOUGLAS	65	8

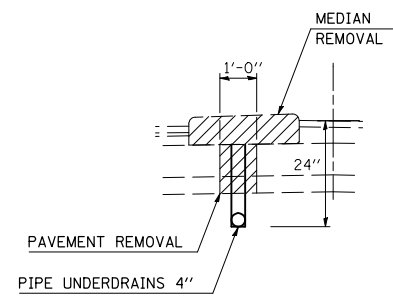
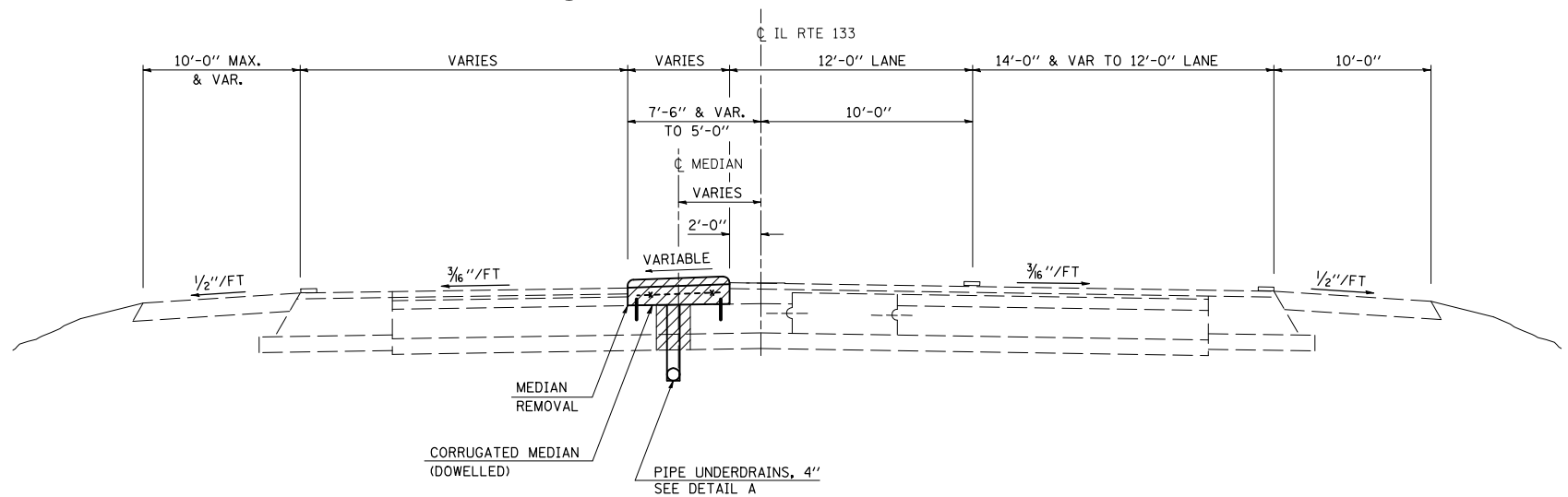
CONTRACT NO. 90952

EXISTING TYPICAL CROSS SECTION



4 PROPOSED TYPICAL CROSS SECTION

STATION 60+84.45 TO STATION 62+20.00



DETAIL "A"

TYPICAL CROSS SECTIONS
 FAI ROUTE 57
 SECTION (15, 21-25HB-2)BR
 DOUGLAS COUNTY

CUMMINS ENGINEERING CORPORATION

JOB #: 2114.1
 FILE: 2114TYP
 DATE: 2/27/07