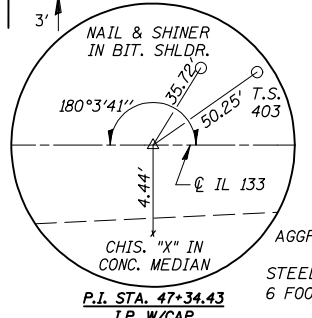
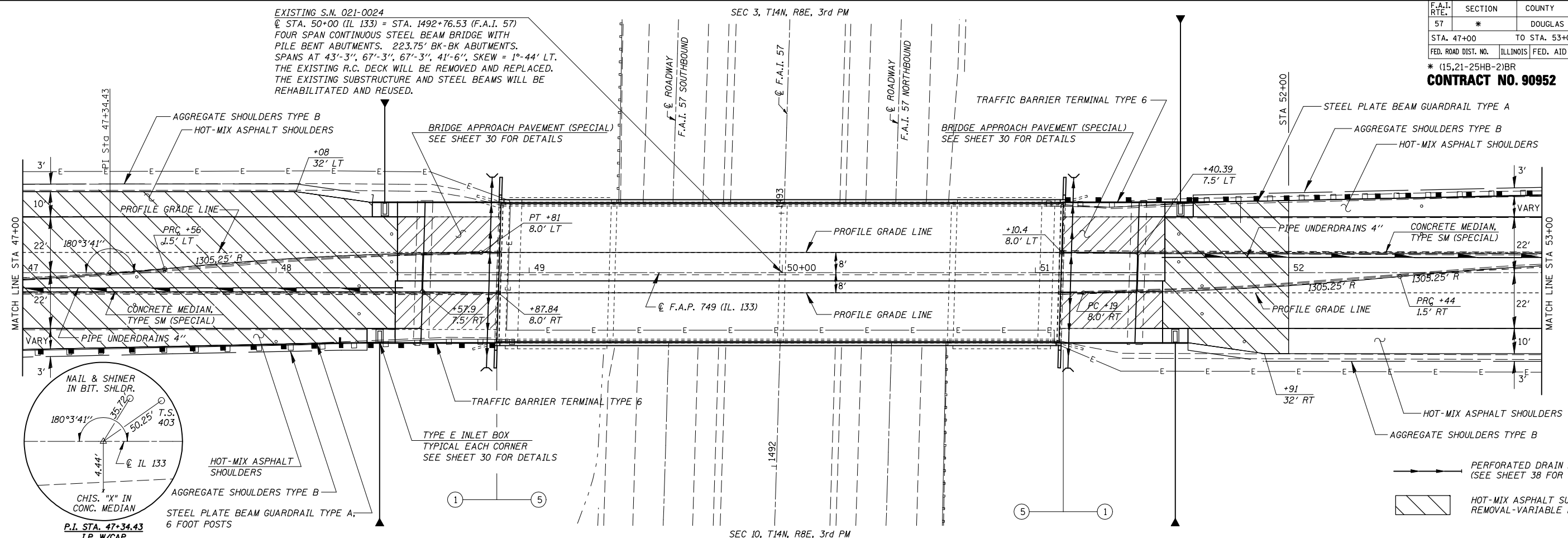


F.A.I. RTE.	SECTION	COUNTY	TOTAL SHEETS	SHEET NO.
57	*	DOUGLAS	65	27
STA. 47+00		TO STA. 53+00		
FED. ROAD DIST. NO.	ILLINOIS	FED. AID PROJECT		

CONTRACT NO. 90952

EXISTING S.N. 021-0024
 @ STA. 50+00 (IL 133) = STA. 1492+76.53 (F.A.I. 57)
 FOUR SPAN CONTINUOUS STEEL BEAM BRIDGE WITH
 PILE BENT ABUTMENTS. 223.75' BK-BK ABUTMENTS.
 SPANS AT 43'-3", 67'-3", 67'-3", 41'-6", SKEW = 1°-44' LT.
 THE EXISTING R.C. DECK WILL BE REMOVED AND REPLACED.
 THE EXISTING SUBSTRUCTURE AND STEEL BEAMS WILL BE
 REHABILITATED AND REUSED.



PLAN	DATE
SURVEYED	
PLOTTED	
CHECKED	
BY	
NO.	

PROFILE	DATE
SURVEYED	
PLOTTED	
CHECKED	
BY	
NO.	

