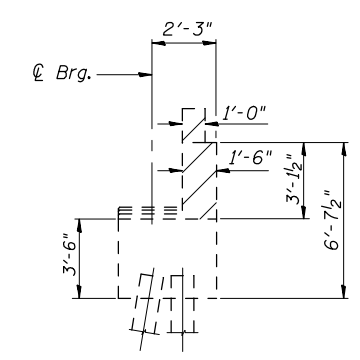
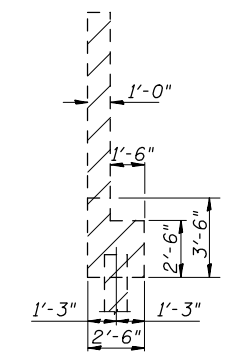


PLAN

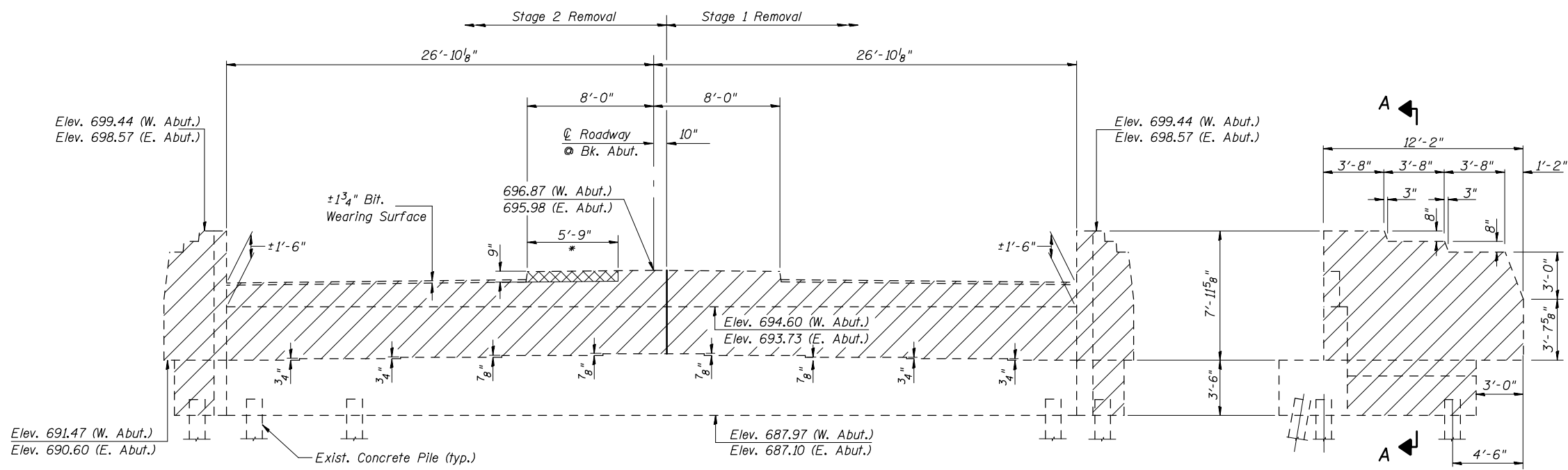
(Stage Removal Shown @ E. Abut.)
(Similar @ W. Abut. but Opposite Hand)



SEC. THRU ABUT.

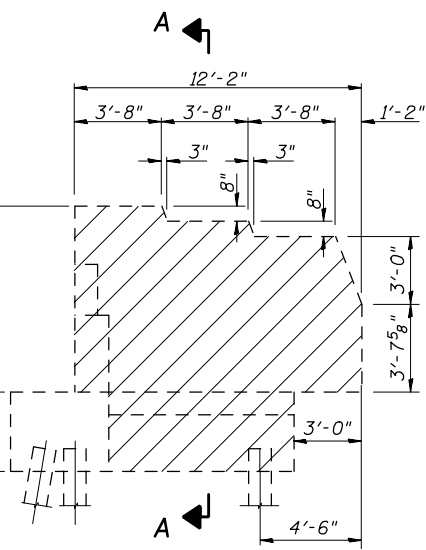


SEC. A-A



ELEVATION

(Looking East @ E. Abut.)
(W. Abut. Similar except Stage Removal Line is Opposite Hand)



WINGWALL ELEVATION

**TWO ABUTMENTS
BILL OF MATERIAL**

Item	Unit	Total
Concrete Removal	Cu. Yd.	46.9

Note: Hatched area indicates Concrete Removal.
Existing electrical conduit at abutments shall be removed prior to concrete removal. See Roadway Plans.

ABUTMENT CONCRETE REMOVAL DETAILS

IL ROUTE 133 OVER I-57
F.A.I. ROUTE 57 SECTION (15,21-25HB-2)BR
DOUGLAS COUNTY
STA. 1492+76.53
S.N. 021-0024

DESIGNED	Ruben V. Boehler
CHECKED	Tim S. Howard
DRAWN	Nicole L. Darling
CHECKED	Michael D. Cummins

* Concrete Median Removal at abutments prior to Stage 1 Removal shall not be paid for separately but shall be included in the cost of Concrete Removal.

NOTE

Plan elevations relative to the existing structure have been taken from existing plans and reduced by 0.47 feet to match benchmark datum.