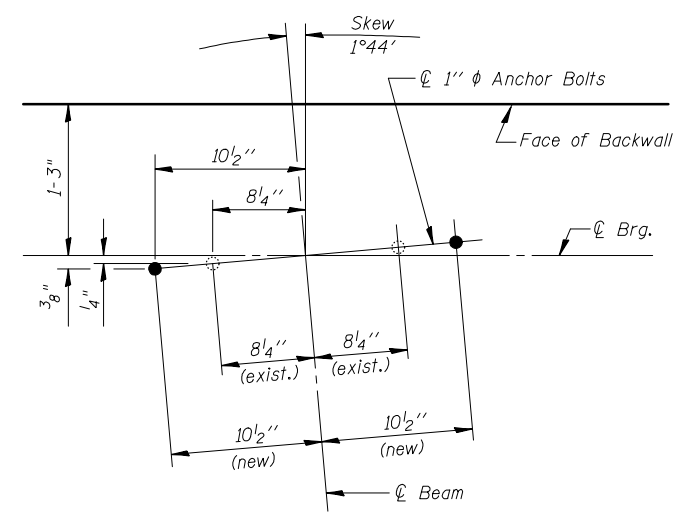
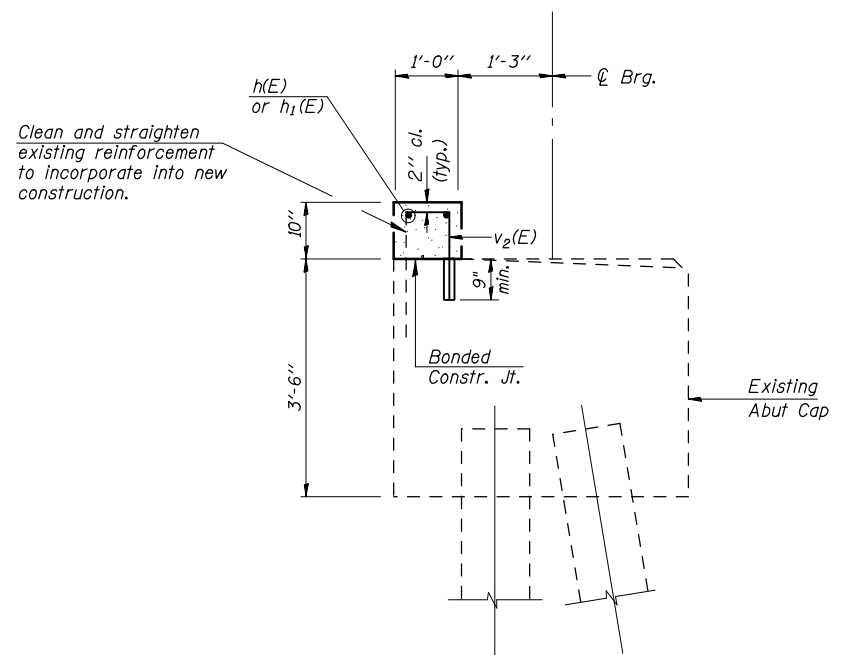


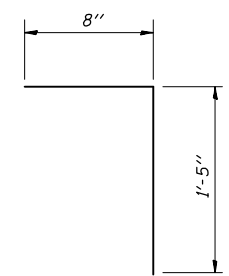
**FIELD CUTTING DIAGRAM - V<sub>1</sub> BARS**  
 Order v<sub>1</sub>(E) bars full length. Cut as shown and use remainder of bars in opposite face.



**ANCHOR BOLT LAYOUT AT ABUTMENTS**



**SEC. THRU ABUT.**  
 (Dim. at Rt. L's unless noted)



**BAR v<sub>2</sub>(E)**

**TWO ABUTMENTS  
 BILL OF MATERIAL**

Bar	No.	Size	Length	Shape
h(E)	4	#5	33'-2"	—
h <sub>1</sub> (E)	4	#5	39'-9"	—
h <sub>2</sub> (E)	64	#5	7'-8"	—
h <sub>3</sub> (E)	32	#5	4'-0"	—
v <sub>1</sub> (E)	32	#5	12'-2"	—
v <sub>2</sub> (E)	114	#5	2'-1"	⌒
Structure Excavation		Cu. Yd.		311
Concrete Structures		Cu. Yd.		11.8
Reinforcement Bars, Epoxy Coated		Pound		1,610
Bar Splicers		Each		4

DESIGNED Ruben V. Boehler  
 CHECKED Tim S. Howard  
 DRAWN Nicole L. Darling  
 CHECKED Michael D. Cummins

Work this sheet with sheets 17 and 18 of 22.

**ABUTMENT DETAILS**

IL ROUTE 133 OVER I-57  
 F.A.I. ROUTE 57 SECTION (15,21-25HB-2)BR  
 DOUGLAS COUNTY  
 STA. 1492+76.53  
 S.N. 021-0024

CUMMINS ENGINEERING CORPORATION

JOB #: 2114  
 FILE: 2114ABUTS  
 DATE: 10/24/06