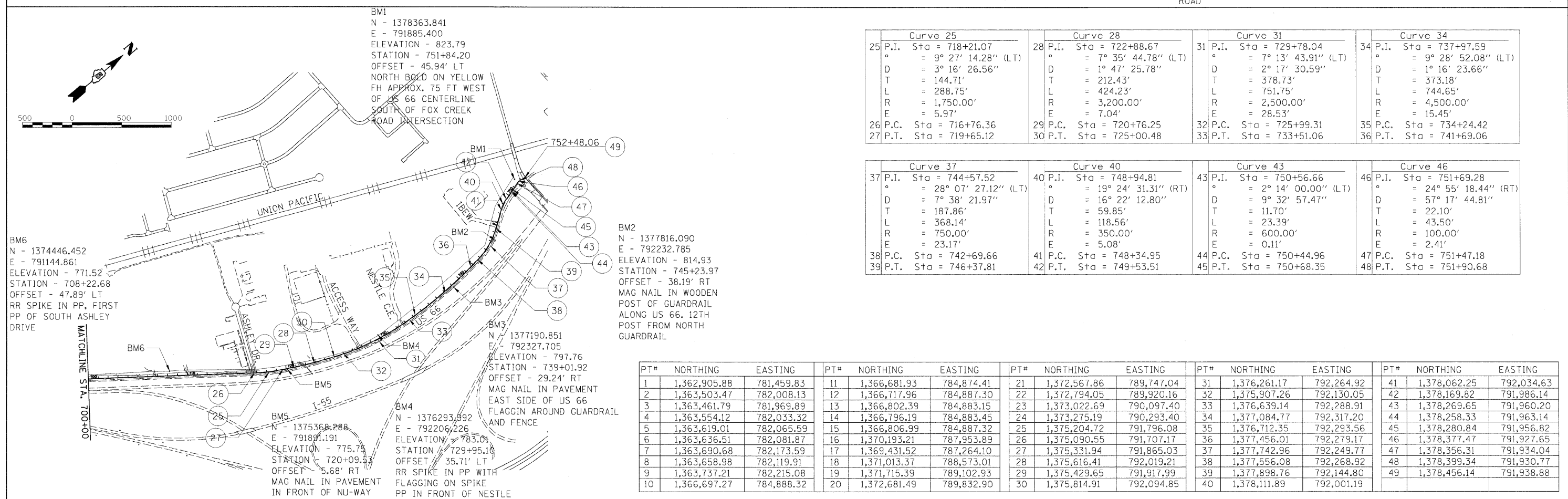
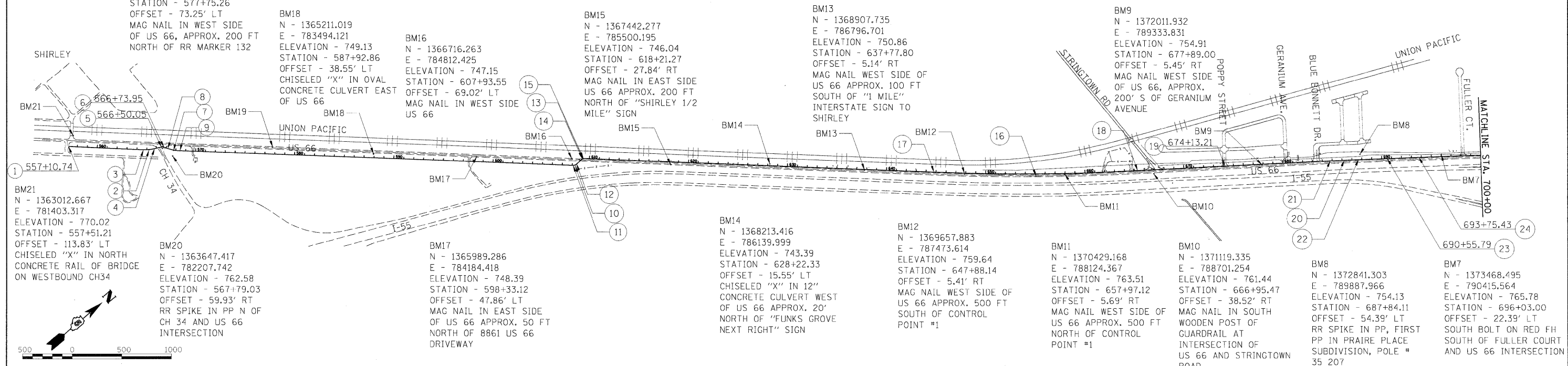


Curve 2		Curve 7		Curve 10		Curve 13		Curve 16		Curve 20	
2 P.I. Sta = 565+21.75	7 P.I. Sta = 567+80.47	10 P.I. Sta = 608+30.33	13 P.I. Sta = 609+33.42	16 P.I. Sta = 655+07.39	20 P.I. Sta = 686+24.08						
° = 16° 05' 59.25" (LT)	° = 17° 43' 01.03" (LT)	° = 45° 00' 00" (LT)	° = 44° 58' 54.87" (RT)	° = 5° 06' 58.98" (LT)	° = 0° 42' 34.40" (RT)						
D = 14° 19' 26.20"	D = 14° 19' 26.20"	D = 114° 35' 29.61"	D = 381° 58' 18.71"	D = 0° 14' 56.80"	D = 0° 14' 56.80"						
T = 56.57'	T = 62.34'	T = 20.71'	T = 6.21'	T = 1,027.61'	T = 142.42'						
L = 112.40'	L = 123.69'	L = 39.27'	L = 11.78'	L = 2,053.85'	L = 284.83'						
R = 400.00'	R = 400.00'	R = 50.00'	R = 15.00'	R = 23,000.00'	R = 23,000.00'						
E = 3.98'	E = 4.83'	E = 4.12'	E = 1.23'	E = 22.94'	E = 0.44'						
3 P.C. Sta = 564+65.18	8 P.C. Sta = 567+18.13	11 P.C. Sta = 608+09.62	14 P.C. Sta = 609+27.21	17 P.C. Sta = 644+79.79	21 P.C. Sta = 684+81.66						
4 P.T. Sta = 565+77.58	9 P.T. Sta = 568+41.82	12 P.T. Sta = 608+48.89	15 P.T. Sta = 609+38.99	18 P.T. Sta = 665+33.63	22 P.T. Sta = 687+66.49						



Curve 25		Curve 28		Curve 31		Curve 34	
25 P.I. Sta = 718+21.07	28 P.I. Sta = 722+88.67	31 P.I. Sta = 729+78.04	34 P.I. Sta = 737+97.59				
° = 9° 27' 14.28" (LT)	° = 7° 35' 44.78" (LT)	° = 7° 13' 43.91" (LT)	° = 9° 28' 52.08" (LT)				
D = 3° 16' 26.56"	D = 1° 47' 25.78"	D = 2° 17' 30.59"	D = 1° 16' 23.66"				
T = 144.71'	T = 212.43'	T = 378.73'	T = 373.18'				
L = 288.75'	L = 424.23'	L = 751.75'	L = 744.65'				
R = 1,750.00'	R = 3,200.00'	R = 2,500.00'	R = 4,500.00'				
E = 5.97'	E = 7.04'	E = 28.53'	E = 15.45'				
26 P.C. Sta = 716+76.36	29 P.C. Sta = 720+76.25	32 P.C. Sta = 725+99.31	35 P.C. Sta = 734+24.42				
27 P.T. Sta = 719+65.12	30 P.T. Sta = 725+00.48	33 P.T. Sta = 733+51.06	36 P.T. Sta = 741+69.06				

Curve 37		Curve 40		Curve 43		Curve 46	
37 P.I. Sta = 744+57.52	40 P.I. Sta = 748+94.81	43 P.I. Sta = 750+56.66	46 P.I. Sta = 751+69.28				
° = 28° 07' 27.12" (LT)	° = 19° 24' 31.31" (RT)	° = 2° 14' 00.00" (LT)	° = 24° 55' 18.44" (RT)				
D = 7° 38' 21.97"	D = 16° 22' 12.80"	D = 9° 32' 57.47"	D = 57° 17' 44.81"				
T = 187.86'	T = 59.85'	T = 11.70'	T = 22.10'				
L = 368.14'	L = 118.56'	L = 23.39'	L = 43.50'				
R = 750.00'	R = 350.00'	R = 600.00'	R = 100.00'				
E = 23.17'	E = 5.08'	E = 0.11'	E = 2.41'				
38 P.C. Sta = 742+69.66	41 P.C. Sta = 748+34.95	44 P.C. Sta = 750+44.96	47 P.C. Sta = 751+47.18				
39 P.T. Sta = 746+37.81	42 P.T. Sta = 749+53.51	45 P.T. Sta = 750+68.35	48 P.T. Sta = 751+90.68				

PT#	NORTHING	EASTING	PT#	NORTHING	EASTING	PT#	NORTHING	EASTING	PT#	NORTHING	EASTING	PT#	NORTHING	EASTING
1	1,362,905.88	781,459.83	11	1,366,681.93	784,874.41	21	1,372,567.86	789,747.04	31	1,376,261.17	792,264.92	41	1,378,062.25	792,034.63
2	1,363,503.47	782,008.13	12	1,366,717.96	784,887.30	22	1,372,794.05	789,920.16	32	1,375,907.26	792,130.05	42	1,378,169.82	791,986.14
3	1,363,461.79	781,969.89	13	1,366,802.39	784,883.15	23	1,373,022.69	790,097.40	33	1,376,639.14	792,288.91	43	1,378,269.65	791,960.20
4	1,363,554.12	782,033.32	14	1,366,796.19	784,883.45	24	1,373,275.19	790,293.40	34	1,377,084.77	792,317.20	44	1,378,258.33	791,963.14
5	1,363,619.01	782,065.59	15	1,366,806.99	784,887.32	25	1,375,204.72	791,796.08	35	1,376,712.35	792,293.56	45	1,378,280.84	791,956.82
6	1,363,636.51	782,081.87	16	1,370,193.21	787,953.89	26	1,375,090.55	791,707.17	36	1,377,456.01	792,279.17	46	1,378,377.47	791,927.65
7	1,363,690.68	782,173.59	17	1,369,431.52	787,264.10	27	1,375,331.94	791,865.03	37	1,377,742.96	792,249.77	47	1,378,356.31	791,934.04
8	1,363,658.98	782,119.91	18	1,371,013.37	788,573.01	28	1,375,616.41	792,019.21	38	1,377,556.08	792,268.92	48	1,378,399.34	791,930.77
9	1,363,737.21	782,215.08	19	1,371,715.39	789,102.93	29	1,375,429.65	791,917.99	39	1,377,898.76	792,144.80	49	1,378,456.14	791,938.88
10	1,366,697.27	784,888.32	20	1,372,681.49	789,832.90	30	1,375,814.91	792,094.85	40	1,378,111.89	792,001.19			

FILE NAME = I:\01\jobs\01S2024A\CADD\Road\Sheet\VC-512.Geor.dgn	USER NAME = Toot0272	DESIGNED -	REVISED -
PLOT SCALE = 500.0000' / in.	DATE = 11/03/2009	DRAWN -	REVISED -
		CHECKED -	REVISED -

**STATE OF ILLINOIS  
DEPARTMENT OF TRANSPORTATION**

**GEOMETRIC CONTROL**

SCALE: 1"=500'	SHEET NO. 1 OF 1 SHEETS	STA. TO STA.	F.A. RTE.	SECTION	COUNTY	TOTAL SHEETS	SHEET NO.
				01-00001-01-BT	MCLEAN	50	12
				C-95-301-10			
				CONTRACT NO. 91429			
				[ILLINOIS] FED. AID PROJECT			