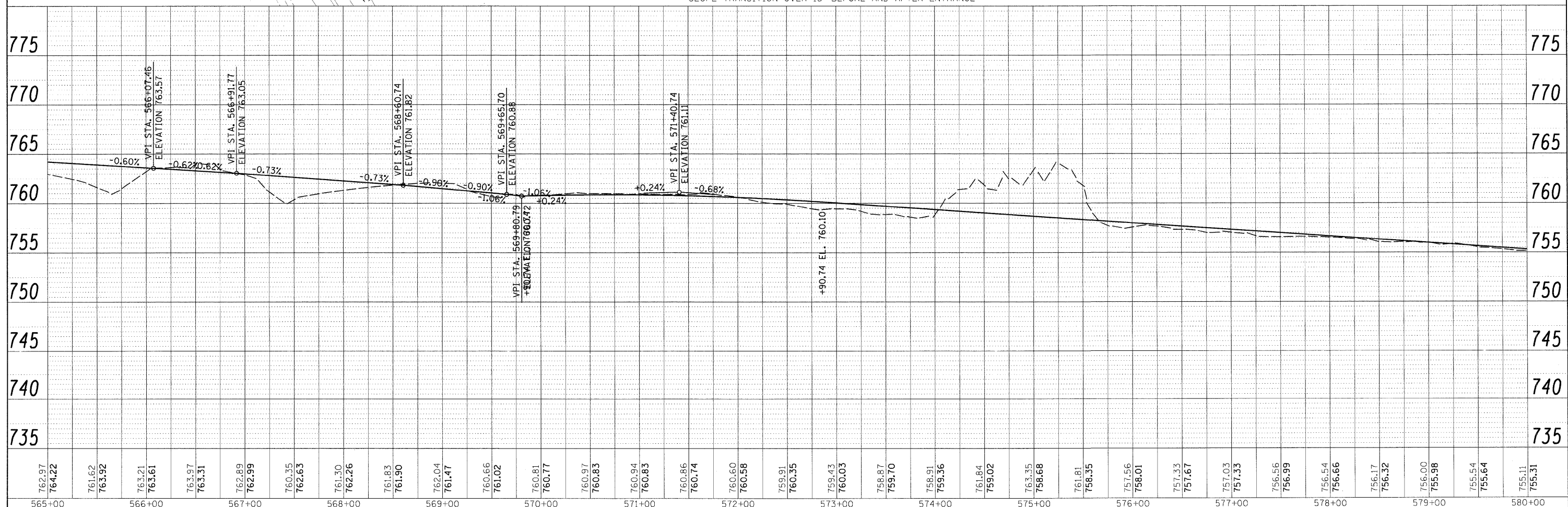
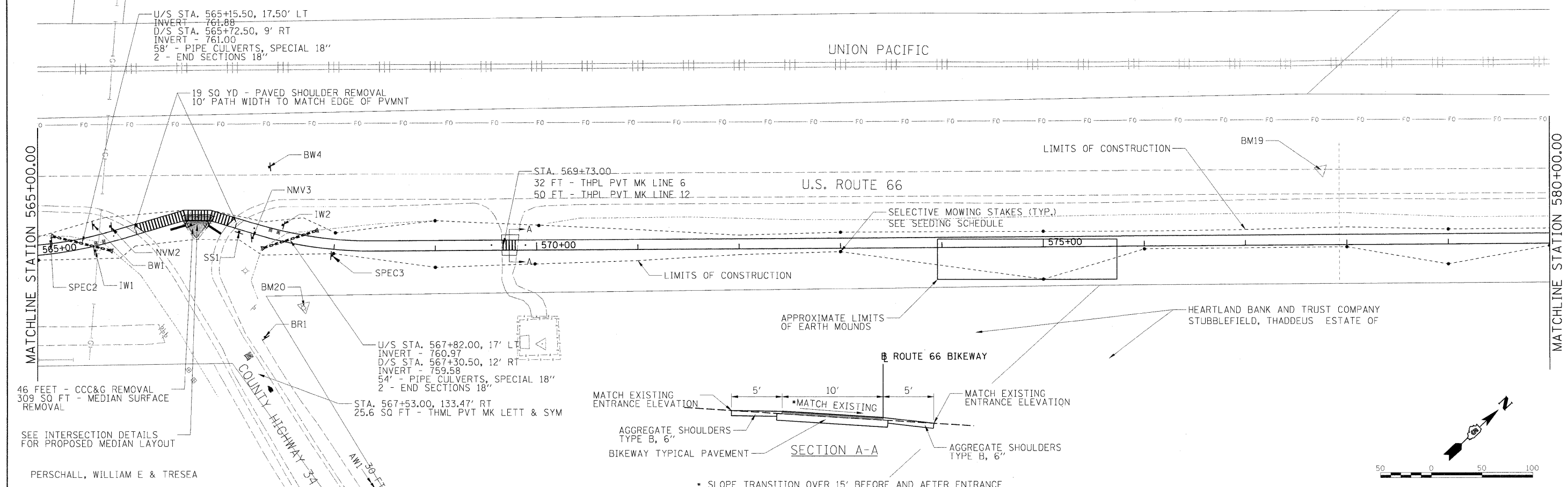


PLAN	SURVEYED	DATE
	PLOTTED	
	NOTED	
	BY	
	NO.	

PROFILE	SURVEYED	DATE
	PLOTTED	
	NOTED	
	BY	
	NO.	



762.97	764.22	761.62	763.92	763.21	763.61	763.97	763.31	762.89	762.99	760.35	762.63	761.30	762.26	761.83	761.90	762.04	761.47	760.66	761.02	760.81	760.77	760.97	760.83	760.94	760.83	760.86	760.74	760.60	760.58	759.91	760.35	759.43	760.03	758.87	759.70	758.91	759.36	761.84	759.02	763.35	758.68	761.81	758.35	757.56	758.01	757.33	757.67	757.03	757.33	756.56	756.99	756.54	756.66	756.17	756.32	756.00	755.98	755.54	755.64	755.11	755.31
565+00	566+00	567+00	568+00	569+00	570+00	571+00	572+00	573+00	574+00	575+00	576+00	577+00	578+00	579+00	580+00																																														

STATE OF ILLINOIS
DEPARTMENT OF TRANSPORTATION

PLAN AND PROFILE SHEETS

SCALE: 1"=50' SHEET NO. 2 OF 14 SHEETS STA. 565+00.00 TO STA. 580+00.00

F.A. RTE.	SECTION	COUNTY	TOTAL SHEETS	SHEET NO.
	01-00001-01-BT	MCLEAN	50	14
C-95-301-10		CONTRACT NO. 91429		
ILLINOIS FED. AID PROJECT				

FILE NAME = I:\01\jobs\0152024A\CADD\Road\Sheet\C-702.dgn
USER NAME = Pop00275
DESIGNED - heyen
DRAWN - pop00276
CHECKED - heyen
DATE - 11/03/2009

REVISIONS:
REVISED -
REVISED -
REVISED -
REVISED -