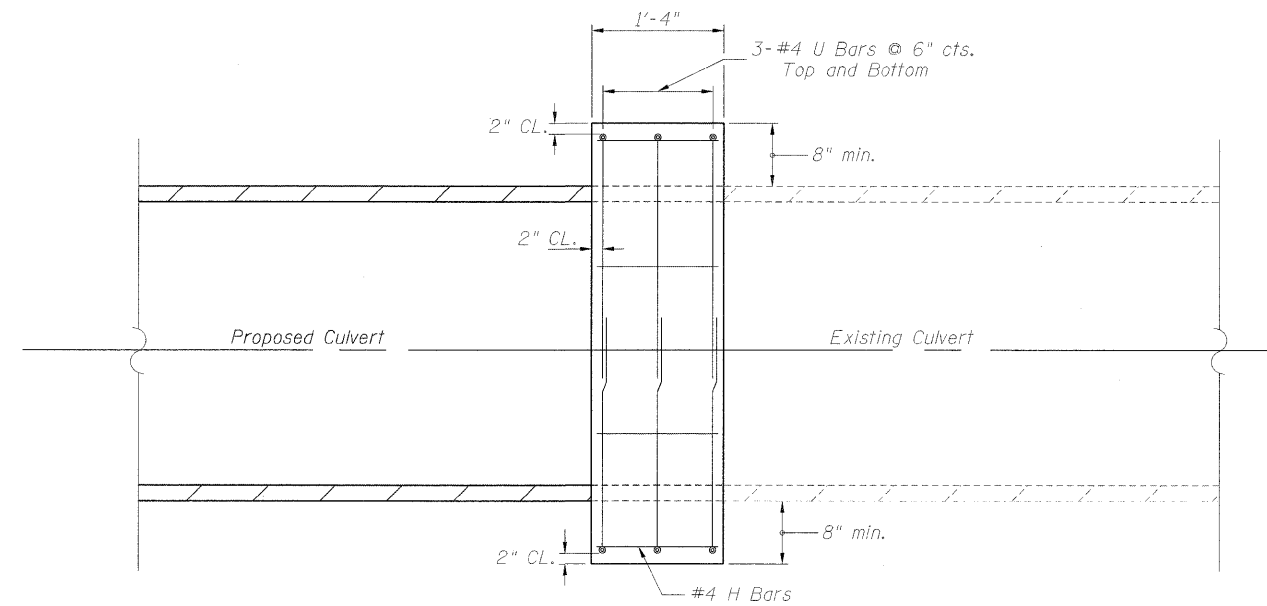
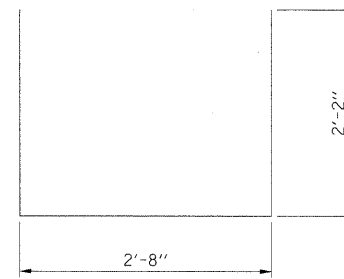


**SECTION VIEW**



**ELEVATION VIEW**



**U BAR**

**CONCRETE COLLAR FOR CULVERT CONNECTION**

**BILL OF MATERIAL  
ONE CONCRETE COLLAR**

Bar	No.	Size	Length	Shape
H	12	#4	1'-0"	—
U	6	#4	7'-0"	U
Concrete Collar			Cu Yd	0.3
Reinforcement Bars			Pound	40

Note: Cost For Structure Excavation Will Not Be Paid For Separately But Shall Be Included In The Unit Bid Price For Concrete Collar.

FILE NAME = I:\01\jobs\01S2024A\CADD\Road\Sheet\VC-509\Box_Culvert_Collar.dgn	USER NAME = Heyen00751	DESIGNED - heyen	REVISIONS -	<b>STATE OF ILLINOIS DEPARTMENT OF TRANSPORTATION</b>	<b>CONCRETE CULVERT COLLAR DETAIL</b>	F.A. RTE.	SECTION	COUNTY	TOTAL SHEETS	SHEET NO.
PLOT SCALE = 1:8000 1/4" = 1'	CHECKED - heyen	DATE - 11/03/2009	REVISIONS -			01-00001-01-BT	MCLEAN	50	40	
PLOT DATE = 11/19/2009						C-95-301-10			CONTRACT NO. 91429	
						ILLINOIS FED. AID PROJECT				
SCALE:		SHEET NO. OF SHEETS STA. TO STA.								