

EXXONMOBIL COAL USA, INC.
SE 1/4 SEC 7, T9N, R6W, 3rd P.M.

EXXONMOBIL COAL USA, INC.
SW 1/4 SEC 8, T9N, R6W, 3rd P.M.

ROUTE NO.	SECTION	COUNTY	TOTAL SHEETS	SHEET NO.
C.H. 3	06-00086-00-PV	MACOUPIN	43	7
FED. ROAD DIST. NO. 7		ILLINOIS	FED. AID PROJECT-	

A.R. STA. 58+32
PIPE CULVERTS, CLASS A, TYPE 2
24" (R.C.C.P.) - 98' LONG
W/ STD. 542301 CONC. END
SECTIONS = 2 EACH
54' LT, U.S.F.L. 639.10
56' RT, D.S.F.L. 638.50

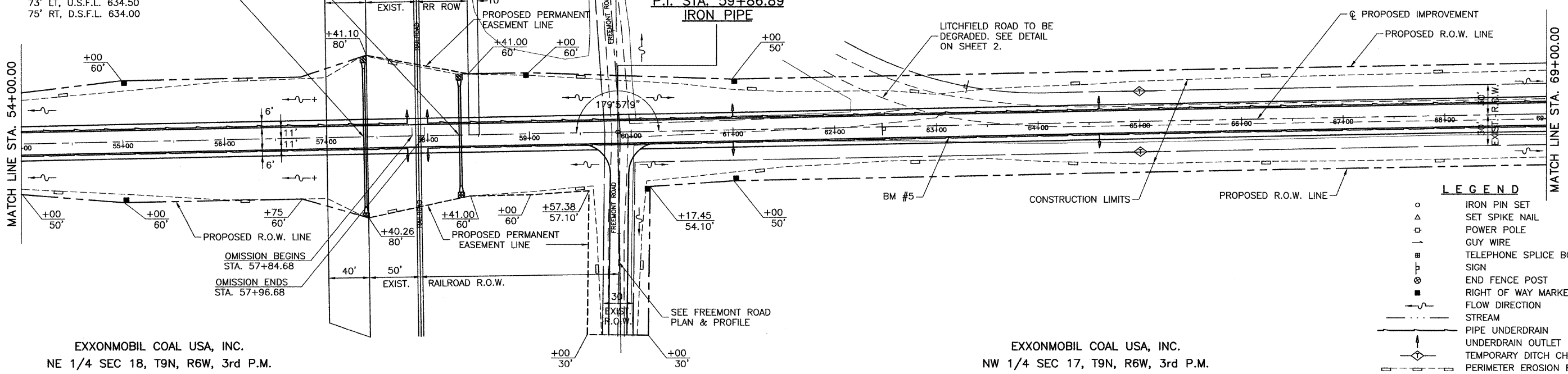
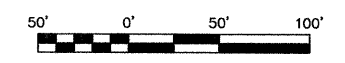
A.R. STA. 57+38
PIPE CULVERTS, CLASS A, TYPE 3
24" (R.C.C.P.) - 136' LONG
W/ STD. 542301 CONC. END
SECTIONS = 2 EACH
73' LT, U.S.F.L. 634.50
75' RT, D.S.F.L. 634.00

Easement from ExxonMobil Coal USA, Inc. to Union Pacific Railroad Document 480709 Macoupin County Recorder Macoupin County, Illinois

S.E. COR. SEC. 7
P.I. STA. 59+86.89
IRON PIPE

UNDERDRAIN SCHEDULE

LOCATION	PIPE UNDERDRAIN 4"	PIPE UNDERDRAIN 4" (SPECIAL)	CONCRETE HEADWALL FOR PIPE DRAINS
	FOOT	FOOT	EACH
LT. & RT. STA. 58+00 TO STA. 79+60	4320	-	-
LT. & RT. STA. 61+00	-	12	2
LT. & RT. STA. 64+60	-	12	2
TOTAL	4320	24	4

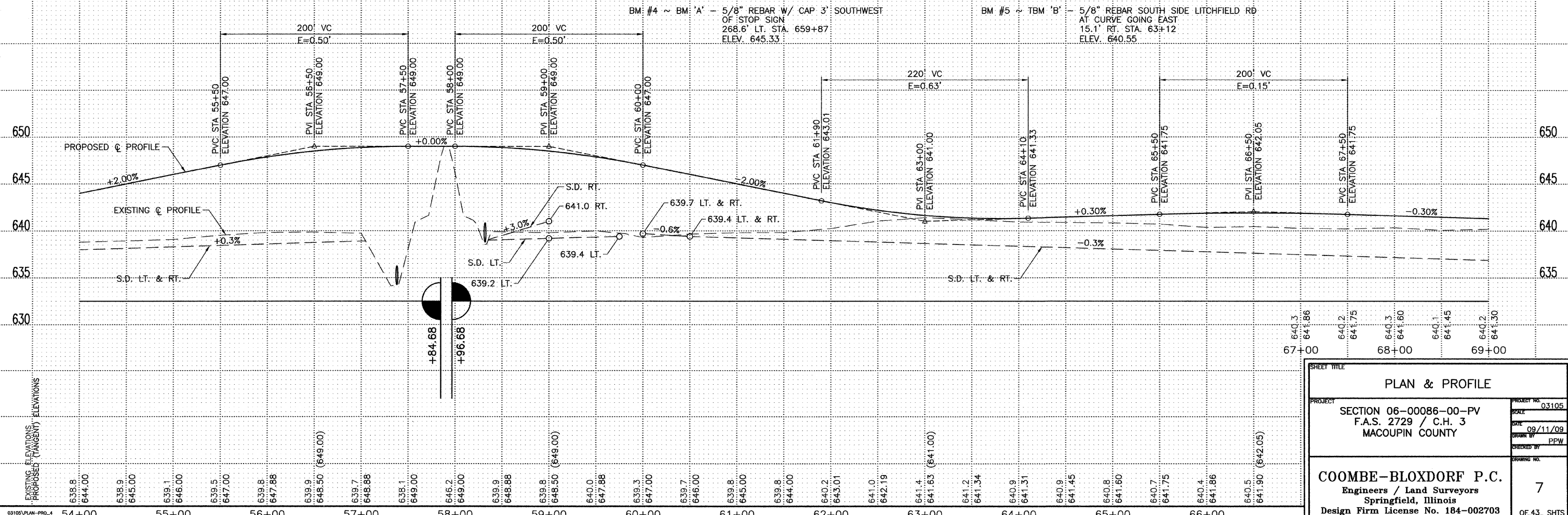


EXXONMOBIL COAL USA, INC.
NE 1/4 SEC 18, T9N, R6W, 3rd P.M.

EXXONMOBIL COAL USA, INC.
NW 1/4 SEC 17, T9N, R6W, 3rd P.M.

LEGEND

- IRON PIN SET
- △ SET SPIKE NAIL
- POWER POLE
- GUY WIRE
- ⊕ TELEPHONE SPLICE BOX
- ⊖ SIGN
- ⊗ END FENCE POST
- ⊙ RIGHT OF WAY MARKER
- FLOW DIRECTION
- STREAM
- PIPE UNDERDRAIN
- ⊥ UNDERDRAIN OUTLET
- TEMPORARY DITCH CHECK
- PERIMETER EROSION BARRIER



SHEET TITLE
PLAN & PROFILE

PROJECT: SECTION 06-00086-00-PV
F.A.S. 2729 / C.H. 3
MACOUPIN COUNTY

PROJECT NO. 03105
SCALE
DATE 09/11/09
DRAWN BY PPW
CHECKED BY
DRAWING NO.

COOMBE-BLOXDORF P.C.
Engineers / Land Surveyors
Springfield, Illinois
Design Firm License No. 184-002703

7
OF 43 SHTS