

EXXONMOBIL COAL USA, INC.
SW 1/4 SEC 8, T9N, R6W, 3rd P.M.

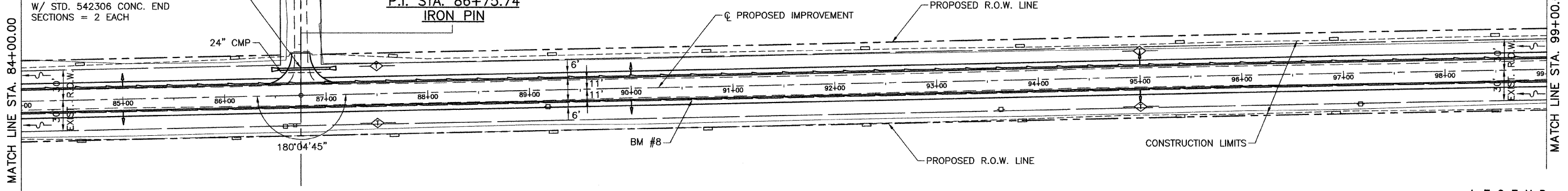
EXXONMOBIL COAL USA, INC.
SE 1/4 SEC 8, T9N, R6W, 3rd P.M.

ROUTE NO.	SECTION	COUNTY	TOTAL SHEETS	SHEET NO.
C.H. 3	06-00086-00-PV	MACOUPIN	43	9
FED. ROAD DIST. NO. 7		ILLINOIS	FED. AID PROJECT-	



STA. 86+75 SIDE ROAD (CAVALIER ROAD)
PIPE CULVERT, CLASS HE-IV, TYPE 1
24" (R.C.C.P.) EQRS, 45' LONG
W/ STD. 542306 CONC. END
SECTIONS = 2 EACH

S. 1/4 COR. SEC. 8
P.I. STA. 86+75.74
IRON PIN



UNDERDRAIN SCHEDULE

LOCATION	PIPE UNDERDRAIN 4"	PIPE UNDERDRAIN 4" (SPECIAL)	CONCRETE HEADWALL FOR PIPE DRAINS
	FOOT	FOOT	EACH
LT. & RT. STA. 85+00	-	12	2
LT. & RT. STA. 90+00	-	12	2
LT. & RT. STA. 95+00	-	12	2
TOTAL	-	36	6

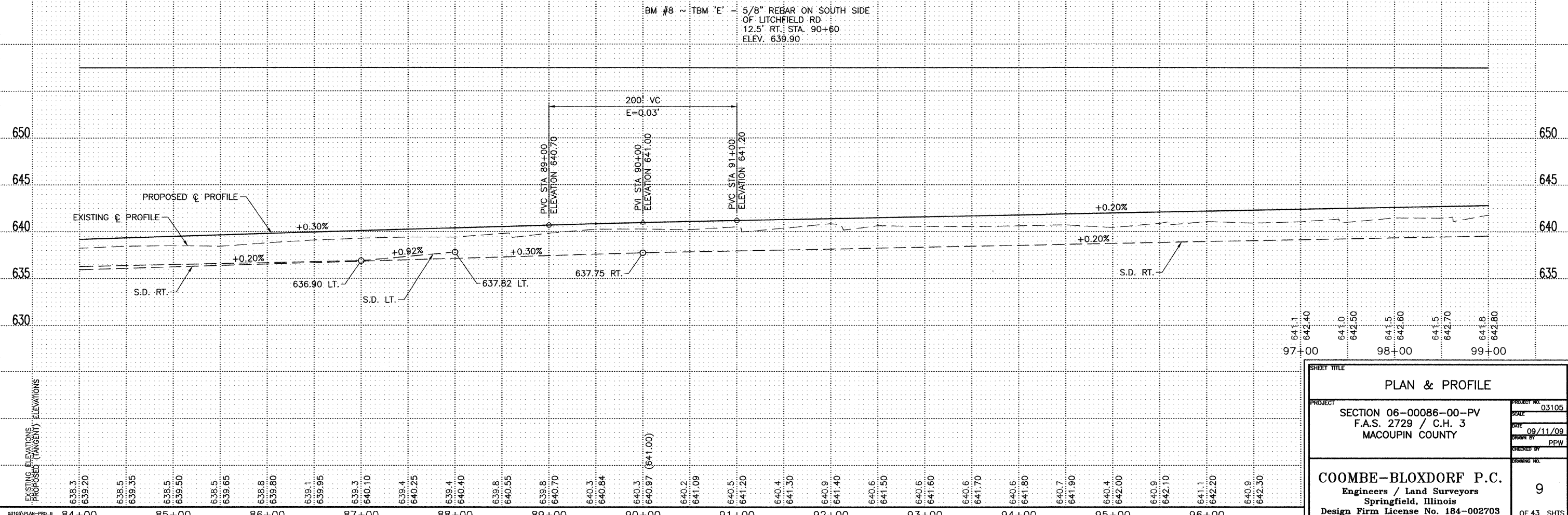
LEGEND

- IRON PIN SET
- △ SET SPIKE NAIL
- POWER POLE
- GUY WIRE
- ⊠ TELEPHONE SPLICE BOX
- ⊥ SIGN
- ⊙ END FENCE POST
- RIGHT OF WAY MARKER
- FLOW DIRECTION
- STREAM
- PIPE UNDERDRAIN
- ↑ UNDERDRAIN OUTLET
- ◇ TEMPORARY DITCH CHECK
- - - PERIMETER EROSION BARRIER

EXXONMOBIL COAL USA, INC.
NW 1/4 SEC 17, T9N, R6W, 3rd P.M.

EXXONMOBIL COAL USA, INC.
NE 1/4 SEC 17, T9N, R6W, 3rd P.M.

BM #8 ~ TBM 'E' - 5/8" REBAR ON SOUTH SIDE
OF LITCHFIELD RD
12.5' RT. STA. 90+60
ELEV. 639.90



PLAN & PROFILE	
PROJECT	SECTION 06-00086-00-PV F.A.S. 2729 / C.H. 3 MACOUPIN COUNTY
PROJECT NO.	03105
DATE	09/11/09
DESIGNED BY	PPW
CHECKED BY	
COOMBE-BLOXDORF P.C. Engineers / Land Surveyors Springfield, Illinois Design Firm License No. 184-002703	
9	
OF 43 SHTS	