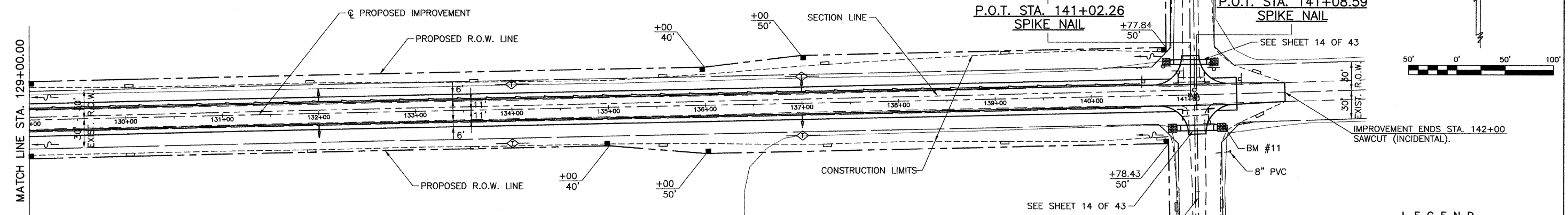
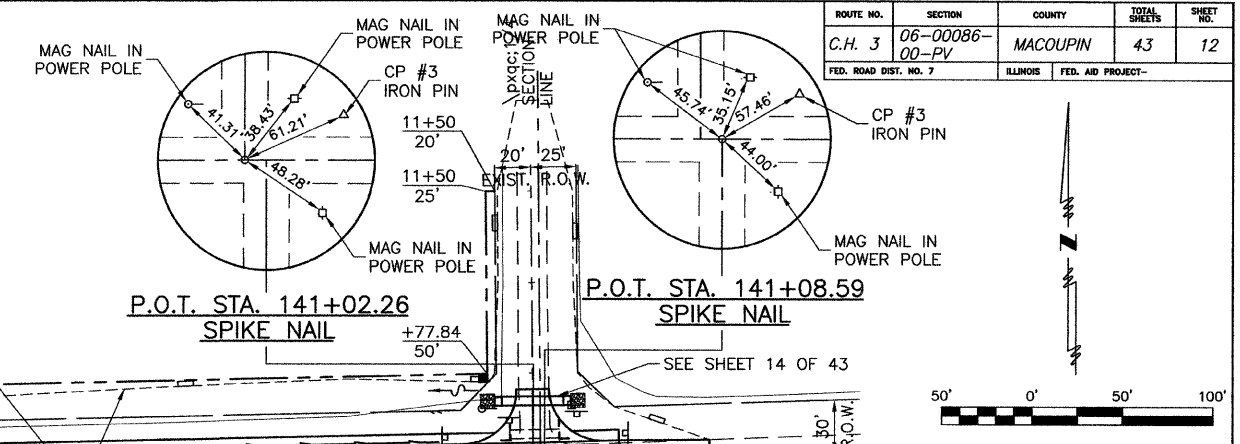


ROUTE NO.	SECTION	COUNTY	TOTAL SHEETS	SHEET NO.
C.H. 3	06-00086-00-PV	MACOUPIN	43	12
FED. ROAD DIST. NO. 7		ILLINOIS	FED. AID PROJECT-	

PERIMETER EROSION BARRIER SCHEDULE

LOCATION	LENGTH
	FOOT
LT. STA. 127+65 TO STA. 142+00	1728
RT. STA. 127+65 TO STA. 142+00	1724
TOTAL	3452

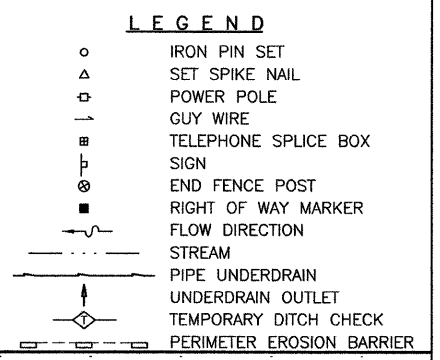
EXXONMOBIL COAL USA, INC.
SW 1/4 SEC 9, T9N, R6W, 3rd P.M.



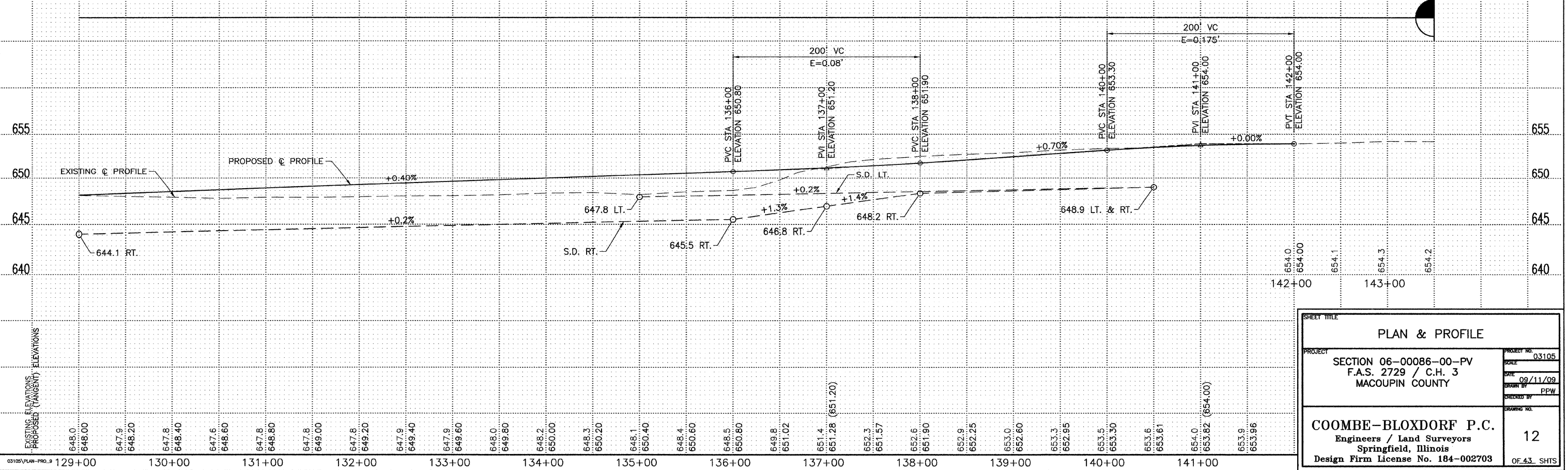
UNDERDRAIN SCHEDULE

LOCATION	PIPE UNDERDRAIN 4"	PIPE UNDERDRAIN 4" (SPECIAL)	CONCRETE HEADWALL FOR PIPE DRAINS
	FOOT	FOOT	EACH
LT. & RT. STA. 132+00	-	12	2
LT. & RT. STA. 137+00	-	12	2
TOTAL	-	24	4

EXXONMOBIL COAL USA, INC.
NW 1/4 SEC 16, T9N, R6W, 3rd P.M.



BM #11 ~ TBM 'J' - RR SPIKE IN POWER POLE AT SOUTHEAST QUADRANT OF INTERSECTION OF LITCHFIELD RD AND COTTONWOOD RD
33.8' RT. STA. 141+36
ELEV. 654.95



SHEET TITLE
PLAN & PROFILE

PROJECT
SECTION 06-00086-00-PV
F.A.S. 2729 / C.H. 3
MACOUPIN COUNTY

PROJECT NO. 03105
SCALE
DATE 09/11/09
DRAWN BY PPW
CHECKED BY
DRAWING NO.

COOMBE-BLOXDORF P.C.
Engineers / Land Surveyors
Springfield, Illinois
Design Firm License No. 184-002703

12
OF 43 SHTS