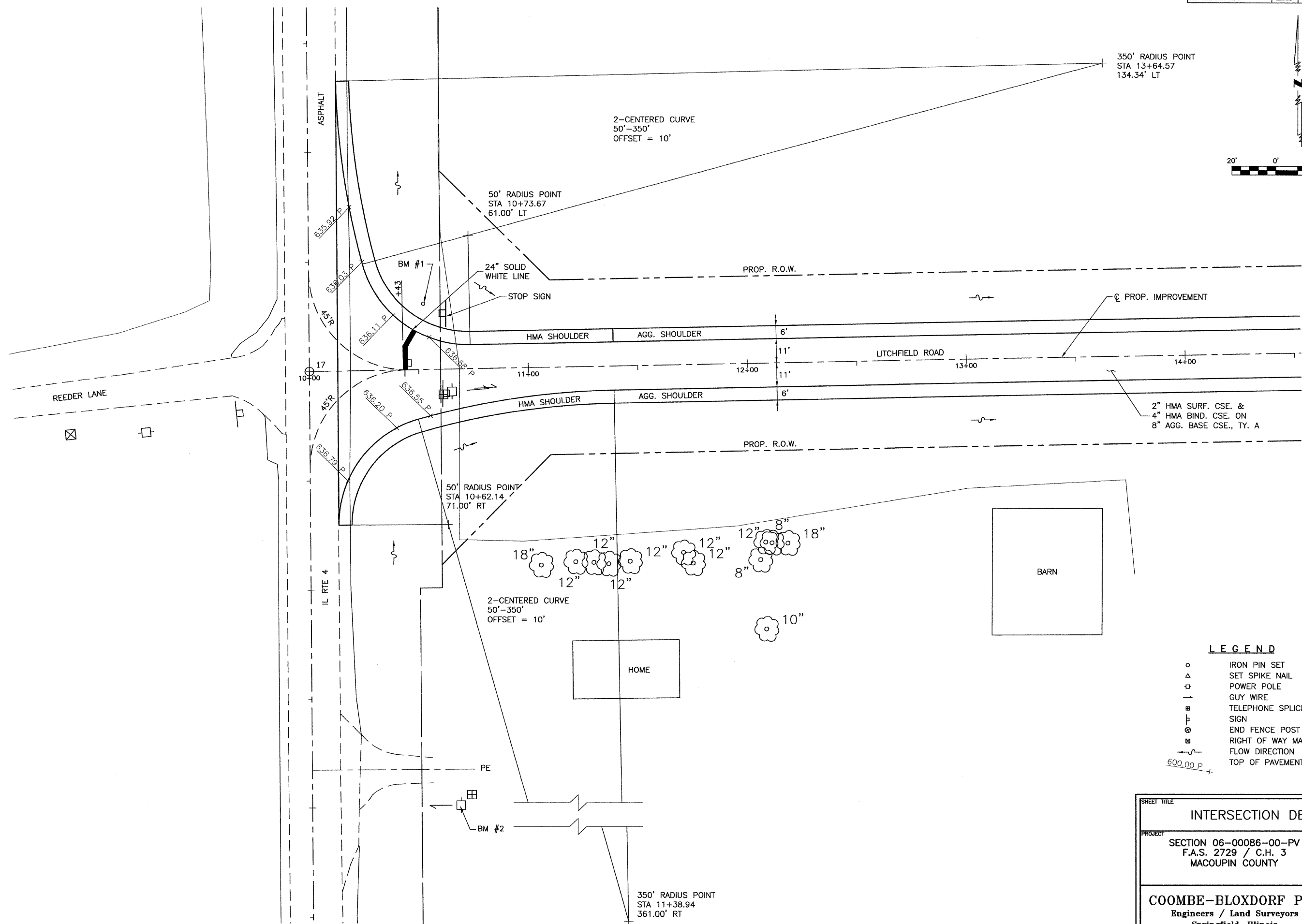
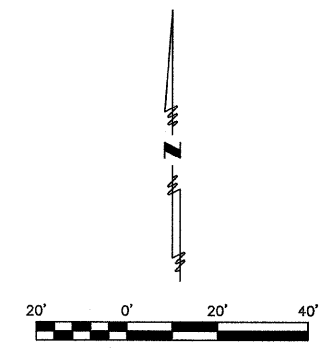


ROUTE NO.	SECTION	COUNTY	TOTAL SHEETS	SHEET NO.
C.H. 3	06-00086-00-PV	MACOUPIN	43	15
FED. ROAD DIST. NO. 7		ILLINOIS	FED. AID PROJECT-	



LEGEND

- IRON PIN SET
- △ SET SPIKE NAIL
- ⊕ POWER POLE
- GUY WIRE
- ⊞ TELEPHONE SPLICE BOX
- ⊞ SIGN
- ⊞ END FENCE POST
- ⊞ RIGHT OF WAY MARKER
- FLOW DIRECTION
- 600.00 P + TOP OF PAVEMENT ELEVATION

SHEET TITLE	
INTERSECTION DETAIL	
PROJECT	SECTION 06-00086-00-PV F.A.S. 2729 / C.H. 3 MACOUPIN COUNTY
PROJECT NO.	03105
SCALE	1"=20'
DATE	4/20/09
DRAWN BY	PPW
CHECKED BY	MRL
COOMBE-BLOXDORF P.C. Engineers / Land Surveyors Springfield, Illinois Design Firm License No. 184-002703	
15 OF 43 SHTS	