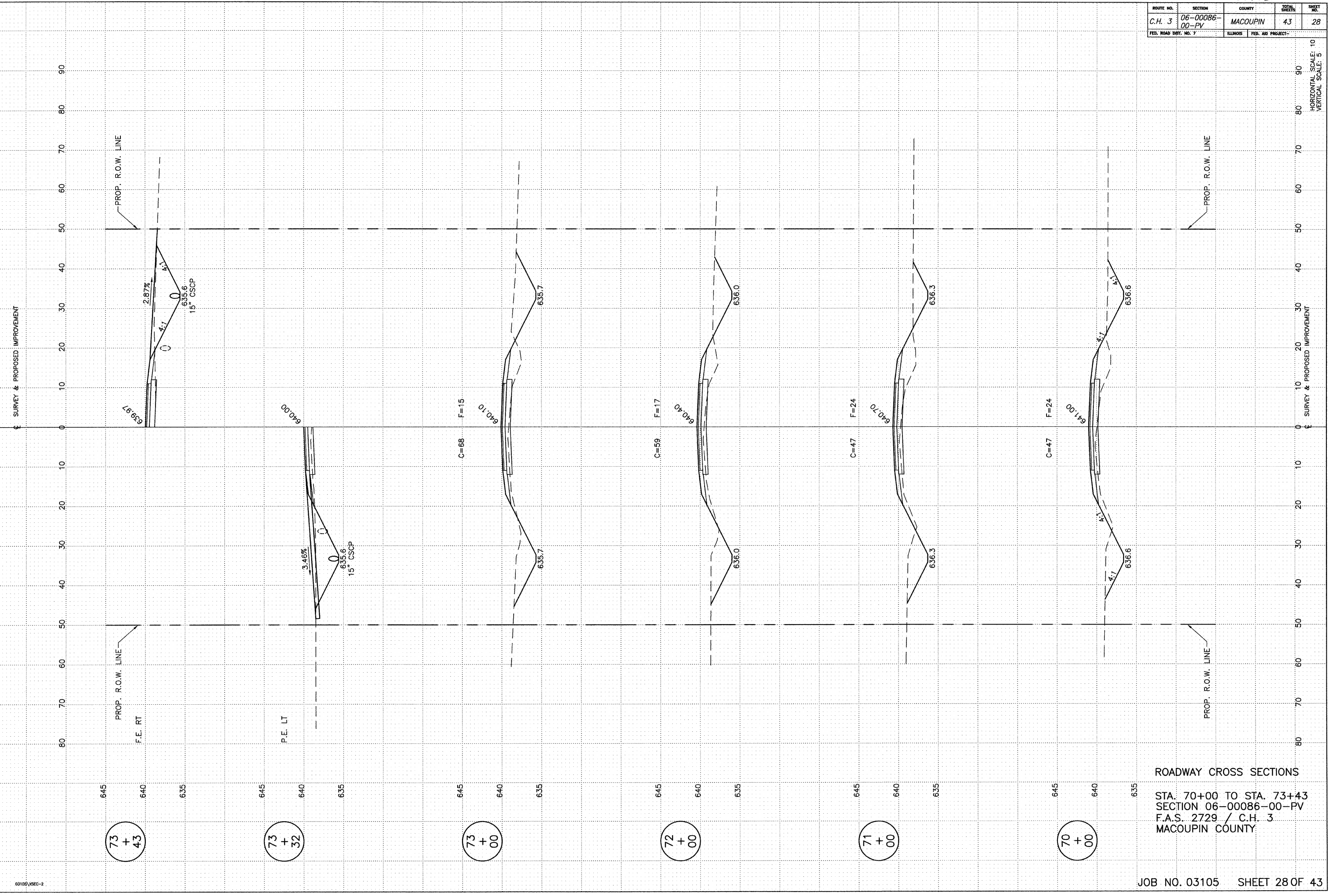


ROUTE NO.	SECTION	COUNTY	TOTAL SHEETS	SHEET NO.
C.H. 3	06-00086-00-PV	MACOUPIN	43	28
FED. ROAD DIST. NO. 7		ILLINOIS FED. AID PROJECT-		

HORIZONTAL SCALE: 1" = 10'
VERTICAL SCALE: 1" = 5'



ROADWAY CROSS SECTIONS

STA. 70+00 TO STA. 73+43
SECTION 06-00086-00-PV
F.A.S. 2729 / C.H. 3
MACOUPIN COUNTY