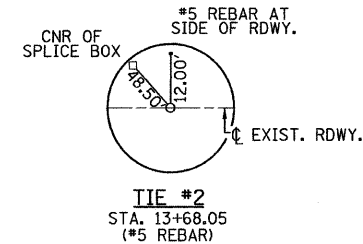
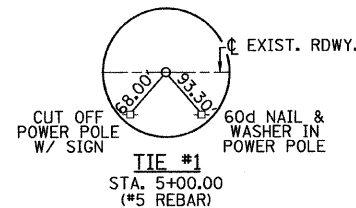
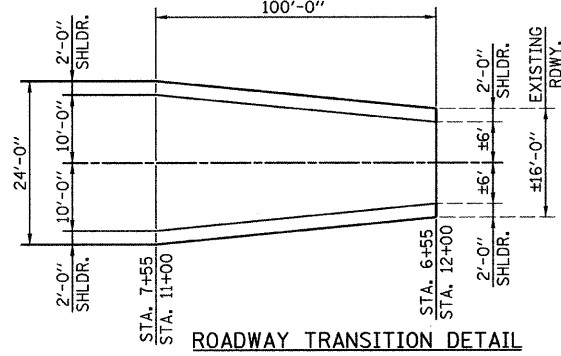
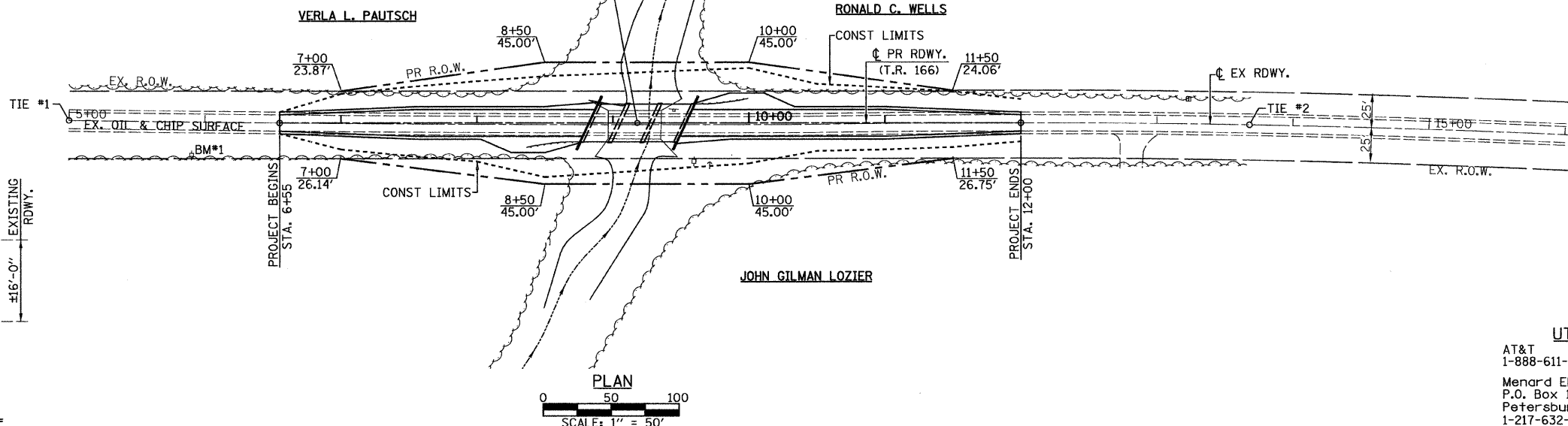


SECTIONS 4 & 5, T. 20 N., R. 5 W. 3rd P.M.



STA. 9+18.00 - @ RDWY. AT @ STRUCTURE
PROPOSED STRUCTURE: THREE SPAN PRECAST
PRESTRESSED CONCRETE DECK BEAM BRIDGE (17"
DEPTH) ON OPEN CONCRETE ABUTMENTS AND PILE
BENT PIERS. 28'-0" OUT-OUT DECK, 72'-0" BK.-BK.
ABUTMENTS, 21'-5" (SPANS 1 & 3), 23'-7 1/2" (SPAN 2),
STEEL RAILING, TYPE S-1. 25° SKEW LT. FWD.

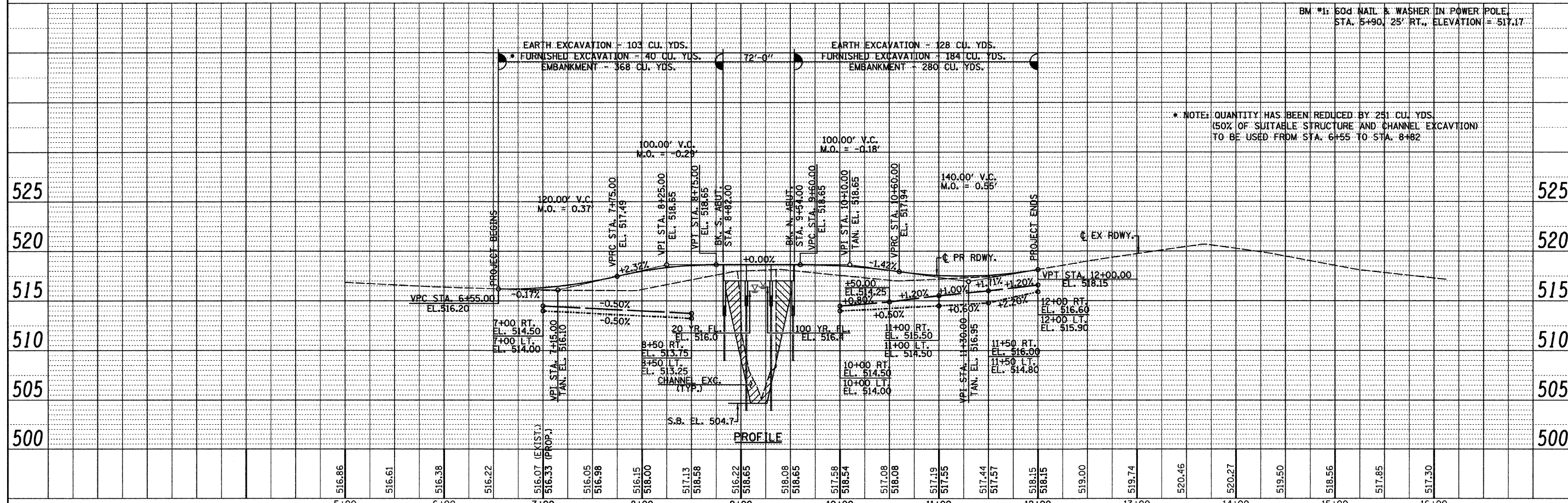


UTILITIES

AT&T
1-888-611-4466
Menard Electric Cooperative
P.O. Box 100
Petersburg, Illinois 62675
1-217-632-7746

DATE	
BY	
SURVEYED	
ALIGNED	
CHECKED	
NOTE BOOK	
FILE NAME	

DATE	
BY	
SURVEYED	
GRADES CHECKED	
NOTE BOOK	
FILE NAME	



* NOTE: QUANTITY HAS BEEN REDUCED BY 251 CU. YDS.
(50% OF SUITABLE STRUCTURE AND CHANNEL EXCAVATION)
TO BE USED FROM STA. 6+55 TO STA. 8+82

FILE NAME =	USER NAME = *USER*	DESIGNED -	REVISED -	<p>Allen Henderson & Associates, Inc. Civil and Structural Engineers Springfield, IL 62703 Phone: (217)544-8033 IL Design Firm No. 184-001907</p>	<p>ROADWAY PLAN & PROFILE</p>	T.R.	SECTION	COUNTY	TOTAL SHEETS	SHEET NO.
FILE#		CHECKED -	REVISED -			166	08-10110-00-BR	MENARD	17	3
PLOT SCALE = *SCALE*		DRAWN -	REVISED -			CONTRACT NO. 98510				
PLOT DATE = *DATE*		CHECKED -	REVISED -			SCALE: 1" = 50' SHEET NO. 3 OF 17 SHEETS STA. 6+55.00 TO STA. 12+00.00		FED. ROAD DIST. NO.	ILLINOIS FED. AID PROJECT	