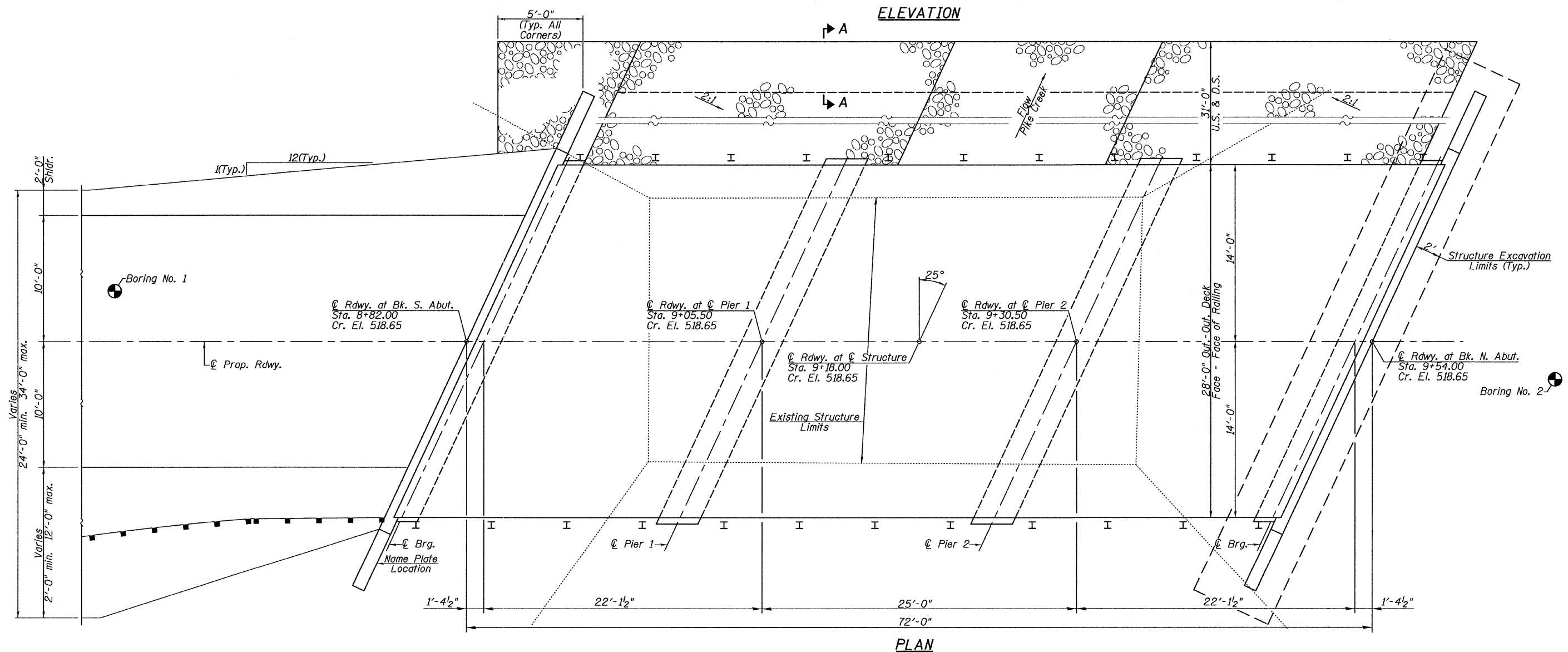
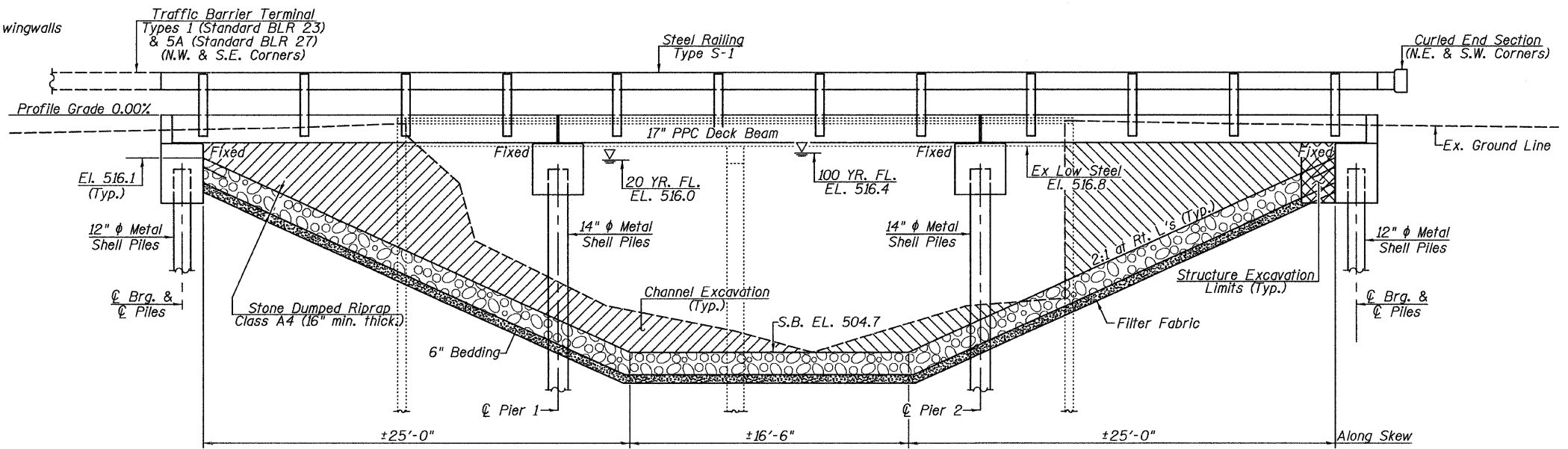



Existing Structure: Two span timber deck on steel stringers supported by closed timber abutments with timber wingwalls and a pile bent pier. ±40'-6" Bk.-Bk. Abutments, ±20'-6" Out.-Out. Deck, Timber Curbs and Steel Railing. ±0° Skew.

Benchmark: BM #1: 60d Nail & Washer in Power Pole, Sta. 5+90, 25' Rt., Elevation = 517.17

Estimated Quantity to be Removed: Structural Steel - 15,000 Lbs
Concrete Structures - 0 Cu. Yds.



| | | | | | | | | | | | |
|-------------|--------------------|----------------|-----------|--|---|--------------------------|--------------------|----------------|--------|--------------|-----------|
| FILE NAME = | USER NAME = #USER# | DESIGNED - MAH | REVISED - |  Allen Henderson & Associates, Inc. Civil and Structural Engineers Springfield, IL 62703 Phone: (217)544-8033 IL Design Firm No. 184-001907 | GENERAL PLAN & ELEVATION | | T.R. RTE. | SECTION | COUNTY | TOTAL SHEETS | SHEET NO. |
| #FILE# | | DRAWN - MJS | REVISED - | | SCALE: | SHEET NO. 4 OF 17 SHEETS | 166 | 08-10110-00-BR | MENARD | 17 | 4 |
| | | CHECKED - | REVISED - | | STA. 6+55.00 TO STA. 12+00.00 | | | | | | |
| | | DATE - | REVISED - | | FED. ROAD DIST. NO. ILLINOIS FED. AID PROJECT | | CONTRACT NO. 93510 | | | | |