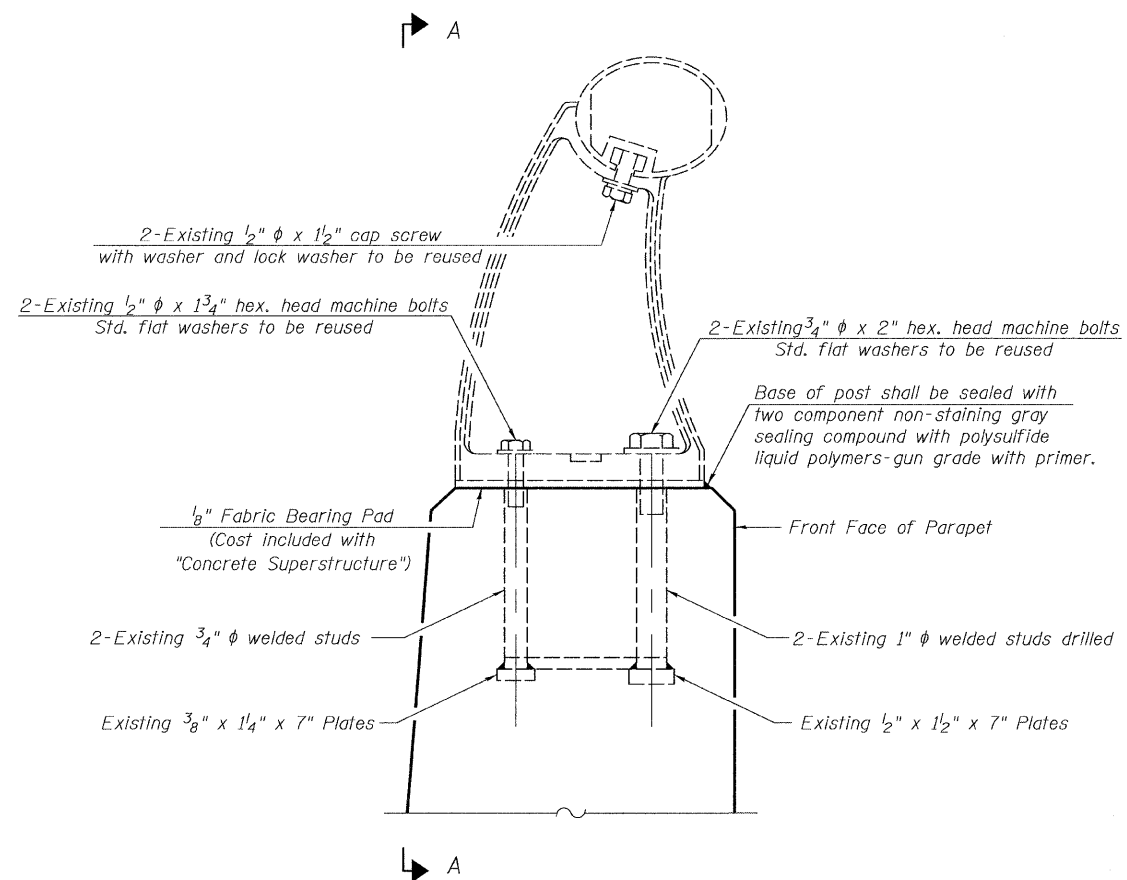



VIEW A-A

Note: The cost of removing the existing rail post, removing and cleaning the existing railpost anchors and fasteners, and reinstalling the rail post is included with the cost of "Concrete Superstructure".



RAIL SUPPORT AND ANCHOR DETAILS  
 F.A.S. ROUTE 559 OVER KICKAPOO CREEK  
 S.N. 054-3003

 <b>Allen Henderson &amp; Associates, Inc.</b> Civil and Structural Engineers Springfield, IL. 62703 Phone: (217)544-8033 IL. Design Firm No. 184-001907	SHEET NO. 15	F.A.S. RTE.	SECTION	COUNTY	TOTAL SHEETS	SHEET NO.
	20 SHEETS	559	09-00074-01-BR	LOGAN	22	17
					CONTRACT NO. 93511	
FED. ROAD DIST. NO. _ ILLINOIS FED. AID PROJECT						