

Notes:

Anchor bolts shall be ASTM F1554 all-thread (or an Engineer-approved alternate material) of the grade(s) and diameter(s) specified. ASTM A307 Grade C anchor bolts may be used in lieu of ASTM F1554 Grade 36 (Fy=36ksi). The corresponding specified grade of AASHTO M314 anchor bolts may be used in lieu of ASTM F1554.

Drilled and set anchor bolts shall be installed according to Article 521.06 of the Standard Specifications.

Side retainers and other steel members required for the bearing assembly shall be included in the cost of Elastomeric Bearing Assembly, Type I.

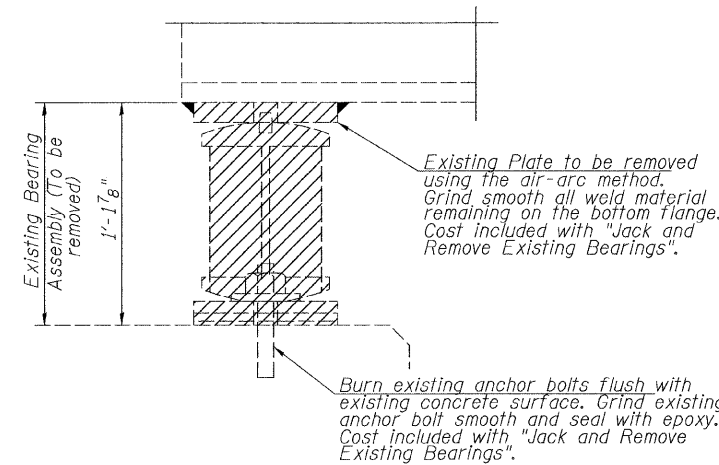
Existing bearings at the south abutment and south side of Pier 2 shall be removed and replaced according to the plans. Jacking shall be according to the Special Provision for "Jack and Remove Existing Bearings". If web stiffeners are not present directly over the jack location, hardwood timbers shall be installed tightly between top and bottom flanges to prevent rotation. The bearings shall be in place and the jacks lowered before the new concrete deck is poured at the abutment and pier.

Diaphragm removal and replacement may be required to facilitate drilling holes. Cost shall be included with Furnishing and Erecting Structural Steel.

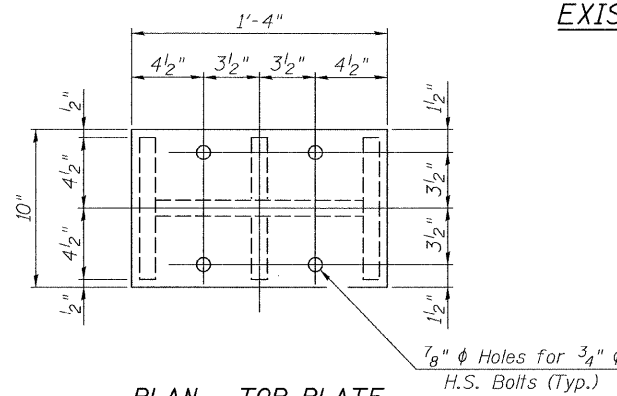
New steel extensions and connection bolts are included with Furnishing and Erecting Structural Steel.

Prior to ordering any material, the Contractor shall verify in the field all bearing heights and shim thickness dimensions.

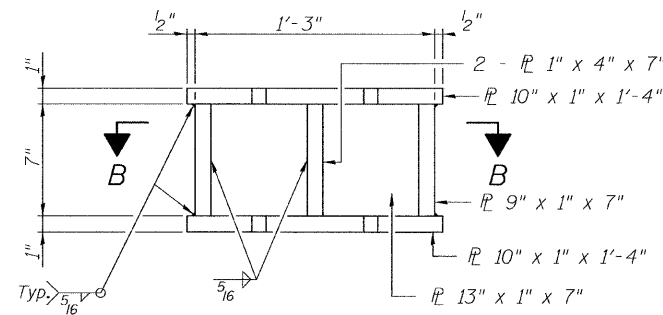
The structural steel bearing plates for the expansion bearings shall conform to the requirements of AASHTO M270 Grade 50.



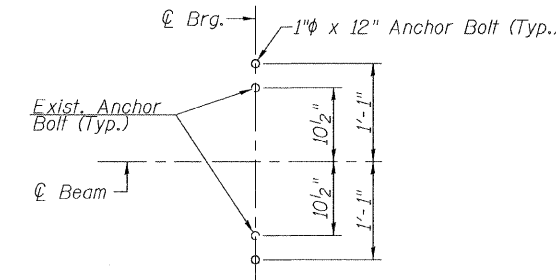
EXISTING BEARING REMOVAL DETAIL



PLAN - TOP PLATE

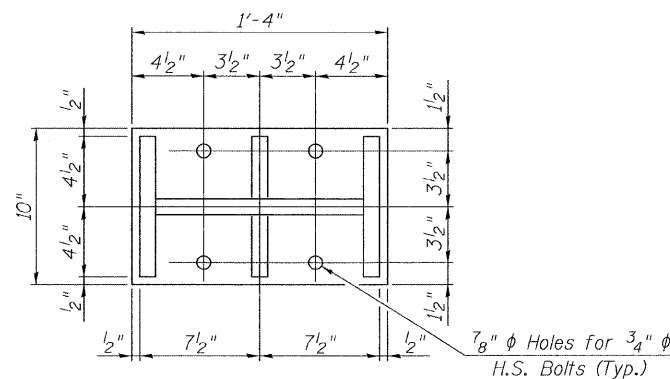


ELEVATION STEEL EXTENSION

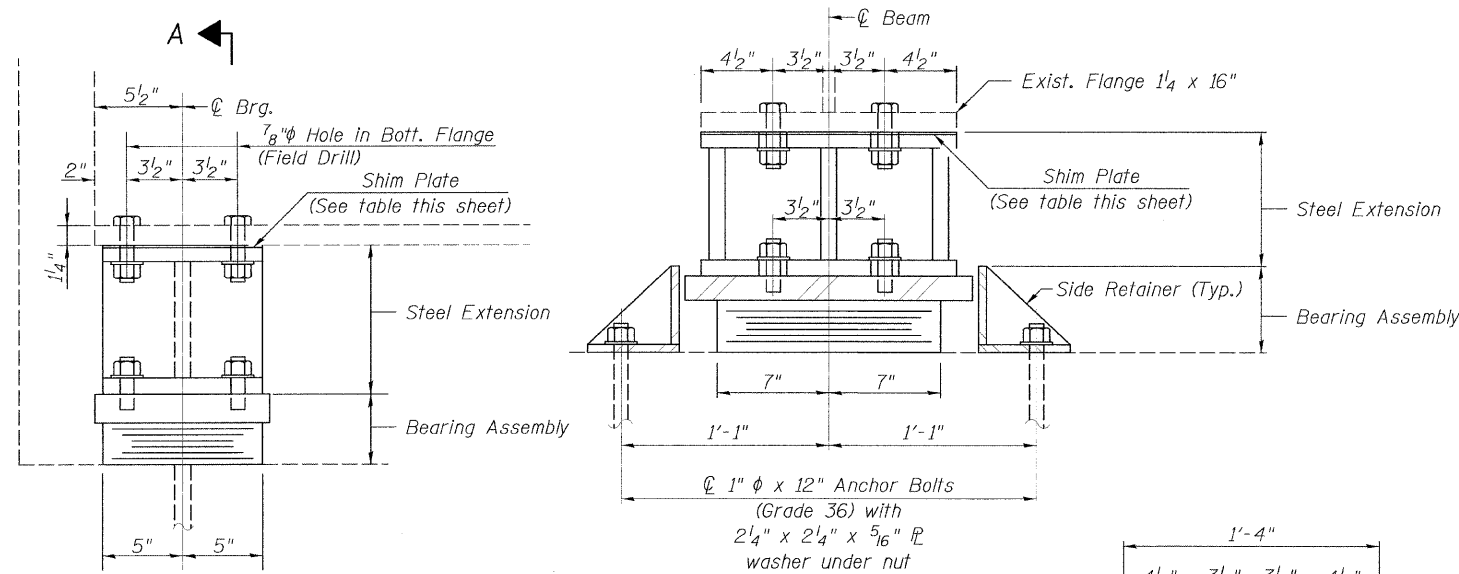


ANCHOR BOLT SETTING DETAIL

SHIM PLATE THICKNESS 'I'					
Location	BM 1	BM 2	BM 3	BM 4	BM 5
☉ Brg. S. Abut.	0"	0"	0"	0"	0"
Pier 2	0"	0"	3/8"	1/4"	0"



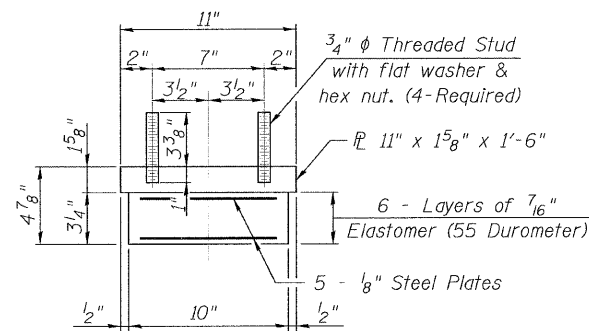
SECTION B-B



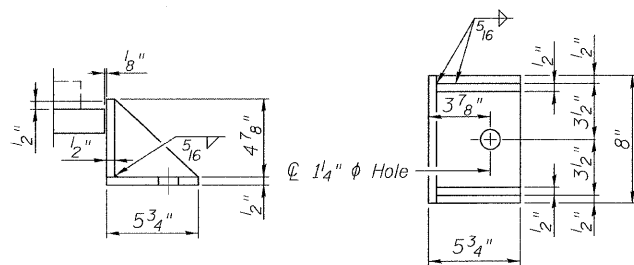
SECTION A-A

ELEVATION AT S. ABUTMENT AND PIER 2-SOUTH BRG.

TYPE I ELASTOMERIC EXP. BRG.



BEARING ASSEMBLY



SIDE RETAINER

Equivalent rolled angle with stiffeners will be allowed in lieu of welded plates.

INTERIOR GIRDER REACTION TABLE		
R (DL)	(K)	46.9
R (LL)	(K)	45.3
R (IMP)	(K)	10.1
R (TOTAL)	(K)	102.3
Minimum Jack Capacity	(Tons)	56

BILL OF MATERIAL

Item	Unit	Total
Elastomeric Bearing Assembly, Type I	Each	10
Anchor Bolts, 1"	Each	20
Jack and Remove Existing Bearings	Each	10
Furnishing and Erecting Structural Steel	Pound	1805

BEARING DETAILS
F.A.S. ROUTE 559 OVER KICKAPOO CREEK
S.N. 054-3003



Allen Henderson & Associates, Inc.
Civil and Structural Engineers Springfield, IL
62703 Phone: (217)544-8033 IL Design Firm
No. 184-001907

SHEET NO. 18
20 SHEETS

F.A.S. RTE.	SECTION	COUNTY	TOTAL SHEETS	SHEET NO.
559	09-00074-01-BR	LOGAN	22	20
CONTRACT NO. 93511				
FED. ROAD DIST. NO. - ILLINOIS FED. AID PROJECT				