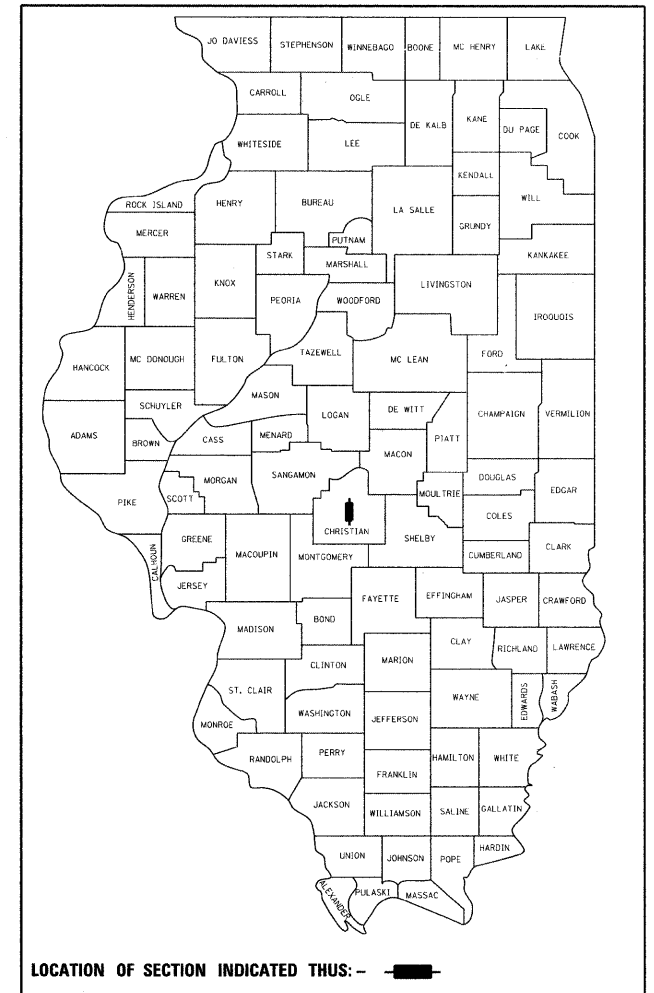


F.A.U. RTE.	SECTION	COUNTY	TOTAL SHEETS	SHEET NO.
7877	09-00060-00-RS	CHRISTIAN	14	1
FED. ROAD DIST. NO.	ILLINOIS	CONTRACT NO. 93512		

**STATE OF ILLINOIS
DEPARTMENT OF TRANSPORTATION
DIVISION OF HIGHWAYS**

**PLANS FOR
PROPOSED LOCAL AGENCY IMPROVEMENTS
SURFACE TRANSPORTATION / URBAN PROGRAM
AMERICAN RECOVERY & REINVESTMENT ACT**

**SPRESSER STREET / FAU ROUTE 7877
SECTION 09-00060-00-RS
CITY OF TAYLORVILLE
PROJECT ARA-M-5067(017)
JOB NUMBER C-96-241-10**



LOCATION OF SECTION INDICATED THUS: - ■ -

INDEX OF SHEETS

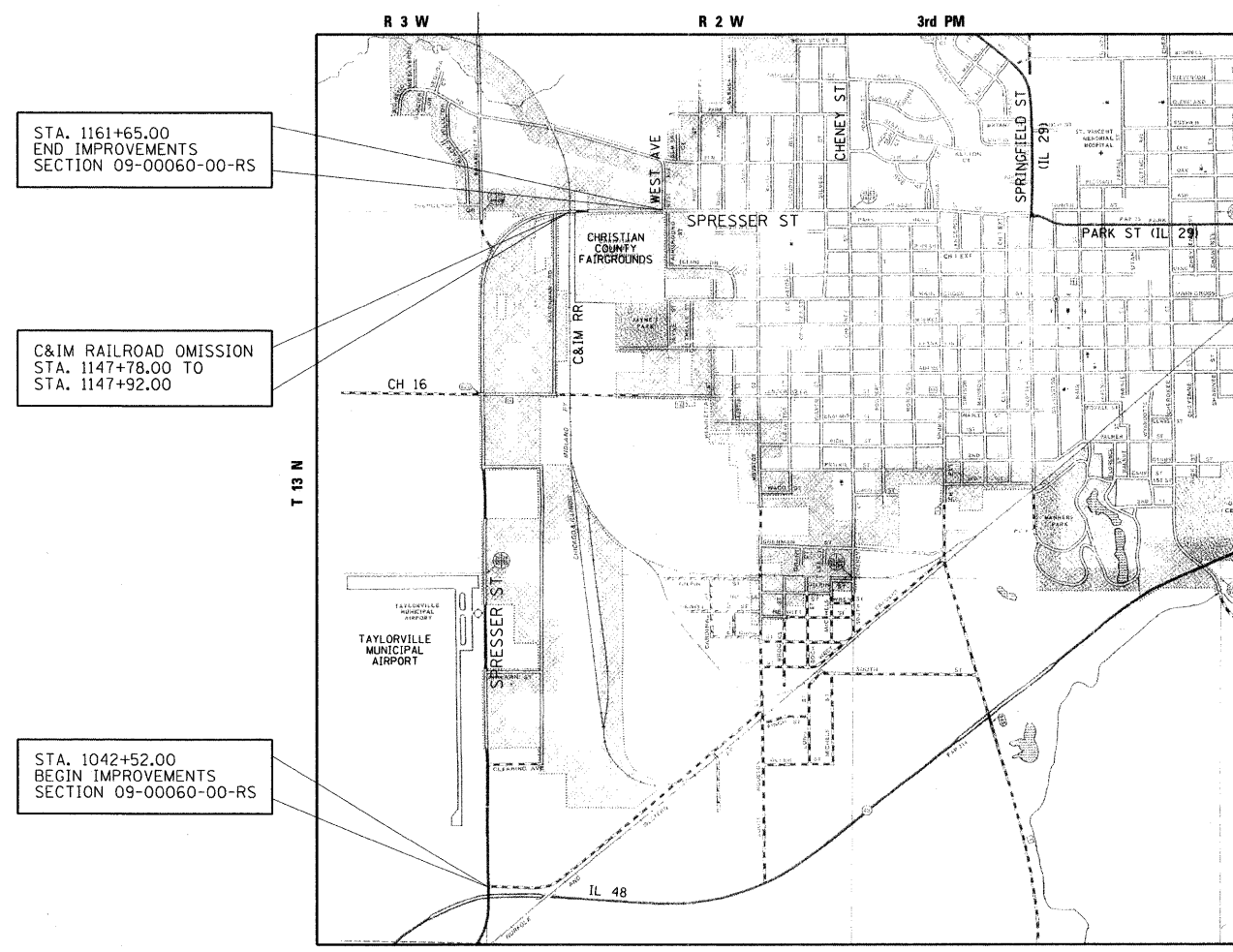
SHEET NO.	DESCRIPTION
1	COVER SHEET
2	SUMMARY OF QUANTITIES & GENERAL NOTES
3	TYPICAL SECTIONS
4 - 5	DETAILS
6 - 8	SCHEDULE OF QUANTITIES
9	HORIZONTAL AND VERTICAL CONTROL
10 - 14	PLAN

STANDARDS

000001-05	STANDARD SYMBOLS, ABBREVIATIONS AND PATTERNS
406201-01	MAILBOX TURNOUT
701301-03	LANE CLOSURE, 2L, 2W, SHORT TIME OPERATION
701306-02	LANE CLOSURE, 2L, 2W, SLOW MOVING OPERATIONS, DAY ONLY, FOR SPEEDS >= 45 MPH
701311-03	LANE CLOSURE, MOVING OPERATION, DAY ONLY
701901-01	TRAFFIC CONTROL DEVICES
780001-02	TYPICAL PAVEMENT MARKINGS

UTILITIES

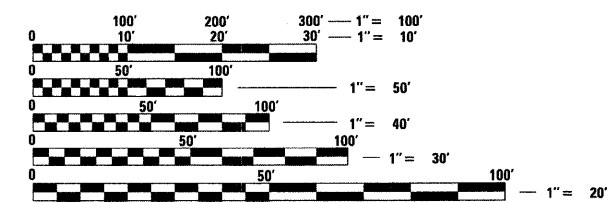
- AMEREN CIPS
- NEW WAVE COMMUNICATIONS
- IL CONSOLIDATED TELEPHONE
- RURAL ELECTRIC CONVICENCE COOPERATIVE CO.
- CITY OF TAYLORVILLE
- TAYLORVILLE SANITARY DISTRICT
- MEDIA COM



STA. 1161+65.00
END IMPROVEMENTS
SECTION 09-00060-00-RS

C&M RAILROAD OMISSION
STA. 1147+78.00 TO
STA. 1147+92.00

STA. 1042+52.00
BEGIN IMPROVEMENTS
SECTION 09-00060-00-RS



FULL SIZE PLANS HAVE BEEN PREPARED USING STANDARD ENGINEERING SCALES. REDUCED SIZED PLANS WILL NOT CONFORM TO STANDARD SCALES. IN MAKING MEASUREMENTS ON REDUCED PLANS, THE ABOVE SCALES MAY BE USED.

J.U.L.I.E.
JOINT UTILITY LOCATION INFORMATION FOR EXCAVATION
1-800-892-0123
OR 811

**PROJECT ENGINEER
PROJECT MANAGER**

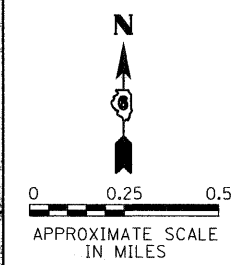
CONTRACT NO. 93512

DESIGN DESIGNATION

COLLECTOR: ADT = 6000
LAPP POLICY

LOCATION MAP

GROSS LENGTH OF PROJECT = 11,913.00 FEET = 2.256 MILES
NET LENGTH OF PROJECT = 11,899.00 FEET = 2.254 MILES



APPROXIMATE SCALE IN MILES



William C. Bott 11/20/09
EXPIRES: 11/30/11

APPROVED	<i>Nov. 20</i> <i>Greg Bratherton</i> CITY MAYOR	20 09
PASSED	<i>Nov 30</i> <i>Tom J...</i> DISTRICT SIX ENGINEER OF LOCAL ROADS & STREETS	20 09
PASSED	<i>November 30,</i> <i>Ron Buchanan</i> DISTRICT SIX ENGINEER OF CONSTRUCTION	20 09
Releasing For Bid Based on Limited Review	<i>Nov 30</i> <i>Roger D. Orsball</i> DEPUTY DIRECTOR OF HIGHWAYS, REGION FOUR ENGINEER	20 09

**PRINTED BY THE AUTHORITY
OF THE STATE OF ILLINOIS**

COMPUTER FILE NO. 0900207-sht-cover.dgn	PROJECT 09002.07 11/18/09 - FAV
--------------------------------------------	---------------------------------------

PLOT DATE = 11/19/2009 2:38:10 PM
 PLOT NAME = J:\0900207\CADD\CUsers\0900207-sht-cover.dgn
 PLOT SCALE = 50/0000 // in.
 PLOT DRIVER = VBA_DS700_PS_LOCAL.plt;g
 OPERATOR = Franky
 GREENE & BRADFORD, INC.
 807 1/2 S. W. 11th St., Suite 100, Oklahoma City, Oklahoma 73109
 TEL: 405.505.1100 FAX: 405.505.1101
 WWW.GREENE-AND-BRADFORD.COM



GENERAL NOTES

- WHEN SECTION OR SUB-SECTION MONUMENTS ARE ENCOUNTERED, THE ENGINEER SHALL BE NOTIFIED BEFORE SUCH MONUMENTS ARE REMOVED. THE CONTRACTOR SHALL PROTECT AND CAREFULLY PRESERVE ALL PROPERTY MARKS AND MONUMENTS UNTIL THE OWNER OR AN AUTHORIZED SURVEYOR OR AGENT HAS WITNESSED OR OTHERWISE REFERENCED THEIR LOCATION.
- ALL PLAN ELEVATIONS REPRESENT USGS DATUM.
- PRIOR TO THE PLACEMENT OF CRACK CONTROL TREATMENT, THE PAVEMENT SHALL BE INSPECTED BY THE ENGINEER AND ALL POT HOLES AND DEPRESSIONS SHALL BE FILLED AND COMPACTED WITH LEVELING BINDER (HAND METHOD).
- THE FOLLOWING APPLICATIONS RATES WERE USED IN THE DEVELOPMENT OF PLAN QUANTITIES:

COARSE AGGREGATE	2.05 TON / CU YD
BITUMINOUS MATERIALS (PRIME COAT)	0.08 GAL / SQ YD
AGGREGATE (PRIME COAT)	0.002 TON / SQ YD
HOT-MIX ASPHALT	112 POUNDS / SQ YD / INCH

- THE FOLLOWING MIXTURE REQUIREMENTS SHALL APPLY TO THIS PROJECT:

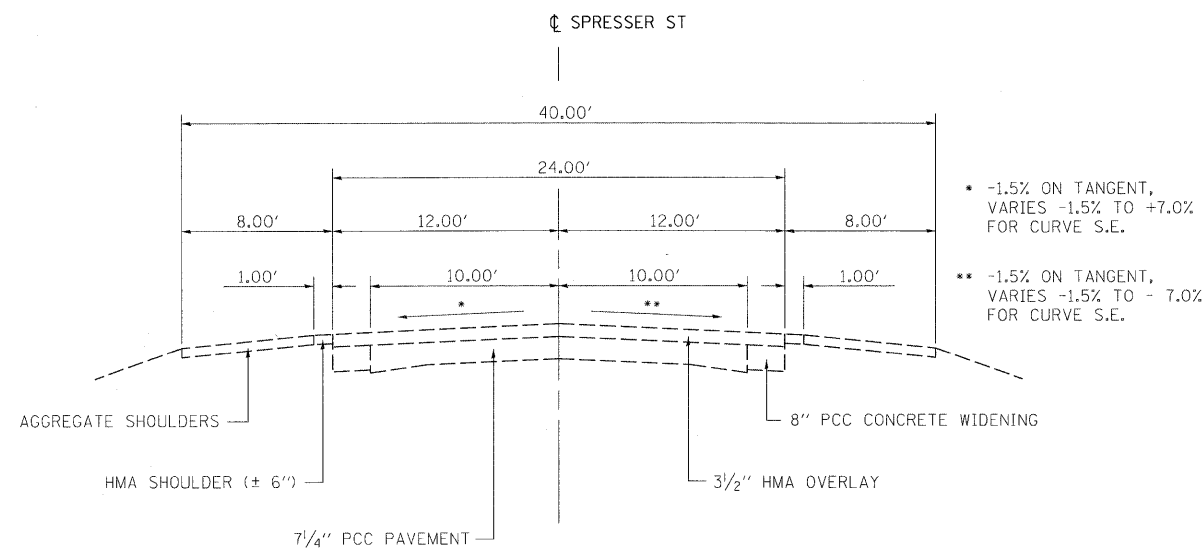
HOT-MIX ASPHALT MIXTURE REQUIREMENTS			
ITEM	AGGREGATE COMPOSITION	ASPHALT GRADE	VOIDS
LEVELING BINDER	IL-9.5 or 12.5	SBS PG 70-22	4.0% @ N70
HMA SURFACE COURSE	IL-9.5 or 12.5 Mix "C"	SBS PG 70-22	4.0% @ N70
HMA SURFACE COURSE	IL-9.5 or 12.5 Mix "D"	SBS PG 70-22	4.0% @ N70
INCIDENTAL SURFACE	IL-9.5 or 12.5 Mix "C"	PG 64-22	4.0% @ N50

SUMMARY OF QUANTITIES

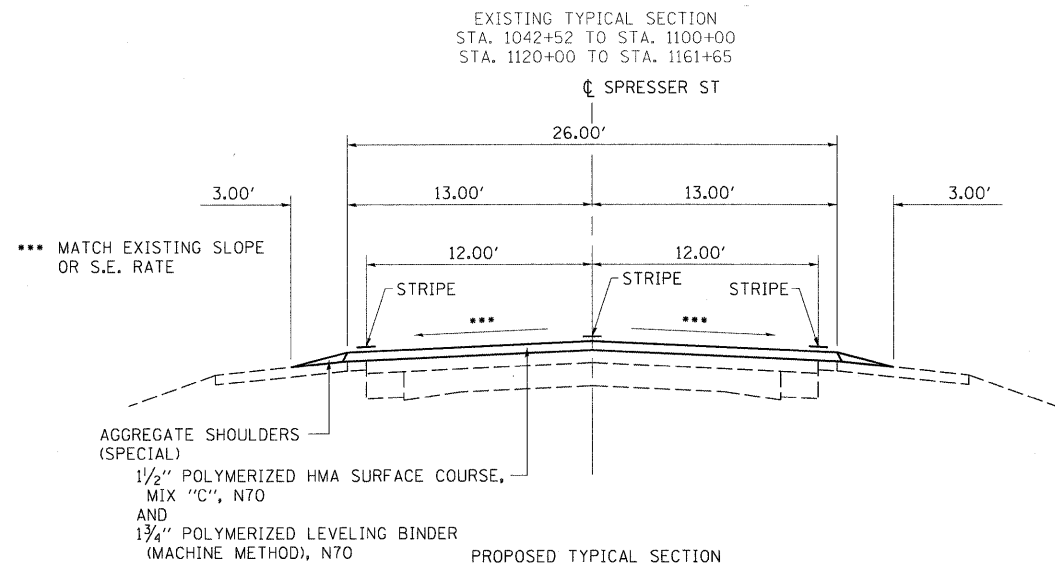
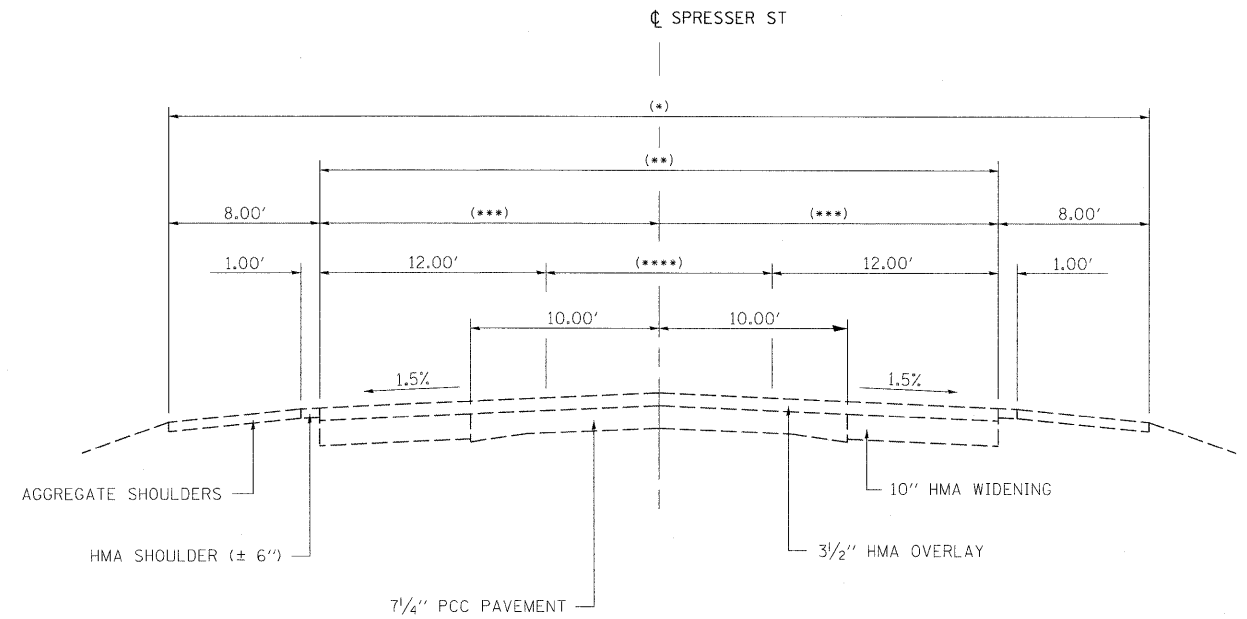
PAY ITEM	ITEM	UNIT	TOTAL
40200800	AGGREGATE SURFACE COURSE, TYPE B	TON	105
40600100	BITUMINOUS MATERIALS (PRIME COAT)	GALLON	3,770
40600300	AGGREGATE (PRIME COAT)	TON	78
40600735	POLYMERIZED LEVELING BINDER (HAND METHOD), N70	TON	15
40600837	POLYMERIZED LEVELING BINDER (MACHINE METHOD), N70	TON	3,695
40600895	CONSTRUCTING TEST STRIP	EACH	2
40600982	HOT-MIX ASPHALT SURFACE REMOVAL - BUTT JOINT	SQ YD	1,967
40600985	PORTLAND CEMENT CONCRETE SURFACE REMOVAL - BUTT JOINT	SQ YD	898
40600990	TEMPORARY RAMP	SQ YD	308
40603515	POLYMERIZED HOT-MIX ASPHALT SURFACE COURSE, MIX "C", N70	TON	2,585
40603540	POLYMERIZED HOT-MIX ASPHALT SURFACE COURSE, MIX "D", N70	TON	650
40800050	INCIDENTAL HOT-MIX ASPHALT SURFACING	TON	925
48101800	AGGREGATE SHOULDERS (SPECIAL)	SQ YD	7,942
60265700	VALVE VAULTS TO BE ADJUSTED	EACH	4
67100100	MOBILIZATION	L SUM	1
70103700	TRAFFIC CONTROL COMPLETE	L SUM	1
70300100	SHORT-TERM PAVEMENT MARKING	FOOT	2,800
70300210	TEMPORARY PAVEMENT MARKING - LETTERS AND SYMBOLS	SQ FT	309.6
70300230	TEMPORARY PAVEMENT MARKING - LINE 5"	FOOT	35,890
70300240	TEMPORARY PAVEMENT MARKING - LINE 6"	FOOT	300
70300280	TEMPORARY PAVEMENT MARKING - LINE 24"	FOOT	285
70301000	WORK ZONE PAVEMENT MARKING REMOVAL	SQ FT	19,000
Δ 78000100	THERMOPLASTIC PAVEMENT MARKING - LETTERS AND SYMBOLS	SQ FT	309.6
Δ 78000650	THERMOPLASTIC PAVEMENT MARKING - LINE 24"	FOOT	285
Δ 78001120	PAINT PAVEMENT MARKING - LINE 5"	FOOT	35,890
Δ 78001130	PAINT PAVEMENT MARKING - LINE 6"	FOOT	300
Δ 78300200	RAISED REFLECTIVE PAVEMENT MARKER REMOVAL	EACH	190
• Z0048665	RAILROAD PROTECTIVE LIABILITY INSURANCE	L SUM	1

• SPECIAL PROVISION
 Δ SPECIALTY ITEMS
 CONSTRUCTION TYPE CODE : 1000





- (*) STA. 1100+00 TO STA. 1103+60 = VARIES 40.00' TO 52.00'
- STA. 1103+60 TO STA. 1116+40 = 52.00'
- STA. 1116+40 TO STA. 1120+00 = VARIES 52.00' TO 40.00'
- (**) STA. 1100+00 TO STA. 1103+60 = VARIES 24.00' TO 36.00'
- STA. 1103+60 TO STA. 1116+40 = 36.00'
- STA. 1116+40 TO STA. 1120+00 = VARIES 36.00' TO 24.00'
- (***) STA. 1100+00 TO STA. 1103+60 = VARIES 12.00' TO 18.00'
- STA. 1103+60 TO STA. 1116+40 = 18.00'
- STA. 1116+40 TO STA. 1120+00 = VARIES 18.00' TO 12.00'
- (****) STA. 1100+00 TO STA. 1103+60 = VARIES 0.00' TO 12.00'
- STA. 1103+60 TO STA. 1116+40 = 12.00'
- STA. 1116+40 TO STA. 1120+00 = VARIES 12.00' TO 0.00'



PAVEMENT DESIGN DATA

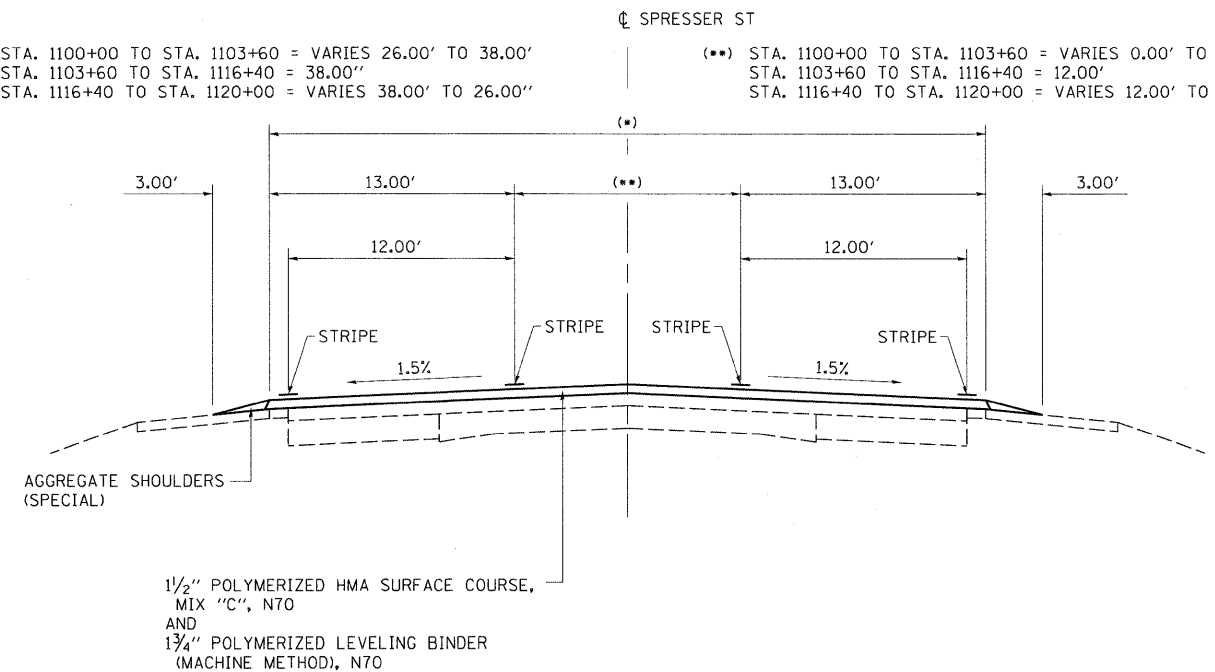
CLASS II ROADWAY
 DESIGN PERIOD : 15 YEARS
 STRUCTURAL DESIGN TRAFFIC (SDT):
 YEAR = 2018
 PV = 5948 (88%)
 SU = 541 (8%)
 MU = 270 (4%)
 TRAFFIC FACTOR (TF) = 1.7060
 MINIMUM SOIL SUPPORT : $E_{RI} = 3$

STRUCTURAL NUMBER (REQ) = 3.31
 STRUCTURAL NUMBER (PROV) = 3.41

PAVEMENT PROVIDED:

- 1 1/2" POLYMERIZED HMA SURFACE COURSE, MIX "C", N70
- 1 3/4" POLYMERIZED LEVELING BINDER (MACHINE METHOD), N70
- 1 1/2" POLYMERIZED HMA SURFACE COURSE, MIX "D", N70
- 1 3/4" POLYMERIZED LEVELING BINDER (MACHINE METHOD), N70

- (*) STA. 1100+00 TO STA. 1103+60 = VARIES 26.00' TO 38.00'
- STA. 1103+60 TO STA. 1116+40 = 38.00'
- STA. 1116+40 TO STA. 1120+00 = VARIES 38.00' TO 26.00'
- (**) STA. 1100+00 TO STA. 1103+60 = VARIES 0.00' TO 12.00'
- STA. 1103+60 TO STA. 1116+40 = 12.00'
- STA. 1116+40 TO STA. 1120+00 = VARIES 12.00' TO 0.00'



FILE NAME = J:\09022.07\CADD\CAD\sheets\0902287-sh1.dgn	USER NAME = franky	DESIGNED - WCB	REVISED -
PLOT SCALE = 50.0000' / 1" IN.	PLOT DATE = 11/19/2009	CHECKED - WCB	REVISED -
G&B PROJECT: 09002.07	PLOT DRIVER = vbi_tds700_ps_local_idot.pltcf	DATE - 9/24/09	REVISED -

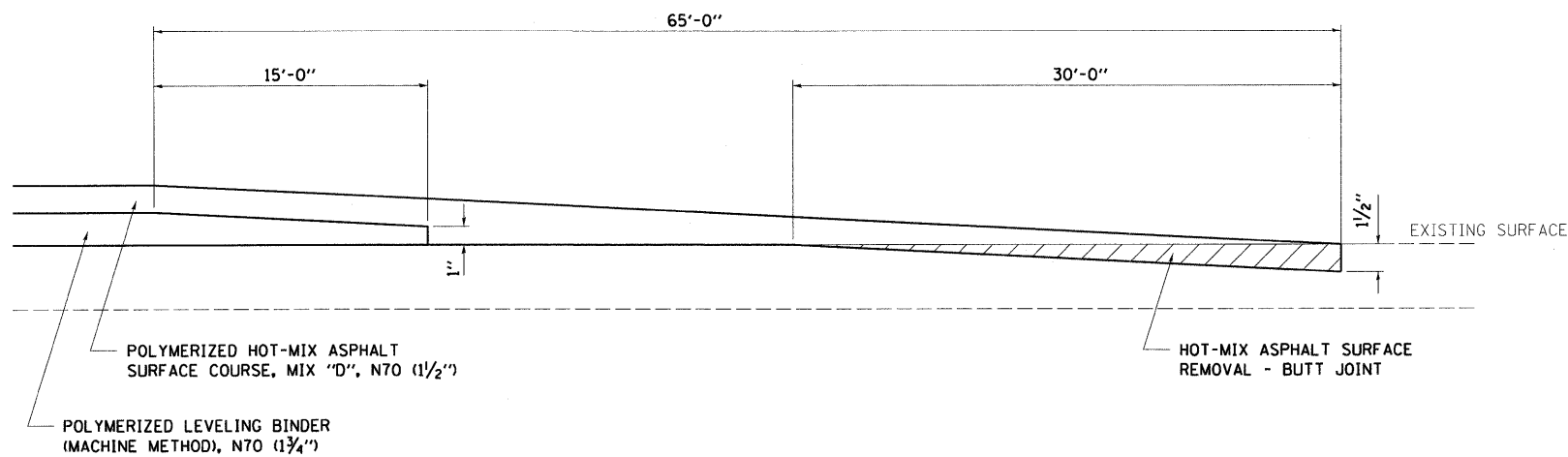
**CITY OF TAYLORVILLE
 SPRESSER STREET IMPROVEMENTS**

TYPICAL SECTIONS

SCALE: SHEET NO. 1 OF 1 SHEETS STA. TO STA.

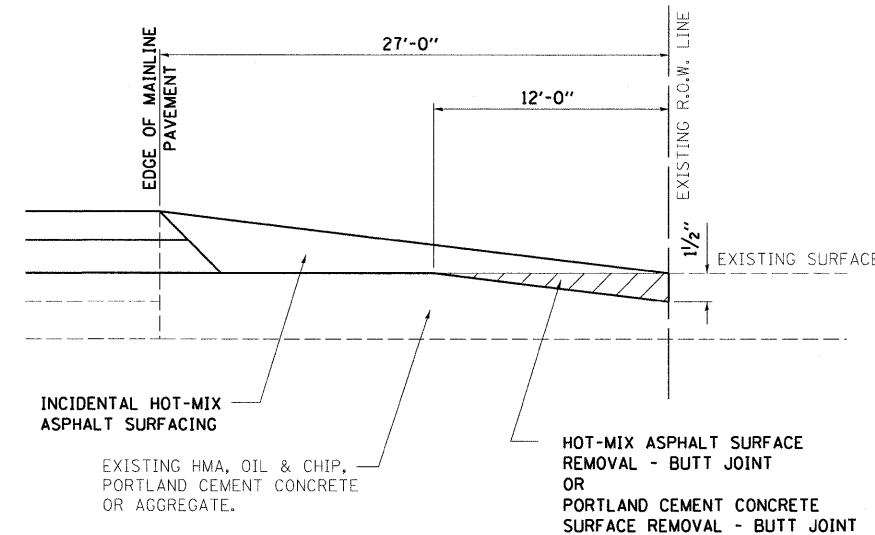
F.A.U. RTE.	SECTION	COUNTY	TOTAL SHEETS	SHEET NO.
7877	09-00060-00-RS	CHRISTIAN	14	3
CONTRACT NO. 93512				





MAINLINE BUTT JOINT DETAIL

STA. 1042+52.00 TO STA. 1042+82.00 (MIX "C")
 STA. 1161+35.00 TO STA. 1161+65.00 (MIX "D")

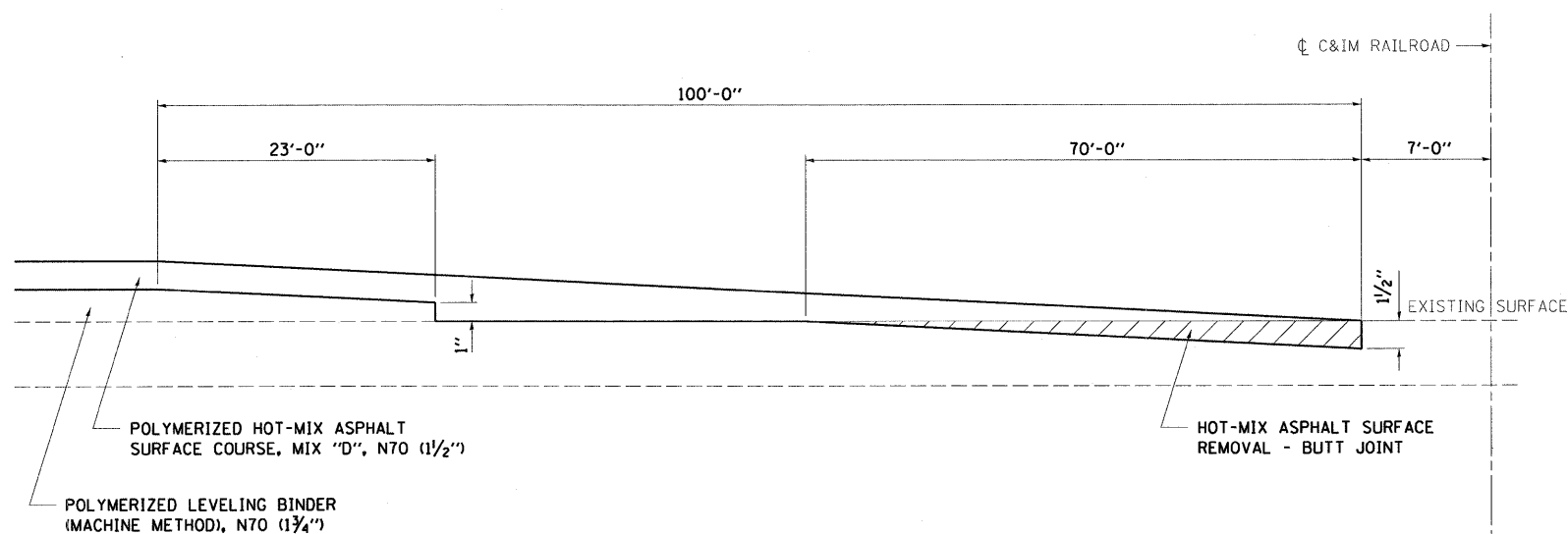


SIDE ROAD AND ENTRANCE BUTT JOINT DETAIL

SEE PLANS FOR LOCATIONS
 AND ENTRANCE TYPES

NOTE: REMOVAL OF OIL & CHIP SURFACE PAID FOR AS
 HOT-MIX ASPHALT SURFACE REMOVAL - BUTT JOINT.

 REMOVAL OF AGGREGATE SURFACE NECESSARY TO
 MAINTAIN 1/2" MINIMUM HMA THICKNESS SHALL BE
 INCLUDED IN THE COST OF INCIDENTAL HOT-MIX
 ASPHALT SURFACING.



MAINLINE BUTT JOINT DETAIL AT RAILROAD

STA. 1147+08.00 TO STA. 1147+78.00
 STA. 1147+92.00 TO STA. 1148+62+00

(NOTE: BUTT JOINT IS SYMMETRICAL ABOUT C RAILROAD)



FILE NAME = J:\09002.07\CADD\CADsheets\0900207-shd-details.dgn	USER NAME = frankv	DESIGNED - WCB	REVISED -
PLOT SCALE = 50.0000' / 1" / in.	CHECKED - WCB	DRAWN - MDS	REVISED -
PLOT DATE = 11/19/2009	DATE - 9/24/09		REVISED -

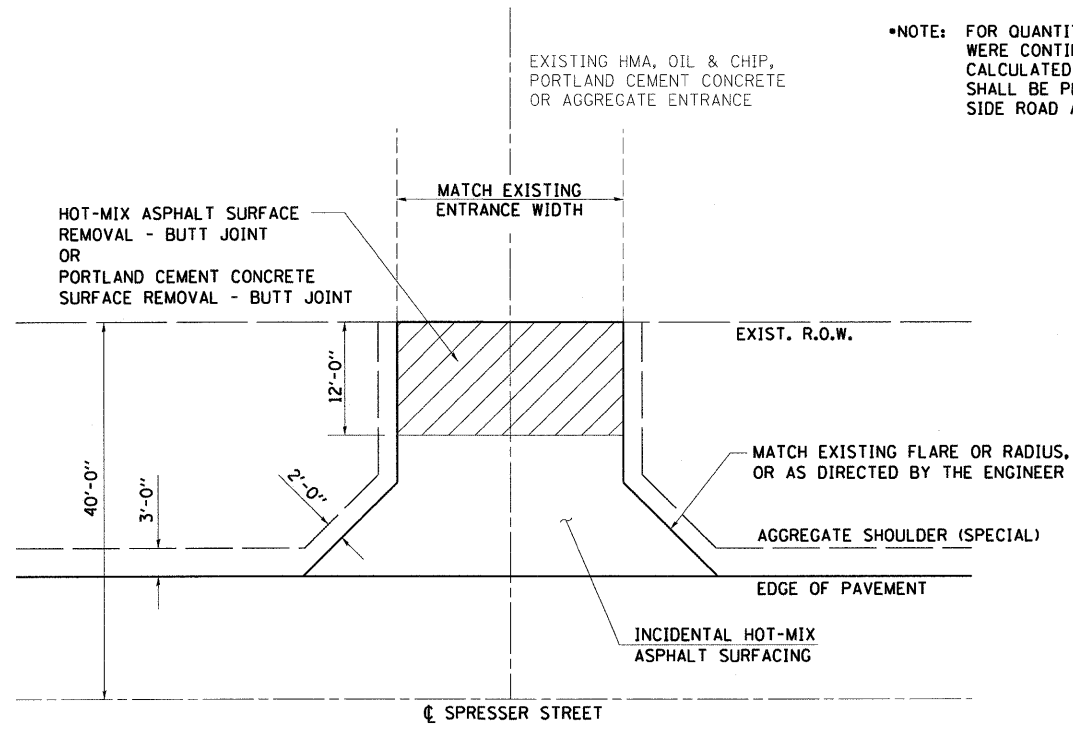
**CITY OF TAYLORVILLE
 SPRESSER STREET IMPROVEMENTS**

DETAILS

SCALE: SHEET NO. 1 OF 1 SHEETS STA. TO STA.

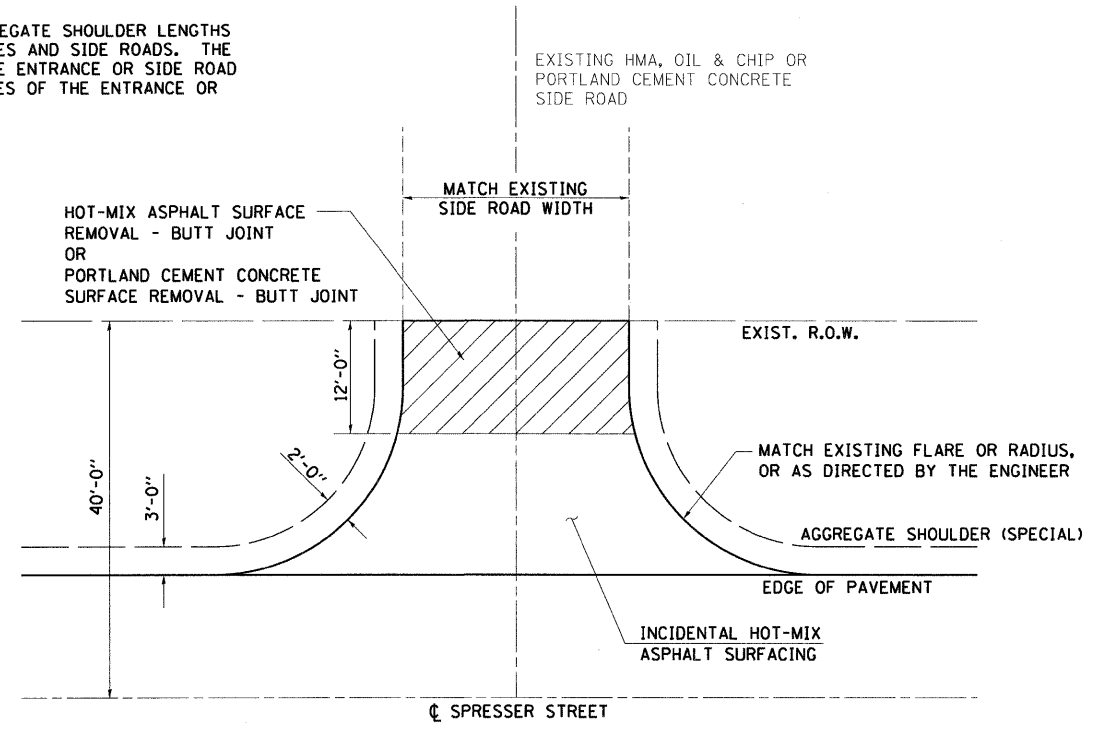
F.A.U. RTE.	SECTION	COUNTY	TOTAL SHEETS	SHEET NO.
7877	09-00060-00-RS	CHRISTIAN	14	4
CONTRACT NO. 93512				
FED. ROAD DIST. NO. ILLINOIS FED. AID PROJECT ARA-M-50670171				

•NOTE: FOR QUANTITY CALCULATIONS, AGGREGATE SHOULDER LENGTHS WERE CONTINUED THROUGH ENTRANCES AND SIDE ROADS. THE CALCULATED QUANTITY THROUGH THE ENTRANCE OR SIDE ROAD SHALL BE PLACED AROUND THE EDGES OF THE ENTRANCE OR SIDE ROAD AS SHOWN.



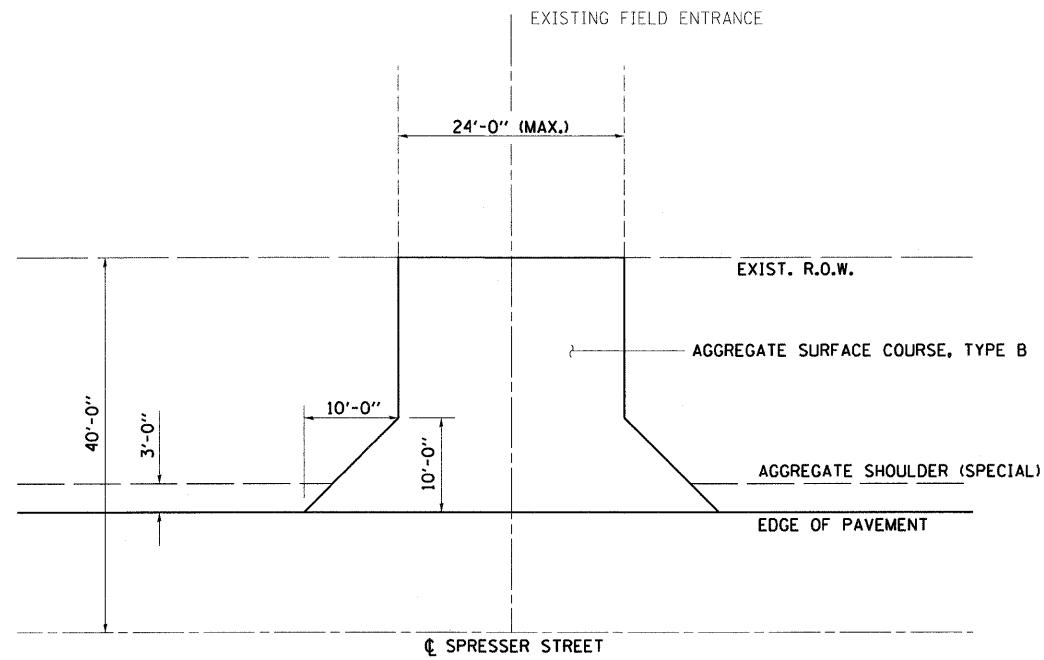
COMMERCIAL AND PRIVATE ENTRANCE DETAIL

SEE PLANS FOR LOCATIONS AND SURFACE TYPES



SIDE ROAD DETAIL

SEE PLANS FOR LOCATIONS AND SURFACE TYPES



FIELD ENTRANCE DETAIL

SEE PLANS FOR LOCATIONS

GREENE & BRADFORD, INC.
OF SPRINGFIELD
REGISTERED PROFESSIONAL ENGINEERS
ILLINOIS LICENSE NO. 021-00000001
REGISTERED PROFESSIONAL SURVEYORS
ILLINOIS LICENSE NO. 021-00000001

FILE NAME =	USER NAME = frankv	DESIGNED - WCB	REVISED -
J:\09022.07\CADD\CADsheets\09002207-shd	details.dgn	DRAWN - MDS	REVISED -
	PLOT SCALE = 50.0000' / 1"	CHECKED - WCB	REVISED -
	PLOT DATE = 11/19/2009	DATE - 9/24/09	REVISED -

**CITY OF TAYLORVILLE
SPRESSER STREET IMPROVEMENTS**

DETAILS

SCALE: SHEET NO. 1 OF 1 SHEETS STA. TO STA.

F.A.U. RTE.	SECTION	COUNTY	TOTAL SHEETS	SHEET NO.
7877	09-00060-00-RS	CHRISTIAN	14	5
FED. ROAD DIST. NO.			ILLINOIS FED. AID PROJECT ARA-M-50670171	

CONTRACT NO. 093512

PAVING SCHEDULE

LOCATION	HOT-MIX ASPHALT SURFACE REMOVAL - BUTT JOINT (SQ YD)	PORTLAND CEMENT CONCRETE SURFACE REMOVAL - BUTT JOINT (SQ YD)	RAISED REFLECTIVE PAVEMENT MARKER REMOVAL (EACH)	AGGREGATE SURFACE COURSE, TYPE B (TON)	BITUMINOUS MATERIALS (PRIME COAT) (GALLON)	AGGREGATE (PRIME COAT) (TON)	POLYMERIZED LEVELING BINDER (MACHINE METHOD), N70 (TON)	POLYMERIZED HOT-MIX ASPHALT SURFACE COURSE, MIX "C", N70 (TON)	POLYMERIZED HOT-MIX ASPHALT SURFACE COURSE, MIX "D", N70 (TON)	INCIDENTAL HOT-MIX ASPHALT SURFACING (TON)	TEMPORARY RAMP (SQ YD)	AGGREGATE SHOULDERS (SPECIAL) (SQ YD)
MAINLINE SPRESSER STREET												
STA. 1042+52 TO STA. 1042+57											15	
STA. 1042+52 TO STA. 1042+82	87											
STA. 1042+52 TO STA. 1100+00					1,329	33.2	1,653	1,402				3,832
STA. 1042+52 TO STA. 1100+96			55									
STA. 1100+00 TO STA. 1103+60					103	2.6	127	108				240
STA. 1100+96 TO STA. 1113+36			69									
STA. 1103+60 TO STA. 1116+40					433	10.8	536	456				853
STA. 1114+56 TO STA. 1118+96			26									
STA. 1116+40 TO STA. 1120+00					103	2.6	127	108				240
STA. 1118+96 TO STA. 1161+65			40									
STA. 1120+00 TO STA. 1135+00					347	8.7	431	366				1,000
STA. 1135+00 TO STA. 1161+65					616	15.4	767		650			1,777
STA. 1147+08 TO STA. 1147+78	202											
STA. 1147+73 TO STA. 1147+78											15	
STA. 1147+92 TO STA. 1147+97											15	
STA. 1147+92 TO STA. 1148+62	202											
STA. 1161+35 TO STA. 1161+65	87											
STA. 1161+60 TO STA. 1161+65											15	
MAINLINE TOTAL	578	0	190	0	2,931	73.3	3,641	2,440	650	0	60	7,942
SIDE ROADS												
STA. 1042+80 RT (SANGAMON ROAD)	81				10	0.2	1	11			14	
STA. 1059+48 RT (CLEARING AVE.)	71				18	0.4	7	19			31	
STA. 1074+30 RT (AIRLAWN STREET)		40			10	0.2	4	10			17	
STA. 1103+30 RT (LEE NORSE DRIVE)		114			21	0.5	10	22			43	
STA. 1113+85 LT (CH 16)	108				19	0.5	9	20			41	
STA. 1113+85 RT (VANDEVEER STREET)	110				19	0.5	9	20			40	
STA. 1135+86 LT (BRIARCLIFF ROAD)	66				16	0.4	7	17			25	
STA. 1145+55 RT (BAUGHMAN ROAD)	54				13	0.3	6	14			21	
STA. 1161+35 LT (WEST AVE.)	87				11	0.3	1	11			16	
SIDE ROAD TOTAL	577	154	0	0	137	3.3	54	144	0		248	
ENTRANCES												
STA. 1042+84 LT (FE)				15								
STA. 1043+97 RT (CE)	38				10					13		
STA. 1048+41 RT (CE)	46				12					16		
STA. 1052+13 LT (CE)		40			11					14		
STA. 1052+34 RT (CE)		64			20					27		
STA. 1053+54 LT (CE)	28				9					12		
STA. 1057+65 LT (CE + MB)		30			11					15		
STA. 1062+53 RT (FE)				15								
STA. 1062+97 LT (CE)					17					22		
STA. 1064+11 LT (CE + MB)					13					17		
STA. 1068+08 LT (CE + MB)	34				12					15		
STA. 1068+89 RT (CE)		29			10					13		
STA. 1070+17 RT (CE + MB)		38			20					26		
STA. 1073+04 RT (CE)		31			10					14		
STA. 1073+90 LT (CE)	33				10					14		
STA. 1081+90 LT (CE)	36				10					12		
STA. 1084+50 LT (CE + MB)	52				17					22		
STA. 1085+00 RT (CE + MB)		49			18					23		
STA. 1085+40 LT (CE)				15								
STA. 1089+53 LT (FE)				15								
STA. 1097+02 RT (CE + MB)		40			13					18		
STA. 1100+36 RT (CE + MB)		47			15					19		
STA. 1100+58 LT (PE + MB)					9					12		
STA. 1107+81 RT (CE)	67				13					17		
STA. 1115+16 RT (CE + MB)		32			9					12		
STA. 1116+20 RT (CE)		50			10					14		
STA. 1116+71 RT (CE)		61			13					16		
STA. 1117+73 RT (CE)		31			9					11		
STA. 1119+09 RT (CE)					13					17		
STA. 1120+97 RT (CE)					14					18		
STA. 1122+52 RT (CE + MB)	18	34			16					21		
STA. 1124+14 RT (CE)	46				13					17		
STA. 1124+84 RT (CE)					13					17		
STA. 1126+20 LT (FE)				15								
STA. 1126+13 RT (CE + MB)					16					21		
STA. 1127+45 RT (CE)					13					16		
STA. 1128+83 RT (CE + MB)	31				11					15		
STA. 1129+43 RT (CE)	30				10					12		



FILE NAME = J:\09002.07\CADD\CAD\sheet\09002027-shi-	USER NAME = frankv	DESIGNED - WCB	REVISED -
chedule.dgn		DRAWN - MOS	REVISED -
PLOT SCALE = 50.0000' / in.		CHECKED - WCB	REVISED -
PLOT DATE = 11/19/2009		DATE - 9/28/09	REVISED -

**CITY OF TAYLORVILLE
SPRESSER STREET IMPROVEMENTS**

SCHEDULE OF QUANTITIES			
SCALE:	SHEET NO. 1 OF 3 SHEETS	STA.	TO STA.

F.A.U. RTE.	SECTION	COUNTY	TOTAL SHEETS	SHEET NO.
7877	09-00060-00-RS	CHRISTIAN	14	6
CONTRACT NO. 090512				
FED. ROAD DIST. NO. ILLINOIS FED. AID PROJECT ARA-M-50670171				

PAVING SCHEDULE

LOCATION	HOT-MIX ASPHALT SURFACE REMOVAL - BUTT JOINT (SQ YD)	PORTLAND CEMENT CONCRETE SURFACE REMOVAL - BUTT JOINT (SQ YD)	RAISED REFLECTIVE PAVEMENT MARKER REMOVAL (EACH)	AGGREGATE SURFACE COURSE, TYPE B (TON)	BITUMINOUS MATERIALS (PRIME COAT) (GALLON)	AGGREGATE (PRIME COAT) (TON)	POLYMERIZED LEVELING BINDER (MACHINE METHOD), N70 (TON)	POLYMERIZED HOT-MIX ASPHALT SURFACE COURSE, MIX "C", N70 (TON)	POLYMERIZED HOT-MIX ASPHALT SURFACE COURSE, MIX "D", N70 (TON)	INCIDENTAL HOT-MIX ASPHALT SURFACING (TON)	TEMPORARY RAMP (SQ YD)	AGGREGATE SHOULDERS (SPECIAL) (SQ YD)
STA. 1130+65 RT (CE)					14					18		
STA. 1133+19 RT (CE)					14					18		
STA. 1134+01 LT (PE)					13					18		
STA. 1135+76 RT (CE)					11					15		
STA. 1137+86 LT (CE)	47				13					18		
STA. 1138+57 LT (CE)	47				13					18		
STA. 1138+84 RT (CE)	51				13					17		
STA. 1139+84 RT (CE)					13					18		
STA. 1139+91 LT (CE)					13					18		
STA. 1141+02 RT (CE)					29					39		
STA. 1141+99 LT (CE)					13					18		
STA. 1142+97 RT (CE)					22					29		
STA. 1143+35 LT (FE)				15								
STA. 1147+11 RT (CE)		30			9					12		
STA. 1149+10 RT (FE)				15								
STA. 1151+79 LT (CE)	31				10					12		
STA. 1152+11 LT (CE)	32				10					12		
STA. 1152+67 LT (CE + MB)		48			14					19		
STA. 1153+73 LT (CE)	52				13					17		
STA. 1157+87 LT (CE)	47				12					16		
STA. 1160+12 LT (CE)	46				13					17		
STA. 1161+07 RT (CE)		90			20					27		
ENTRANCE TOTAL	812	744	0	105	702	0.0	0	0	0	924	0	0
TOTALS	1,967	898	190	105	3,770	76.6	3,695	2,584	650	924	308	7,942
USE	1,967	898	190	105	3,770	78.0	3,695	2,585	650	925	308	7,942

*** ALTERNATE 1: AREA REFLECTIVE CRACK CONTROL TREATMENT
ALTERNATE 2: AREA REFLECTIVE CRACK CONTROL TREATMENT (SPECIAL)

UTILITY ADJUSTMENT SCHEDULE

LOCATION & TYPE	TYPE	VALVE VAULTS TO BE ADJUSTED (EACH)
STA. 1116+43, 29' RT	WATER VALVE	1
STA. 1135+60, 21' RT	WATER VALVE	1
STA. 1145+36, 19' RT	WATER VALVE	1
STA. 1161+24, 20' LT	WATER VALVE	1
TOTALS		4

GREENE & BRAUFORD, INC.
OF SPRINGFIELD
REGISTERED PROFESSIONAL ENGINEERS
ILLINOIS LICENSE NO. 021-000001
REGISTERED PROFESSIONAL SURVEYORS
ILLINOIS LICENSE NO. 021-000001
REGISTERED PROFESSIONAL LAND SURVEYORS
ILLINOIS LICENSE NO. 021-000001
REGISTERED PROFESSIONAL CIVIL ENGINEERS
ILLINOIS LICENSE NO. 021-000001
REGISTERED PROFESSIONAL ELECTRICAL ENGINEERS
ILLINOIS LICENSE NO. 021-000001
REGISTERED PROFESSIONAL MECHANICAL ENGINEERS
ILLINOIS LICENSE NO. 021-000001
REGISTERED PROFESSIONAL CHEMICAL ENGINEERS
ILLINOIS LICENSE NO. 021-000001
REGISTERED PROFESSIONAL INDUSTRIAL ENGINEERS
ILLINOIS LICENSE NO. 021-000001
REGISTERED PROFESSIONAL AERONAUTICAL ENGINEERS
ILLINOIS LICENSE NO. 021-000001
REGISTERED PROFESSIONAL METALLURGICAL ENGINEERS
ILLINOIS LICENSE NO. 021-000001
REGISTERED PROFESSIONAL NUCLEAR ENGINEERS
ILLINOIS LICENSE NO. 021-000001
REGISTERED PROFESSIONAL AGRICULTURAL ENGINEERS
ILLINOIS LICENSE NO. 021-000001
REGISTERED PROFESSIONAL ENVIRONMENTAL ENGINEERS
ILLINOIS LICENSE NO. 021-000001
REGISTERED PROFESSIONAL FOOD ENGINEERS
ILLINOIS LICENSE NO. 021-000001
REGISTERED PROFESSIONAL SANITARY ENGINEERS
ILLINOIS LICENSE NO. 021-000001
REGISTERED PROFESSIONAL TRANSPORTATION ENGINEERS
ILLINOIS LICENSE NO. 021-000001
REGISTERED PROFESSIONAL PETROLEUM ENGINEERS
ILLINOIS LICENSE NO. 021-000001
REGISTERED PROFESSIONAL AERONAUTICAL ENGINEERS
ILLINOIS LICENSE NO. 021-000001
REGISTERED PROFESSIONAL METALLURGICAL ENGINEERS
ILLINOIS LICENSE NO. 021-000001
REGISTERED PROFESSIONAL NUCLEAR ENGINEERS
ILLINOIS LICENSE NO. 021-000001
REGISTERED PROFESSIONAL AGRICULTURAL ENGINEERS
ILLINOIS LICENSE NO. 021-000001
REGISTERED PROFESSIONAL ENVIRONMENTAL ENGINEERS
ILLINOIS LICENSE NO. 021-000001
REGISTERED PROFESSIONAL FOOD ENGINEERS
ILLINOIS LICENSE NO. 021-000001
REGISTERED PROFESSIONAL SANITARY ENGINEERS
ILLINOIS LICENSE NO. 021-000001
REGISTERED PROFESSIONAL TRANSPORTATION ENGINEERS
ILLINOIS LICENSE NO. 021-000001
REGISTERED PROFESSIONAL PETROLEUM ENGINEERS
ILLINOIS LICENSE NO. 021-000001



FILE NAME = J:\09022.07\CADD\CAD\sheets\09002207-sht-schedule.dgn	USER NAME = Frankv	DESIGNED - WCB	REVISED -	CITY OF TAYLORVILLE SPRESSER STREET IMPROVEMENTS	SCHEDULE OF QUANTITIES	F.A.U. RTE. 7877	SECTION 09-00060-00-RS	COUNTY CHRISTIAN	TOTAL SHEETS 14	SHEET NO. 7	
G&B PROJECT: 09002.07	PLOT SCALE = 50.0000' / 1" =	CHECKED - WCB	REVISED -			SCALE:	SHEET NO. 2 OF 3 SHEETS	STA.	TO STA.	FED. ROAD DIST. NO.	ILLINOIS FED. AID PROJECT ARA-M-5067(017)
PLOT DRIVER = V81.TDS700.PS.LOCAL.IDOT.pltcf	PLOT DATE = 11/19/2009	DATE - 9/28/09	REVISED -			CONTRACT NO. 93512					

PAVEMENT MARKING SCHEDULE

LOCATION	SHORT-TERM PAVEMENT MARKING (FOOT)	TEMPORARY PAVEMENT MARKING LETTERS & SYMBOLS (SQ FT)	TEMPORARY PAVEMENT MARKING LINE 5" (FOOT)	TEMPORARY PAVEMENT MARKING LINE 6" (FOOT)	TEMPORARY PAVEMENT MARKING LINE 24" (FOOT)	THERMOPLASTIC PAVEMENT MARKING LETTERS & SYMBOLS (SQ FT)	PAINT PAVEMENT MARKING LINE 5" (FOOT)	PAINT PAVEMENT MARKING LINE 6" (FOOT)	THERMOPLASTIC PAVEMENT MARKING LINE 24" (FOOT)
STA. 1042+52, CL TO STA. 1100+00, CL (SKIP DASH - YELLOW)	1,152		1,440				1,440		
STA. 1042+52, 12' LT TO STA. 1112+92, 18' LT (SINGLE SOLID - WHITE)			7,040				7,040		
STA. 1042+80, 32' RT (SANGAMON ROAD - STOP BAR)					15				15
STA. 1043+24, 12' RT TO STA. 1058+99, 12' RT (SINGLE SOLID - WHITE)			1,575				1,575		
STA. 1059+96, 12' RT TO STA. 1074+00, 12' RT (SINGLE SOLID - WHITE)			1,404				1,404		
STA. 1074+60, 12' RT TO STA. 1102+43, 16' RT (SINGLE SOLID - WHITE)			2,783				2,783		
STA. 1059+48, 35' RT (CLEARING AVE - STOP BAR)					30				30
STA. 1074+30, 33' RT (AIRLAWN STREET - STOP BAR)					15				15
STA. 1100+00, CL TO STA. 1103+00, 5' LT (DOUBLE SOLID - YELLOW)			600				600		
STA. 1100+00, CL TO STA. 1103+00, 5' RT (DOUBLE SOLID - YELLOW)			600				600		
STA. 1100+00 TO STA. 1120+00 (TURN LANES)	800								
STA. 1103+23, 52' RT (LEE NORSE DRIVE - STOP BAR)					20				20
STA. 1103+65, 6' LT TO STA. 1104+65, 6' LT (SINGLE SOLID - WHITE)				100				100	
STA. 1103+65, 6' RT TO STA. 1105+25, 6' RT (DOUBLE SOLID - YELLOW)			320				320		
STA. 1103+90 (LEFT TURN ARROW)		15.6				15.6			
STA. 1104+06, 18' RT TO STA. 1113+13, 18' RT (SINLGE SOLID - WHITE)			907				907		
STA. 1104+60 (LEFT TURN ARROW)		15.6				15.6			
STA. 1104+65, 6' RT TO STA. 1105+25, 6' LT (DOUBLE SOLID - YELLOW)			120				120		
STA. 1105+25, 6' LT TO STA. 1111+68, 6' LT (SINGLE SOLID - YELLOW)			643				643		
STA. 1105+25, 6' LT TO STA. 1111+68, 6' LT (SKIP DASH - YELLOW)			160				160		
STA. 1105+25, 6' RT TO STA. 1111+68, 6' RT (SKIP DASH - YELLOW)			160				160		
STA. 1105+25, 6' RT TO STA. 1111+68, 6' RT (SINGLE SOLID - YELLOW)			643				643		
STA. 1105+31 (LEFT TURN ARROW)		15.6				15.6			
STA. 1105+63 (LEFT TURN ARROW)		15.6				15.6			
STA. 1108+31 (LEFT TURN ARROW)		15.6				15.6			
STA. 1108+63 (LEFT TURN ARROW)		15.6				15.6			
STA. 1111+31 (LEFT TURN ARROW)		15.6				15.6			
STA. 1111+68, 6' LT TO STA. 1113+32, 6' LT (DOUBLE SOLID - YELLOW)			328				328		
STA. 1111+68, 6' LT TO STA. 1112+32, 6' LT (DOUBLE SOLID - YELLOW)			128				128		
STA. 1111+63 (LEFT TURN ARROW)		15.6				15.6			
STA. 1112+32, 6' RT TO STA. 1113+32, 6' RT (SINGLE SOLID - WHITE)				100				100	
STA. 1112+37 (LEFT TURN ARROW)		15.6				15.6			
STA. 1113+07 (LEFT TURN ARROW)		15.6				15.6			
STA. 1113+85, 40' LT (CH 16 - STOP BAR)					32				32
STA. 1113+85, 40' RT (VANDEVEER STREET - STOP BAR)					34				34
STA. 1114+40, 6' LT TO STA. 1115+40, 6' LT (SINGLE SOLID - WHITE)				100				100	
STA. 1114+40, 6' RT TO STA. 1120+00, CL (DOUBLE SOLID - YELLOW)			1,120				1,120		
STA. 1114+61, 18' LT TO STA. 1135+22, 12' LT (SINGLE SOLID - WHITE)			2,061				2,061		
STA. 1114+61, 18' RT TO STA. 1145+11, 12' RT (SINGLE SOLID - WHITE)			3,050				3,050		
STA. 1114+60 (LEFT TURN ARROW)		15.6				15.6			
STA. 1115+35 (LEFT TURN ARROW)		15.6				15.6			
STA. 1115+40, 6' RT TO STA. 1116+00, 6' LT (DOUBLE SOLID - YELLOW)			60				60		
STA. 1116+00, 6' LT TO STA. 1120+00, CL (DOUBLE SOLID - YELLOW)			800				800		
STA. 1120+00, CL TO STA. 1148+00, CL (DOUBLE SOLID - YELLOW)			5,600				5,600		
STA. 1120+00, CL TO STA. 1161+65, CL (YELLOW - SKIP DASH)	832								
STA. 1135+86, 30' LT (BRIARCLIFF ROAD - STOP BAR)					28				28
STA. 1136+46, 12' LT TO STA. 1161+00, 12' LT (SINGLE SOLID - WHITE)			2,454				2,454		
STA. 1144+33, RT LANE (RR CROSSING SYMBOL)					12				12
STA. 1144+58, RT LANE (RR CROSSING SYMBOL)		61.2				61.2			
STA. 1144+83, RT LANE (RR CROSSING SYMBOL)					12				12
STA. 1145+55, 30' RT (BAUGHMAN ROAD - STOP BAR)					22				22
STA. 1146+13, 12' RT TO STA. 1161+65, 12' RT (SINGLE SOLID - WHITE)			1,552				1,552		
STA. 1147+65, RT LANE (RR CROSSING - STOP BAR)					12				12
STA. 1148+00, CL TO STA. 1161+65, CL (SKIP DASH - YELLOW)			340				340		
STA. 1148+05, LT LANE (RR CROSSING - STOP BAR)					12				12
STA. 1151+02, LT LANE (RR CROSSING SYMBOL)					12				12
STA. 1151+27, LT LANE (RR CROSSING SYMBOL)		61.2				61.2			
STA. 1151+52, LT LANE (RR CROSSING SYMBOL)					12				12
STA. 1161+35, 30' LT (WEST AVE - STOP BAR)					17				17
TOTALS	2,784	309.6	35,888	300	285	309.6	35,888	300	285
USE	2,800	309.6	35,890	300	285	309.6	35,890	300	285



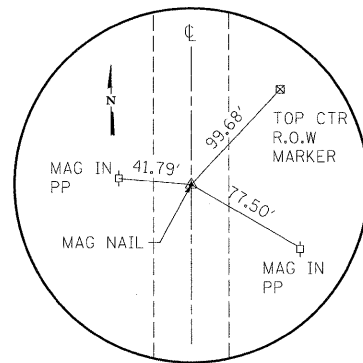
FILE NAME = J:\090202\07\CADD\CAD\Sheets\09020207-sht-schedule.dgn
 USER NAME = frankv
 DESIGNED - WCB
 DRAWN - MDS
 CHECKED - WCB
 DATE - 9/28/09
 PLOT SCALE = 50.0000 / 1"=100'
 PLOT DATE = 11/19/2009
 PLOT DRIVER = V8i.T05700.PS.LOCAL.IDOT.pltcf9

**CITY OF TAYLORVILLE
SPRESSER STREET IMPROVEMENTS**

SCHEDULE OF QUANTITIES

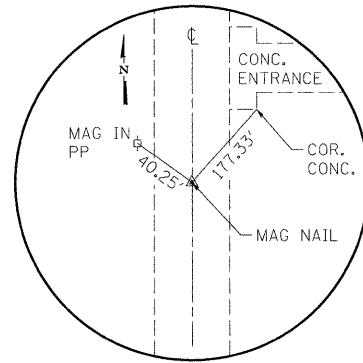
SCALE: SHEET NO. 3 OF 3 SHEETS STA. TO STA.

F.A.U. RTE.	SECTION	COUNTY	TOTAL SHEETS	SHEET NO.
7877	09-00060-00-RS	CHRISTIAN	14	8
FED. ROAD DIST. NO. ILLINOIS			FED. AID PROJECT ARA-M-50670171	
CONTRACT NO. 93512				



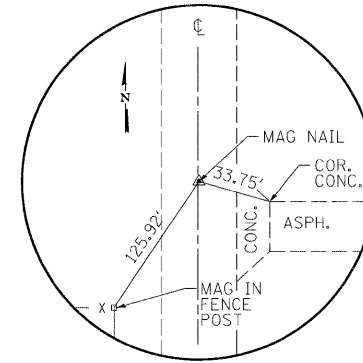
**P.O.T. STA. 1042+50.00
MAG NAIL**

N - 1,042,357.2106
E - 2,534,011.9226



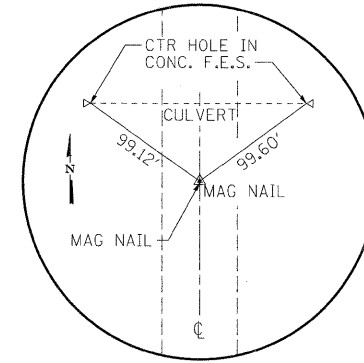
**P.O.T. STA. 1050+00.00
MAG NAIL**

N - 1,043,107.0337
E - 2,533,995.6356



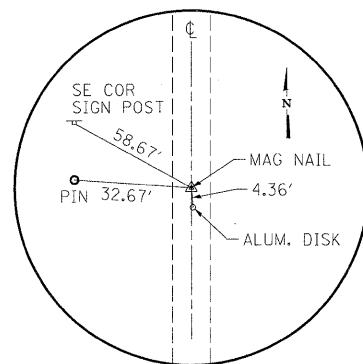
**P.O.T. STA. 1060+00.00
MAG NAIL**

N - 1,044,106.7979
E - 2,533,973.9197



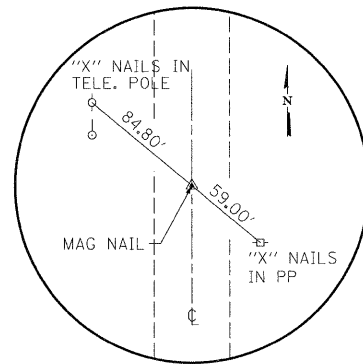
**P.O.T. STA. 1075+00.00
MAG NAIL**

N - 1,045,606.4442
E - 2,533,941.3458



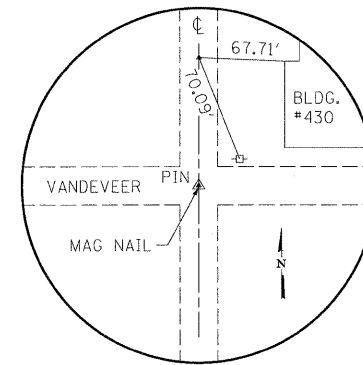
**P.O.T. STA. 1087+50.00
MAG NAIL**

N - 1,046,856.1494
E - 2,533,914.2009



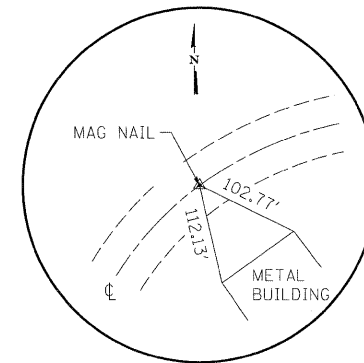
**P.I. STA. 1100+00.74
MAG NAIL**

N - 1,048,106.5900
E - 2,533,887.0400



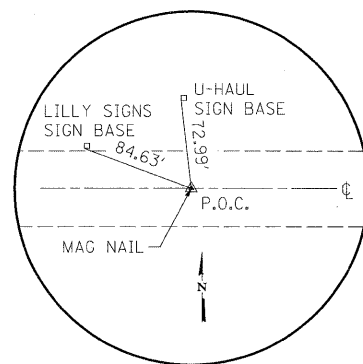
**P.O.T. STA. 1115+00.00
MAG NAIL**

N - 1,049,605.4428
E - 2,533,852.0987



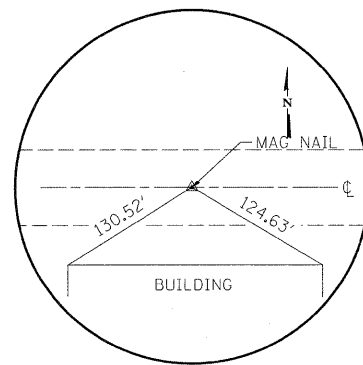
**P.O.C. STA. 1135+00.00
MAG NAIL**

N - 1,051,575.6669
E - 2,533,982.4148



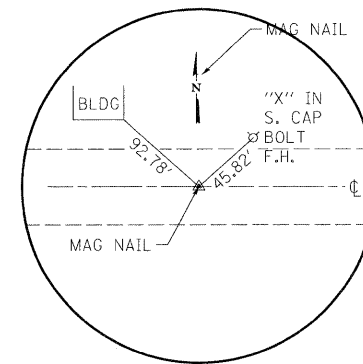
**P.O.C. STA. 1140+00.00
MAG NAIL**

N - 1,051,936.3221
E - 2,534,322.9836



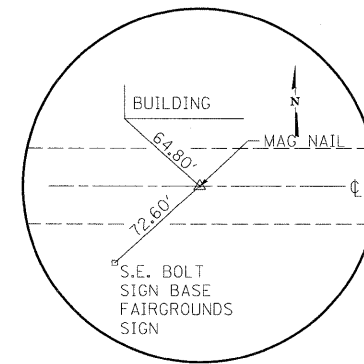
**P.T. STA. 1146+76.43
MAG NAIL**

N - 1,052,137.8380
E - 2,534,959.7169



**P.O.T. STA. 1154+00.00
MAG NAIL**

N - 1,052,137.8380
E - 2,535,683.2756



**P.O.T. STA. 1162+00.00
MAG NAIL**

N - 1,052,142.3074
E - 2,536,483.2631

GREENE & BRADFORD, INC.



FILE NAME = J:\09022.07\CADD\CAD\sheet\0902207-sh1-TB.dgn
PLOT SCALE = 50.0000" / in.
PLOT DATE = 11/19/2009
G&B PROJECT: 09002.07
PLOT DRIVER = VB:TDS708.PS_LOCAL_ID0T.pltcf

USER NAME = frankv
DESIGNED - WCB
DRAWN - FAV
CHECKED - WCB
DATE - 9/28/09

REVISED -
REVISED -
REVISED -
REVISED -

**CITY OF TAYLORVILLE
SPRESSER STREET IMPROVEMENTS**

HORIZONTAL AND VERTICAL CONTROL

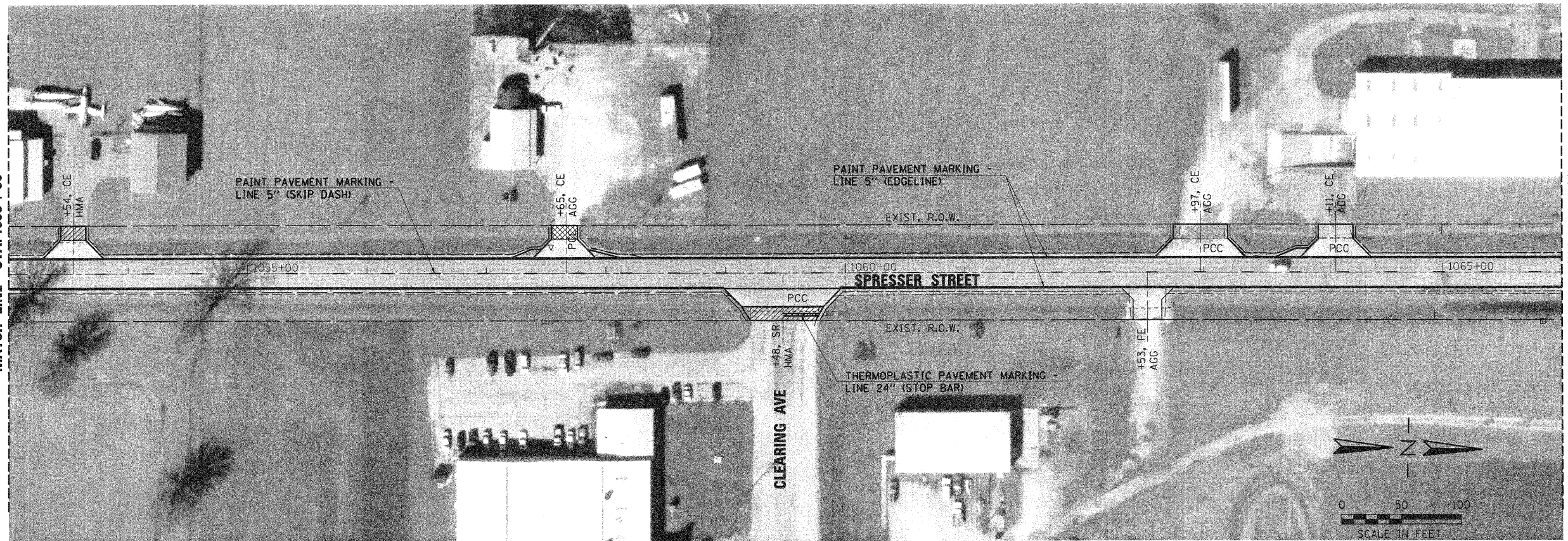
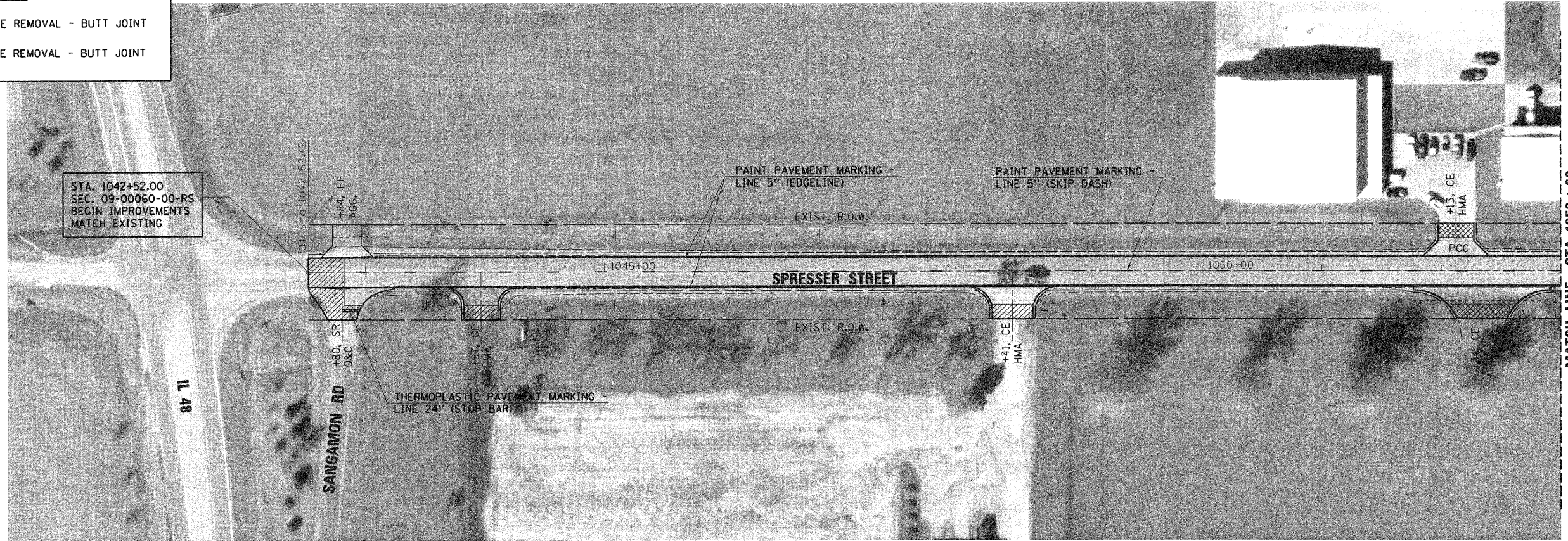
SCALE: SHEET NO. 1 OF 1 SHEETS STA. TO STA.

F.A.U. RTE.	SECTION	COUNTY	TOTAL SHEETS	SHEET NO.
7877	09-00060-00-RS	CHRISTIAN	14	9
CONTRACT NO. 93512				

FED. ROAD DIST. NO. ILLINOIS FED. AID PROJECT ARA-M-5067(017)

LEGEND

- HMA SURFACE REMOVAL - BUTT JOINT
- PCC SURFACE REMOVAL - BUTT JOINT



GREENE & BRADFORD, INC.
 OF SPRINGFIELD
 CIVIL ENGINEERS
 1001 N. WASHINGTON ST.
 SPRINGFIELD, ILL. 62760
 PHONE: 217-223-1111
 FAX: 217-223-1112
 WWW.GRENEANDBRADFORD.COM



FILE NAME = J:\09002.07\CADD\CADsheets\0900207-shd-plan01.dgn	USER NAME = frankv	DESIGNED - MDS/WCB	REVISED -
PLOT SCALE = 50.0000' / 1" in.	PLOT DATE = 11/19/2009	DRAWN - MDS	REVISED -
G&B PROJECT: 09002.07	DATE - 9/10/09	CHECKED - WCB	REVISED -
PLOT DRIVER = V8i_TDS700_PS_LOCAL_IDOT.plt\Fg			REVISED -

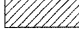

**CITY OF TAYLORVILLE
SPRESSER STREET IMPROVEMENTS**

PLAN

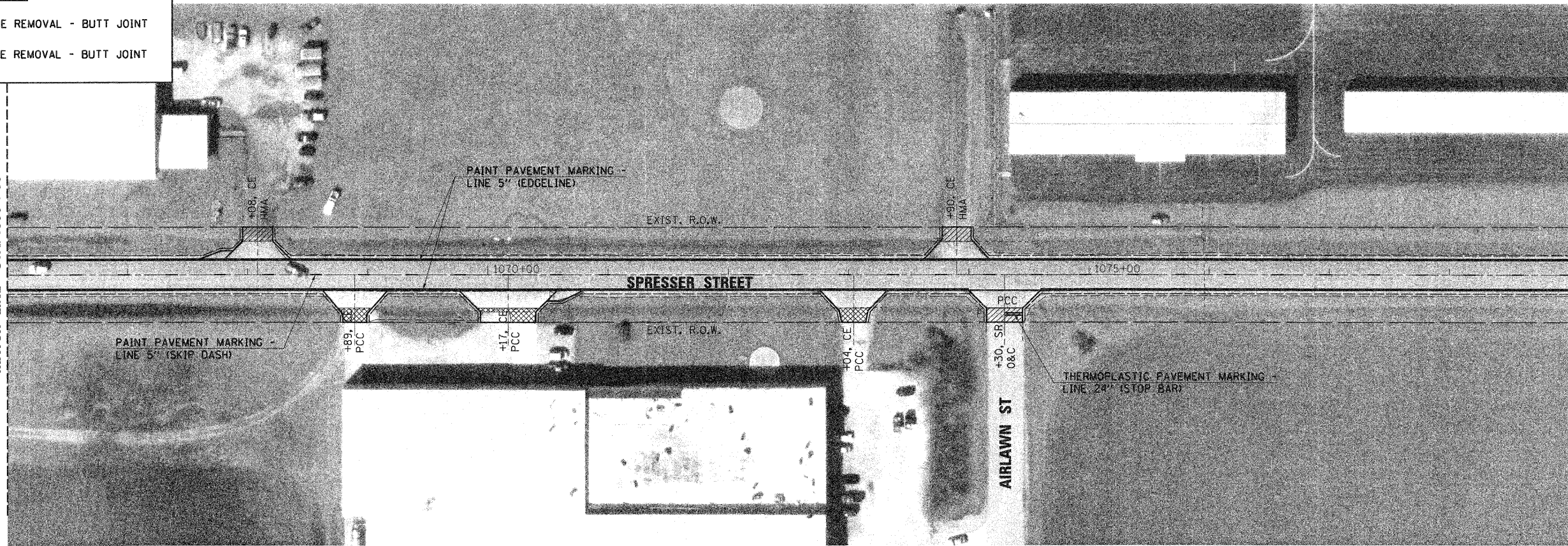
SCALE: 1" = 100' SHEET NO. OF SHEETS STA. 1042+52 TO STA. 1066+00

F.A.U. RTE.	SECTION	COUNTY	TOTAL SHEETS	SHEET NO.
7877	09-00060-00-RS	CHRISTIAN	14	10
CONTRACT NO. 093512				
ILLINOIS FED. AID PROJECT ARA-M-5067017				

LEGEND

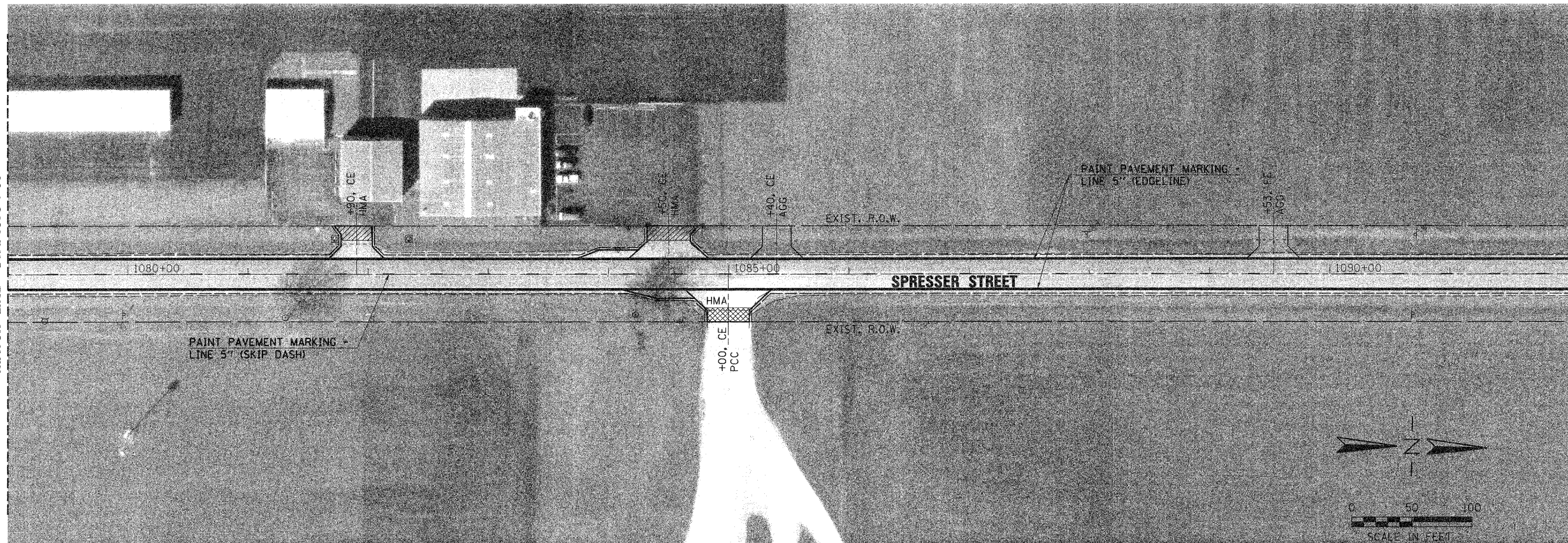
-  HMA SURFACE REMOVAL - BUTT JOINT
-  PCC SURFACE REMOVAL - BUTT JOINT

MATCH LINE STA. 1066+00

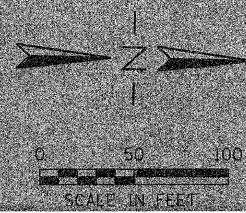


MATCH LINE STA. 1079+00

MATCH LINE STA. 1079+00



MATCH LINE STA. 1092+00



FILE NAME = J:\09022.07\CADD\CADsheets\0902207-sh1-plan02.dgn
 G&B PROJECT: 09002.07
 PLOT DRIVER = V8i.TDS700.PS.LOCAL.ID01.plt

USER NAME = Frankv
 PLOT SCALE = 50.0000' / in.
 PLOT DATE = 11/19/2009

DESIGNED - MDS/WCB
 DRAWN - MDS
 CHECKED - WCB
 DATE - 9/10/09

REVISED -
 REVISED -
 REVISED -
 REVISED -

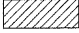

**CITY OF TAYLORVILLE
 SPRESSER STREET IMPROVEMENTS**

PLAN

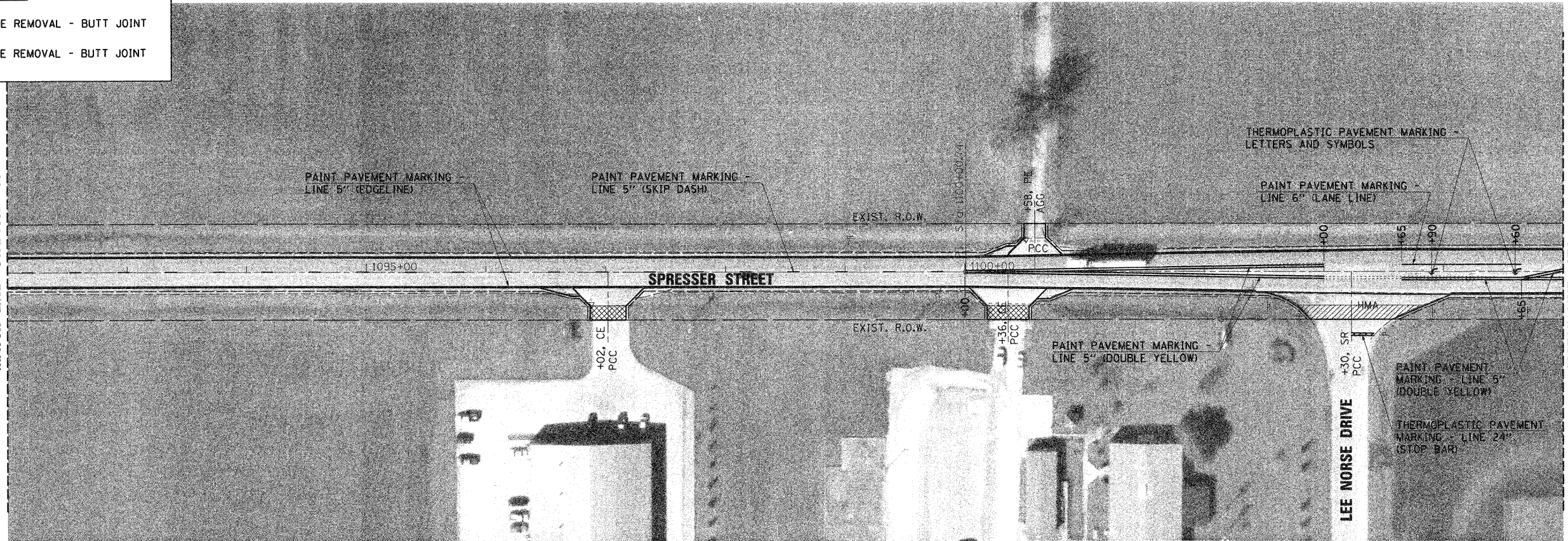
SCALE: 1" = 100' SHEET NO. OF SHEETS STA. 1066+00 TO STA. 1092+00

F.A.U. RTE.	SECTION	COUNTY	TOTAL SHEETS	SHEET NO.
7877	09-00060-00-RS	CHRISTIAN	14	11
CONTRACT NO. 03512				
ILLINOIS FED. AID PROJECT ARA-M-5067(017)				

LEGEND

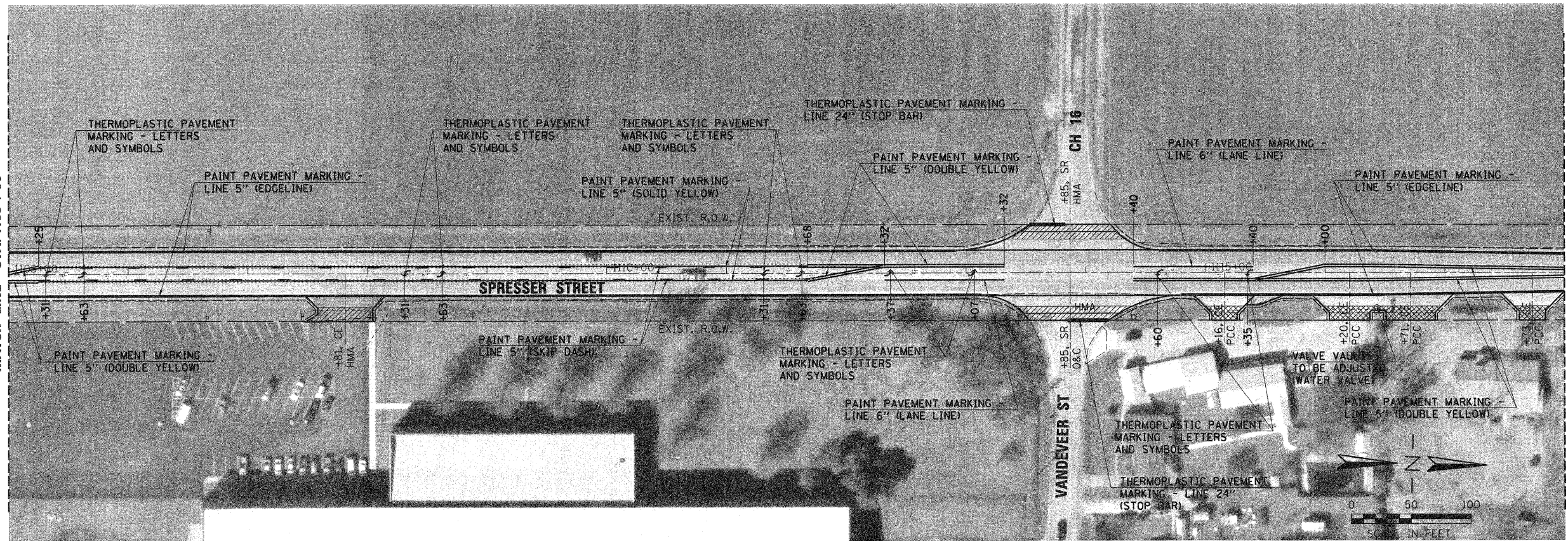
-  HMA SURFACE REMOVAL - BUTT JOINT
-  PCC SURFACE REMOVAL - BUTT JOINT

MATCH LINE STA. 1092+00



MATCH LINE STA. 1105+00

MATCH LINE STA. 1105+00



MATCH LINE STA. 1118+00



FILE NAME = J:\09002.07\CADD\CAD\sheets\0900207-sht-plan03.dgn	USER NAME = frankv	DESIGNED - MDS/WCB	REVISED -
PLOT SCALE = 50.0000' / 1" IN.	PLOT DATE = 11/19/2009	DRAWN - MDS	REVISED -
		CHECKED - WCB	REVISED -
		DATE - 9/10/09	REVISED -

**CITY OF TAYLORVILLE
SPRESSER STREET IMPROVEMENTS**

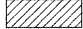

PLAN

SCALE: 1" = 100' SHEET NO. OF SHEETS STA. 1092+00 TO STA. 1118+00

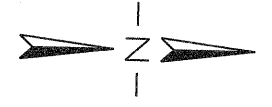
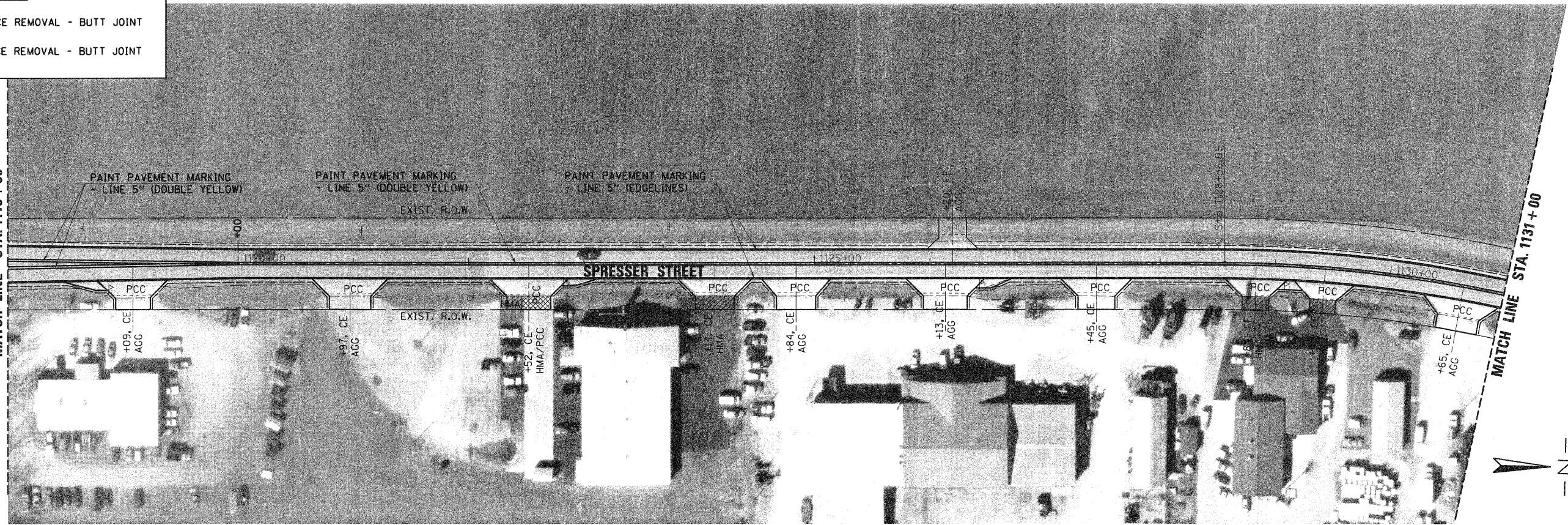
F.A.U. RTE.	SECTION	COUNTY	TOTAL SHEETS	SHEET NO.
7877	09-00060-00-RS	CHRISTIAN	14	12
CONTRACT NO. 93512				
ILLINOIS FED. AID PROJECT ARA-M-5067017				

PLOT DRIVER = V8i_TDS700.PS_LOCAL_ID001.plt\Fg

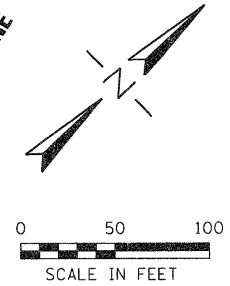
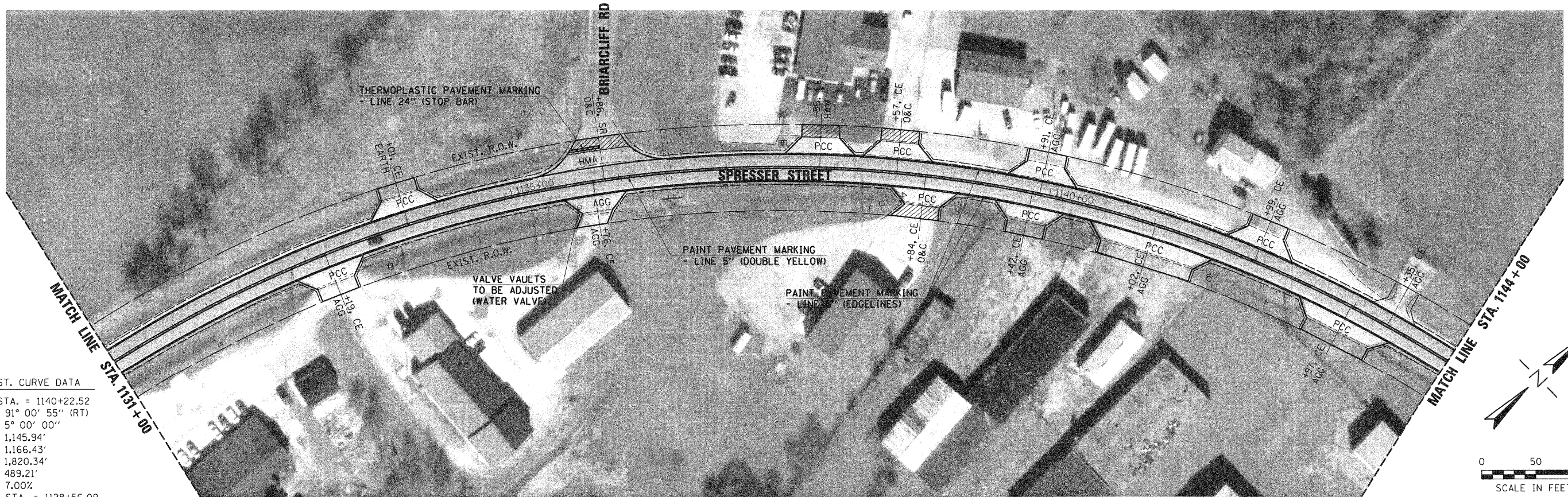
LEGEND

-  HMA SURFACE REMOVAL - BUTT JOINT
-  PCC SURFACE REMOVAL - BUTT JOINT

MATCH LINE STA. 1118+00



MATCH LINE STA. 1131+00



EXIST. CURVE DATA
 PI STA. = 1140+22.52
 Δ = 91° 00' 55" (RT)
 D = 5° 00' 00"
 R = 1,145.94'
 T = 1,166.43'
 L = 1,820.34'
 E = 489.21'
 e = 7.00%
 P.C. STA. = 1128+56.09
 P.T. STA. = 1146+76.43

GREENE & BRADFORD, INC.
 OF ENGINEERS
 1000 N. W. 10th St., Suite 100
 Ft. Lauderdale, FL 33304
 (954) 575-1111

FILE NAME = J:\09002\07\CADD\CADsheets\0900207-sh-Plan04.dgn
 USER NAME = Frankv
 DESIGNED - MDS/WCB
 DRAWN - MDS
 CHECKED - WCB
 DATE - 9/10/09
 PLOT SCALE = 50.0000' / in.
 PLOT DATE = 11/19/2009

DESIGNED - MDS/WCB	REVISED -
DRAWN - MDS	REVISED -
CHECKED - WCB	REVISED -
DATE - 9/10/09	REVISED -



**CITY OF TAYLORVILLE
 SPRESSER STREET IMPROVEMENTS**

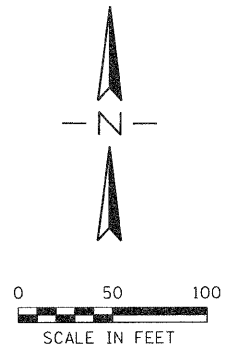
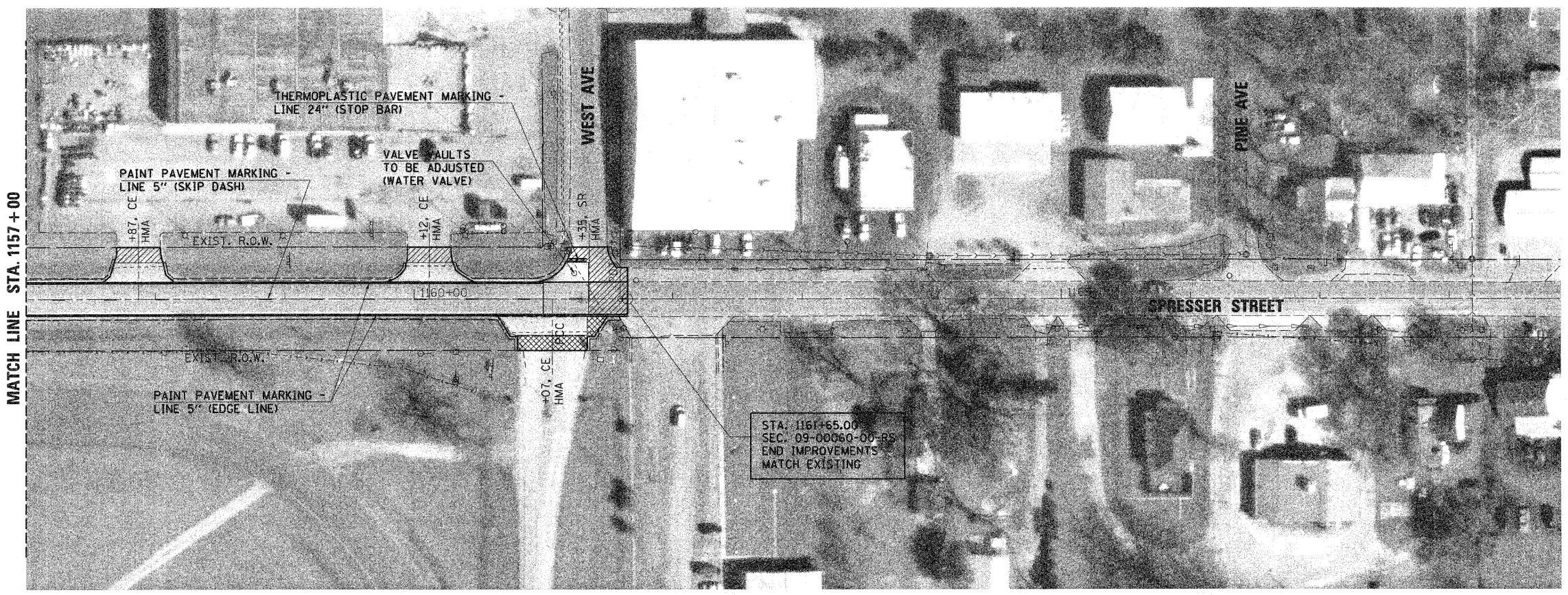
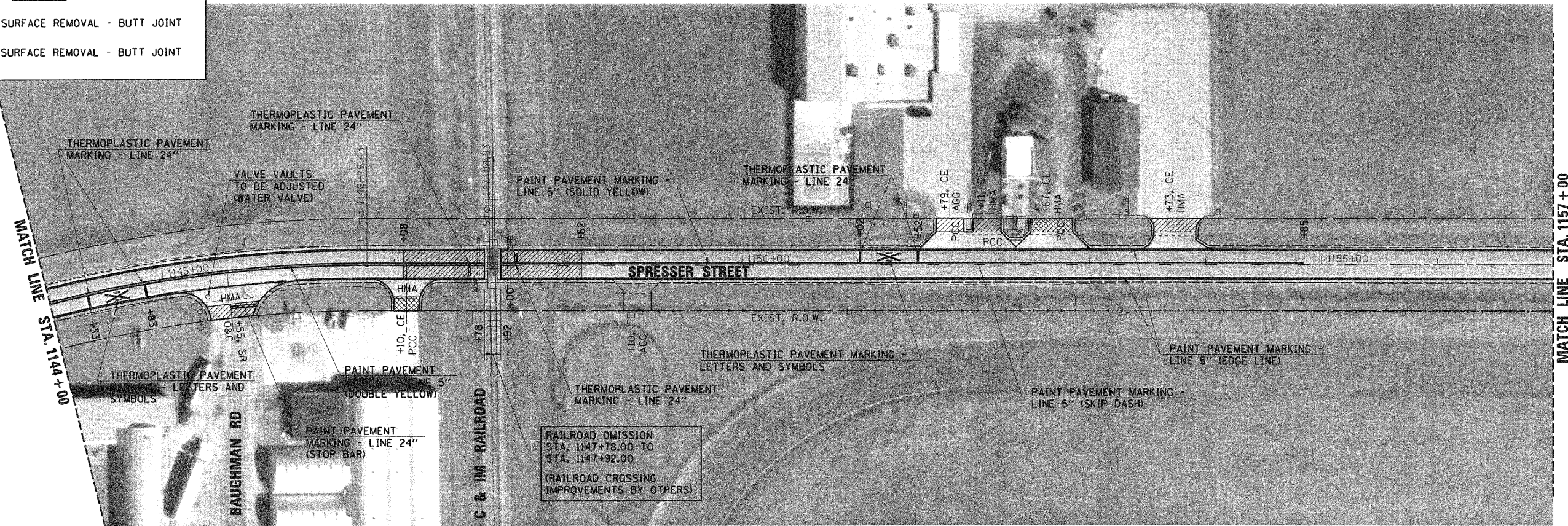
PLAN

SCALE: 1" = 100' SHEET NO. OF SHEETS STA. 1118+00 TO STA. 1144+00

F.A.U. RTE.	SECTION	COUNTY	TOTAL SHEETS	SHEET NO.
7877	09-00060-00-RS	CHRISTIAN	14	13
				CONTRACT NO. 09312
ILLINOIS FED. AID PROJECT ARA-M-5067(017)				

LEGEND

-  HMA SURFACE REMOVAL - BUTT JOINT
-  PCC SURFACE REMOVAL - BUTT JOINT



GREENE & BRADFORD, INC.
 OF SPRINGFIELD
 ENGINEERS, ARCHITECTS, PLANNERS
 100 SOUTH MAIN STREET, SUITE 200
 SPRINGFIELD, ILLINOIS 62761
 TEL: 217/223-1111 FAX: 217/223-1112
 WWW.GRENEANDBRADFORD.COM

FILE NAME =	USER NAME = Frankv	DESIGNED - MDS/WCB	REVISED -
J:\09002\09\CADD\CAD\sheet\0900207-sht-plan05.dgn		DRAWN - MDS	REVISED -
	PLOT SCALE = 50.0000' / in.	CHECKED - WCB	REVISED -
	PLOT DATE = 11/19/2009	DATE - 9/10/09	REVISED -

CITY OF TAYLORVILLE
SPRESSER STREET IMPROVEMENTS

PLAN			
SCALE: 1" = 100'	SHEET NO.	OF	SHEETS
			STA. 1144+00 TO STA. 1161+65

F.A.U. RTE.	SECTION	COUNTY	TOTAL SHEETS	SHEET NO.
7877	09-00060-00-RS	CHRISTIAN	14	14
				CONTRACT NO. 093512
ILLINOIS FED. AID PROJECT ARA-M-5067(017)				