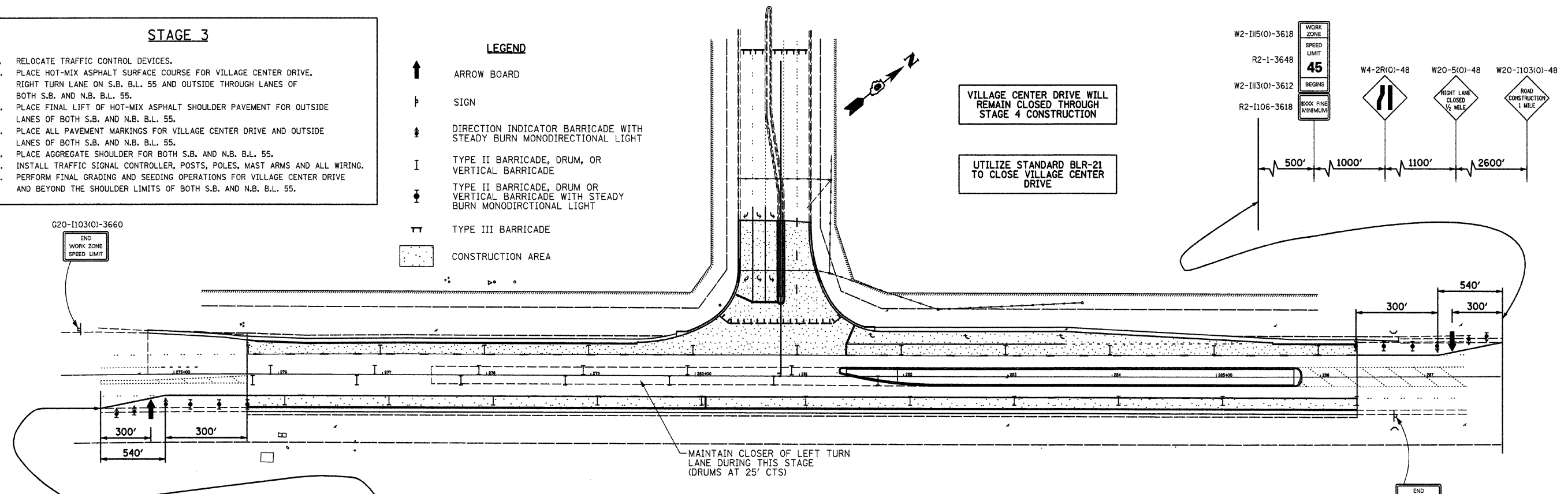


STAGE 3

1. RELOCATE TRAFFIC CONTROL DEVICES.
2. PLACE HOT-MIX ASPHALT SURFACE COURSE FOR VILLAGE CENTER DRIVE, RIGHT TURN LANE ON S.B. B.L. 55 AND OUTSIDE THROUGH LANES OF BOTH S.B. AND N.B. B.L. 55.
3. PLACE FINAL LIFT OF HOT-MIX ASPHALT SHOULDER PAVEMENT FOR OUTSIDE LANES OF BOTH S.B. AND N.B. B.L. 55.
4. PLACE ALL PAVEMENT MARKINGS FOR VILLAGE CENTER DRIVE AND OUTSIDE LANES OF BOTH S.B. AND N.B. B.L. 55.
5. PLACE AGGREGATE SHOULDER FOR BOTH S.B. AND N.B. B.L. 55.
6. INSTALL TRAFFIC SIGNAL CONTROLLER, POSTS, POLES, MAST ARMS AND ALL WIRING.
7. PERFORM FINAL GRADING AND SEEDING OPERATIONS FOR VILLAGE CENTER DRIVE AND BEYOND THE SHOULDER LIMITS OF BOTH S.B. AND N.B. B.L. 55.

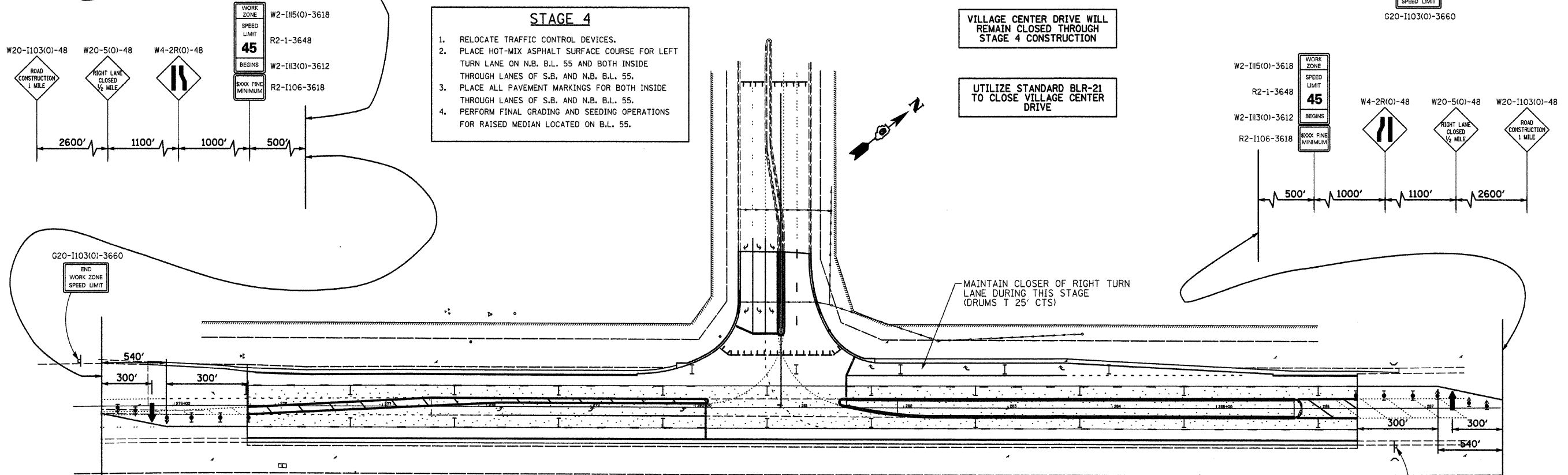
LEGEND

- ↑ ARROW BOARD
- ↓ SIGN
- ↕ DIRECTION INDICATOR BARRICADE WITH STEADY BURN MONODIRECTIONAL LIGHT
- I TYPE II BARRICADE, DRUM, OR VERTICAL BARRICADE
- ⊥ TYPE II BARRICADE, DRUM OR VERTICAL BARRICADE WITH STEADY BURN MONODIRECTIONAL LIGHT
- ⊥ TYPE III BARRICADE
- ▨ CONSTRUCTION AREA



STAGE 4

1. RELOCATE TRAFFIC CONTROL DEVICES.
2. PLACE HOT-MIX ASPHALT SURFACE COURSE FOR LEFT TURN LANE ON N.B. B.L. 55 AND BOTH INSIDE THROUGH LANES OF S.B. AND N.B. B.L. 55.
3. PLACE ALL PAVEMENT MARKINGS FOR BOTH INSIDE THROUGH LANES OF S.B. AND N.B. B.L. 55.
4. PERFORM FINAL GRADING AND SEEDING OPERATIONS FOR RAISED MEDIAN LOCATED ON B.L. 55.



STAGE 5

1. REMOVE TRAFFIC CONTROL DEVICES AND OPEN IMPROVEMENTS TO TRAFFIC.

FILE NAME =	USER NAME = #USER#	DESIGNED - T.T.P.	REVISED -	STATE OF ILLINOIS DEPARTMENT OF TRANSPORTATION	MAINTENANCE OF TRAFFIC PLAN SHEET 1		F.A.P. RTE. 666	SECTION 09-0015-00-PV	COUNTY SANGAMON	TOTAL SHEETS 25	SHEET NO. 16
#FILEL#		DRAWN - J.T.F.	REVISED -		INTERSECTION CONSTRUCTION (BL-55 & VILLAGE CTR DR), SHERMAN, IL					CONTRACT NO. 9351	
		CHECKED - T.T.P.	REVISED -		SCALE: 1"=50'	SHEET NO. 16 OF 25 SHEETS	STA.	TO STA.	ILLINOIS FED. AID PROJECT		
		DATE - 11/20/09	REVISED -								