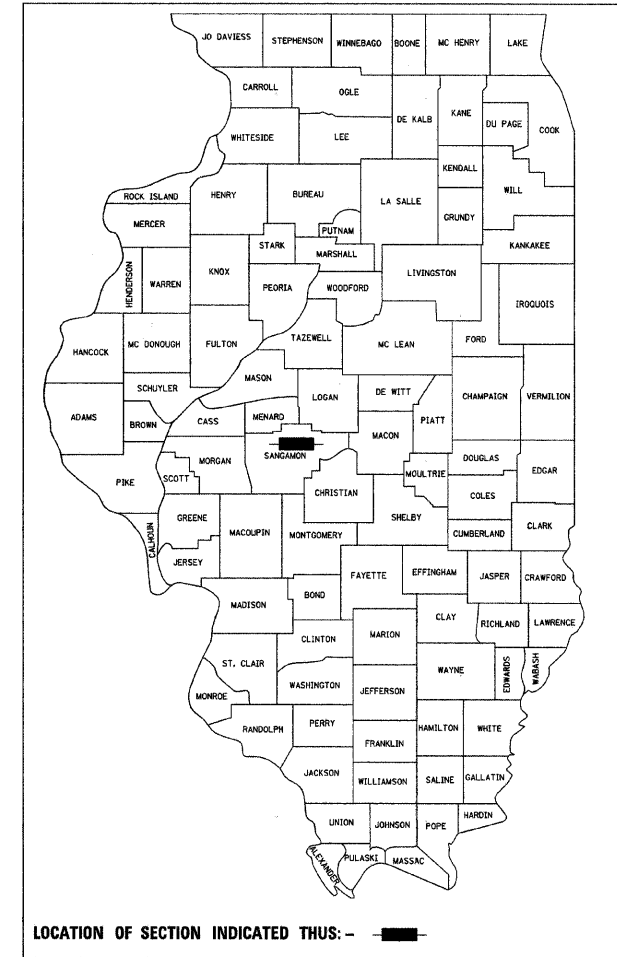


F.A.P. RTE.	SECTION	COUNTY	TOTAL SHEETS	SHEET NO.
666	09-00015-00 PV	SANGAMON	25	1
FED. ROAD DIST. NO.	ILLINOIS	CONTRACT NO.	93513	
* VILLAGE OF SHERMAN				

INDEX OF SHEETS

- 1 COVER SHEET
- 2 SPECIFICATIONS/GENERAL NOTES AND MISC DETAILS
- 3-4 TYPICAL SECTIONS
- 5 SUMMARY OF QUANTITIES
- 6 SCHEDULE OF QUANTITIES
- 7 VILLAGE CENTER DRIVE INTERSECTION PLAN PROFILE
- 8 BUSINESS LOOP 55 PLAN SHEET
- 9 LAYOUT AND GRADING PLAN
- 10 STRIPING PLAN
- 11 EROSION PLAN
- 12 TRAFFIC SIGNAL SCHEDULE
- 13 SIGNAL PLAN
- 14 CABLE PLAN
- 15-16 MAINTENANCE OF TRAFFIC PLAN SHEET
- 17-25 CROSS SECTION SHEETS

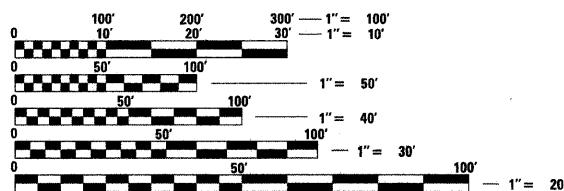
STATE OF ILLINOIS
DEPARTMENT OF TRANSPORTATION
DIVISION OF LOCAL ROADS
PROPOSED
IMPROVEMENT PLANS
AMERICAN RECOVERY AND REINVESTMENT ACT
FAP: ROUTE 666
SECTION: 09-00015-00 PV
PROJECT: ARA - 0167(059)
INTERSECTION CONSTRUCTION
(BUSINESS LOOP 55 AND VILLAGE CENTER DRIVE)
SHERMAN, IL
SANGAMON COUNTY
C-96-210-10



LIST OF STANDARDS

280001-05	606001-04	720016-02	877011-04
420001-07	606301-04	780001-02	878001-03
602301-02	701101-02	781001-03	880006-01
602306-02	701422-02	805001-01	BLR 21-8
602401-02	701701-06	857001-01	
602701-02	701901-01	862001-01	
604006-04	720001-01	873001-02	

SCALES:

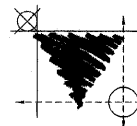


FULL SIZE PLANS HAVE BEEN PREPARED USING STANDARD ENGINEERING SCALES. REDUCED SIZED PLANS WILL NOT CONFORM TO STANDARD SCALES. IN MAKING MEASUREMENTS ON REDUCED PLANS, THE ABOVE SCALES MAY BE USED.

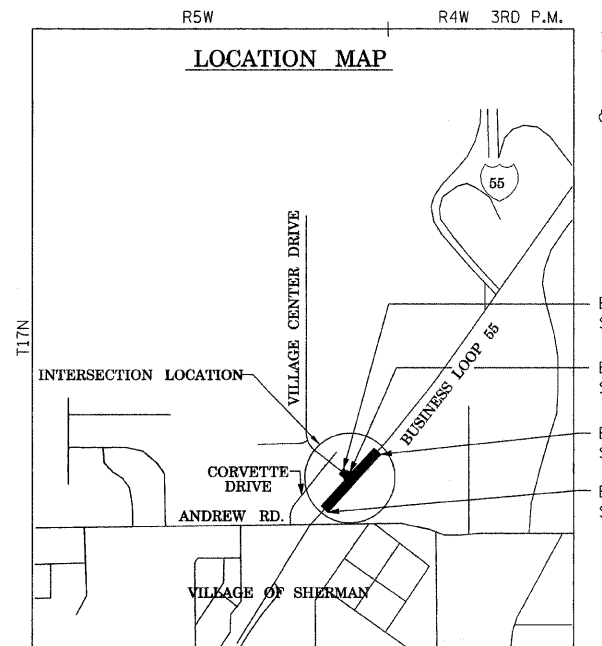
J.U.L.I.E.
 JOINT UTILITY LOCATION INFORMATION FOR EXCAVATION
 1-800-892-0123
 OR 811

AT&T COMMUNICATIONS
 CARL DONAHUE/OUTSIDE PLANT ENGINEER
 866 ROCK CREEK ROAD
 PLANO, IL 60545
 (630) 522-4677

CONTRACT NO. 93513



vasconcelles
 engineering corporation
 2417 west white oaks drive
 springfield, il 62704
 phone (217)698-3114



- END VILLAGE CENTER DRIVE STA. 2+48.50
- BEGIN VILLAGE CENTER DRIVE STA. 1+32.50
- END BL-55 IMPROVEMENT STA. 286+35
- BEGIN BL-55 IMPROVEMENT STA. 275+70

LENGTH OF IMPROVEMENTS:
 VILLAGE CENTER DRIVE = 116.00 FT = 0.022 MI.
 BL-55 = 1,065.00 FT = 0.202 MI.
 NET LENGTH OF PROJECT = 1,181.00 FT = 0.224 MI.

DESIGN CLASS:
 BL-55 (FAP 666) PRINCIPLE ARTERIAL; ADT 12,750 (29); DHV 1766; 45 MPH
 VILLAGE CENTER DRIVE (FAU 808) COLLECTOR; ADT 9720 (29) DESIGN SPEED - 30 MPH



SEAL
 LICENSE EXPIRES: 11/30/11

STATE OF ILLINOIS DEPARTMENT OF TRANSPORTATION
DIVISION OF HIGHWAYS

Approved: December 1, 2009
[Signature]
 Village President, Village of Sherman

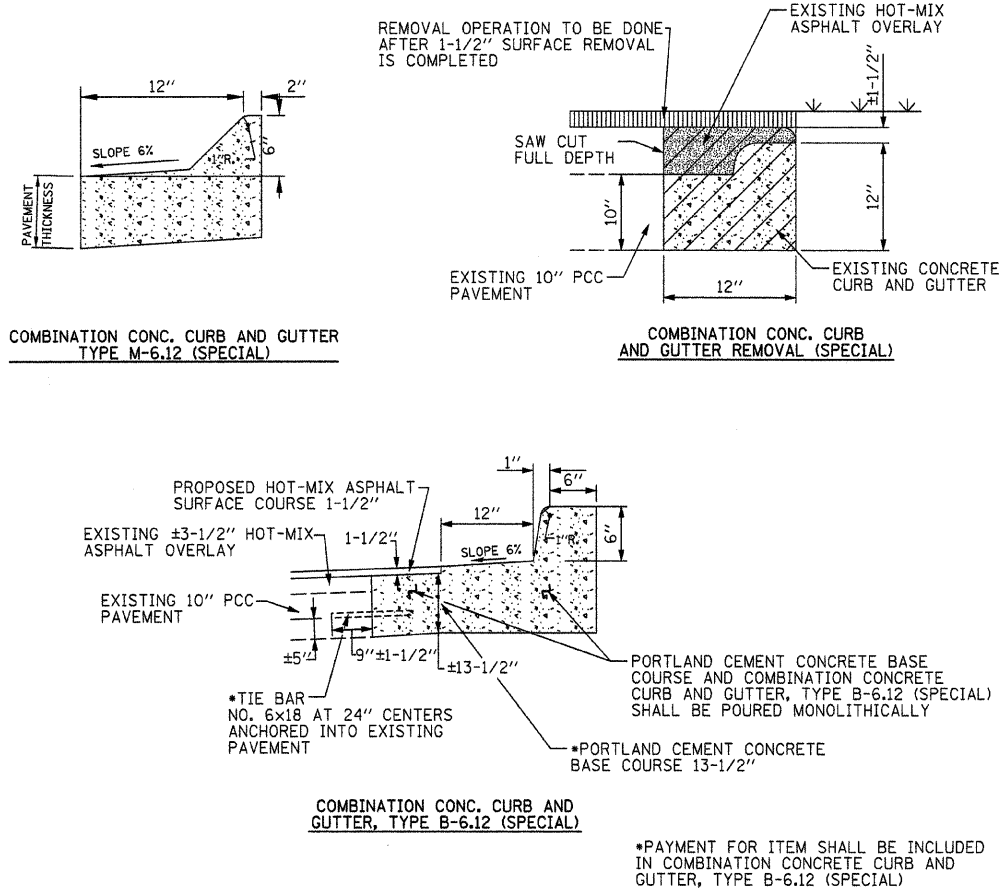
Passed: Nov 30, 2009
[Signature]
 District 6 Engineer of Local Roads & Streets

Passed: November 30, 2009
[Signature]
 District 6 Engineer of Construction

Released for Bid Based on Limited Review: Nov 30, 2009
[Signature]
 Deputy Director of Highways, Region 4 Engineer

[Signature]
 MARK T. VASCONCELLES
 DATE: 11/23/2009

MISCELLANEOUS DETAILS



SPECIFICATIONS/GENERAL NOTES

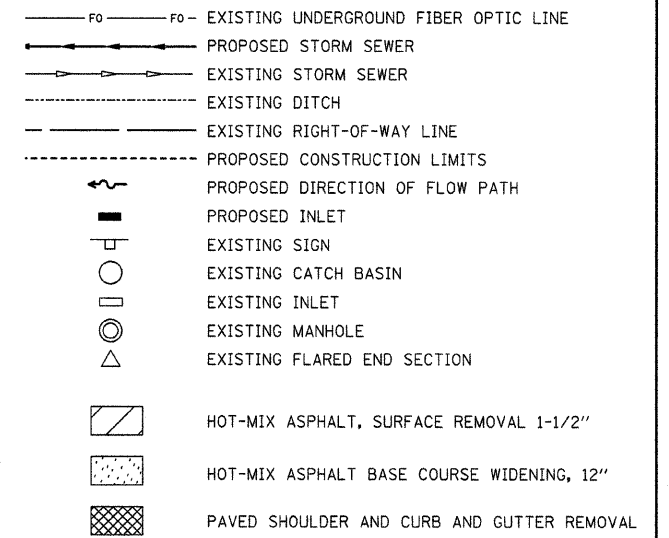
SPECIFICATIONS

SPECIFICATIONS SHALL BE THOSE OF THE STATE OF ILLINOIS DEPARTMENT OF TRANSPORTATION "STANDARD SPECIFICATIONS FOR ROAD AND BRIDGE CONSTRUCTION" ADOPTED JAN. 1, 2007, INCLUDING ALL REVISIONS CURRENT AT THE DATE OF BIDDING.

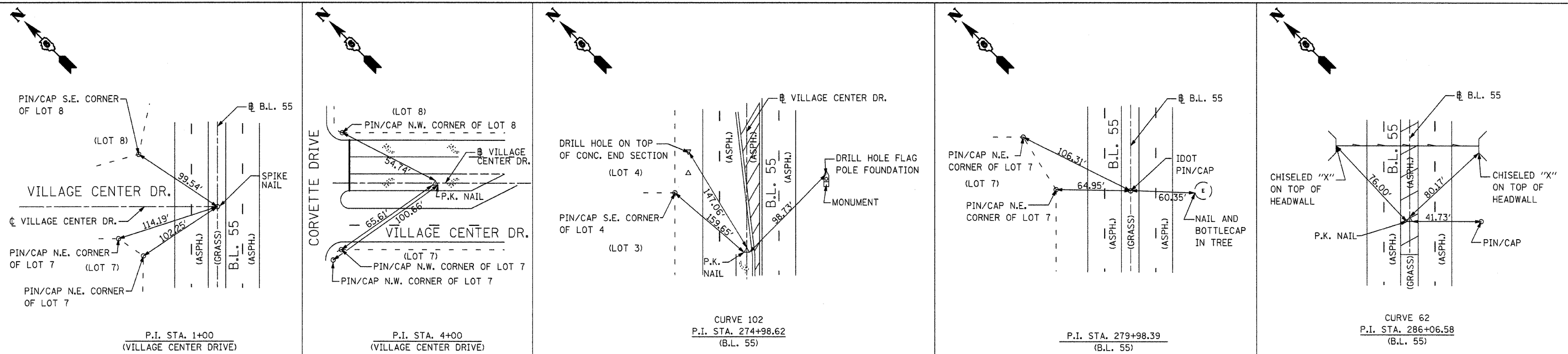
GENERAL NOTES

- 1) THE EXISTENCE AND LOCATION OF EXISTING UNDERGROUND FACILITIES SHOWN ON THESE PLANS WERE OBTAINED BY FIELD INVESTIGATION AND SEARCH OF AVAILABLE RECORDS TO THE BEST OF OUR KNOWLEDGE. THE CONTRACTOR IS REQUIRED TO TAKE PRECAUTIONARY MEASURES TO PROTECT ANY EXISTING FACILITY SHOWN HEREON AND ANY OTHER WHICH IS NOT OF RECORD OR NOT SHOWN ON THESE PLANS. IT SHALL BE THE CONTRACTOR'S RESPONSIBILITY TO ASCERTAIN THEIR EXACT LOCATION FROM THE UTILITY COMPANIES AND BY FIELD INSPECTION. (J.U.L.I.E.)
- 2) EXCESS DIRT FROM SEWER AND EARTHWORK OPERATIONS OR UNSUITABLE FILL MATERIAL MUST BE DISTRIBUTED ON SITE AS DIRECTED BY THE ENGINEER.
- 3) THE CONTRACTOR SHALL MAINTAIN ALL TEMPORARY EROSION CONTROL SHOWN ON THE PLANS UNTIL PERMANENT VEGETATION OR PAVEMENT HAS BEEN ESTABLISHED AND ACCEPTED BY THE VILLAGE OF SHERMAN.
- 4) ALL CONSTRUCTION STAKEOUT AND INSPECTION SHALL BE PROVIDED BY THE ENGINEER.
- 5) WHERE SECTION STONES OR PROPERTY MARKERS ARE ENCOUNTERED, THE ENGINEER SHALL BE NOTIFIED BEFORE SUCH STONES OR MARKERS ARE REMOVED, THE CONTRACTOR SHALL PROTECT AND PRESERVE ALL PROPERTY MARKERS UNTIL AN OWNER OR AUTHORIZED SURVEYOR HAS WITNESSED OR REFERENCED THEIR LOCATION.

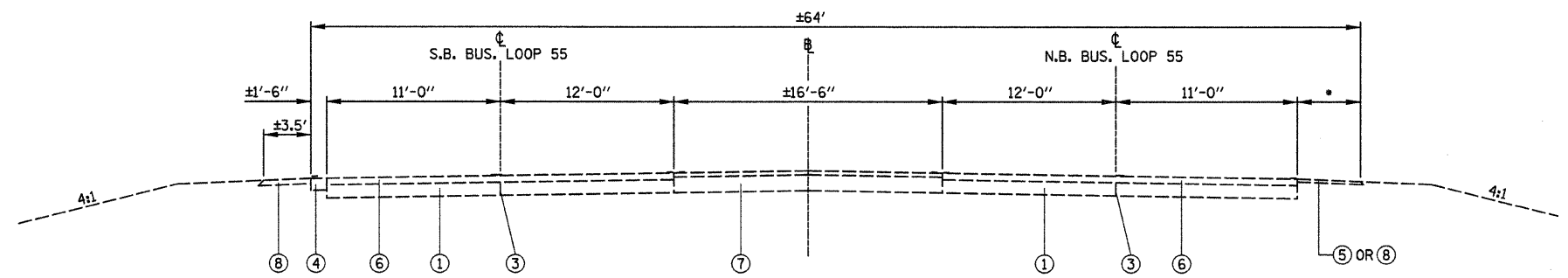
LEGEND



CENTERLINE MONUMENT TIES

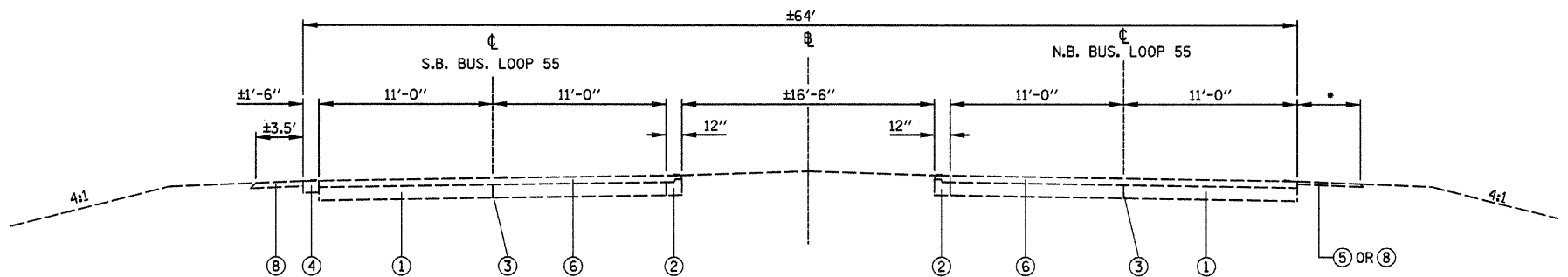


FILE NAME =	USER NAME = #USER#	DESIGNED - R.H.D.	REVISED -	STATE OF ILLINOIS DEPARTMENT OF TRANSPORTATION	SPECIFICATIONS/GENERAL NOTES AND MISCELLANEOUS DETAILS INTERSECTION CONSTRUCTION (BL-55 & VILLAGE CTR DR), SHERMAN, IL				F.A.P. RTE. 666	SECTION 09-00015-00PV	COUNTY SANGAMON	TOTAL SHEETS 25	SHEET NO. 2
#FILEL#	PLOT SCALE = #SCALE#	DRAWN - K.M.S.	REVISED -		SCALE:	SHEET NO. 2 OF 25 SHEETS	STA.	TO STA.	CONTRACT NO. 93513				
	PLOT DATE = #DATE#	CHECKED - T.T.P.	REVISED -		ILLINOIS FED. AID PROJECT								
		DATE - 11/20/09	REVISED -										



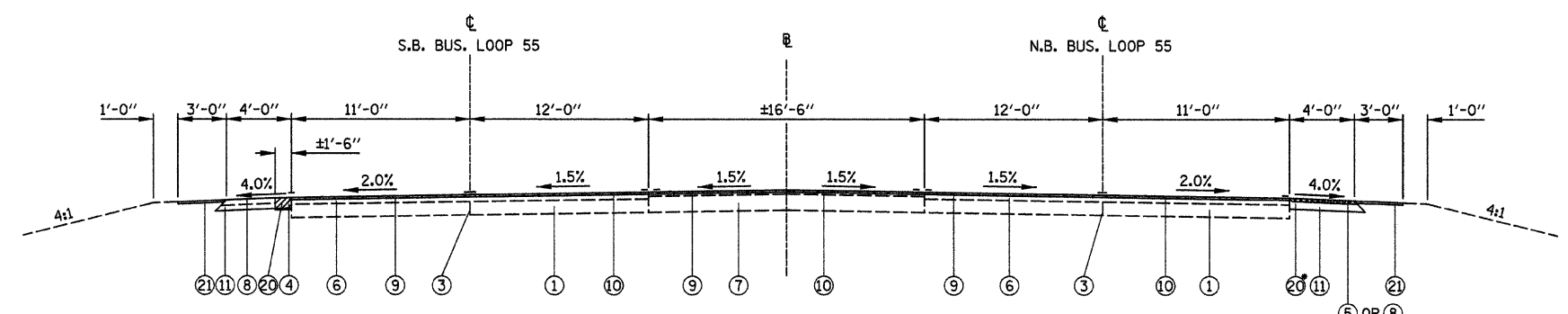
EXISTING TYPICAL SECTION BUS. LOOP 55
275+70 TO 277+47
285+81 TO 286+35

* EXISTING HOT-MIX ASPHALT SHOULDER
275+70 TO 277+47 - ±4' WIDTH
* EXISTING AGGREGATE SHOULDER
285+81 TO 286+35 - ±4' WIDTH



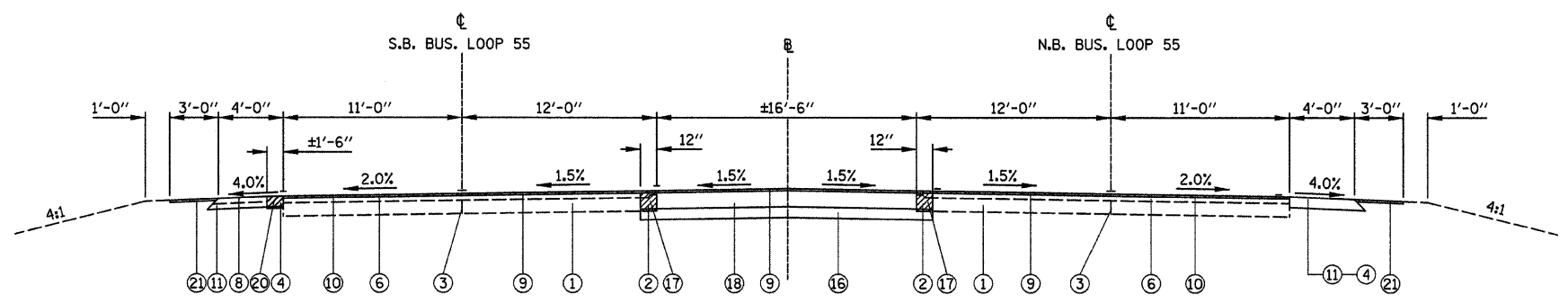
EXISTING TYPICAL SECTION BUS. LOOP 55
277+47 - 285+81

* EXISTING HOT-MIX ASPHALT SHOULDER
277+47 TO 280+04.5 - ±4' WIDTH
283+45 TO 284+71.5 - VARIES
* EXISTING AGGREGATE SHOULDER
280+04.5 TO 283+45 - ±4' WIDTH
284+71.5 TO 285+81 - ±4' WIDTH



PROPOSED TYPICAL SECTION BUS. LOOP 55
275+70 TO 277+47
285+82 TO 286+35

* PROPOSED PAVED SHOULDER REMOVAL
275+70 TO 277+47 - (±4' WIDTH)



PROPOSED TYPICAL SECTION BUS. LOOP 55
277+47 - 279+44.24

LEGEND

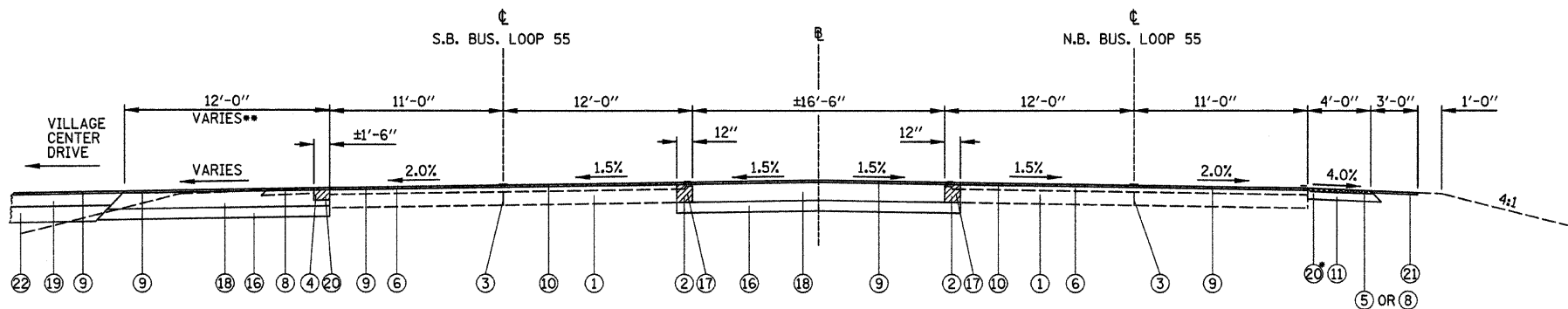
- ① EXISTING CONCRETE PAVEMENT 10"
- ② EXISTING CONCRETE CURB AND GUTTER
- ③ EXISTING LONGITUDINAL METAL JOINT
- ④ EXISTING HOT-MIX ASPHALT SHOULDER, 8"
- ⑤ EXISTING HOT-MIX ASPHALT SHOULDER, 2 1/4"
- ⑥ EXISTING HOT-MIX ASPHALT SURFACE 5"
- ⑦ EXISTING HOT-MIX ASPHALT BINDER AND SURFACE, 12"
- ⑧ EXISTING AGGREGATE SHOULDER
- ⑨ PROPOSED HOT-MIX ASPHALT SURFACE COURSE MIX "D", N70, 1 1/2"
- ⑩ PROPOSED HOT-MIX ASPHALT SURFACE REMOVAL 1 1/2"
- ⑪ PROPOSED HOT-MIX ASPHALT SHOULDERS, 8"
- ⑫ PROPOSED COMBINATION CONCRETE CURB AND GUTTER TYPE B-6.12 (SPECIAL)
- ⑬ PROPOSED COMBINATION CONCRETE CURB AND GUTTER TYPE B-6.18
- ⑭ PROPOSED COMBINATION CONCRETE CURB AND GUTTER TYPE M-6.12 (SPECIAL)
- ⑮ PROPOSED CONCRETE MEDIAN SURFACE 4"
- ⑯ PROPOSED SUB-BASE GRANULAR MATERIAL, TYPE A, 8"
- ⑰ PROPOSED COMBINATION CURB AND GUTTER REMOVAL (SPECIAL)
- ⑱ PROPOSED HOT-MIX ASPHALT BASE COURSE WIDENING, 12"
- ⑲ PROPOSED HOT-MIX ASPHALT BASE COURSE, 9"
- ⑳ PROPOSED PAVED SHOULDER REMOVAL
- ㉑ PROPOSED AGGREGATE SHOULDER TYPE B, 1"
- ㉒ PROPOSED SUB-BASE GRANULAR MATERIAL, TYPE A, 12"
- ㉓ PROPOSED SUB BASE GRANULAR MATERIAL, TYPE C

HOT-MIX ASPHALT MIXTURE REQUIREMENTS

ITEM	AGGREGATE COMPOSITION	ASPHALT GRADE	DESIGN AIR VOIDS
HMA BASE CSE & WIDENING	IL-19.0	PG 64-22	4.0%@N70
HMA LEVEL BINDER (MM)	IL-9.5 OR 12.5	PG 64-22	4.0%@N70
HMA SURFACE CSE	IL-9.5 OR 12.5 MIX "D"	PG 64-22	4.0%@N70
HMA SHOULDERS	OTHER (BAM)	PG 58-22	2.0%@N30

HOT-MIX ASPHALT QUANTITIES BASED ON 112 LB/SQ.YD/INCH

FILE NAME =	USER NAME = #USER#	DESIGNED - M.T.V.	REVISED -	STATE OF ILLINOIS DEPARTMENT OF TRANSPORTATION	TYPICAL SECTIONS	F.A.P. RTE. 666	SECTION 09-00015-00 PV	COUNTY SANGAMON	TOTAL SHEETS 25	SHEET NO. 3
FILEL		DRAWN - K.M.S.	REVISED -		INTERSECTION CONSTRUCTION (BL-55 & VILLAGE CTR DR), SHERMAN, IL	SCALE:	SHEET NO. 3 OF 25 SHEETS	STA.	TO STA.	CONTRACT NO. 9 8 5 1 3
		CHECKED - T.T.P.	REVISED -							
		DATE - 11/20/09	REVISED -							
ILLINOIS FED. AID PROJECT										



PROPOSED TYPICAL SECTION BUS. LOOP 55

279+44.24 TO 281+37.45

* PROPOSED PAVED SHOULDER REMOVAL (±4' WIDTH) 279+82 TO 280+04.5

LEGEND

- ① EXISTING CONCRETE PAVEMENT 10"
- ② EXISTING CONCRETE CURB AND GUTTER
- ③ EXISTING LONGITUDINAL METAL JOINT
- ④ EXISTING HOT-MIX ASPHALT SHOULDER, 8"
- ⑤ EXISTING HOT-MIX ASPHALT SHOULDER, 2 1/4"
- ⑥ EXISTING HOT-MIX ASPHALT SURFACE 5"
- ⑦ EXISTING HOT-MIX ASPHALT BINDER AND SURFACE, 12"
- ⑧ EXISTING AGGREGATE SHOULDER
- ⑨ PROPOSED HOT-MIX ASPHALT SURFACE COURSE MIX "D", N70, 1 1/2"
- ⑩ PROPOSED HOT-MIX ASPHALT SURFACE REMOVAL 1 1/2"
- ⑪ PROPOSED HOT-MIX ASPHALT SHOULDERS, 8"
- ⑫ PROPOSED COMBINATION CONCRETE CURB AND GUTTER TYPE B-6.12 (SPECIAL)
- ⑬ PROPOSED COMBINATION CONCRETE CURB AND GUTTER TYPE B-6.18
- ⑭ PROPOSED COMBINATION CONCRETE CURB AND GUTTER TYPE M-6.12 (SPECIAL)
- ⑮ PROPOSED CONCRETE MEDIAN SURFACE 4"
- ⑯ PROPOSED SUB-BASE GRANULAR MATERIAL, TYPE A, 8"
- ⑰ PROPOSED COMBINATION CURB AND GUTTER REMOVAL (SPECIAL)
- ⑱ PROPOSED HOT-MIX ASPHALT BASE COURSE WIDENING, 12"
- ⑲ PROPOSED HOT-MIX ASPHALT BASE COURSE, 9"
- ⑳ PROPOSED PAVED SHOULDER REMOVAL
- ㉑ PROPOSED AGGREGATE SHOULDER TYPE B, 1"
- ㉒ PROPOSED SUB-BASE GRANULAR MATERIAL, TYPE A, 12"
- ㉓ PROPOSED SUB BASE GRANULAR MATERIAL, TYPE C

** 279+44.24 TO 279+98.31 WIDENING WIDTH VARIES 1'-12'

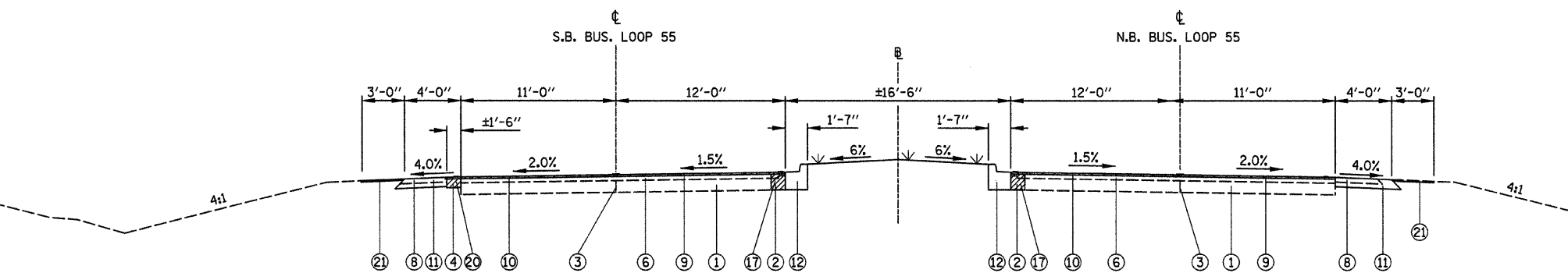
OMIT SHOULDER PAVEMENT (LT ONLY) FROM 281+37.45 TO 281+72.26 (VILLAGE CENTER DRIVE)

STA. TO STA.	"A"
281+37.45 - 283+54.19	12'-0"
283+54.19 - 285+54.29	12' TO 1'

PROPOSED TYPICAL SECTION BUS. LOOP 55

281+37.45 TO 285+54.19

* PROPOSED PAVED SHOULDER REMOVAL (±7' WIDTH) 283+45 TO 284+71.5

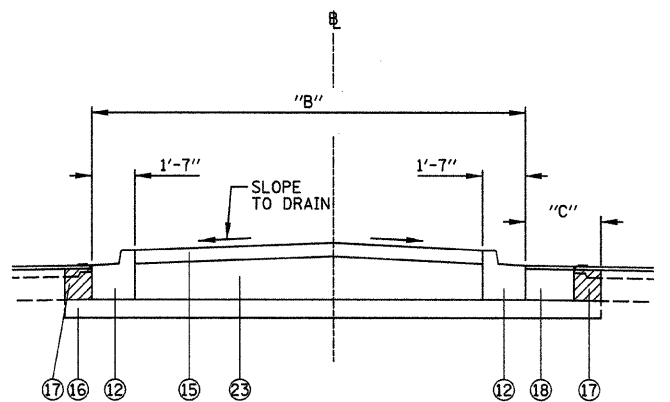


PROPOSED TYPICAL SECTION BUS. LOOP 55

285+54.19 TO 285+82

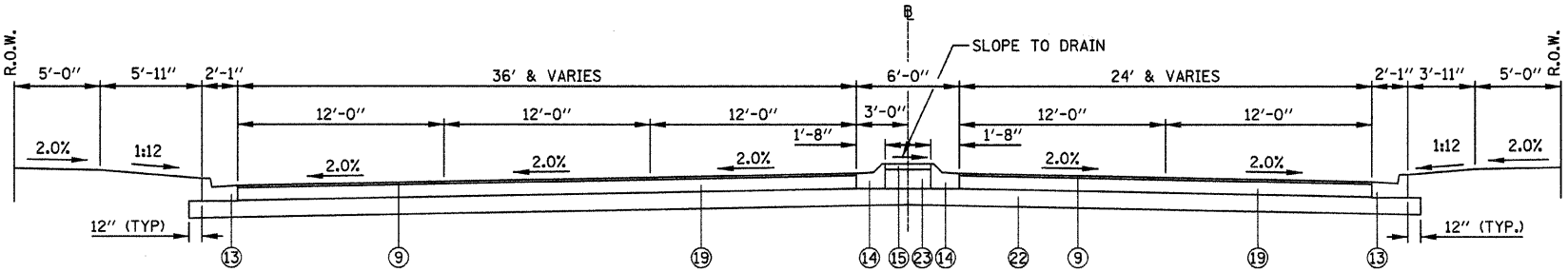
HOT-MIX ASPHALT MIXTURE REQUIREMENTS			
ITEM	AGGREGATE COMPOSITION	ASPHALT GRADE	DESIGN AIR VOIDS
HMA BASE CSE & WIDENING	IL-19.0	PG 64-22	4.0%@N70
HMA LEVEL BINDER (MM)	IL-9.5 OR 12.5	PG 64-22	4.0%@N70
HMA SURFACE CSE	IL-9.5 OR 12.5 MIX "D"	PG 64-22	4.0%@N70
HMA SHOULDERS	OTHER (BAM)	PG 58-22	2.0%@N30

HOT-MIX ASPHALT QUANTITIES BASED ON 112 LB/SQ.YD./INCH



"B" = 0' TAPERING TO ±16'-6"
"C" = 15' TAPERING TO 1'

DETAIL "B"
STA. 281+37.45 TO STA. 282+34



PROPOSED CROSS SECTION (VILLAGE CENTER DRIVE)

FILE NAME =	USER NAME = #USER#	DESIGNED - M.T.V.	REVISED -	STATE OF ILLINOIS DEPARTMENT OF TRANSPORTATION	TYPICAL SECTIONS			F.A.P. R.T.E. 666	SECTION 09-00015-00 PV	COUNTY SANGAMON	TOTAL SHEETS 25	SHEET NO. 4
#FILEL#	PLOT SCALE = #SCALE#	DRAWN - K.M.S.	REVISED -		INTERSECTION CONSTRUCTION (BL-55 & VILLAGE CTR DR), SHERMAN, IL			CONTRACT NO. 33513				
	PLOT DATE = #DATE#	CHECKED - T.T.P.	REVISED -		SCALE: SHEET NO. 4 OF 25 SHEETS STA. TO STA.			ILLINOIS FED. AID PROJECT				
		DATE - 11/20/09	REVISED -									

SUMMARY OF QUANTITIES					
CODE #	PAY ITEM	UNITS	TOTAL	STATE FUNDS	CONSTRUCTION TYPE CODE
20200100	EARTH EXCAVATION	CU YD	1820		I000
20800150	TRENCH BACKFILL	CU YD	76		I000
25000200	SEEDING, CLASS 2	ACRE	0.7		I000
25000400	NITROGEN FERTILIZER NUTRIENT	POUND	63		I000
25000500	PHOSPHORUS FERTILIZER NUTRIENT	POUND	63		I000
25000600	POTASSIUM FERTILIZER NUTRIENT	POUND	63		I000
25000700	AGRICULTURAL GROUND LIMESTONE	TON	1.4		I000
25100105	MULCH, METHOD 1	ACRE	0.7		I000
28000250	TEMPORARY EROSION CONTROL SEEDING	POUND	200		I000
28000400	PERIMETER EROSION BARRIER	FOOT	155		I000
28000500	INLET AND PIPE PROTECTION	EACH	7		I000
31100700	SUB-BASE GRANULAR MATERIAL, TYPE A 8"	SQ YD	1650		I000
31100910	SUB-BASE GRANULAR MATERIAL, TYPE A 12"	SQ YD	1105		I000
31102000	SUB-BASE GRANULAR MATERIAL, TYPE C	CU YD	54		I000
35501320	HOT-MIX ASPHALT BASE COURSE, 9"	SQ YD	958		I000
*35600724	HOT-MIX ASPHALT BASE COURSE WIDENING, 12"	SQ YD	1499		I000
40600100	BITUMINOUS MATERIALS (PRIME COAT)	GALLON	562	562	I000
40600990	TEMPORARY RAMP	SQ YD	52		I000
40603340	HOT-MIX ASPHALT SURFACE COURSE, MIX "D", N70	TON	693	693	I000
44000155	HOT-MIX ASPHALT SURFACE REMOVAL, 1-1/2"	SQ YD	5503	5503	I000
*44001900	COMBINATION CURB AND GUTTER REMOVAL (SPECIAL)	FOOT	1658		I000
44004250	PAVED SHOULDER REMOVAL	SQ YD	449		I000
48101200	AGGREGATE SHOULDERS, TYPE B	TON	30		I000
48203029	HOT-MIX ASPHALT SHOULDERS, 8"	SQ YD	908		I000
50104400	CONCRETE HEADWALL REMOVAL	EACH	2		I000
55080050	STORM SEWERS, CLASS B, TYPE 1 12"	FOOT	22		I000
55080340	STORM SEWERS, CLASS B, TYPE 2 12"	FOOT	80		I000
60218500	MANHOLES, TYPE A, 4' DIAMETER, TYPE 3 FRAME AND GRATE	EACH	1		I000
60235700	INLETS, TYPE A, TYPE 3 FRAME AND GRATE	EACH	4		I000
60240220	INLETS, TYPE B, TYPE 3 FRAME AND GRATE	EACH	1		I000
*60604200	COMBINATION CONCRETE CURB AND GUTTER, TYPE B-6.12 (SPECIAL)	FOOT	904		I000
60604400	COMBINATION CONCRETE CURB AND GUTTER, TYPE B-6.18	FOOT	254		I000
*60604900	COMBINATION CONCRETE CURB AND GUTTER, TYPE B-6.18 (VARIABLE WIDTH GUTTER FLAG)	FOOT	20		I000
*60609600	COMBINATION CONCRETE CURB AND GUTTER TYPE M-6.12 (SPECIAL)	FOOT	164		I000
60618300	CONCRETE MEDIAN SURFACE 4 INCH	SQ FT	1164		I000
67100100	MOBILIZATION	L SUM	1		I000
*70100320	TRAFFIC CONTROL AND PROTECTION, STANDARD 701422	L SUM	1		I000
*70102635	TRAFFIC CONTROL AND PROTECTION, STANDARD 701701	L SUM	1		I000
70300100	SHORT-TERM PAVEMENT MARKING	FOOT	170		I000
70300210	TEMPORARY PAVEMENT MARKING, LETTERS AND SYMBOLS	SQ FT	187..		I000
70300230	TEMPORARY PAVEMENT MARKING, LINE 5"	FOOT	5229		I000
70300240	TEMPORARY PAVEMENT MARKING, LINE 6"	FOOT	781		I000
70300260	TEMPORARY PAVEMENT MARKING, LINE 12"	FOOT	240		I000
70300280	TEMPORARY PAVEMENT MARKING, LINE 24"	FOOT	118		I000
70301000	WORK ZONE PAVEMENT MARKING REMOVAL	SQ FT	57		I000
72000200	SIGN PANEL - TYPE 2	SQ FT	59.1		I000
△ 78000300	THERMOPLASTIC PAVEMENT MARKING, LINE 5"	FOOT	4599		I000
△ 78000600	THERMOPLASTIC PAVEMENT MARKING, LINE 12"	FOOT	240		I000
△ 78004200	PREFORMED PLASTIC PAVEMENT MARKING, TYPE B-INLAID-LETTERS AND SYMBOLS	SQ FT	187..		I000
△ 78004220	PREFORMED PLASTIC PAVEMENT MARKING, TYPE B-INLAID-LINE 5"	FOOT	630		I000
△ 78004230	PREFORMED PLASTIC PAVEMENT MARKING, TYPE B-INLAID-LINE 6"	FOOT	721		I000
△ 78004280	PREFORMED PLASTIC PAVEMENT MARKING, TYPE B-INLAID-LINE 24"	FOOT	118		I000
△ 78100100	RAISED REFLECTIVE PAVEMENT MARKER	EACH	65		I000
△ 78300200	RAISED REFLECTIVE PAVEMENT MARKER REMOVAL	EACH	41		I000
80500100	SERVICE INSTALLATION, TYPE A	EACH	1		Y031-IF
81012500	CONDUIT IN TRENCH, 1 1/2" DIA., PVC	FOOT	733		Y031-IF
81012600	CONDUIT IN TRENCH, 2" DIA., PVC	FOOT	198		Y031-IF
81012800	CONDUIT IN TRENCH, 3" DIA., PVC	FOOT	133		Y031-IF
81013000	CONDUIT IN TRENCH, 4" DIA., PVC	FOOT	10		Y031-IF
*81021590	CONDUIT, AUGERED 4" DIA., PVC	FOOT	96		Y031-IF
*81306100	JUNCTION BOX (SPECIAL)	EACH	2		Y031-IF

SUMMARY OF QUANTITIES (CONT.)					
CODE #	PAY ITEM	UNITS	TOTAL	STATE FUNDS	CONSTRUCTION TYPE CODE
81400100	HANDHOLE	EACH	3		Y031-IF
81400300	DOUBLE HANDHOLE	EACH	1		Y031-IF
81900200	TRENCH AND BACKFILL FOR ELECTRICAL WORK	FOOT	1059		Y031-IF
82103250	LUMINAIRE, SODIUM VAPOR, HORIZONTAL MOUNT, PHOTO-CELL CONTROL, 250 WATT	EACH	3		Y031-IF
85700200	FULL-ACTUATED CONTROLLER AND TYPE IV CABINET	EACH	1		Y031-IF
*86200200	UNINTERRUPTIBLE POWER SUPPLY, STANDARD	EACH	1		Y031-IF
86400100	TRANSCEIVER - FIBER OPTIC	EACH	2		Y031-IF
87100110	FIBER OPTIC CABLE IN CONDUIT, NO. 62.5/125, 6F	FOOT	897		Y031-IF
87301225	ELECTRIC CABLE IN CONDUIT, SIGNAL NO. 14 3C	FOOT	547		Y031-IF
87301245	ELECTRIC CABLE IN CONDUIT, SIGNAL NO. 14 5C	FOOT	969		Y031-IF
87301255	ELECTRIC CABLE IN CONDUIT, SIGNAL NO. 14 7C	FOOT	950		Y031-IF
87301815	ELECTRIC CABLE IN CONDUIT, SERVICE, NO. 6 3C	FOOT	17		Y031-IF
87502700	TRAFFIC SIGNAL POST, ALUMINUM 16 FT.	EACH	3		Y031-IF
87702880	STEEL COMBINATION MAST ARM ASSEMBLY AND POLE 30 FT.	EACH	1		Y031-IF
87702900	STEEL COMBINATION MAST ARM ASSEMBLY AND POLE 34 FT.	EACH	1		Y031-IF
87702910	STEEL COMBINATION MAST ARM ASSEMBLY AND POLE 36 FT.	EACH	1		Y031-IF
87800100	CONCRETE FOUNDATION, TYPE A	FOOT	9		Y031-IF
87800150	CONCRETE FOUNDATION, TYPE C	FOOT	3		Y031-IF
87800400	CONCRETE FOUNDATION, TYPE E 30-INCH DIAMETER	FOOT	40		Y031-IF
87900200	DRILL EXISTING HANDHOLE	EACH	1		Y031-IF
88040070	SIGNAL HEAD, POLYCARBONATE, LED, 1-FACE, 3-SECTION, BRACKET MOUNTED	EACH	1		Y031-IF
88040090	SIGNAL HEAD, POLYCARBONATE, LED, 1-FACE, 3-SECTION, MAST ARM MOUNTED	EACH	6		Y031-IF
88040150	SIGNAL HEAD, POLYCARBONATE, LED, 1-FACE, 5-SECTION, BRACKET MOUNTED	EACH	3		Y031-IF
88040160	SIGNAL HEAD, POLYCARBONATE, LED, 1-FACE, 5-SECTION, MAST ARM MOUNTED	EACH	1		Y031-IF
88040230	SIGNAL HEAD, POLYCARBONATE, LED, 2-FACE, 3-SECTION, BRACKET MOUNTED	EACH	1		Y031-IF
88040290	SIGNAL HEAD, POLYCARBONATE, LED, 2-FACE, 5-SECTION, BRACKET MOUNTED	EACH	1		Y031-IF
88200100	TRAFFIC SIGNAL BACKPLATE	EACH	11		Y031-IF
*X0320872	VIDEO VEHICLE DETECTION SYSTEM	FOOT	1		Y031-IF
*X0323153	ELECTRIC CABLE IN CONDUIT, GROUND, NO. 6 1C (GREEN)	FOOT	540		Y031-IF
*X0326473	ELECTRIC CABLE IN CONDUIT, NO. 14 3C FOR VIDEO	FOOT	610		Y031-IF
*X8170245	ELECTRIC CABLE IN CONDUIT, 600V (XLP-TYPE USE) 3-1/C NO. 12	FOOT	610		Y031-IF

*SPECIAL PROVISION

NOTE: ALL CONSTRUCTION TYPE CODE Y031-IF AND ITEMS DESIGNATED BY A Δ, ARE CONSIDERED SPECIALTY ITEMS.

FILE NAME =	USER NAME = #USER#	DESIGNED - M.T.V.	REVISED - 01-15-10	STATE OF ILLINOIS DEPARTMENT OF TRANSPORTATION				SUMMARY OF QUANTITIES				F.A.P. RTE.	SECTION	COUNTY	TOTAL SHEETS	SHEET NO.
#FILE#		DRAWN - K.M.W.	REVISED -					INTERSECTION CONSTRUCTION (BL-55 & VILLAGE CTR DR), SHERMAN, IL				666	09-00015-00 PV	SANGAMON	25	5
		CHECKED - T.T.P.	REVISED -					SCALE: SHEET NO. 5 OF 25 SHEETS STA. TO STA.				CONTRACT NO. [ILLINOIS] FED. AID PROJECT				
		DATE - 11/20/09	REVISED -													

SEEDING SCHEDULE						
LOCATION (STATION TO STATION)	SEEDING CL 2	NITROGEN FERT NUTR	PHOSPHORUS FERT NUTR	POTASSIUM FERT NUTR	AGR GROUND LIMESTONE	MULCH METHOD 1
	(ACRE)	(POUND)	(POUND)	(POUND)	(TON)	(ACRE)
1+70 LT TO 2+54 LT	0.03	3	3	3	0.06	0.03
1+70 RT TO 2+54 RT	0.03	3	3	3	0.06	0.03
274+75 LT TO 280+30 LT	0.21	19	19	19	0.42	0.21
281+33 LT TO 286+75 LT	0.15	14	14	14	0.30	0.15
275+25 RT TO 285+35 RT	0.15	14	14	14	0.30	0.15
282+32 MEDIAN TO 285+75 MEDIAN	0.11	10	10	10	0.22	0.11
TOTAL =	0.67	63	63	63	1.4	0.67

TRAFFIC CONTROL		
LOCATION	TRAF CONT&PROT 701422 (LSUM)	TRAF CONT&PROT 701701 (LSUM)
ENTIRE PROJECT	1	1
TOTAL =	1	1

PAVEMENT MARKINGS SCHEDULE															
LOCATION	SHORT TERM PVT MKING (FOOT)	TEMP PVT MK LTR & SYM (FOOT)	TEMP PVT MK LINE 5 (SQ FT)	TEMP PVT MK LINE 6 (FOOT)	TEMP PVT MK LINE 12 (FOOT)	TEMP PVT MK LINE 24 (FOOT)	WORK ZONE PVT MK REM (SQ FT)	THPL PVT MK LINE 5 (FOOT)	THPL PVT MK LINE 12 (FOOT)	PREF PL PM TB INL L&S (SQ FT)	PREF PL PM TB INL L5 (FOOT)	PREF PL PM TB INL L6 (FOOT)	PREF PL PM TB INL L24 (FOOT)	RAISED REFL PAVT MKR (EACH)	RAISED REFL PVT MK REM (EACH)
NORTH LEG															
YELLOW, 5"			1118					1118							
WHITE, 5"			953					633			320				
WHITE, 6"				314					60			254			
YELLOW, 12"					60								43		
WHITE, 24"						43				46.8					
WHITE, L & S		46.8													
YELLOW 4" SHORT-TERM	90						30								
SOUTH LEG															
YELLOW, 5"			1796					1796							
WHITE, 5"			1166					886			280				
WHITE, 6"				260					180			260			
YELLOW, 12"					180								35		
WHITE, 24"						35				46.8					
WHITE, L & S		46.8													
YELLOW 4" SHORT-TERM	80						27								
WEST LEG															
WHITE, 5"			30					166							
YELLOW, 5"															
WHITE, 6"				207								207			
WHITE, 24"						40				93.6			40		
WHITE, L & S		93.6													
BUSINESS LOOP 55															
(ENTIRE SECTION)														65	
SEE SHEET 10 OF 25 SHEETS FOR SCHEDULE															
TOTAL =	170	187.2	5229	781	240	118	57	4599	240	187.2	630	721	118	65	41

PAVING SCHEDULE											
LOCATION	TEMPORARY RAMP	HMA BASE CSE 9	HMA BC WID 12	BIT MATLS PR CT	HMA MIX "D" NTO	HMA SURF REM 1/2	HMA SHOULDERS 8	PAVED SHOULDER REMOVAL	AGGREGATE SHLDS B	SUB GRAN MAT A, 8	SUB GRAN MAT A, 12
	(SQ YD)	(SQ YD)	(SQ YD)	(GALLONS)	(TON)	(SQ YD)	(SQ YD)	(SQ YD)	(TON)	(SQ YD)	(SQ YD)
VILLAGE CENTER DRIVE											
1+42.60 TO 2+49		958			81						1105
BUSINESS LOOP 55											
275+70 LT & RT	26			562	612	5503					
275+70 TO 286+35								176			
275+70 RT TO 280+04.5 RT									20		
275+70 RT TO 286+35 RT							474		7		
275+70 LT TO 279+82 LT							207			1004	
277+47 LT & RT TO 282+34 LT & RT			853								
275+78 LT TO 286+35 LT								177			
286+35 LT & RT	26										
277+47 LT & RT TO 281+36.69 LT & RT										646	
279+44.22 LT TO 285+54.19 LT			646								
281+38.20 TO 285+82											
281+72.20 LT TO 286+35 LT							227				
283+44 RT TO 284+71 RT								96			
285+15 LT TO 286+75 LT									3		
TOTAL =	52	958	1499	562	693	5503	908	449	30	1650	1105

EROSION CONTROL			
LOCATION	PERIMETER EROSION BARRIER	INLET AND PIPE PROTECTION	TEMP EROS CONTR SEED
	(FOOT)	(EACH)	(LBS)
277+40, 80' LT TO 278+60, 80' LT	155		
283+71 LT		1	
1+92 LT & RT		2	
2+00 LT & RT		2	
2+08 LT & RT		2	
VARIOUS LOCATIONS			200
(V.C.D.)= VILLAGE CENTER DRIVE			
TOTAL =	155	7	200

EARTH EXCAVATION			
LOCATION	CUT	FILL	EXCESS* (SHORTAGE)
	(CU YD)	(CU YD)	(CU YD)
VILLAGE CENTER DRIVE			
1+42.60 TO 2+49	623	24	591
BUSINESS LOOP 55			
274+75 LT TO 286+35 LT	482	434	(97)
277+47 (MEDIAN) TO 285+69 (MEDIAN)	596	94	471
275+70 RT TO 286+35 RT	119	48	55
TOTAL =	1820	600	1020

*ADJUSTED FOR SHRINKAGE

DRAINAGE SCHEDULE							
LOCATION	TRENCH BACKFILL	STORM SEW CL B 1 12	STORM SEW CL B 2 12	MAN TA 4 DIA T3F&G	INLETS TA T3F&G	INLETS TB T3F&G	CONCRETE HEADWALL REMOVAL
	(CU YD)	(FOOT)	(FOOT)	(EACH)	(EACH)	(EACH)	(EACH)
VILLAGE CENTER DRIVE							
1+92, 41.1' LT					1		
1+92, 41.1' LT TO 2+00, 40.05' LT	2	6				1	
2+00, 40.05' LT							
1+92, 37.65' RT					1		
1+92, 37.65' RT TO 2+00, 34.79' RT	2	5					
2+00, 34.79' RT				1			
1+98.37, 46.58' RT TO 2+00, 34.79' RT	6		8				
2+00, 40.05' LT TO 2+00, 34.79' RT	51		72				
2+00, 40.05' LT TO 2+08, 40.05' LT	2	6					
2+08, 40.05' LT					1		
2+00, 34.79' RT TO 2+08, 32.46' RT	2	5					
2+08, 32.46' RT					1		
BUSINESS LOOP 55							
282+61, 41' LT							1
282+75, 42' RT							1
TOTAL =	76	22	80	1	4	1	2

CURB AND GUTTER							
LOCATION	COMB CC&G TB6.12 (SPECIAL)	COMB CC&G TB6.18	COMB CC&G TB6.18 VWGF	COMB CC&G TM6.12 (SPECIAL)	CONC MEDIAN SURF 4	COMB C&G REMOV SPL	SUB GRAN MAT C
	(FOOT)	(FOOT)	(FOOT)	(FOOT)	(SQ FT)	(FOOT)	(CU YD)
279+82 LT TO 279+92 LT			10				
1+41.38 LT TO 2+49 LT		132					
1+68.90 LT & RT TO 2+49 LT & RT				164	214		8
1+48.05 RT TO 2+49 RT		122					
277+46 TO 285+79 RT & LT						1658	
281+62.35 LT TO 281+72.35 LT			10				
281+39.20 LT TO 285+82 LT	454						
281+39.20 RT TO 285+82 RT	450						
281+45 TO 282+34					950		46
TOTAL =	904	254	20	164	1164	1658	54

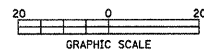
FILE NAME =	USER NAME = #USER#	DESIGNED - M.T.V.	REVISED -
#FILEL#		DRAWN - K.M.S.	REVISED -
	PLOT SCALE = #SCALE#	CHECKED - T.T.P.	REVISED -
	PLOT DATE = #DATE#	DATE - 11/20/09	REVISED -

STATE OF ILLINOIS
DEPARTMENT OF TRANSPORTATION

SCHEDULE OF QUANTITIES
INTERSECTION CONSTRUCTION (BL-55 & VILLAGE CTR DR), SHERMAN, IL

SCALE: SHEET NO. 6 OF 25 SHEETS STA. TO STA.

F.A.P. RTE.	SECTION	COUNTY	TOTAL SHEETS	SHEET NO.
666	09-00015-00 PV	SANGAMON	25	6
CONTRACT NO. 93519			ILLINOIS FED. AID PROJECT	



STA. 274+75, LT
BEGIN HOT-MIX ASPHALT
SHOULDER, 8" 3' WIDE

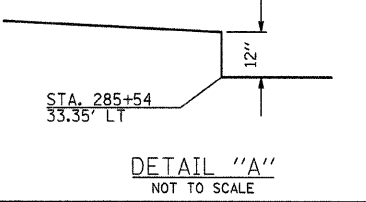
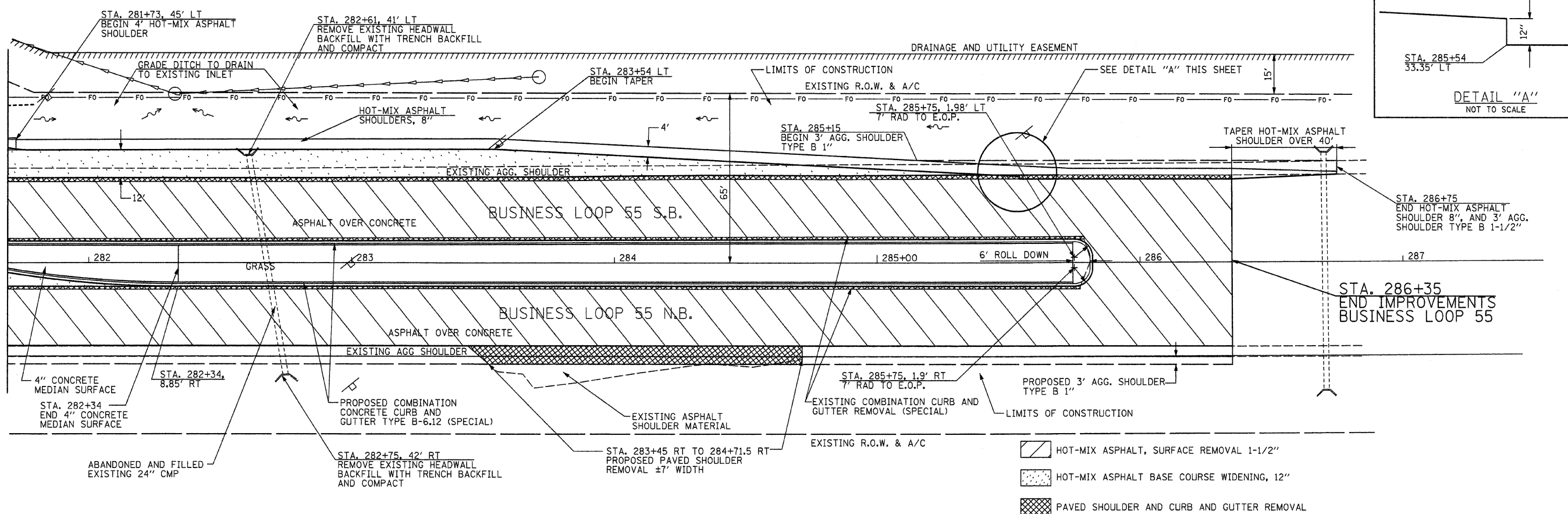
STA. 275+26
BEGIN AGG. SHOULDER
TYPE B 1"

STA. 275+70
BEGIN IMPROVEMENTS
BUSINESS LOOP 55

MATCHLINE STA. 280+00

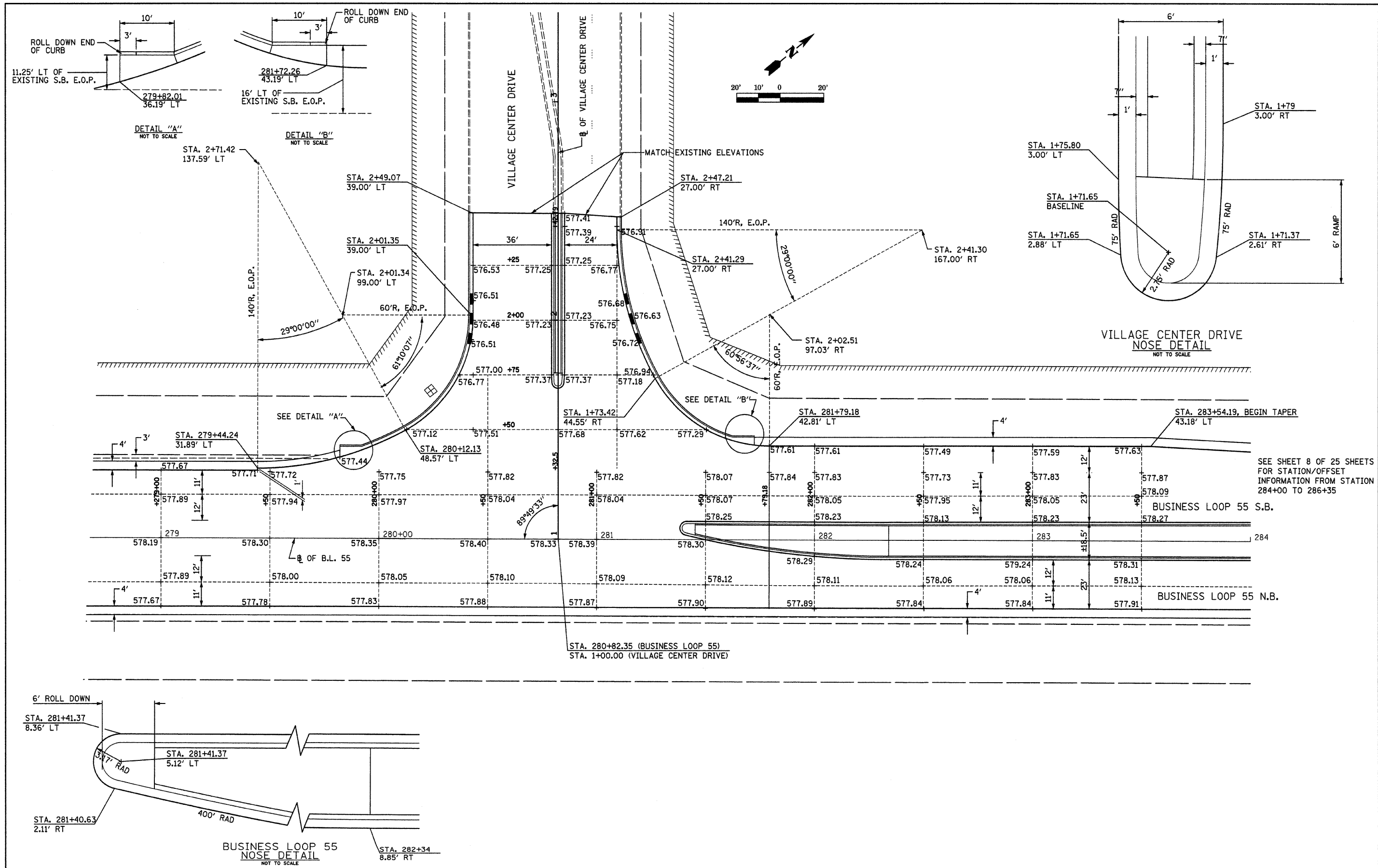
- HOT-MIX ASPHALT, SURFACE REMOVAL 1-1/2"
- SUB-BASE GRANULAR MATERIAL, TYPE A, 8" & HOT-MIX ASPHALT BASE COURSE WIDENING, 12"
- PAVED SHOULDER AND CURB AND GUTTER REMOVAL

MATCHLINE STA. 281+70



- HOT-MIX ASPHALT, SURFACE REMOVAL 1-1/2"
- HOT-MIX ASPHALT BASE COURSE WIDENING, 12"
- PAVED SHOULDER AND CURB AND GUTTER REMOVAL

FILE NAME =	USER NAME = #USER#	DESIGNED - M.T.V.	REVISED -	STATE OF ILLINOIS DEPARTMENT OF TRANSPORTATION	BUSINESS LOOP 55 PLAN SHEET	F.A.P. RTE.	SECTION	COUNTY	TOTAL SHEETS	SHEET NO.	
#FILE#		DRAWN - S.D.K.	REVISED -			666	09-00015-00 PV	SANGAMON	25	8	
		CHECKED - T.T.P.	REVISED -			CONTRACT NO. 09 9 5 1 3					
		DATE - 11/20/09	REVISED -			ILLINOIS FED. AID PROJECT					
					SCALE: 1"=20'	SHEET NO. 8 OF 25 SHEETS	STA. 275+70 TO STA. 286+35				



SEE SHEET 8 OF 25 SHEETS FOR STATION/OFFSET INFORMATION FROM STATION 284+00 TO 286+35

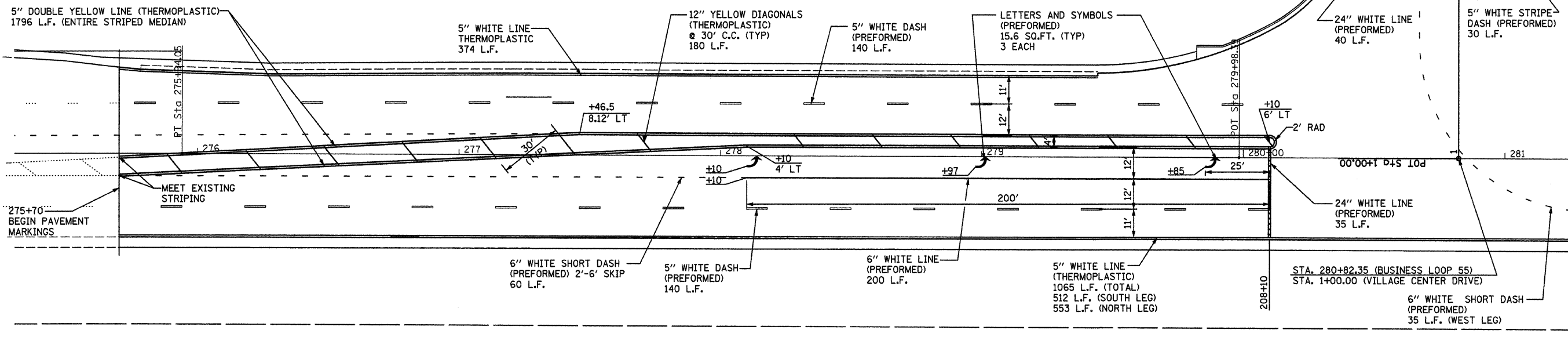
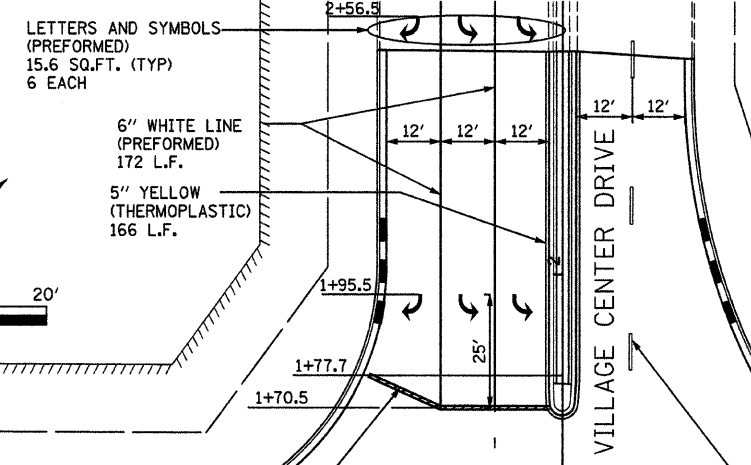
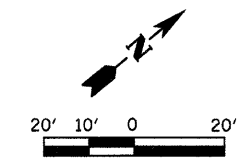
FILE NAME =	USER NAME = #USER#	DESIGNED - M.T.V.	REVISED -	STATE OF ILLINOIS DEPARTMENT OF TRANSPORTATION	LAYOUT AND GRADING PLAN SHEET			F.A.P. RTE. 666	SECTION 09-00015-00 PV	COUNTY SANGAMON	TOTAL SHEETS 25	SHEET NO. 9
#FILE#	PLOT SCALE = #SCALE#	DRAWN - K.M.S.	REVISED -		INTERSECTION CONSTRUCTION (BL-55 & VILLAGE CTR DR), SHERMAN, IL			CONTRACT NO. 09013				
	PLOT DATE = #DATE#	CHECKED - T.T.P.	REVISED -		SCALE: 1"=20'			SHEET NO. 9 OF 25 SHEETS		STA. TO STA.		
		DATE - 11/20/09	REVISED -		ILLINOIS FED. AID PROJECT							

JOB NO. 334-0410-X3 VASCONCELLES ENGINEERING CORP. DESIGN FIRM REGISTRATION NUMBER 184-002107

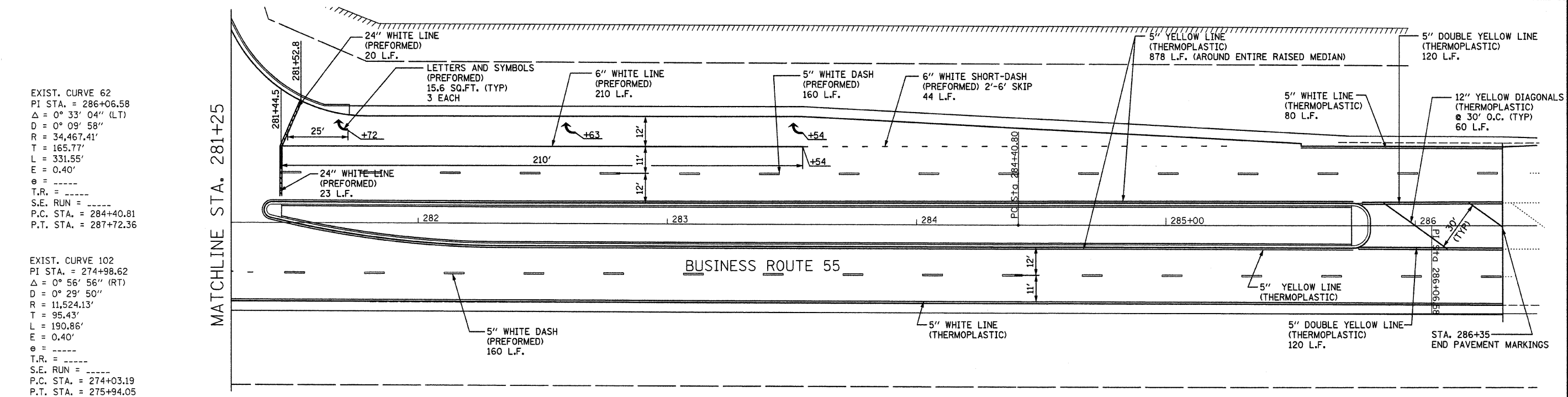
RAISED REFLECTIVE PAVEMENT MARKER REMOVAL		
STATION	LOCATION	EACH
275+70 LT TO 286+35 LT	CENTERLINE	13
275+70 RT TO 277+47 LT	STRIPE MEDIAN	5
275+70 RT TO 277+47 RT	STRIPE MEDIAN	5
275+70 RT TO 286+35 RT	CENTERLINE	14
285+80 LT TO 286+35 LT	STRIPE MEDIAN	2
285+82 RT TO 286+35 RT	STRIPE MEDIAN	2
TOTAL		41

RAISED REFLECTIVE PAVEMENT MARKER REMOVAL		
STATION	LOCATION	EACH
275+70 LT TO 280+10 LT	CENTERLINE	6
275+70 TO 280+00	STRIPE MEDIAN	24
275+70 RT TO 280+10 RT	CENTERLINE	6
278+10 RT TO 280+10 RT	LEFT TURN LANE STRIPE	6
281+45 LT TO 286+35	CENTERLINE	6
281+45 LT TO 283+55	RIGHT TURN LANE STRIPE	6
281+45 RT TO 286+35 RT	CENTERLINE	7
285+82 LT TO 286+35 LT	STRIPE MEDIAN	2
285+82 RT TO 286+35 RT	STRIPE MEDIAN	2
TOTAL		65

NOTES
 1. ALL LETTERS AND SYMBOLS SHALL BE PREFORMED PLASTIC PAVEMENT MARKING, TYPE B - INLAID



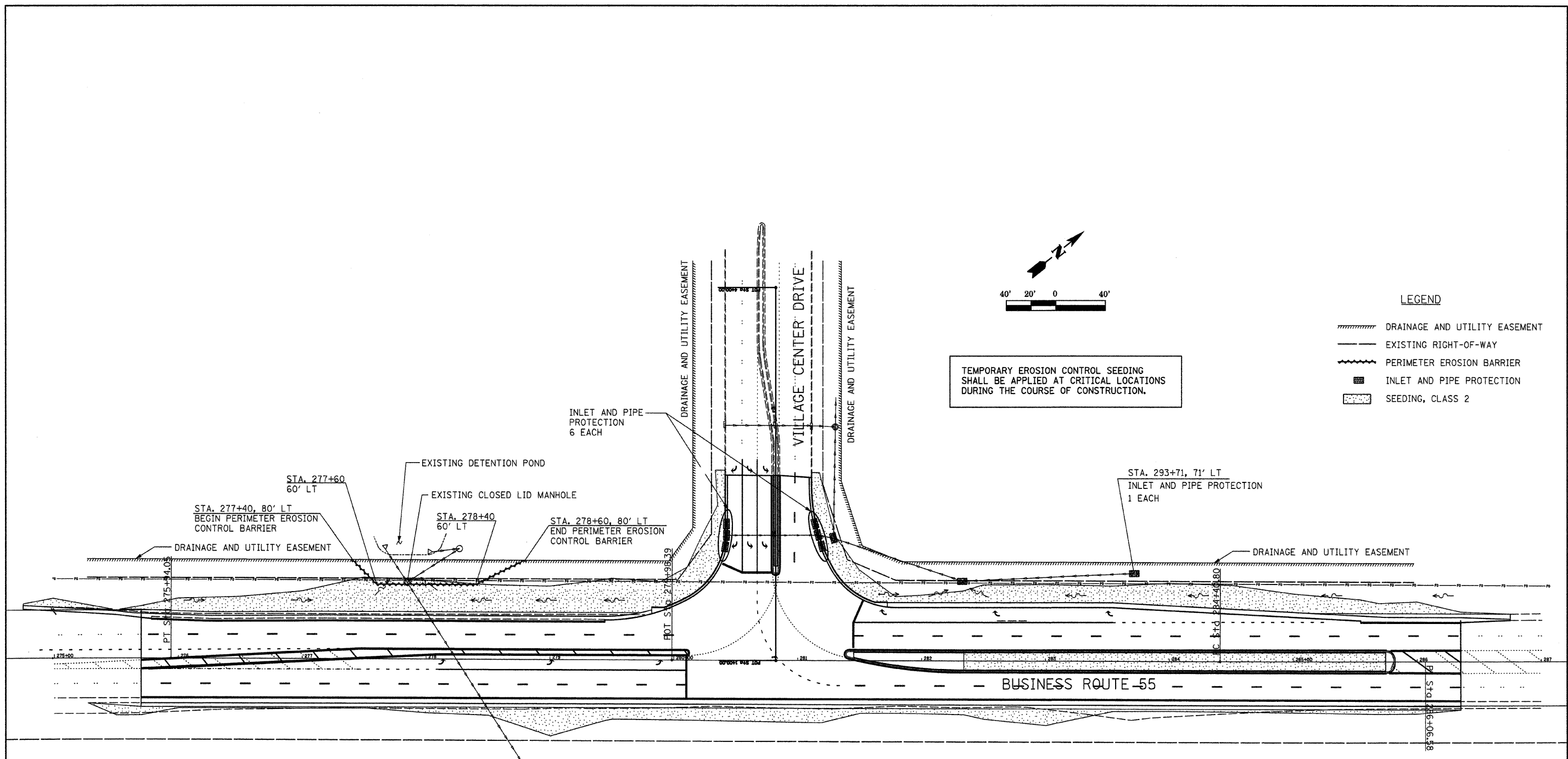
MATCHLINE STA. 281+25



EXIST. CURVE 62
 PI STA. = 286+06.58
 $\Delta = 0^\circ 33' 04''$ (LT)
 $D = 0^\circ 09' 58''$
 $R = 34,467.41'$
 $T = 165.77'$
 $L = 331.55'$
 $E = 0.40'$
 $e = \text{-----}$
 T.R. = -----
 S.E. RUN = -----
 P.C. STA. = 284+40.81
 P.T. STA. = 287+72.36

EXIST. CURVE 102
 PI STA. = 274+98.62
 $\Delta = 0^\circ 56' 56''$ (RT)
 $D = 0^\circ 29' 50''$
 $R = 11,524.13'$
 $T = 95.43'$
 $L = 190.86'$
 $E = 0.40'$
 $e = \text{-----}$
 T.R. = -----
 S.E. RUN = -----
 P.C. STA. = 274+03.19
 P.T. STA. = 275+94.05

FILE NAME =	USER NAME = #USER#	DESIGNED - M.T.V.	REVISED -	STATE OF ILLINOIS DEPARTMENT OF TRANSPORTATION	STRIPING PLAN SHEET		F.A.P. RTE.	SECTION	COUNTY	TOTAL SHEETS	SHEET NO.
#FILE#		DRAWN - K.M.S.	REVISED -		INTERSECTION CONSTRUCTION (BL-55 & VILLAGE CTR DR.), SHERMAN, IL		666	09-00015-00 PV	SANGAMON	25	10
		CHECKED - T.T.P.	REVISED -		SCALE: 1"=20'	SHEET NO. 10 OF 25 SHEETS	STA.	TO STA.	CONTRACT NO. 09513		
		DATE - 11/20/09	REVISED -		ILLINOIS FED. AID PROJECT						



TEMPORARY EROSION CONTROL SEEDING SHALL BE APPLIED AT CRITICAL LOCATIONS DURING THE COURSE OF CONSTRUCTION.

- LEGEND**
- DRAINAGE AND UTILITY EASEMENT
 - EXISTING RIGHT-OF-WAY
 - PERIMETER EROSION BARRIER
 - INLET AND PIPE PROTECTION
 - SEEDING, CLASS 2

EXIST. CURVE 102
 PI STA. = 274+98.62
 $\Delta = 0^\circ 56' 56''$ (RT)
 $D = 0^\circ 29' 50''$
 $R = 11,524.13'$
 $T = 95.43'$
 $L = 190.86'$
 $E = 0.40'$
 $e = \text{-----}$
 $T.R. = \text{-----}$
 $S.E. RUN = \text{-----}$
 $P.C. STA. = 274+03.19$
 $P.T. STA. = 275+94.05$

EXIST. CURVE 62
 PI STA. = 286+06.58
 $\Delta = 0^\circ 33' 04''$ (LT)
 $D = 0^\circ 09' 58''$
 $R = 34,467.41'$
 $T = 165.77'$
 $L = 331.55'$
 $E = 0.40'$
 $e = \text{-----}$
 $T.R. = \text{-----}$
 $S.E. RUN = \text{-----}$
 $P.C. STA. = 284+40.81$
 $P.T. STA. = 287+72.36$

FILE NAME =	USER NAME = #USER#	DESIGNED - M.T.V.	REVISED -
#FILE#		DRAWN - K.M.S.	REVISED -
	PLOT SCALE = #SCALE#	CHECKED - T.T.P.	REVISED -
	PLOT DATE = #DATE#	DATE - 11/20/09	REVISED -

**STATE OF ILLINOIS
 DEPARTMENT OF TRANSPORTATION**

EROSION CONTROL PLAN
INTERSECTION CONSTRUCTION (BL-55 & VILLAGE CTR DR), SHERMAN, IL
 SCALE: 1"=40' SHEET NO. 11 OF 25 SHEETS STA. TO STA.

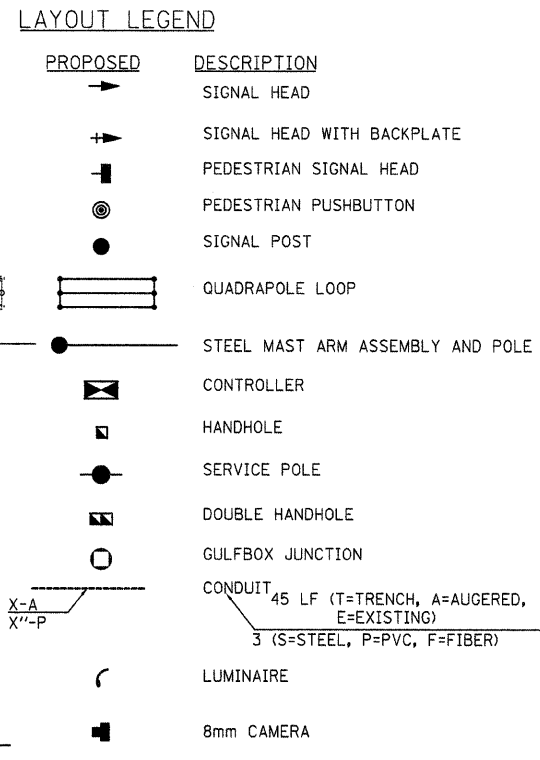
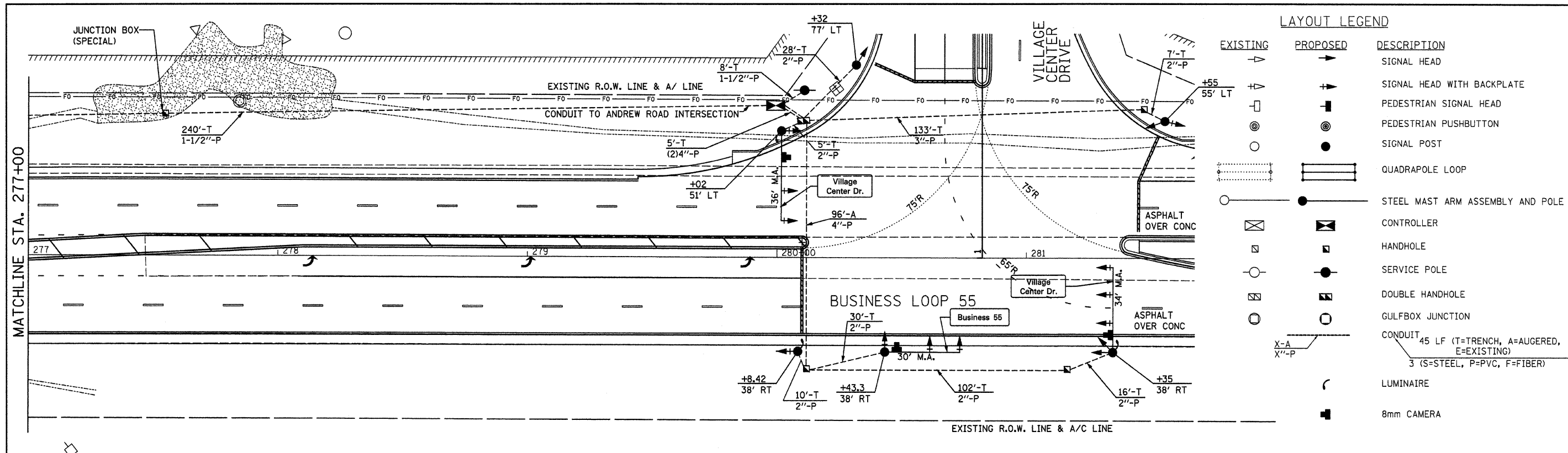
F.A.P. RTE.	SECTION	COUNTY	TOTAL SHEETS	SHEET NO.
666	09-00015-00 PV	SANGAMON	25	11
CONTRACT NO. 93513			ILLINOIS FED. AID PROJECT	

JOB NO. 334-0410-X3 VASCONCELLES ENGINEERING CORP. DESIGN FIRM REGISTRATION NUMBER 184-002107

SUMMARY OF QUANTITIES (CONT.)			
CODE #	PAY ITEM	UNITS	TOTAL
80500100	SERVICE INSTALLATION, TYPE A	EACH	1
81012500	CONDUIT IN TRENCH, 1 1/2" DIA., PVC	FOOT	733
81012600	CONDUIT IN TRENCH, 2" DIA., PVC	FOOT	198
81012800	CONDUIT IN TRENCH, 3" DIA., PVC	FOOT	133
81013000	CONDUIT IN TRENCH, 4" DIA., PVC	FOOT	10
*81021590	CONDUIT, AUGERED 4" DIA., PVC	FOOT	96
*81306100	JUNCTION BOX (SPECIAL)	EACH	2
81400100	HANDHOLE	EACH	3
81400300	DOUBLE HANDHOLE	EACH	1
81900200	TRENCH AND BACKFILL FOR ELECTRICAL WORK	FOOT	1059
82103250	LUMINAIRE, SODIUM VAPOR, HORIZONTAL MOUNT, PHOTO-CELL CONTROL, 250 WATT	EACH	3
85700200	FULL-ACTUATED CONTROLLER AND TYPE IV CABINET	EACH	1
*86200200	UNINTERRUPTIBLE POWER SUPPLY, STANDARD	EACH	1
86400100	TRANSCEIVER - FIBER OPTIC	EACH	2
87100110	FIBER OPTIC CABLE IN CONDUIT, NO. 62.5/125, 6F	FOOT	897
87301225	ELECTRIC CABLE IN CONDUIT, SIGNAL NO. 14 3C	FOOT	547
87301245	ELECTRIC CABLE IN CONDUIT, SIGNAL NO. 14 5C	FOOT	969
87301255	ELECTRIC CABLE IN CONDUIT, SIGNAL NO. 14 7C	FOOT	950
87301815	ELECTRIC CABLE IN CONDUIT, SERVICE, NO. 6 3C	FOOT	17
87502700	TRAFFIC SIGNAL POST, ALUMINUM 16 FT.	EACH	3
87702880	STEEL COMBINATION MAST ARM ASSEMBLY AND POLE 30 FT.	EACH	1
87702900	STEEL COMBINATION MAST ARM ASSEMBLY AND POLE 34 FT.	EACH	1
87702910	STEEL COMBINATION MAST ARM ASSEMBLY AND POLE 36 FT.	EACH	1
87800100	CONCRETE FOUNDATION, TYPE A	FOOT	9
87800150	CONCRETE FOUNDATION, TYPE C	FOOT	3
87800400	CONCRETE FOUNDATION, TYPE E 30-INCH DIAMETER	FOOT	40
87900200	DRILL EXISTING HANDHOLE	EACH	1
88040070	SIGNAL HEAD, POLYCARBONATE, LED, 1-FACE, 3-SECTION, BRACKET MOUNTED	EACH	1
88040090	SIGNAL HEAD, POLYCARBONATE, LED, 1-FACE, 3-SECTION, MAST ARM MOUNTED	EACH	6
88040150	SIGNAL HEAD, POLYCARBONATE, LED, 1-FACE, 5-SECTION, BRACKET MOUNTED	EACH	3
88040160	SIGNAL HEAD, POLYCARBONATE, LED, 1-FACE, 5-SECTION, MAST ARM MOUNTED	EACH	1
88040230	SIGNAL HEAD, POLYCARBONATE, LED, 2-FACE, 3-SECTION, BRACKET MOUNTED	EACH	1
88040290	SIGNAL HEAD, POLYCARBONATE, LED, 2-FACE, 5-SECTION, BRACKET MOUNTED	EACH	1
88200100	TRAFFIC SIGNAL BACKPLATE	EACH	11
*X0320872	VIDEO VEHICLE DETECTION SYSTEM	FOOT	1
*X0323153	ELECTRIC CABLE IN CONDUIT, GROUND, NO. 6 1C (GREEN)	FOOT	540
*X0326473	ELECTRIC CABLE IN CONDUIT, NO. 14 3C FOR VIDEO	FOOT	610
*X8170245	ELECTRIC CABLE IN CONDUIT, 600V (XLP-TYPE USE) 3-1/C NO. 12	FOOT	610

*SPECIAL PROVISION

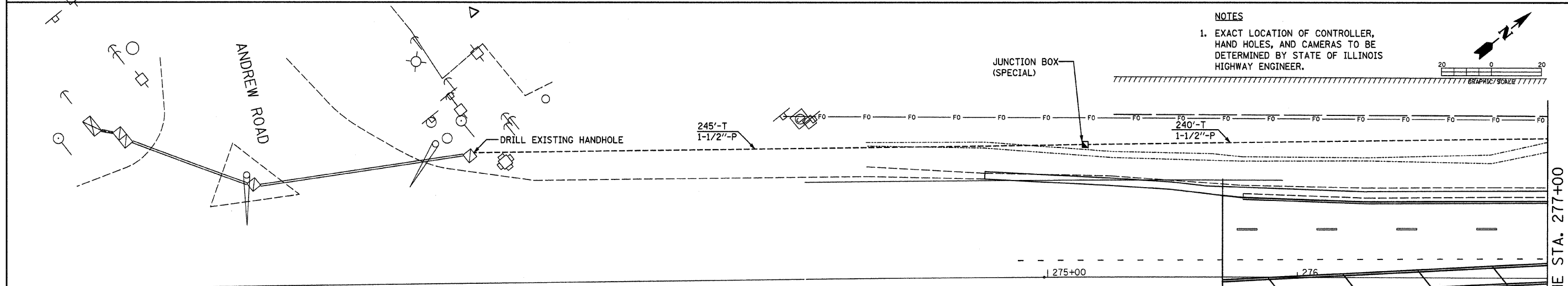
FILE NAME =	USER NAME = #USER#	DESIGNED - M.T.V.	REVISED -	STATE OF ILLINOIS DEPARTMENT OF TRANSPORTATION	TRAFFIC SIGNAL SCHEDULE				F.A.P. RTE.	SECTION	COUNTY	TOTAL SHEETS	SHEET NO.
#FILE#		DRAWN - K.M.W.	REVISED -		666	09-00015-00 PV	SANGAMON	25	12				
PLOT SCALE = #SCALE#		CHECKED - T.T.P.	REVISED -		CONTRACT NO. 93513								
PLOT DATE = #DATE#		DATE - 11/20/09	REVISED -		SCALE:	SHEET NO. 12 OF 25 SHEETS	STA.	TO STA.	ILLINOIS FED. AID PROJECT				



NOTES

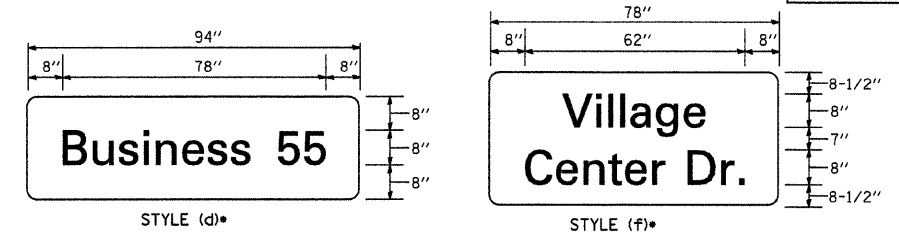
- EXACT LOCATION OF CONTROLLER, HAND HOLES, AND CAMERAS TO BE DETERMINED BY STATE OF ILLINOIS HIGHWAY ENGINEER.

GRAPHIC SCALE: 1" = 20'

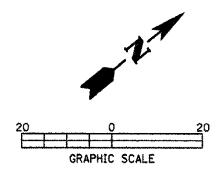


SIGN PANEL DETAILS

SIGN PANEL, TYPE 2 DIMENSIONS/SCHEDULE									
QUANTITY EACH	FORMAT	LETTER SIZE		LOCATION	SIGN SIZE			SIGN PANEL	
		UC	LC		WIDTH	HEIGHT	SQ. FT.	STYLE (d)	STYLE (f)
2	Village Center Dr.	8D	6D	NE & SW QUAD	78"	40"	21.7		43.4
1	Business 55	8D	6D	SE QUAD	94"	24"	15.7	15.7	
*STYLE (d) & (f) SIGN PANELS PER T20016-02								TOTAL	59.1 SQ. FT.

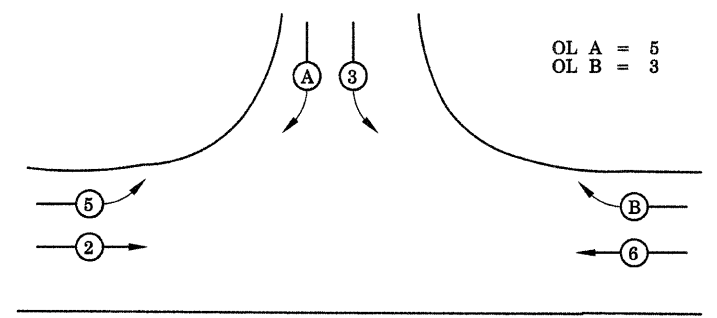


FILE NAME =	USER NAME = #USER#	DESIGNED - M.T.V.	REVISED -	STATE OF ILLINOIS DEPARTMENT OF TRANSPORTATION	SIGNAL PLAN			F.A.P. RTE. 666	SECTION 09-00015-00 PV	COUNTY SANGAMON	TOTAL SHEETS 25	SHEET NO. 13
#FILEL#	PLOT SCALE = #SCALE#	DRAWN - K.M.S.	REVISED -		INTERSECTION CONSTRUCTION (BL-55 & VILLAGE CTR DR), SHERMAN, IL			SCALE: 1"=20'		SHEET NO. 13 OF 25 SHEETS	STA. TO STA.	CONTRACT NO. 09-0513
	PLOT DATE = #DATE#	CHECKED - T.T.P.	REVISED -		ILLINOIS FED. AID PROJECT							
		DATE - 11/20/09	REVISED -									

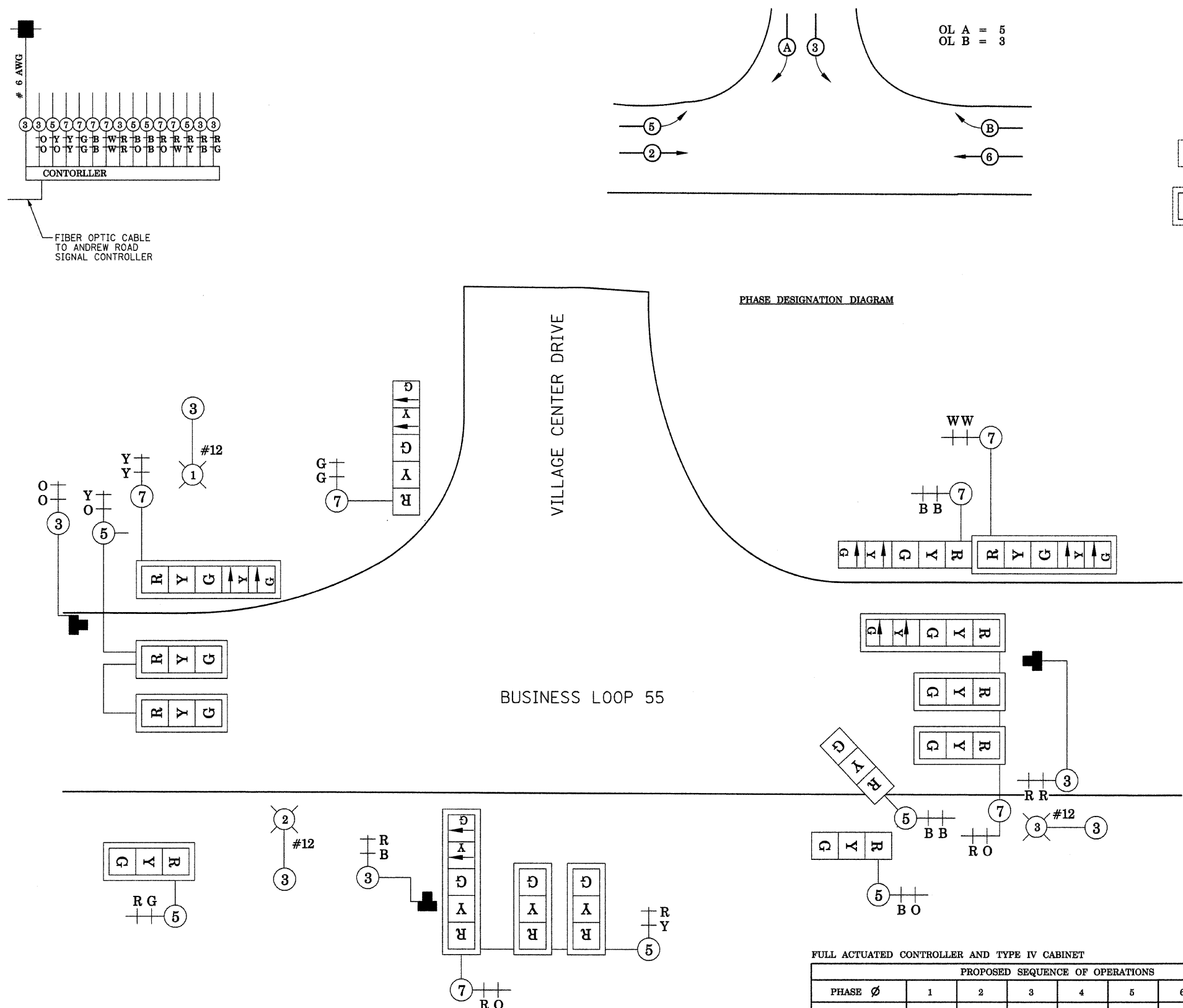


CABLE LEDGEND

EXISTING	PROPOSED	DESCRIPTION
		SIGNAL FACE
		SIGNAL FACE WITH BACKPLATE
		PEDESTRIAN SIGNAL FACE (SYMBOL TYPE FACE)
		PROGRAMMED SIGNAL SECTION
		SIGNAL SECTION WITH LOUVRES
		DUAL-INDICATION SIGNAL SECTION
		ELECTRIC CABLE IDENTIFIER TAPE CODES (R=RED W=WHITE O=ORANGE Y=YELLOW G=GREEN B=BLUE V=VIOLET)
		ELECTRIC CABLE DENOTING NUMBER OF CONDUCTORS
		COAX CABLE
		LUMINAIRIE
		8mm CAMERA



PHASE DESIGNATION DIAGRAM



FULL ACTUATED CONTROLLER AND TYPE IV CABINET

PROPOSED SEQUENCE OF OPERATIONS								
PHASE Ø	1	2	3	4	5	6	7	8
MOVEMENT	NOT USED	→	↪	NOT USED	↩	←	NOT USED	NOT USED
SIMULTANEOUS MOVEMENTS PERMITTED	NOT USED	5 OR 6	OL B	NOT USED	OL A	2	NOT USED	NOT USED

FILE NAME = #FILE#	USER NAME = #USER#	DESIGNED - M.T.V.	REVISED -	STATE OF ILLINOIS DEPARTMENT OF TRANSPORTATION	CABLE PLAN			F.A.P. RTE. 666	SECTION 09-00015-00 PV	COUNTY SANGAMON	TOTAL SHEETS 25	SHEET NO. 14
					INTERSECTION CONSTRUCTION (BL-55 & VILLAGE CTR DR), SHERMAN, IL					CONTRACT NO. 9513		
					SCALE: 1"=20'			SHEET NO. 14 OF 25 SHEETS		ILLINOIS FED. AID PROJECT		
					STA. TO STA.							

STAGE 1

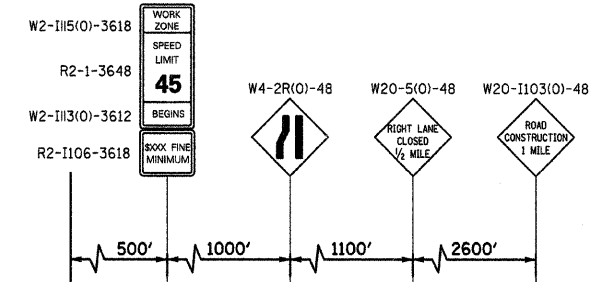
1. INSTALL TRAFFIC PROTECTION DEVICES.
2. PERFORM ALL EARTHWORK OPERATIONS FOR VILLAGE CENTER DRIVE AND RIGHT TURN LANE ON S.B. B.L. 55.
3. INSTALL STORM SEWER ON VILLAGE CENTER DRIVE.
4. REMOVE HEADWALLS LOCATED ALONG B.L. 55.
5. MILL OUTSIDE LANES OF B.L. 55.
6. REMOVE EXISTING PAVED SHOULDER ALONG OUTSIDE EDGES OF S.B. AND N.B. LANES OF B.L. 55 AND EXCAVATE FOR HOT-MIX ASPHALT SHOULDER PLACEMENT ALONG OUTSIDE EDGES OF S.B. AND N.B. LANES OF B.L. 55.
7. PLACE ALL SUB-BASE GRANULAR MATERIALS FOR VILLAGE CENTER DRIVE AND RIGHT TURN LANE ON S.B. B.L. 55.
8. CONSTRUCT CURB AND GUTTER AND MEDIAN PAVEMENT FOR VILLAGE CENTER DRIVE.
9. PLACE HOT-MIX ASPHALT BASE COURSES FOR VILLAGE CENTER DRIVE AND RIGHT TURN LANE ON S.B. B.L. 55.
10. PLACE HOT-MIX ASPHALT SHOULDERS TO WITHIN 2" OF FINISHED GRADE ELEVATION OF S.B. AND N.B. B.L. 55.
11. BACKFILL AND GRADE EARTH BEHIND NEW CURB AND GUTTER AND NEW HOT-MIX ASPHALT SHOULDER.
12. INSTALL SIGNAL FOUNDATIONS AND CONDUITS.

LEGEND

- ↑ ARROW BOARD
- ↓ SIGN
- ↑ DIRECTION INDICATOR BARRICADE WITH STEADY BURN MONODIRECTIONAL LIGHT
- I TYPE II BARRICADE, DRUM, OR VERTICAL BARRICADE
- ↓ TYPE II BARRICADE, DRUM OR VERTICAL BARRICADE WITH STEADY BURN MONODIRECTIONAL LIGHT
- TT TYPE III BARRICADE WITH ROAD CLOSED SIGN
- CONSTRUCTION AREA

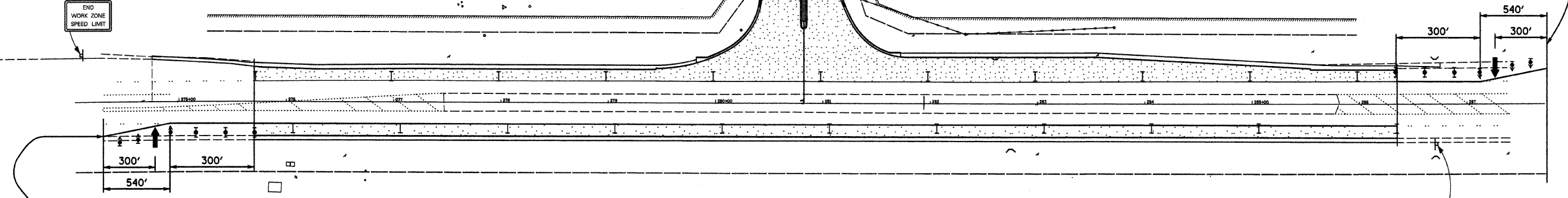
VILLAGE CENTER DRIVE WILL REMAIN CLOSED THROUGH STAGE 4 CONSTRUCTION

UTILIZE STANDARD BLR-21 TO CLOSE VILLAGE CENTER DRIVE



G20-1103(O)-3660

END WORK ZONE SPEED LIMIT

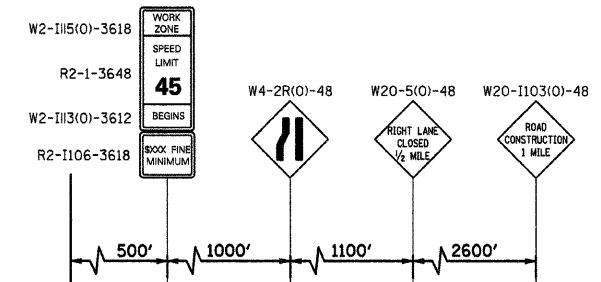


STAGE 2

1. RELOCATE TRAFFIC CONTROL DEVICES.
2. EXCAVATE EXISTING EARTH MEDIAN ON B.L. 55.
3. MILL INSIDE LANES OF B.L. 55.
4. REMOVE EXISTING MEDIAN CURB AND GUTTER ON B.L. 55.
5. PLACE ALL SUB-BASE GRANULAR MATERIALS WITHIN EXISTING PAVEMENT LIMITS FOR LEFT TURN LANE ON N.B. B.L. 55.
6. CONSTRUCT CURB AND GUTTER AND MEDIAN PAVEMENT FOR RAISED MEDIAN FOR B.L. 55.
7. PLACE HOT-MIX ASPHALT BASE COURSES FOR LEFT TURN LANE ON N.B. B.L. 55.
8. PLACE EARTH BACKFILL WITHIN LIMITS OF RAISED MEDIAN ON B.L. 55.

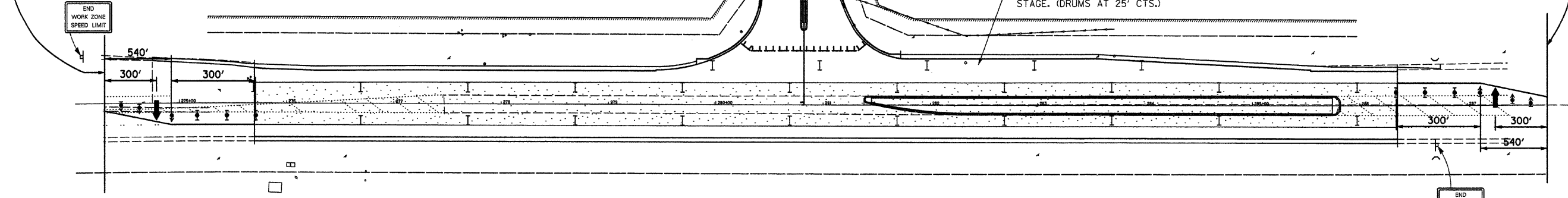
VILLAGE CENTER DRIVE WILL REMAIN CLOSED THROUGH STAGE 4 CONSTRUCTION

UTILIZE STANDARD BLR-21 TO CLOSE VILLAGE CENTER DRIVE



G20-1103(O)-3660

END WORK ZONE SPEED LIMIT



G20-1103(O)-3660

END WORK ZONE SPEED LIMIT

FILE NAME = #FILE#

USER NAME = #USER#
 PLOT SCALE = #SCALE#
 PLOT DATE = #DATE#

DESIGNED - T.T.P.
 DRAWN - J.T.F.
 CHECKED - T.T.P.
 DATE - 11/20/09

REVISED -
 REVISED -
 REVISED -
 REVISED -

STATE OF ILLINOIS
 DEPARTMENT OF TRANSPORTATION

MAINTENANCE OF TRAFFIC PLAN SHEET 1
 INTERSECTION CONSTRUCTION (BL-55 & VILLAGE CTR DR), SHERMAN, IL

SCALE: 1"=50' SHEET NO. 15 OF 25 SHEETS STA. TO STA.

F.A.P. RTE. 666	SECTION 09-00015-00-PV	COUNTY SANGAMON	TOTAL SHEETS 25	SHEET NO. 15
CONTRACT NO. 93513			ILLINOIS FED. AID PROJECT	

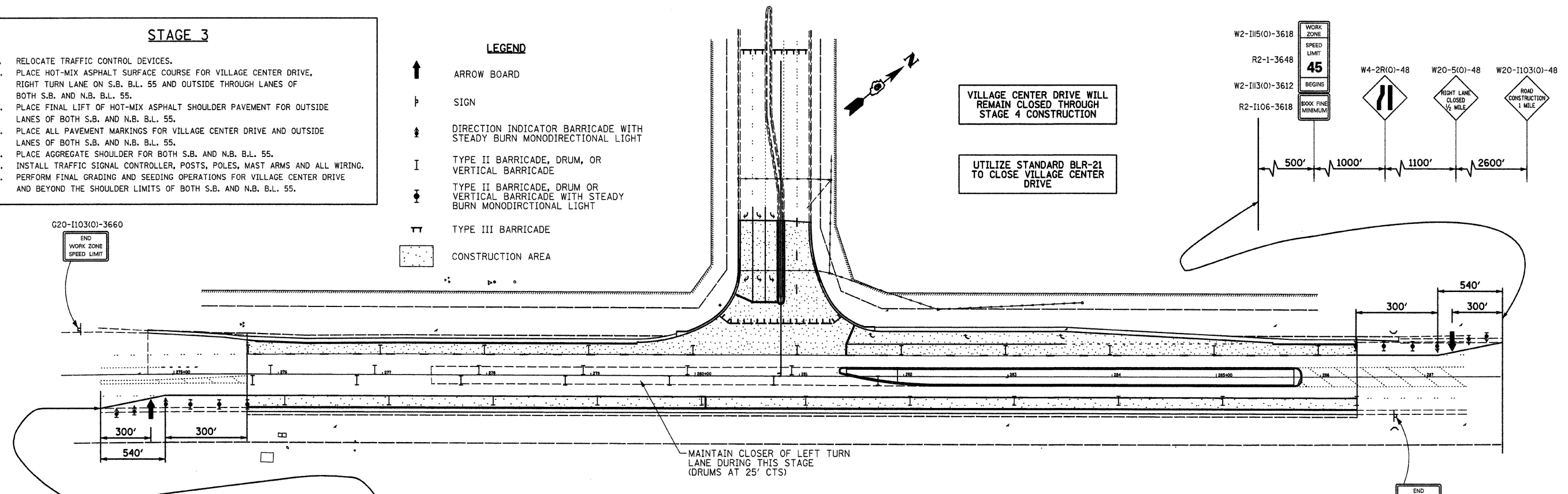
JOB NO. 334-010-X3 VASCONCELLES ENGINEERING CORP. DESIGN FIRM REGISTRATION NUMBER 184-002107

STAGE 3

1. RELOCATE TRAFFIC CONTROL DEVICES.
2. PLACE HOT-MIX ASPHALT SURFACE COURSE FOR VILLAGE CENTER DRIVE, RIGHT TURN LANE ON S.B. B.L. 55 AND OUTSIDE THROUGH LANES OF BOTH S.B. AND N.B. B.L. 55.
3. PLACE FINAL LIFT OF HOT-MIX ASPHALT SHOULDER PAVEMENT FOR OUTSIDE LANES OF BOTH S.B. AND N.B. B.L. 55.
4. PLACE ALL PAVEMENT MARKINGS FOR VILLAGE CENTER DRIVE AND OUTSIDE LANES OF BOTH S.B. AND N.B. B.L. 55.
5. PLACE AGGREGATE SHOULDER FOR BOTH S.B. AND N.B. B.L. 55.
6. INSTALL TRAFFIC SIGNAL CONTROLLER, POSTS, POLES, MAST ARMS AND ALL WIRING.
7. PERFORM FINAL GRADING AND SEEDING OPERATIONS FOR VILLAGE CENTER DRIVE AND BEYOND THE SHOULDER LIMITS OF BOTH S.B. AND N.B. B.L. 55.

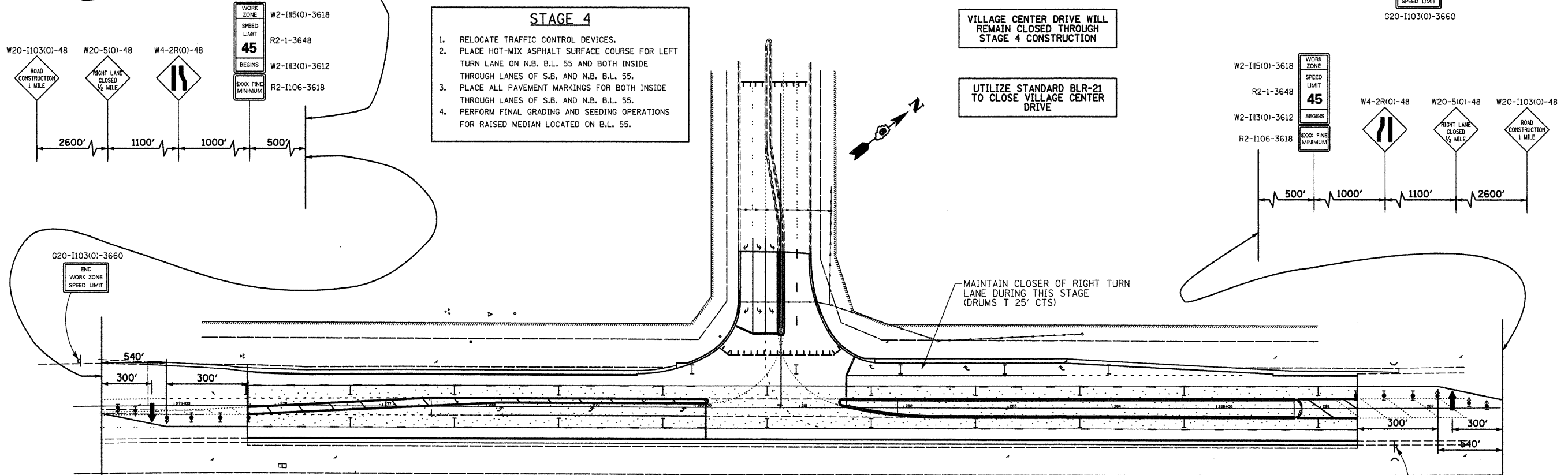
LEGEND

- ↑ ARROW BOARD
- ↓ SIGN
- ↕ DIRECTION INDICATOR BARRICADE WITH STEADY BURN MONODIRECTIONAL LIGHT
- I TYPE II BARRICADE, DRUM, OR VERTICAL BARRICADE
- ⊥ TYPE II BARRICADE, DRUM OR VERTICAL BARRICADE WITH STEADY BURN MONODIRECTIONAL LIGHT
- ⊥ TYPE III BARRICADE
- ▨ CONSTRUCTION AREA



STAGE 4

1. RELOCATE TRAFFIC CONTROL DEVICES.
2. PLACE HOT-MIX ASPHALT SURFACE COURSE FOR LEFT TURN LANE ON N.B. B.L. 55 AND BOTH INSIDE THROUGH LANES OF S.B. AND N.B. B.L. 55.
3. PLACE ALL PAVEMENT MARKINGS FOR BOTH INSIDE THROUGH LANES OF S.B. AND N.B. B.L. 55.
4. PERFORM FINAL GRADING AND SEEDING OPERATIONS FOR RAISED MEDIAN LOCATED ON B.L. 55.



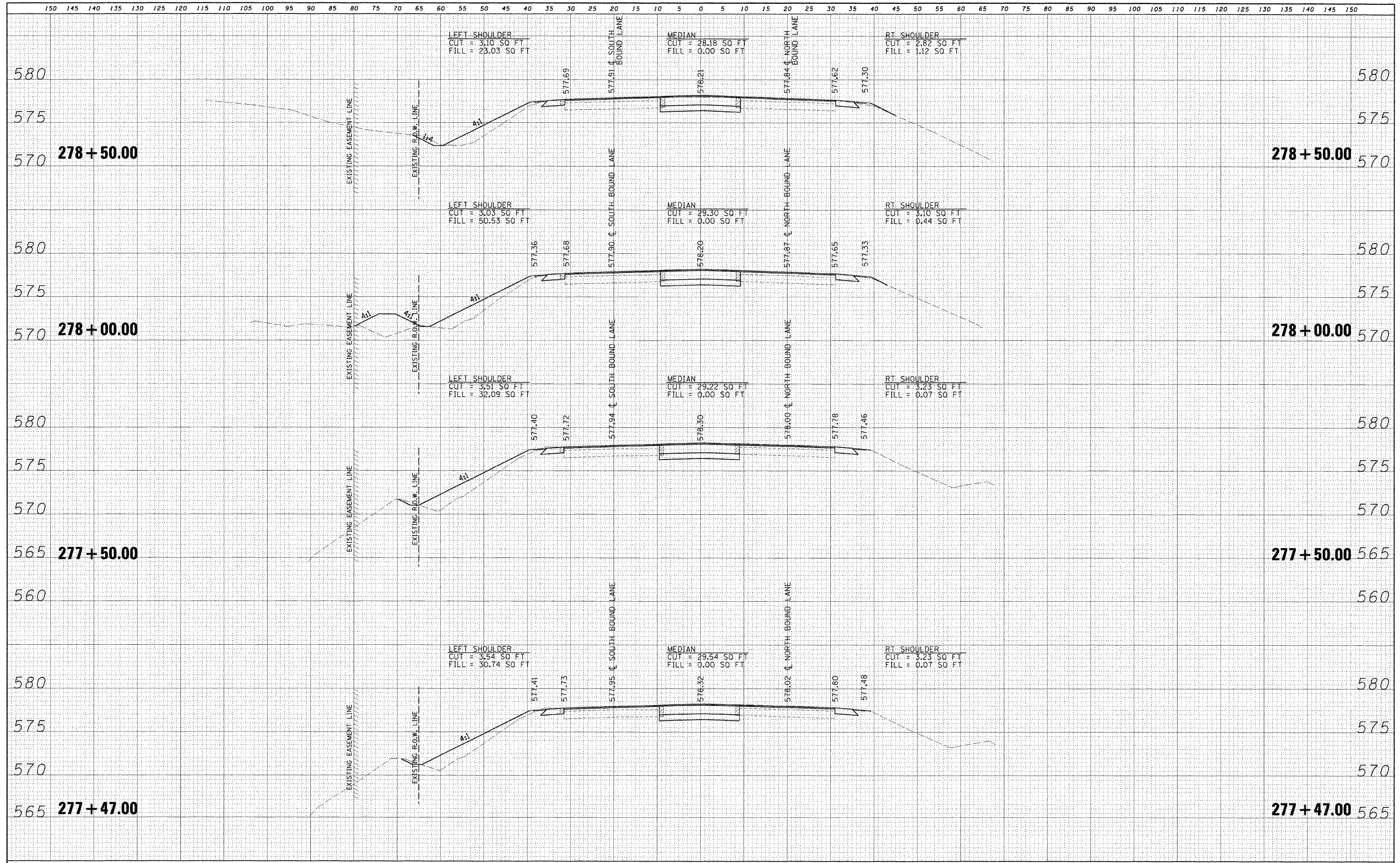
STAGE 5

1. REMOVE TRAFFIC CONTROL DEVICES AND OPEN IMPROVEMENTS TO TRAFFIC.

FILE NAME =	USER NAME = #USER#	DESIGNED - T.T.P.	REVISED -	STATE OF ILLINOIS DEPARTMENT OF TRANSPORTATION	MAINTENANCE OF TRAFFIC PLAN SHEET 1			F.A.P. RTE. 666	SECTION 09-0015-00-PV	COUNTY SANGAMON	TOTAL SHEETS 25	SHEET NO. 16	
#FILEL#		DRAWN - J.T.F.	REVISED -		INTERSECTION CONSTRUCTION (BL-55 & VILLAGE CTR DR), SHERMAN, IL								
		CHECKED - T.T.P.	REVISED -		SCALE: 1"=50'			SHEET NO. 16 OF 25 SHEETS		STA. TO STA.		CONTRACT NO. 9351	
		DATE - 11/20/09	REVISED -		G20-1103(O)-3660			ILLINOIS FED. AID PROJECT					
					G20-1103(O)-3660			JOB NO. 334-0410-X3 VASCONCELLES ENGINEERING CORP. - DESIGN FIRM REGISTRATION NUMBER 184-002101					

FINAL SURVEY	REVISIONS	DATE
NOTE BOOK	PLOTTED	BY
NO.	TEMPLATE	
	AREAS CHECKED	
	AREAS CHECKED	

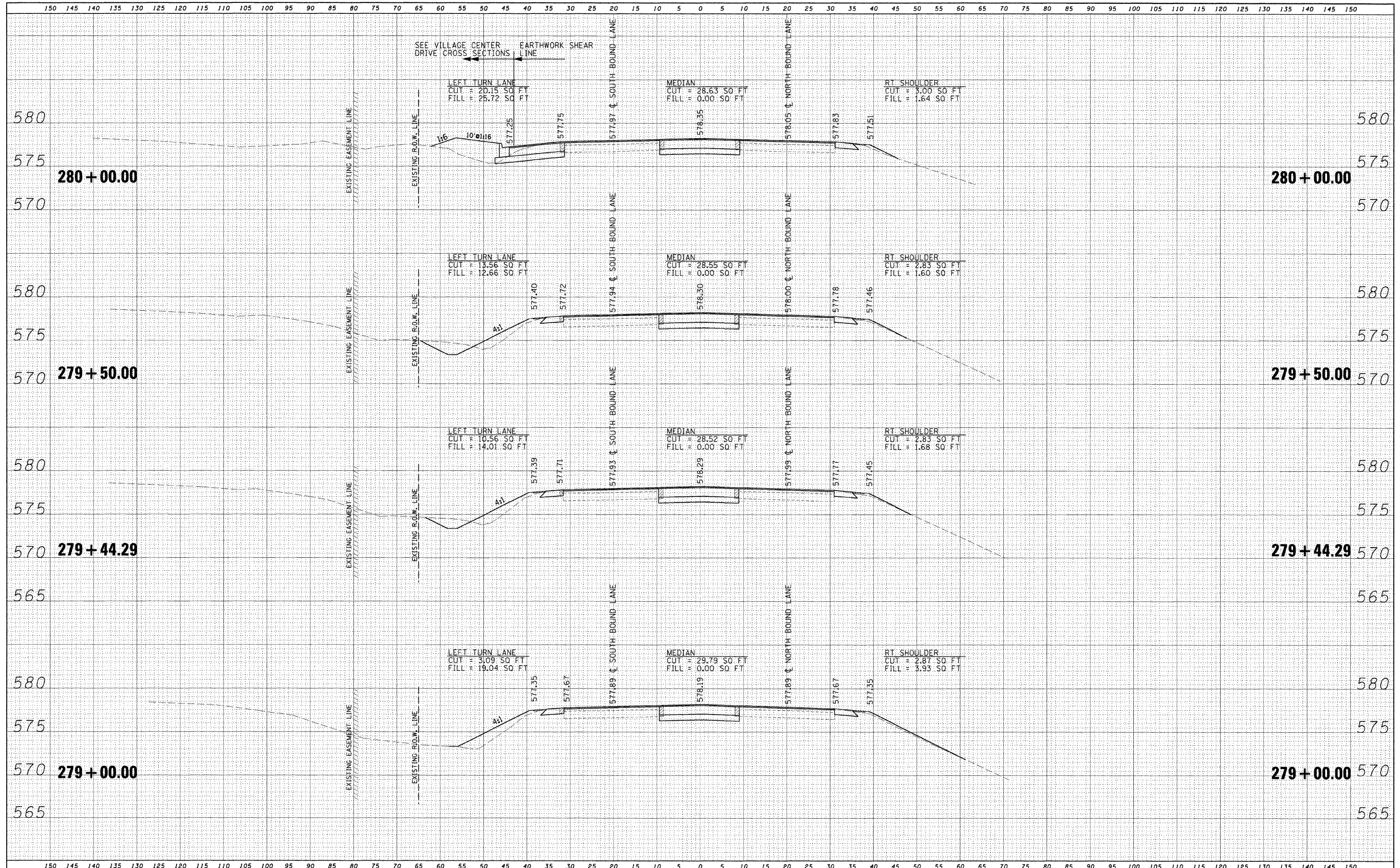
ORIGINAL SURVEY	REVISIONS	DATE
NOTE BOOK	PLOTTED	BY
NO.	TEMPLATE	
	AREAS CHECKED	
	AREAS CHECKED	



FILE NAME = #FILEL#	USER NAME = #USER#	DESIGNED - M.T.V.	REVISED -	STATE OF ILLINOIS DEPARTMENT OF TRANSPORTATION PROPOSED CROSS SECTIONS BUSINESS LOOP I-55 INTERSECTION CONSTRUCTION (BL-55 & VILLAGE CTR DR), SHERMAN, IL SCALE: 1"=10' SHEET NO. 19 OF 25 SHEETS STA. 277+47.00 TO STA. 278+50.00	F.A.P. RTE. 666	SECTION 09-00015-00 PV	COUNTY SANGAMON	TOTAL SHEETS 25	SHEET NO. 19
	PLOT SCALE = #SCALE#	DRAWN - S.D.K.	REVISED -		CONTRACT NO. 93513				
	PLOT DATE = #DATE#	CHECKED - T.T.P.	REVISED -		ILLINOIS FED. AID PROJECT				
		DATE - 11/20/09	REVISED -						

FINAL SURVEY	CHECKED	DATE
NOTE BOOK	PLOTTED	BY
NO.	TEMPLATE	
	AREAS CHECKED	

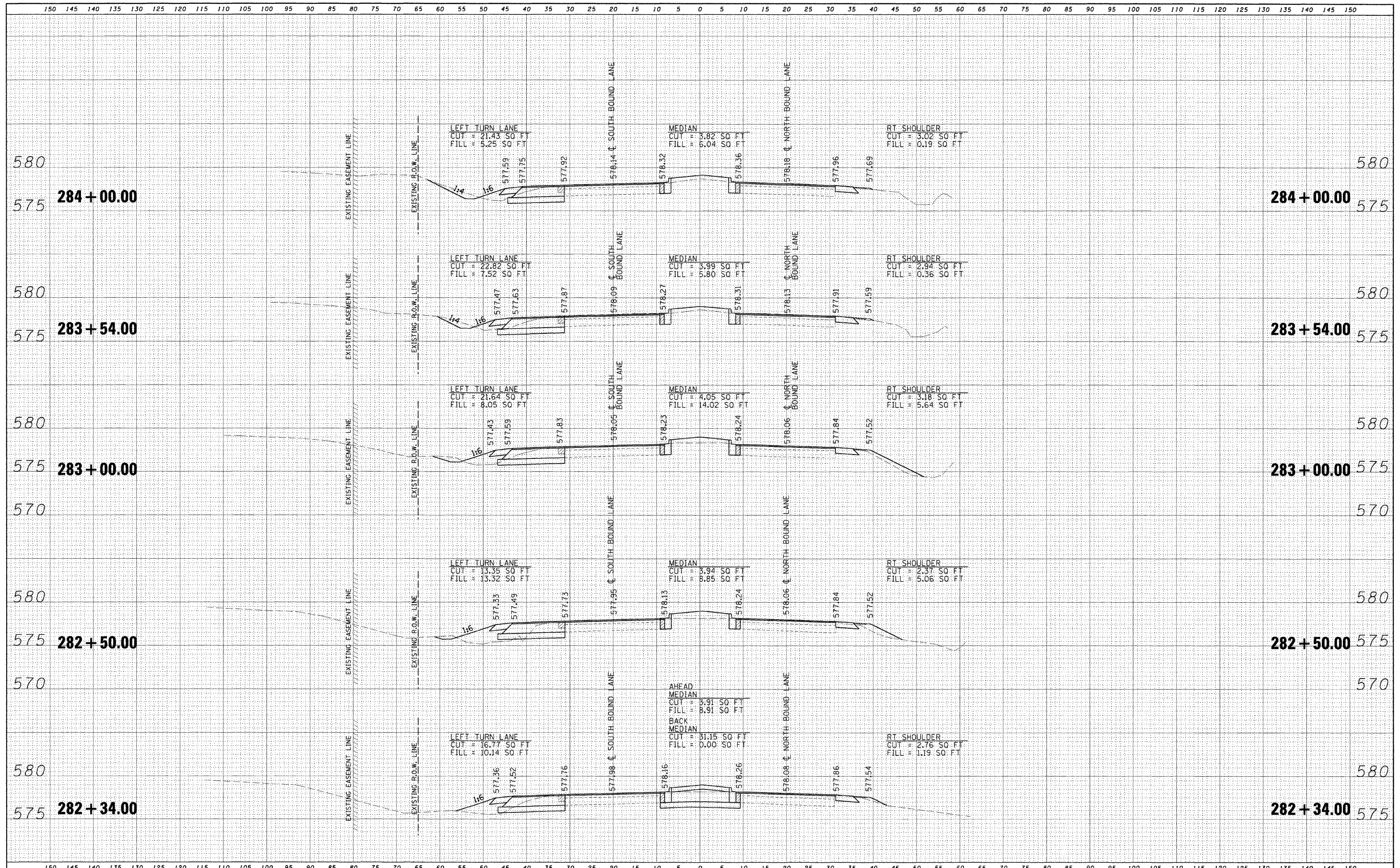
ORIGINAL SURVEY	CHECKED	DATE
NOTE BOOK	PLOTTED	BY
NO.	TEMPLATE	
	AREAS CHECKED	



FILE NAME =	USER NAME = #USER#	DESIGNED - M.T.V.	REVISED -	STATE OF ILLINOIS DEPARTMENT OF TRANSPORTATION	PROPOSED CROSS SECTIONS BUSINESS LOOP I-55 INTERSECTION CONSTRUCTION (BL-55 & VILLAGE CTR DR), SHERMAN, IL	F.A.P. RTEL	SECTION	COUNTY	TOTAL SHEETS	SHEET NO.	
#FILE#	PLOT SCALE = #SCALE#	DRAWN - S.D.K.	REVISED -			666	09-00015-00 PV	SANGAMON	25	20	
	PLOT DATE = #DATE#	CHECKED - T.T.P.	REVISED -			CONTRACT NO. 93513					
		DATE - 11/20/09	REVISED -			ILLINOIS FED. AID PROJECT					

FINAL SURVEY	SURVEYED	DATE
NOTE BOOK	PLOTTED	BY
NO.	TEMPLATE	
	AREAS CHECKED	
	AREAS CHECKED	

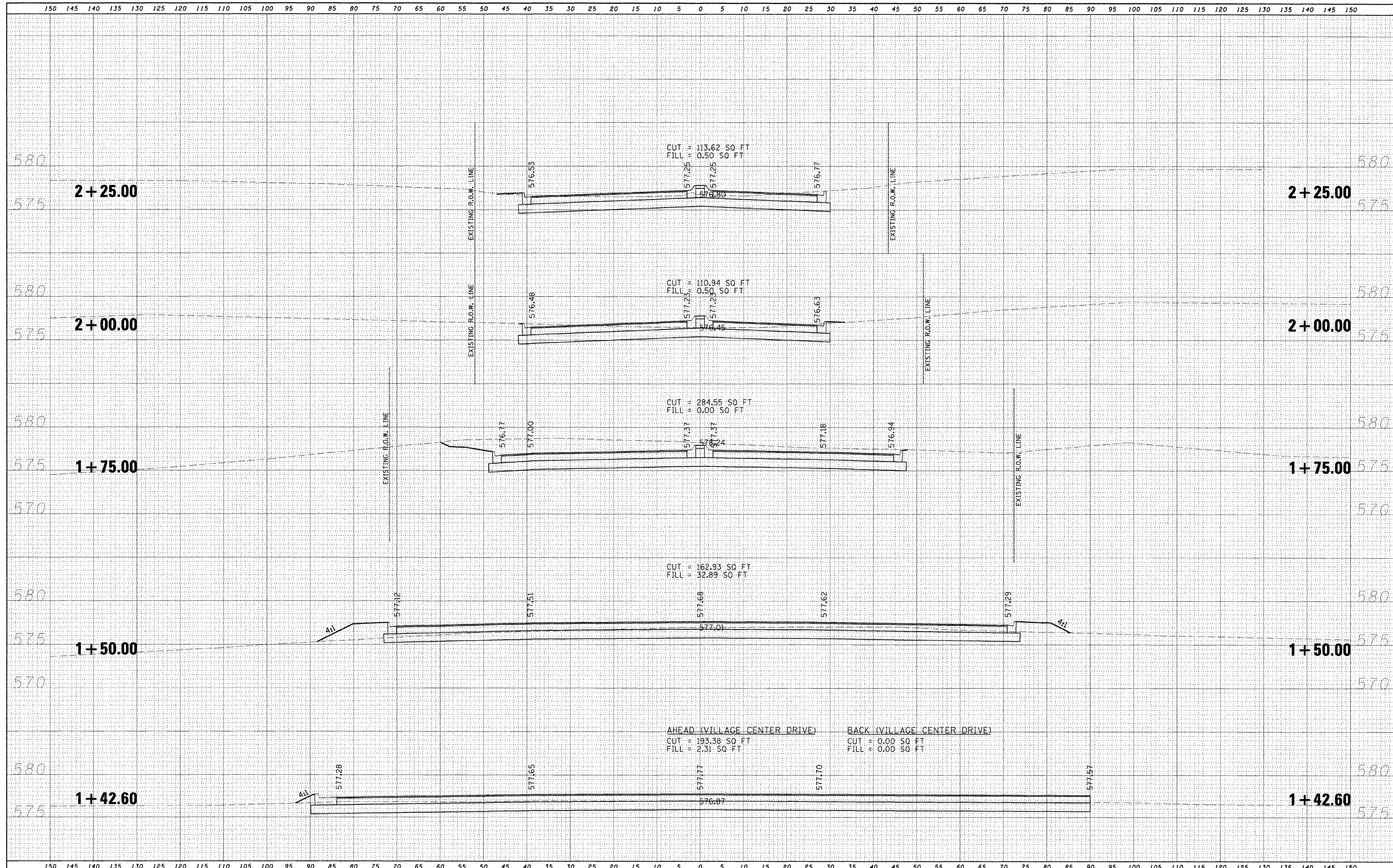
ORIGINAL SURVEY	SURVEYED	DATE
NOTE BOOK	PLOTTED	BY
NO.	TEMPLATE	
	AREAS CHECKED	
	AREAS CHECKED	



FILE NAME = #FILE#	USER NAME = #USER#	DESIGNED - M.T.V.	REVISED -	STATE OF ILLINOIS DEPARTMENT OF TRANSPORTATION PROPOSED CROSS SECTIONS BUSINESS LOOP I-55 INTERSECTION CONSTRUCTION (BL-55 & VILLAGE CTR DR), SHERMAN, IL SCALE: 1"=10' SHEET NO. 22 OF 25 SHEETS STA. 282+34.00 TO STA. 284+00.00	F.A.P. RTE. 66	SECTION 09-00015-00 PV	COUNTY SANGAMON	TOTAL SHEETS 25	SHEET NO. 22
	PLOT SCALE = #SCALE#	DRAWN - S.D.K.	REVISED -		CONTRACT NO. 93513				
	PLOT DATE = #DATE#	CHECKED - T.T.P.	REVISED -		ILLINOIS FED. AID PROJECT				
		DATE - 11/20/09	REVISED -						

FINAL SURVEY	CHECKED	DATE
NOTE BOOK	PLOTTED	BY
NO.	TEMPLATE	
	AREAS	
	CHECKED	

ORIGINAL SURVEY	CHECKED	DATE
NOTE BOOK	PLOTTED	BY
NO.	TEMPLATE	
	AREAS	
	CHECKED	

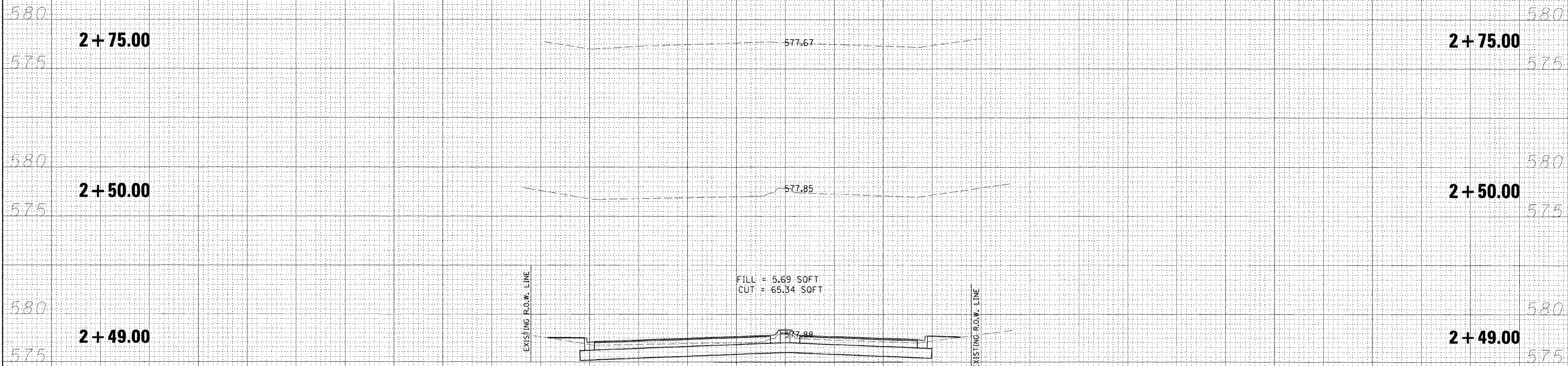


FILE NAME = #FILEL#	USER NAME = #USER#	DESIGNED - M.T.V.	REVISED -	STATE OF ILLINOIS DEPARTMENT OF TRANSPORTATION	PROPOSED CROSS SECTIONS, VILLAGE CENTER DRIVE INTERSECTION CONSTRUCTION (BL-55 & VILLAGE CTR DR), SHERMAN, IL			F.A.P. R.T.E. 666	SECTION 09-00015-00-PV	COUNTY SANGAMON	TOTAL SHEETS 25	SHEET NO. 24
	PLOT SCALE = #SCALE#	DRAWN - S.D.K.	REVISED -		SCALE:	SHEET NO. 24 OF 25 SHEETS	STA. 1+42.60	TO STA. 2+25.00	CONTRACT NO. 93513			
	PLOT DATE = #DATE#	CHECKED - T.T.P.	REVISED -		ILLINOIS FED. AID PROJECT							
		DATE - 11/20/09	REVISED -									

150 145 140 135 130 125 120 115 110 105 100 95 90 85 80 75 70 65 60 55 50 45 40 35 30 25 20 15 10 5 0 5 10 15 20 25 30 35 40 45 50 55 60 65 70 75 80 85 90 95 100 105 110 115 120 125 130 135 140 145 150

DATE	BY	SUBMITTED	DATE
		PLOTTED	
		TEMPLATE	
		AREAS	CHECKED
		AREAS	CHECKED
FINL			
SURVEY			
NOTE BOOK			
NO.			

DATE	BY	SUBMITTED	DATE
		PLOTTED	
		TEMPLATE	
		AREAS	CHECKED
		AREAS	CHECKED
ORIGINAL			
SURVEY			
NOTE BOOK			
NO.			



150 145 140 135 130 125 120 115 110 105 100 95 90 85 80 75 70 65 60 55 50 45 40 35 30 25 20 15 10 5 0 5 10 15 20 25 30 35 40 45 50 55 60 65 70 75 80 85 90 95 100 105 110 115 120 125 130 135 140 145 150

FILE NAME =	USER NAME = #USER#	DESIGNED - M.T.V.	REVISED -	STATE OF ILLINOIS DEPARTMENT OF TRANSPORTATION	PROPOSED CROSS SECTIONS, VILLAGE CENTER DRIVE INTERSECTION CONSTRUCTION (BL-55 & VILLAGE CTR DR), SHERMAN, IL			F.A.P. RTE. 666	SECTION 09-00015-00 PV	COUNTY SANGAMON	TOTAL SHEETS 25	SHEET NO. 25
#FILE#	PLLOT SCALE = #SCALE#	DRAWN - S.D.K.	REVISED -		SCALE:	SHEET NO. 25 OF 25 SHEETS	STA. 2+49.00	TO STA. 2+75.00	CONTRACT NO. 98513		ILLINOIS FED. AID PROJECT	
	PLLOT DATE = #DATE#	CHECKED - T.T.P.	REVISED -									
		DATE - 11/20/09	REVISED -									