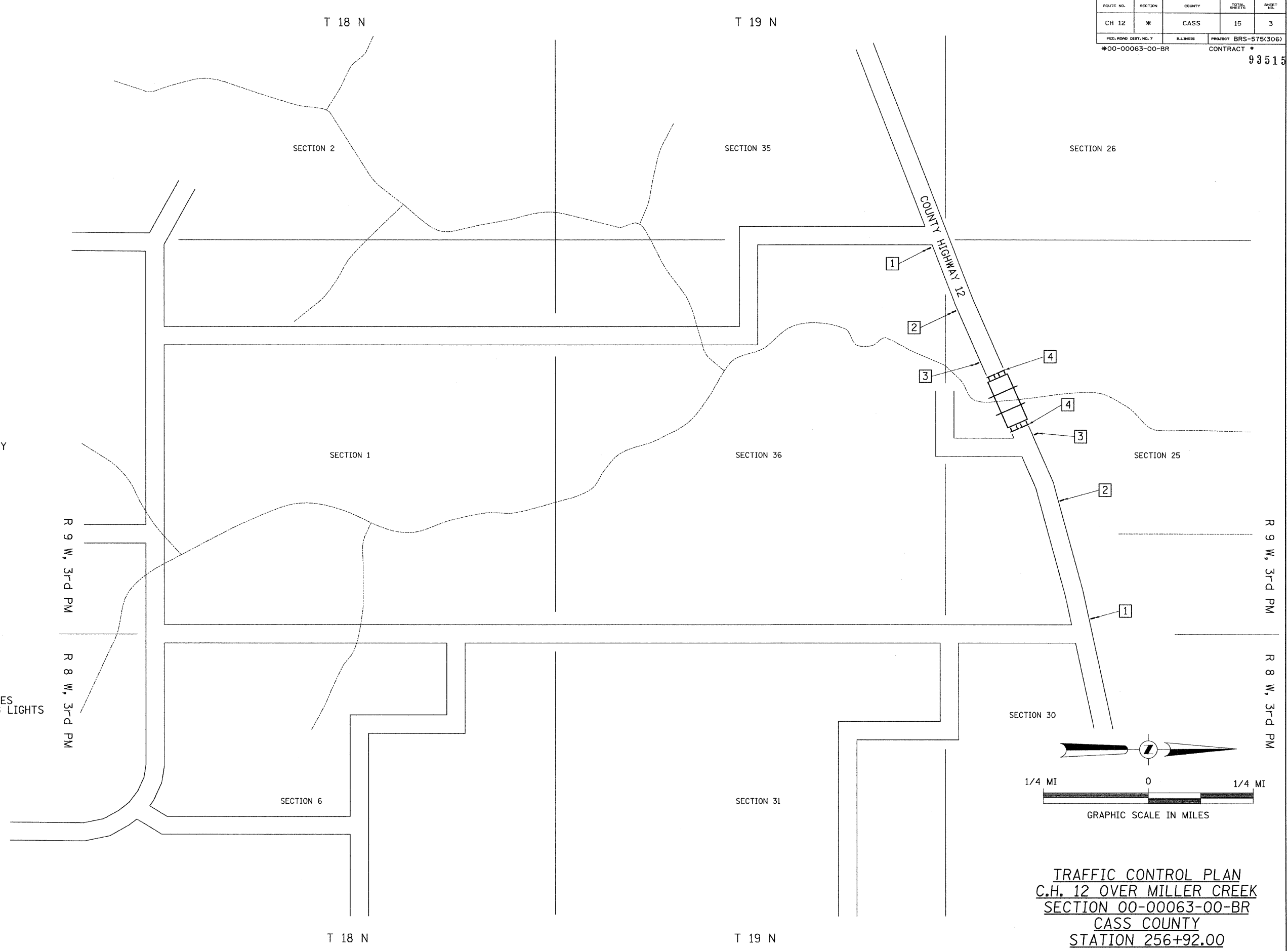
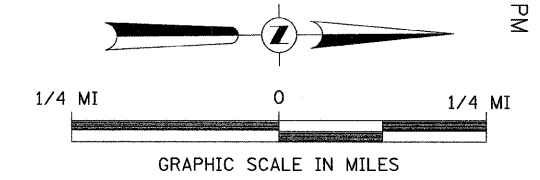


ROUTE NO.	SECTION	COUNTY	TOTAL SHEETS	SHEET NO.
CH 12	*	CASS	15	3
FED. ROAD DIST. NO. 7	ILLINOIS	PROJECT	BRS-575(306)	
*00-0063-00-BR			CONTRACT # 93515	



- 1 ROAD CLOSED
1/2 MILE AHEAD
LOCAL TRAFFIC ONLY
R11-3
 - 2 ROAD CLOSED
AHEAD
W20-3
 - 3 ROAD CLOSED
500 FT
W20-3
 - 4 TYPE III BARRICADES
WITH 2 TYPE A WARNING LIGHTS
- SEE STANDARD BLR 21
AND SPECIAL PROVISIONS



TRAFFIC CONTROL PLAN
 C.H. 12 OVER MILLER CREEK
 SECTION 00-0063-00-BR
 CASS COUNTY
 STATION 256+92.00