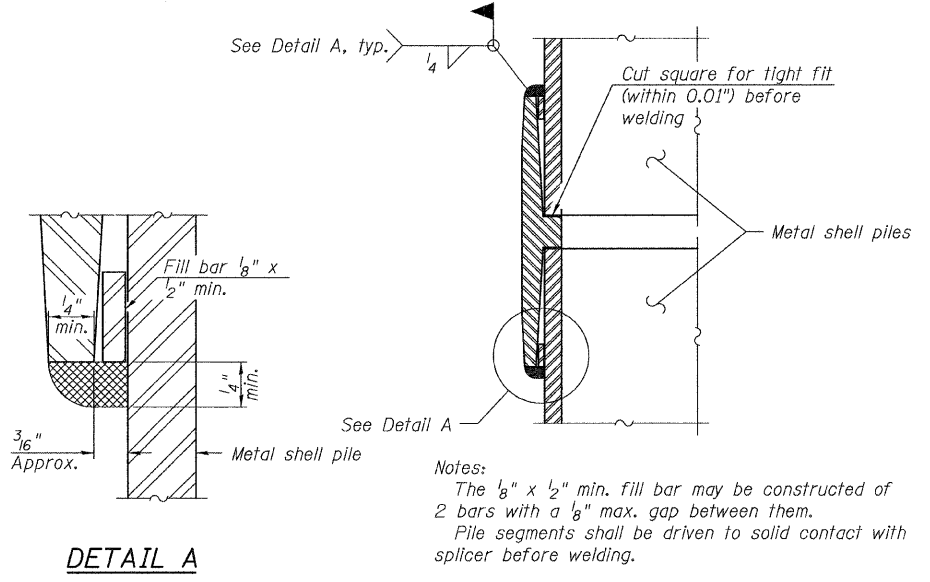
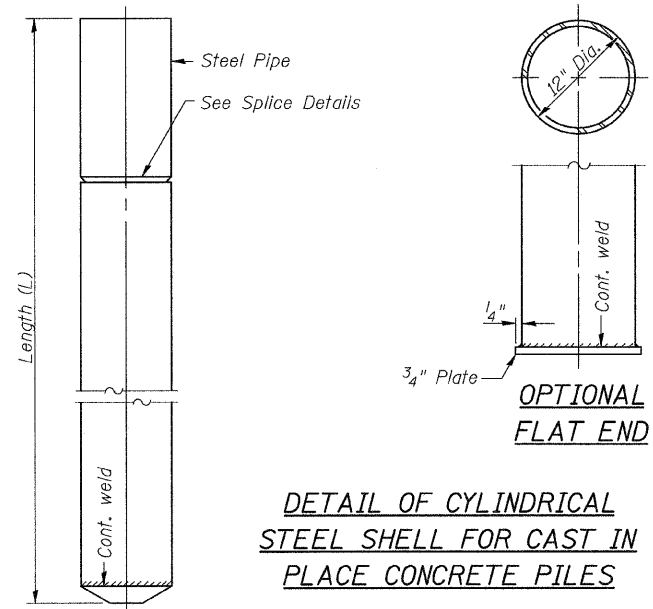
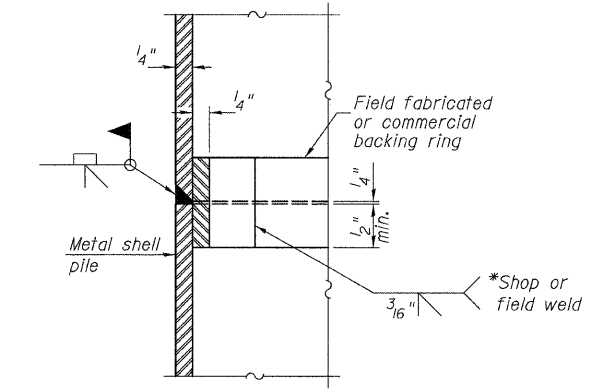


Notes: Driving and bearing ends of pipe shall be cut square. The thickness of the shell shall be 0.25 inches with a tolerance of 5%. The shell shall be according to Article 1006.05(a) of the Standard Specifications, and shall be ASTM A252 Grade 3.



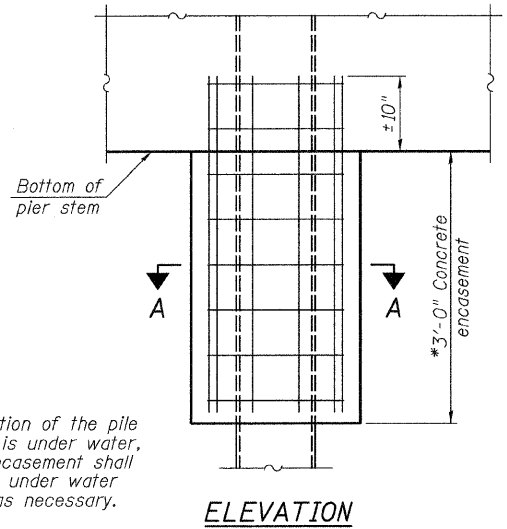
Notes:
The 1/8" x 1/2" min. fill bar may be constructed of 2 bars with a 1/8" max. gap between them.
Pile segments shall be driven to solid contact with splicer before welding.

WELDED COMMERCIAL SPLICE



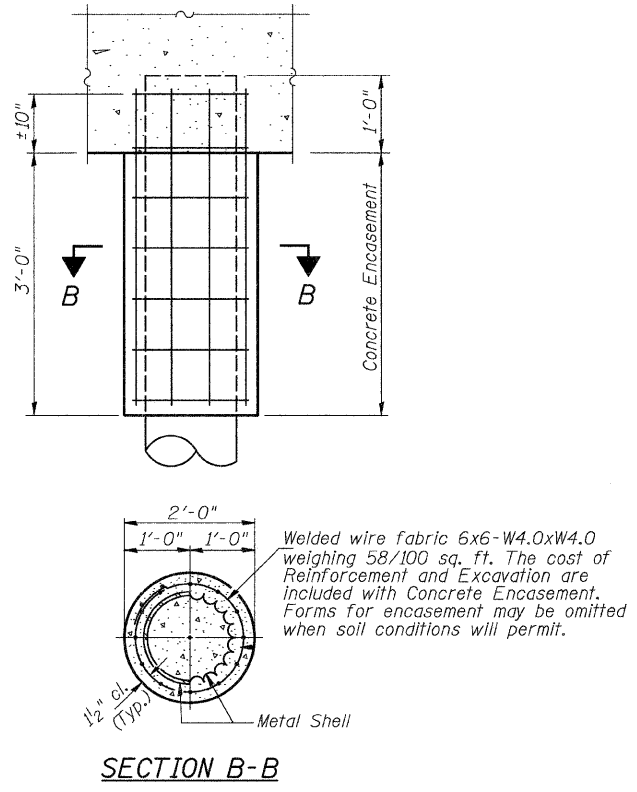
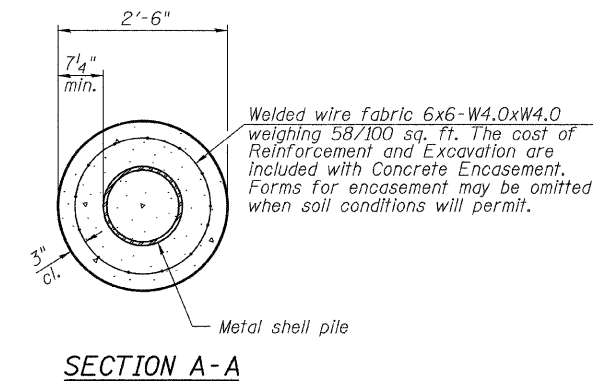
COMPLETE PENETRATION WELD SPLICE

* Field fabricated backing ring may be made from pile shell by removing segment to allow reducing circumference and vertically rejoin with partial joint penetration weld.

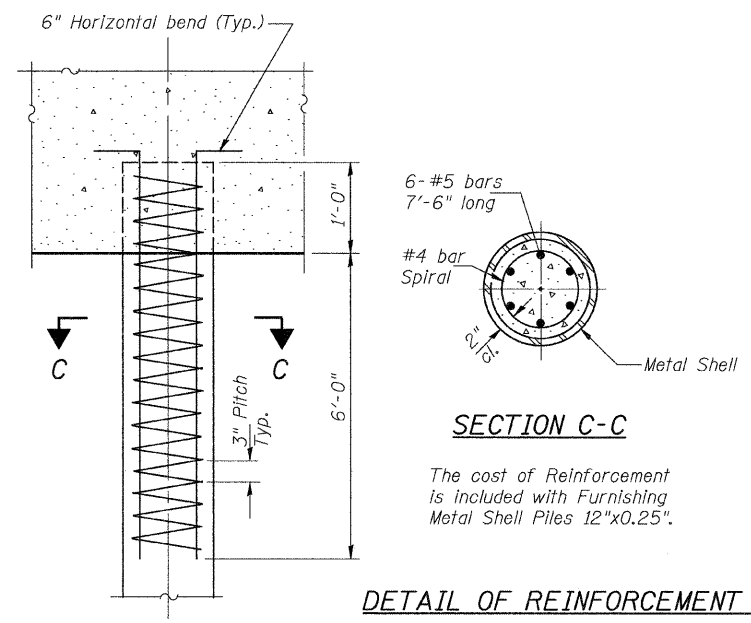


* If a portion of the pile encasement is under water, Concrete Encasement shall be tremmied under water into forms as necessary.

DETAIL OF PROTECTION FOR METAL SHELLS AT PIERS



DETAIL OF METAL SHELL PILE ENCASEMENT AT ABUTMENTS



The cost of Reinforcement is included with Furnishing Metal Shell Piles 12"x0.25".

DETAIL OF REINFORCEMENT FOR METAL SHELLS AT ABUTMENTS

**METAL SHELL PILE DETAILS
COUNTY HIGHWAY 12
OVER MILLER CREEK
SECTION 00-00063-00-BR
CASS COUNTY
STATION 256+92.00**