

F.A.U. RTE.	SECTION	COUNTY	TOTAL SHEETS	SHEET NO.
8153	09-00028-01-DR	SANGAMON	32	1
PROJECT	ILLINOIS	CONTRACT NO.	93516	

STATE OF ILLINOIS  
DEPARTMENT OF TRANSPORTATION  
DIVISION OF HIGHWAYS

PLANS FOR  
PROPOSED LOCAL AGENCY IMPROVEMENTS  
AMERICAN RECOVERY & REINVESTMENT ACT

GORDON DRIVE / FAU ROUTE 8153  
SECTION 09-00028-01-DR  
VILLAGE OF CHATHAM  
PROJECT ARA-5082(009)  
JOB NUMBER C-96-216-10

INDEX OF SHEETS

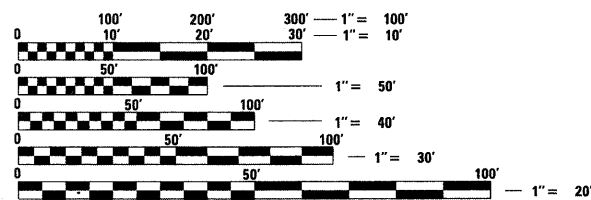
SHEET NO.	DESCRIPTION
1	COVER SHEET
2	SUMMARY OF QUANTITIES & GENERAL NOTES
3 - 5	TYPICAL SECTIONS
6	ALIGNMENT AND TIES
7 - 8	PLAN AND PROFILE SHEETS
9	REMOVAL AND ADJUSTMENT PLAN (S.N. 084-8011)
10	EROSION CONTROL (S.N. 084-8011)
11	REMOVAL AND EROSION CONTROL PLAN (5' X 3' BOX)
12	DETOUR PLAN
13 - 21	BOX CULVERT PLANS
22 - 32	CROSS SECTIONS

STANDARDS

000001-05	STANDARD SYMBOLS, ABBREVIATIONS AND PATTERNS
280001-05	TEMPORARY EROSION CONTROL SYSTEMS
515001-03	NAME PLATE FOR BRIDGES
630301-05	SHOULDER WIDENING FOR TYPE 1 (SPECIAL) GUARDRAIL TERMINALS
635006-03	REFLECTOR AND TERMINAL MARKER PLACEMENT
701301-03	LANE CLOSURE, 2L, 2W, SHORT TERM OPERATIONS
701901-01	TRAFFIC CONTROL DEVICES
BLR 21-8	TYPICAL APPLICATION OF TRAFFIC CONTROL DEVICES FOR CONSTRUCTION ON RURAL LOCAL HIGHWAYS
BLR 22-6	TYPICAL APPLICATION OF TRAFFIC CONTROL DEVICES FOR CONSTRUCTION ON RURAL LOCAL HIGHWAYS (TWO LANE, TWO WAY RURAL TRAFFIC) (ROAD CLOSED TO THRU TRAFFIC)
BLR 26-2	STEEL PLATE BEAM GUARDRAIL 27 1/2" HEIGHT

UTILITIES

TELEPHONE	ELECTRIC, WATER & SEWER	ELECTRIC
VERIZON 330 WEST BEECHER JACKSONVILLE, IL 62650	VILLAGE OF CHATHAM 116 EAST MULBERRY CHATHAM, IL 62629	CENTRAL ILLINOIS LIGHT CO. 322 E. CAPITAL SPRINGFIELD, IL
GAS AMEREN 322 EAST CAPITOL SPRINGFIELD, IL 62701	CABLE TV INSIGHT COMMUNICATIONS SPRINGFIELD, IL	RURAL ELECTRIC CO-OP RURAL ROUTE 1 AUBURN, IL



FULL SIZE PLANS HAVE BEEN PREPARED USING STANDARD ENGINEERING SCALES. REDUCED SIZED PLANS WILL NOT CONFORM TO STANDARD SCALES. IN MAKING MEASUREMENTS ON REDUCED PLANS, THE ABOVE SCALES MAY BE USED.

J.U.L.I.E.  
JOINT UTILITY LOCATION INFORMATION FOR EXCAVATION  
1-800-892-0123  
OR 811

PROJECT ENGINEER  
PROJECT MANAGER

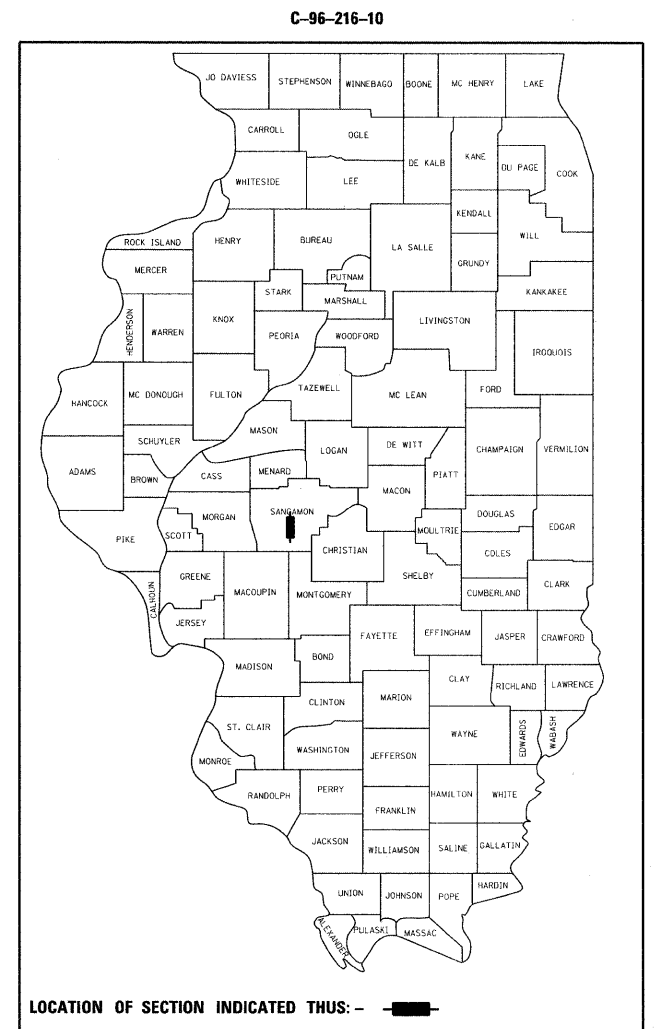
DESIGN DESIGNATION

MINOR ARTERIAL (ADT 4450 (27))  
DESIGN SPEED = 30 MPH

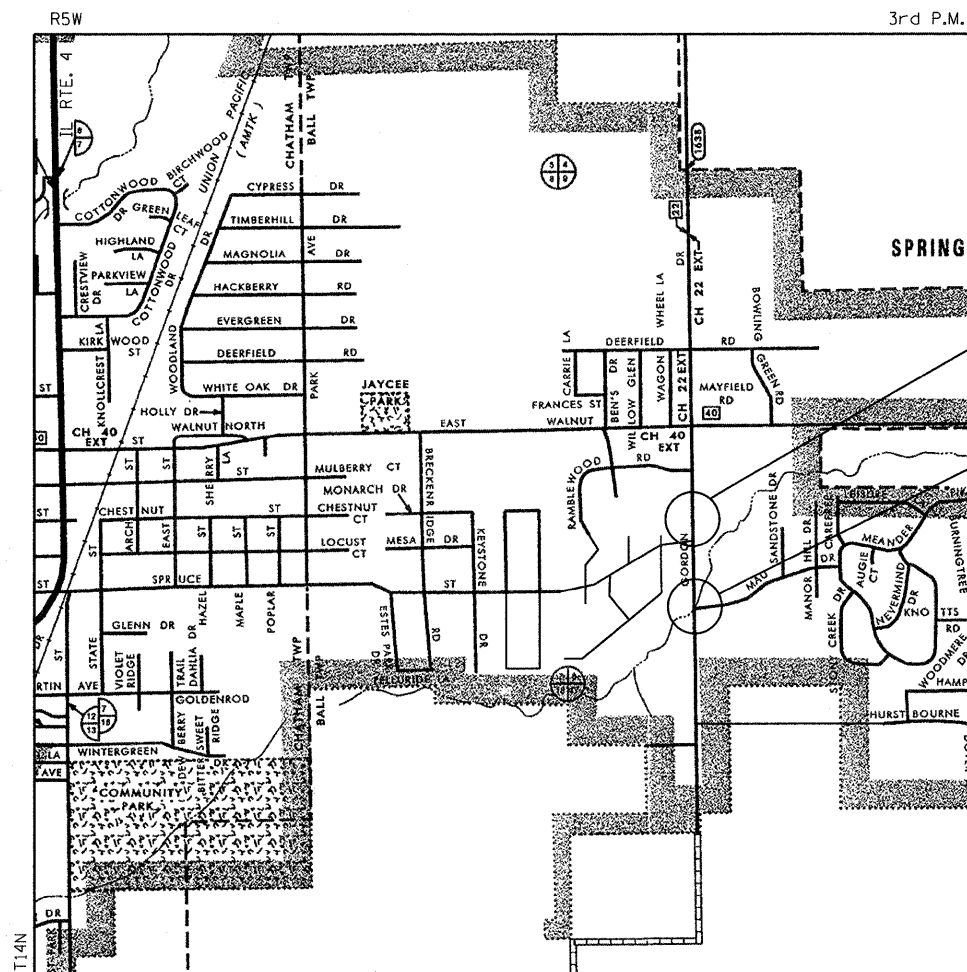
CONTRACT NO. 93516

LOCATION MAP

GROSS LENGTH = 1,056.00 FEET = 0.200 MILES  
NET LENGTH = 474.00 FEET = 0.090 MILES



LOCATION OF SECTION INDICATED THUS: - [Symbol]



5' X 3' PRC BOX CULVERT  
STA. 50+33.42

STRUCTURE NO. 084-8011  
STATION 41+97.55  
MODIFICATION TO TRIPLE BARREL  
(10'x7' x 134' LONG) RC BOX CULVERT

APPROVED	Nov. 24	20 09
VILLAGE PRESIDENT		
PASSED	Nov 30	20 09
DISTRICT SIX ENGINEER OF LOCAL ROADS & STREETS		
PASSED	November 30	20 09
DISTRICT SIX ENGINEER OF CONSTRUCTION		
Releasing For Bid Based on Limited Review	Nov 30	20 09
DEPUTY DIRECTOR OF HIGHWAYS, REGION FOUR ENGINEER		
STATE OF ILLINOIS DEPARTMENT OF TRANSPORTATION		

PRINTED BY THE AUTHORITY  
OF THE STATE OF ILLINOIS

COMPUTER FILE NO. 06167-sht-Cover.dgn  
PROJECT 06167  
11/18/09 - FAV



Willie C. Editt 11/20/09  
EXPIRES: 11/30/11

