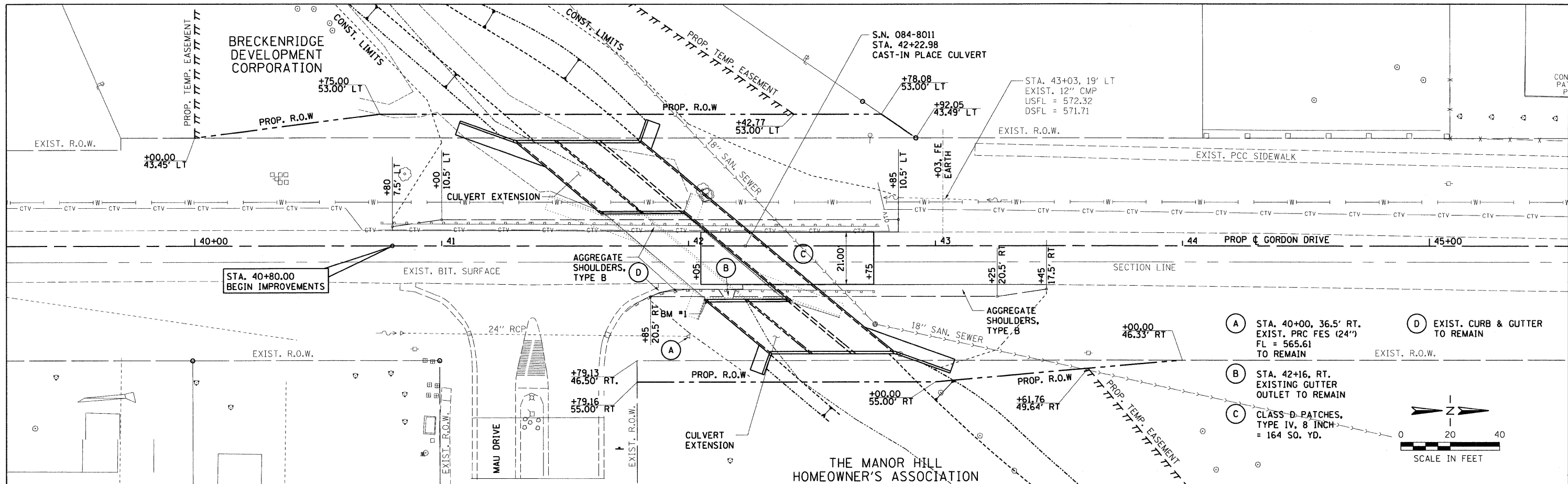


DATE	
BY	
SURVEYED	
ALIGNED	
CHECKED	
RT. OF WAY	
CHECKED	
NO.	
NO.	
NO.	

DATE	
BY	
SURVEYED	
GRADES	
CHECKED	
B.M. NOTED	
NO.	
STRUCTURE	
NOTATIONS	
CHPG	

GREENE & BRAUFORD, INC.
 1000 N. W. 10th St., Ft. Lauderdale, FL 33304
 (954) 561-1100
 www.greenebrauford.com



- (A) STA. 40+00, 36.5' RT. EXIST. PRC FES (24") FL = 565.61 TO REMAIN
- (B) STA. 42+16, RT. EXISTING GUTTER OUTLET TO REMAIN
- (C) CLASS D PATCHES, TYPE IV, 8 INCH = 164 SQ. YD.
- (D) EXIST. CURB & GUTTER TO REMAIN

