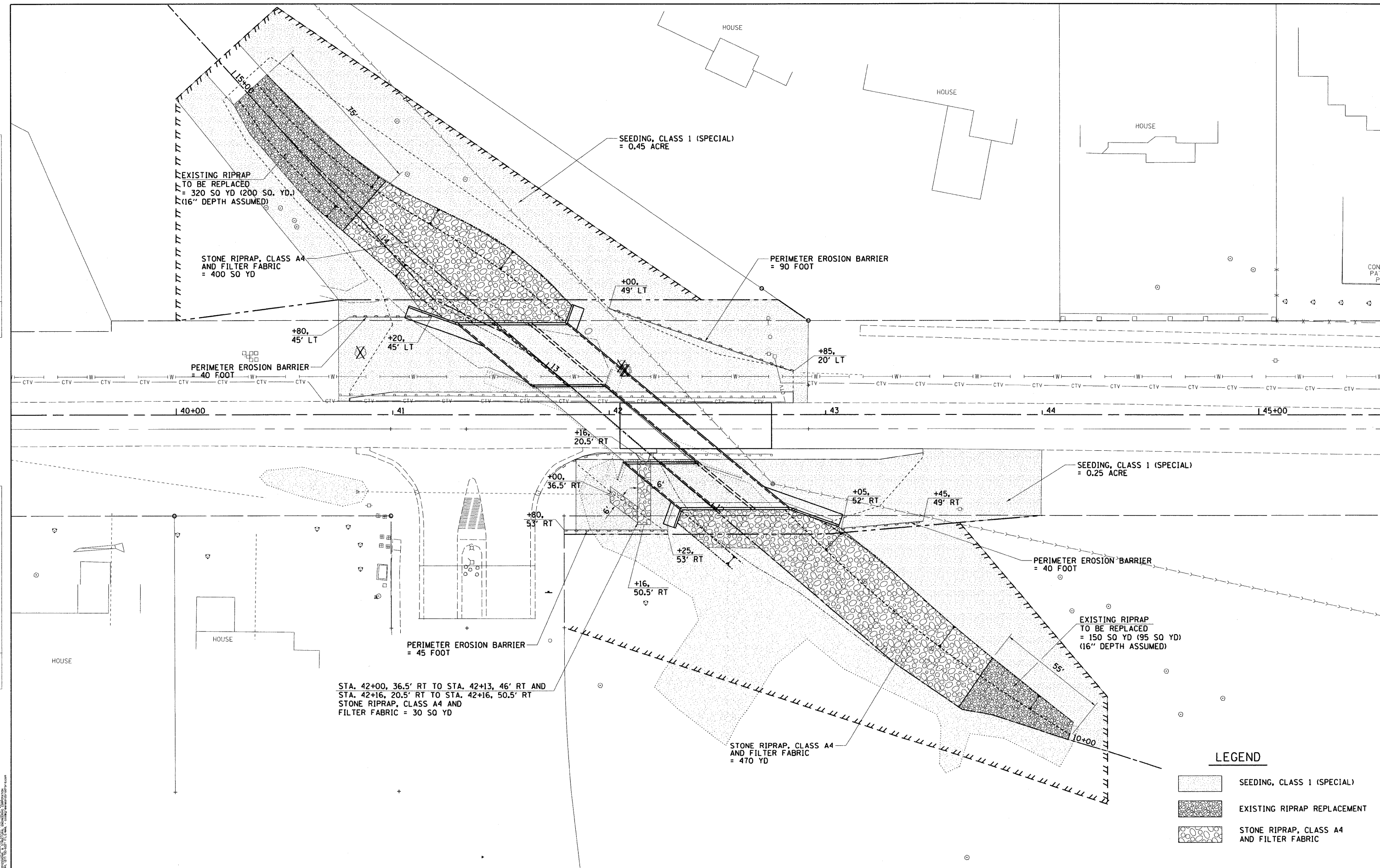


PLAN	DATE
SURVEYED	BY
ALTIMETER CHECKED	
RTY. OF WAY CHECKED	
NOTE BOOK NO.	
ADD. FILE NAME	

PROFILE	DATE
SURVEYED	BY
GRADES CHECKED	
B.M. NOTED	
STRUCTURE NOTATIONS CHECKED	
NOTE BOOK NO.	

GREENE & BRADFORD, INC.  
OF SPRINGFIELD  
SURVEYING & ENGINEERING  
INCORPORATED  
1000 N. WASHINGTON ST., SUITE 100  
SPRINGFIELD, ILLINOIS 62760  
TEL: 217/223-1111 FAX: 217/223-1112  
WWW.GREENEANDBRADFORD.COM



STA. 42+00, 36.5' RT TO STA. 42+13, 46' RT AND  
STA. 42+16, 20.5' RT TO STA. 42+16, 50.5' RT  
STONE RIPRAP, CLASS A4 AND  
FILTER FABRIC = 30 SQ YD

**VILLAGE OF CHATHAM  
GORDON DRIVE IMPROVEMENTS**

**EROSION CONTROL - S.N. 084-8011**

**LEGEND**

[Dotted Hatching]	SEEDING, CLASS 1 (SPECIAL)
[Cross-hatched]	EXISTING RIPRAP REPLACEMENT
[Stone Hatching]	STONE RIPRAP, CLASS A4 AND FILTER FABRIC

FILE NAME = J:\06167\DRAWINGS\06167-shr-Rem-Eros-phase1A.dgn	USER NAME = Franky	DESIGNED -	REVISED -	<b>VILLAGE OF CHATHAM GORDON DRIVE IMPROVEMENTS</b>	<b>EROSION CONTROL - S.N. 084-8011</b>	F.A.U. RTE. 8153	SECTION 09-00028-01-DR	COUNTY SANGAMON	TOTAL SHEETS 32	SHEET NO. 10		
G&B PROJECT: 06167	PLOT SCALE = 20.0000' / in.	CHECKED -	REVISED -			SCALE: 1" = 20'	SHEET NO. 1 OF 1 SHEETS	STA. TO STA.	CONTRACT NO. 93516			
PLOT DATE = 11/19/2009	DATE -	DRAWN -	REVISED -			FED. ROAD DIST. NO. ILLINOIS FED. AID PROJECT ARA-5082(009)						
PLOT DRIVER = V8i.TDS700.PS.LOCAL.ID01.plt to Fg												