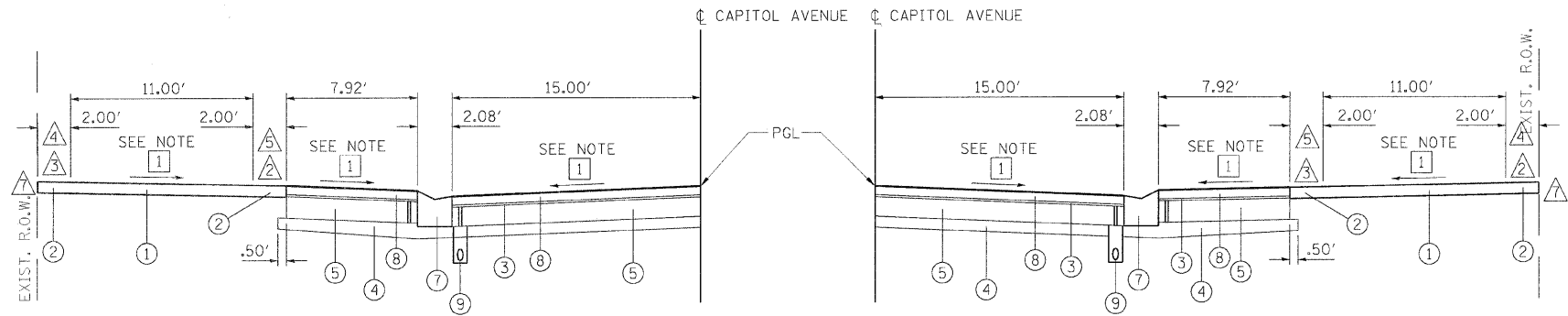


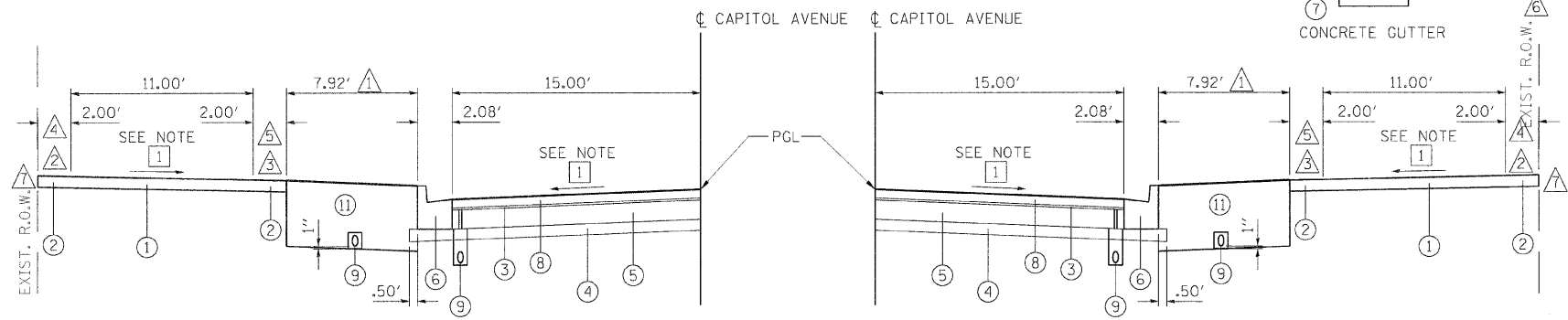
| | | | | |
|--------------------------------------|---------------------------|----------|--------------|-----------|
| F.A.U. RTE. | SECTION | COUNTY | TOTAL SHEETS | SHEET NO. |
| 7982 | | SANGAMON | 68 | 18 |
| STA. | TO STA. | | | |
| FED. ROAD DIST. NO. | ILLINOIS FED. AID PROJECT | | | |
| • 09-00447-03-PV CITY OF SPRINGFIELD | | | | |



TYPICAL SECTION A - LEFT SIDE
TYPICAL SECTION A - RIGHT SIDE

CAPITOL AVENUE DEPRESSED CURB SECTION
SEE ROADWAY PLANS FOR LOCATIONS

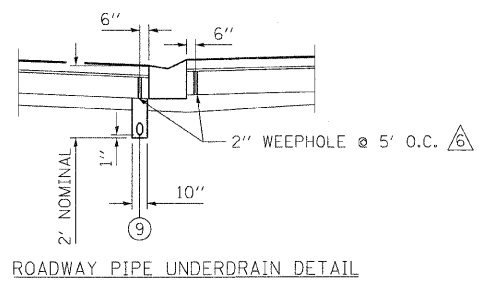
1 SEE CROSS SECTIONS SHEETS FOR INFORMATION



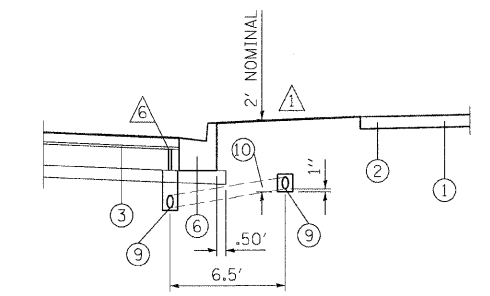
TYPICAL SECTION B - LEFT SIDE
TYPICAL SECTION B - RIGHT SIDE

CAPITOL AVENUE RAISED CURB SECTION
SEE ROADWAY PLANS FOR LOCATIONS

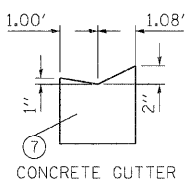
1 SEE CROSS SECTIONS SHEETS FOR INFORMATION



ROADWAY PIPE UNDERDRAIN DETAIL



ROADWAY/PLANTING BED PIPE UNDERDRAIN DETAIL



CONCRETE GUTTER

OUTER BAND FEATURES INCLUDE
CUSTOM FENCE
STANDARD BENCH
TRASH RECEPTACLE

INNER BAND FEATURES INCLUDE
STREET LIGHTS
PEDESTRIAN LIGHTS
INTERPRETIVE MARKER
CUSTOM PLANTER
LIMESTONE BENCH
ELECTRIC VENDOR ACCESS

LEGEND

- 1 PCC SIDEWALK 4 INCH
- 2 PCC SIDEWALK 4 INCH (SMOOTH FINISH)
- 3 SAND BEDDING LAYER, 1"
- 4 SUB-BASE GRANULAR MATERIAL, TYPE A 4"
- 5 PORTLAND CEMENT CONCRETE PAVEMENT 7" (JOINTED)
- 6 COMBINATION CONCRETE CURB AND GUTTER, TYPE B-6.18
- 7 CONCRETE GUTTER
- 8 CONCRETE PAVERS, 3 1/8 "
- 9 4" PIPE UNDERDRAIN
- 10 PIPE UNDERDRAIN (SPECIAL)
- 11 TOPSOIL (SEE PLANTING PLANS)

NOTES

- 1 SEE PLANTING PLANS FOR DETAILS
- 2 SIDEWALK OUTER BAND
- 3 SIDEWALK INNER BAND
- 4 FEATURES LOCATED ON THE SIDEWALK OUTER BAND TO BE CENTERED ON THE BAND
- 5 FEATURES LOCATED ON THE SIDEWALK INNER BAND TO BE CENTERED ON THE BAND
- 6 WEEP HOLES TO BE FORMED WITH PAVEMENT AND FILLED WITH CA-16 (PEA GRAVEL)
- 7 MATCH EXISTING ELEVATION. PLACE 1/2 IN. EXPANSION JOINT ALONG EXISTING BUILDINGS ACCORDING TO ARTICLE 424.07 OF THE STANDARD SPECIFICATIONS FOR ROAD AND BRIDGE CONSTRUCTION. THIS WORK INCLUDED IN THE COST FOR PCC SIDEWALK.

PCC PAVEMENT

| | |
|--|-------------------------------|
| STRUCTURAL DESIGN TRAFFIC | YEAR 2017 |
| PV = 5782 | SU = - MU = 118 |
| ROAD/STREET CLASSIFICATION: | CLASS II |
| PERCENT OF STRUCTURAL DESIGN TRAFFIC IN DESIGN LANE: | |
| P = 98% | S = - M = 2% |
| TRAFFIC FACTOR: | ACTUAL TF = .57 AC TYPE = N/A |
| | MINIMUM TF = N/A |
| PG GRADE: | BINDER = N/A SURFACE = N/A |
| SUBGRADE SUPPORT RATING: | SSR = POOR |

| REVISIONS | | ILLINOIS DEPARTMENT OF TRANSPORTATION PROPOSED TYPICAL SECTIONS |
|-----------|------|---|
| NAME | DATE | |
| | | FAU RTE 7982 CAPITOL AVE SEC NO. 09-00447-03-PV SANGAMON COUNTY, ILLINOIS |
| | | |
| | | |
| | | |
| | | |
| | | |
| | | |
| | | |
| | | |
| | | |

VERT. SCALE: HORIZ. DATE 10/9/09
DRAWN BY DAP
CHECKED BY JXH



© Copyright Hanson Professional Services Inc. 2009
 LAYOUT: DAP 02/23/07
 DRAWN: DAP 02/23/07
 REVIEWED: MH 09/19/07
 PLOT DATE: 11/23/2009
 FILE NAME: I:\AZ2\jobs\02520414\CADD\Road\Microstation\Sheets\Section\2.5\7\4\A-C-007.PR.TYP.dgn
 PLOT SCALE: 5/0000 = 1/4"
 USER NAME: r.hjland@h5i