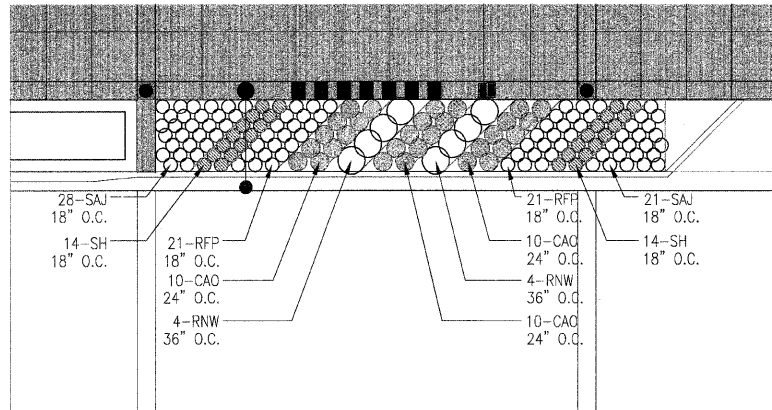
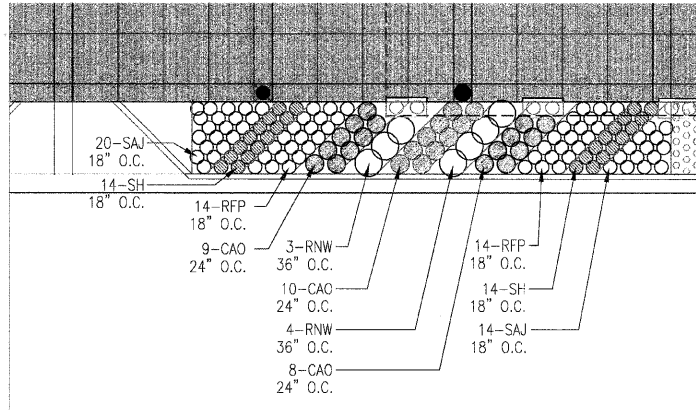


F.A.U. RTE.	SECTION	COUNTY	TOTAL SHEETS	SHEET NO.
7982	*	SANGAMON	68	46
STA.		TO STA.		
FED. ROAD DIST. NO.		ILLINOIS	FED. AID PROJECT	
09-00447-03-PV		CITY OF SPRINGFIELD		



L 2-1 CAPITOL AVENUE MIDBLOCK 1

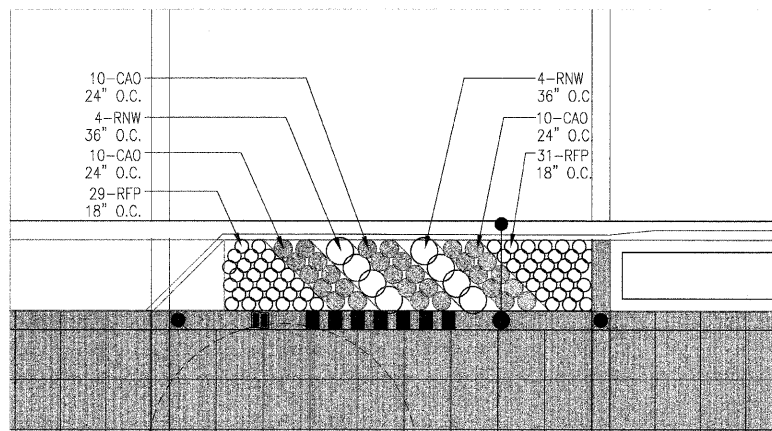


L 2-2 CAPITOL AVENUE MIDBLOCK 2

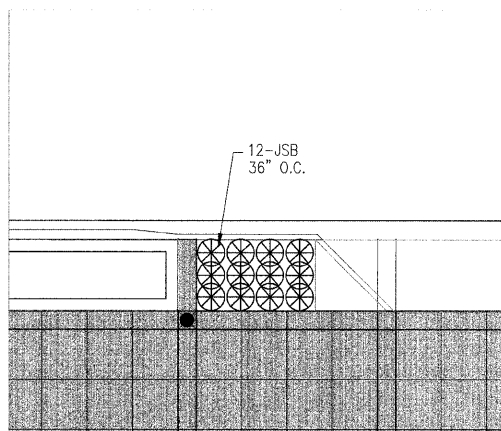
CMB-TYPICAL MIDBLOCK PLANT LIST			
DESIGNATION	BOTANICAL NAME	COMMON NAME	SIZE
SHRUBS			
RNW	ROSA 'NEARLY WILD'	NEARLY WILD ROSE	5-GALLON 24" HEIGHT
PERENNIALS AND GROUNDCOVERS			
CAO	CALAMAGROSTIS ACUTIFLORA 'OVERDAM'	FEATHER REED GRASS	1-GAL. WELL DEVELOPED
JSB	JUNIPERUS SABINA 'BUFFALO'	BUFFALO JUNIPER	3-GAL. WELL DEVELOPED
RFG	RUDBECKIA FULGIDA 'POT OF GOLD'	POT OF GOLD BLACK-EYED SUSAN	1-GAL. WELL DEVELOPED
SAJ	SEDUM 'AUTUMN JOY'	AUTUMN JOY SEDUM	1-GAL. WELL DEVELOPED
SH	SPOROBOLUS HETEROLEPIS	PRAIRIE DROPSEED	1-GAL. WELL DEVELOPED

AREAS AJACENT TO DRIVEWAY ENTRANCES AND LESS THAN 150 SQ. FT. SHALL BE PLANTED ENTIRELY OF JUNIPERUS SABINA 'BUFFALO' AS SHOWN BY DETAIL 2-2

Massie & Associates
 1210 S. 5th Street, Springfield, IL 62703 217-544-3210
 421 West Main Street, Decatur, IL 62522 217-424-0792



L 2-3 CAPITOL AVENUE MIDBLOCK 3



L 2-4 CAPITOL AVENUE MIDBLOCK 4

TYPICAL EASEMENT AREAS OUTSIDE R.O.W. PLANT LIST			
DESIGNATION	BOTANICAL NAME	COMMON NAME	SIZE
TREES			
AG	AMELANCHIER X GRANDIFLORA 'AUTUMN BRILLIANCE'	AUTUMN BRILLIANCE SERVICEBERRY	2" B.B.
AR	ACER RUBRUM 'BOWHALL'	BOWHALL MAPLE	3" B.B.
QW	QUERCUS WARE! 'REGAL PRINCE'	REGAL PRINCE OAK	2 1/2" B.B.
SHRUBS			
HHA	HYDRANGEA ARBORESCENS 'ANNABELLE'	ANNABELLE HYDRANGEA	5 GAL. 24" HEIGHT
TMD	TAXUS x MEDIA 'DENSIFORMIS'	DENSIFORMIS ANGLOJAP YEW	5 GAL. 24" WIDTH
PERENNIALS AND GROUNDCOVERS			
HH	HEDERA HELIX 'THORNDALE'	ENGLISH IVY	4" POT WELL DEVELOPED
LS	LIRIOPE SPICATA	CREeping LILYTURF	1 QUART WELL DEVELOPED
SH	SPOROBOLUS HETEROLEPIS	PRAIRIE DROPSEED	1 GALLON WELL DEVELOPED

PLOT DATE = 02/24/09
 FILE NAME = Capitol Avenue Planting Plan
 PLOT SCALE = 1:10
 USER NAME =



REVISIONS	
NAME	DATE
#1	10/28/09

ILLINOIS DEPARTMENT OF TRANSPORTATION
 TYPICAL MIDBLOCK PLANTING
 FAU RTE 7982 CAPITOL AVE
 SEC NO. 09-00447-03-PV
 SANGAMON COUNTY, ILLINOIS

SCALE: VERT. _____
 HORIZ. _____
 DATE _____

DRAWN BY _____
 CHECKED BY _____