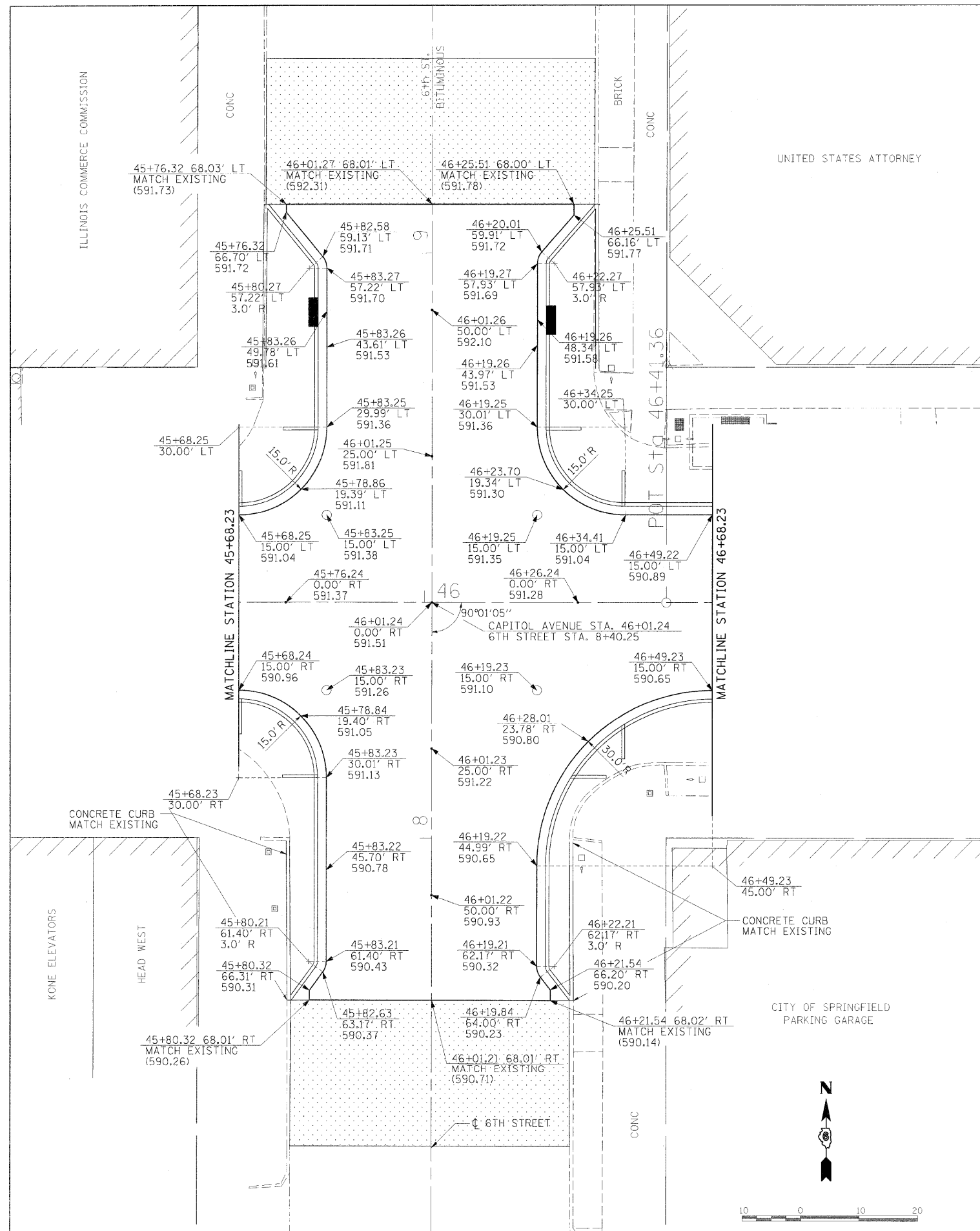
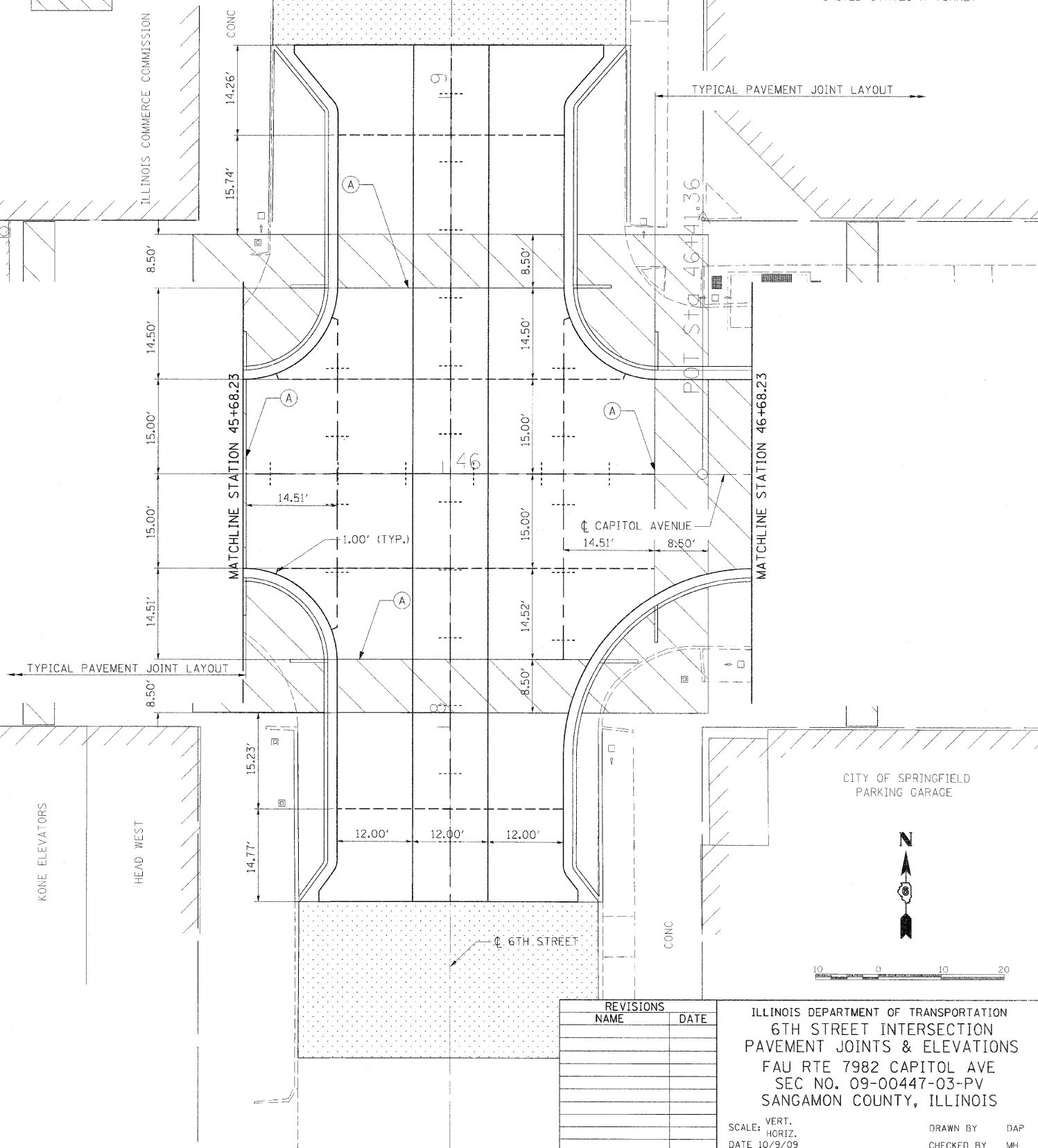


| F.A.U. RTE. | SECTION | COUNTY | TOTAL SHEETS | SHEET NO. |
|---------------------|---------|---------------------------|--------------|-----------|
| 7982 | * | SANGAMON | 68 | 49 |
| STA. | | TO STA. | | |
| FED. ROAD DIST. NO. | | ILLINOIS FED. AID PROJECT | | |
| * 09-00447-03-PV | | CITY OF SPRINGFIELD | | |

LEGEND

- LONGITUDINAL CONSTRUCTION JOINT
- SAWED LONGITUDINAL JOINT
- TRANSVERSE SAWED CONTRACTION JOINT
- TRANSVERSE SAWED OR CONSTRUCTION JOINT (CONTRACTOR'S OPTION)
- SEE STD. 420001 FOR JOINT DETAILS & REINFORCEMENT.
- ALL STATIONING & OFFSETS ARE TO C.C. CAPITOL AVENUE

PROPOSED CONCRETE PAVERS



| REVISIONS | |
|-----------|------|
| NAME | DATE |
| | |
| | |
| | |
| | |
| | |
| | |
| | |
| | |
| | |

ILLINOIS DEPARTMENT OF TRANSPORTATION
 6TH STREET INTERSECTION
 PAVEMENT JOINTS & ELEVATIONS
 FAU RTE 7982 CAPITOL AVE
 SEC NO. 09-00447-03-PV
 SANGAMON COUNTY, ILLINOIS

SCALE: VERT. 1"=10'
 HORIZ. 1"=20'

DATE 10/9/09

DRAWN BY DAP
 CHECKED BY MH



© Copyright Hanson Professional Services Inc. 2009

LAYOUT: DAP 10/14/09
 DRAWN: DAP 10/14/09
 REVIEWED: MH 10/19/09

PLT DATE = 11/23/2009
 FILE NAME = I:\02\jobs\02522041A\CADD\Road\Microstation\Sheet\Section_2_5.sh-7.bnc-784_.jp.e.dgn
 PLT SCALE = 10/0000 / 1"
 USER NAME = Hagan@hps1