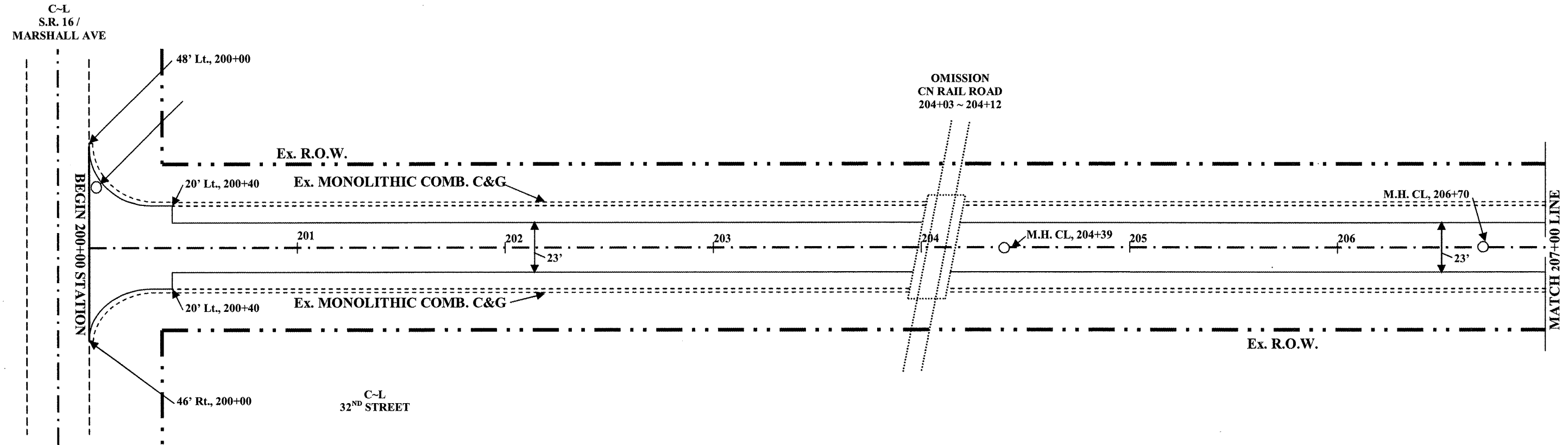


# PLAN VIEW

**32<sup>ND</sup> STREET**

CITY OF MATTOON  
SECTION 09-00182-00-RS  
CONTRACT#: 95610  
ROUTE: 7685 / 32<sup>ND</sup> ST.  
COLES COUNTY  
SHEET 22 OF 54



<b>40600625 LEVELING BINDER MM, N50 (3/4)</b>	
11.5' - 48' Lt., 200+00 ~ 200+40	= 3 TON
11.5' - 46' Rt., 200+00 ~ 200+40	= 3 TON
<b>TOTAL</b>	<b>= 6 TON</b>

<b>40603310 HMA SC C N50 (1-1/2")</b>	
11.5' - 48' Lt., 200+00 ~ 200+40	= 5 TON
11.5' - 46' Rt., 200+00 ~ 200+40	= 5 TON
<b>TOTAL</b>	<b>= 10 TON</b>

<b>44201761 CLASS D PATCHES, TYPE 1, 10 INCH</b>	
10' - 19' Lt., 200+04 ~ 200+09	= 5.0 SQ. YDS.
<b>TOTAL</b>	<b>= 5.0 SQ. YDS.</b>

<b>44000157 HMA SURF REM 2</b>	
48' Lt. - 46' Rt., 200+00 ~ 20' Lt. - Rt., 200+40	= 220.7 SQ. YDS.
<b>TOTAL</b>	<b>= 220.7 SQ. YDS.</b>

<b>60300350 MAN FRAMES ADJUST</b>	
M.H. 30' Lt., 200+02	= 1 EACH
M.H. CL, 204+39	= 1 EACH
M.H. CL, 206+70	= 1 EACH
<b>TOTAL</b>	<b>= 3 EACH</b>

JOB: C-97-030-10  
PROJECT: ARA-M-5042(018)  
SCALE: 1" = 50'