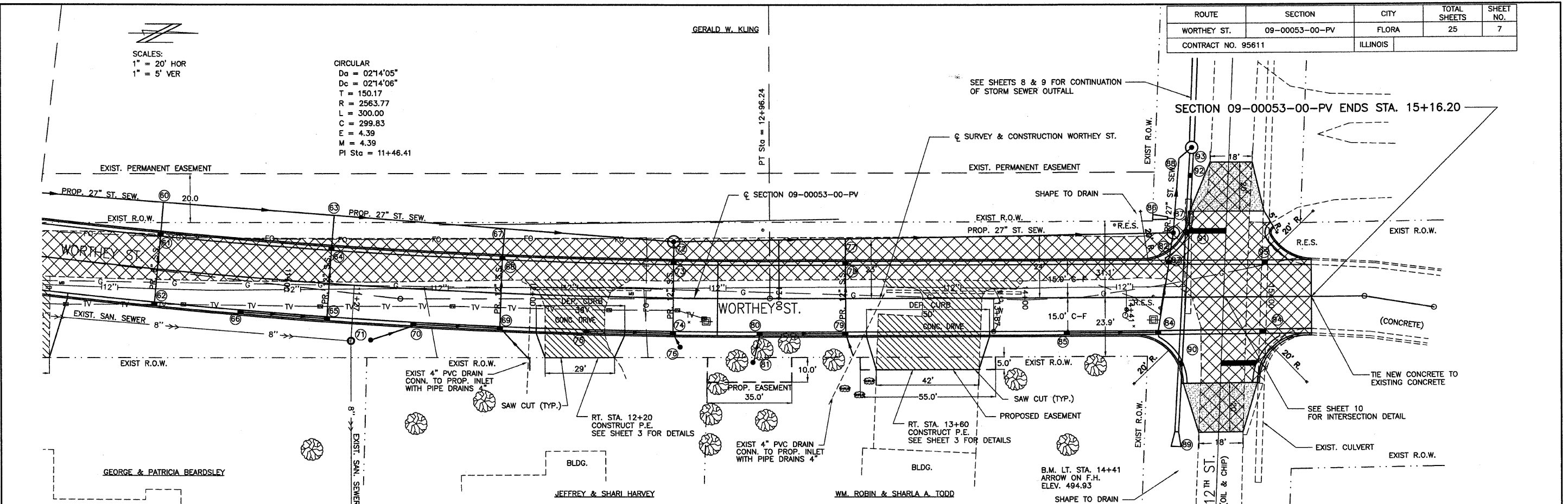


SCALES:
1" = 20' HOR
1" = 5' VER

CIRCULAR
D_a = 02'14"05"
D_c = 02'14"06"
T = 150.17
R = 2563.77
L = 300.00
C = 299.83
E = 4.39
M = 4.39
PI Sta = 11+46.41

GERALD W. KLING

ROUTE	SECTION	CITY	TOTAL SHEETS	SHEET NO.
WORTHY ST.	09-00053-00-PV	FLORA	25	7
CONTRACT NO. 95611		ILLINOIS		



515	PIPE CULVERT REMOVAL	FOOT	TR. B' FILL	VALVE BOXES TO BE ADJUSTED	EACH	AGG. BASE CSE., TY-B	TON	INCID. H.M.A. SURFACING	TON	SEEDING, CLASS 1 (SPL)	ACRE	515
	RT. STA. 12+20 RT. STA. 13+60 A.R. STA. 14+66	48 55 47	36 41 78	RT. STA. 14+41	1	LT. STA. 14+81 RT. STA. 14+81	20 20 TOTAL 40 TON	LT. STA. 14+81 RT. STA. 14+81	10 10 TOTAL 20 TON	STA. 11+00 TO 15+6	0.54	
510		TOTAL 150 FOOT	TOTAL 155 CU YD	PROCESSING MODIFIED SOIL, 14"	SQ. YD.			REM. & RESETTING SIGNS	EACH			510
				STA. 11+00 TO 15+16	1746			LT. STA. 13+00 LT. STA. 14+36 LT. STA. 14+52 RT. STA. 14+55 LT. STA. 15+05	1 1 1 1 1			
505	PAVEMENT REMOVAL	SQ. YD.		LIME	TON					PIPE DRAINS 4"	FOOT	505
	STA. 11+00 TO 15+16	1098		STA. 11+00 TO 15+16	61				TOTAL 5 EACH	RT. STA. 12+00 RT. STA. 13+27	10 16 TOTAL 26 FOOT	
500				P.C.C. PAV'T 7" (SPL.) W/ I.C.	SQ. YD.							500
				STA. 11+00 TO 14+96.37	1616		VPI STA = 13+17.00 VPI EL = 494.80 g1 = -0.78% g2 = -1.04% CURVE LEN = 300.00 K = 1486.02 E = 0.09			RT. STA. 12+00 RT. STA. 13+27		
495								PROP. ϕ SURFACE				495
490												490
485	DRIVEWAY PAVEMENT REMOVAL	SQ. YD.		P.C.C. DRIVEWAY PAV'T 6"	SQ. YD.			PAINT PAV'T MARKING LINE 4"	FOOT			485
	RT. STA. 12+20 RT. STA. 13+60	96 154 TOTAL 250 SQ. YD.		RT. STA. 12+20 RT. STA. 13+60	35 69 TOTAL 104 SQ. YD.			STA. 11+00 TO 14+57	105			
480	MANHOLES TO BE ADJUSTED	EACH		MAILBOX REM. & RELOCATION	EACH			PAINT PAV'T MARKING LINE 24"	FOOT			480
	RT. STA. 11+27	1		LT. STA. 12+40 LT. STA. 13+90	1 1 TOTAL 2 EACH			LT. & RT. STA. 14+80	30			
475												475
470												470
10+00	10+50	11+00	11+50	12+00	12+50	13+00	13+50	14+00	14+50	15+00	15+50	
498.1 497.26	497.6 496.89	496.9 496.50	496.2 496.11	495.6 495.71	495.0 495.29	494.0 494.86	494.2 494.40	493.5 493.92	492.9 493.42	492.8 492.91		