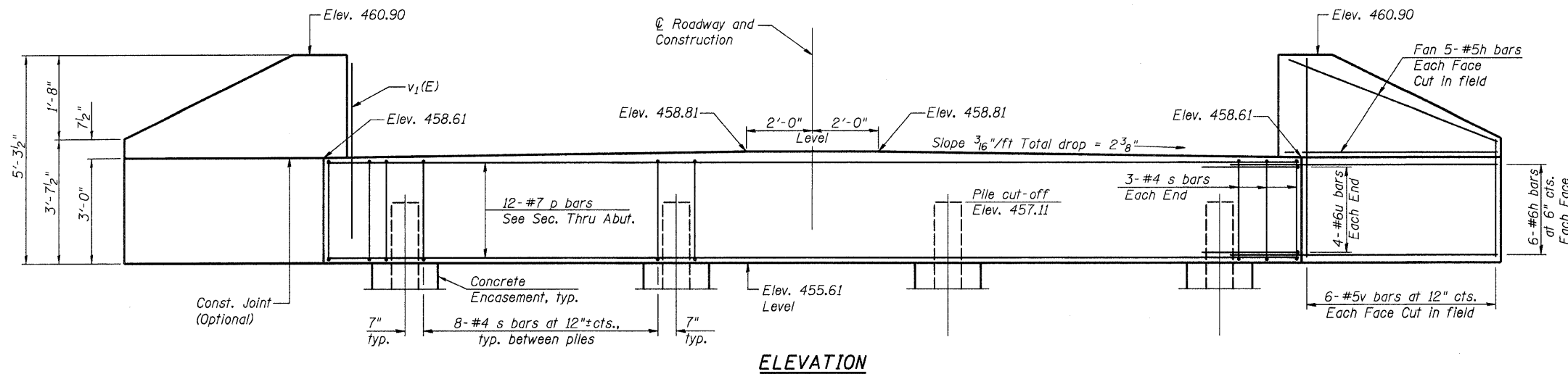
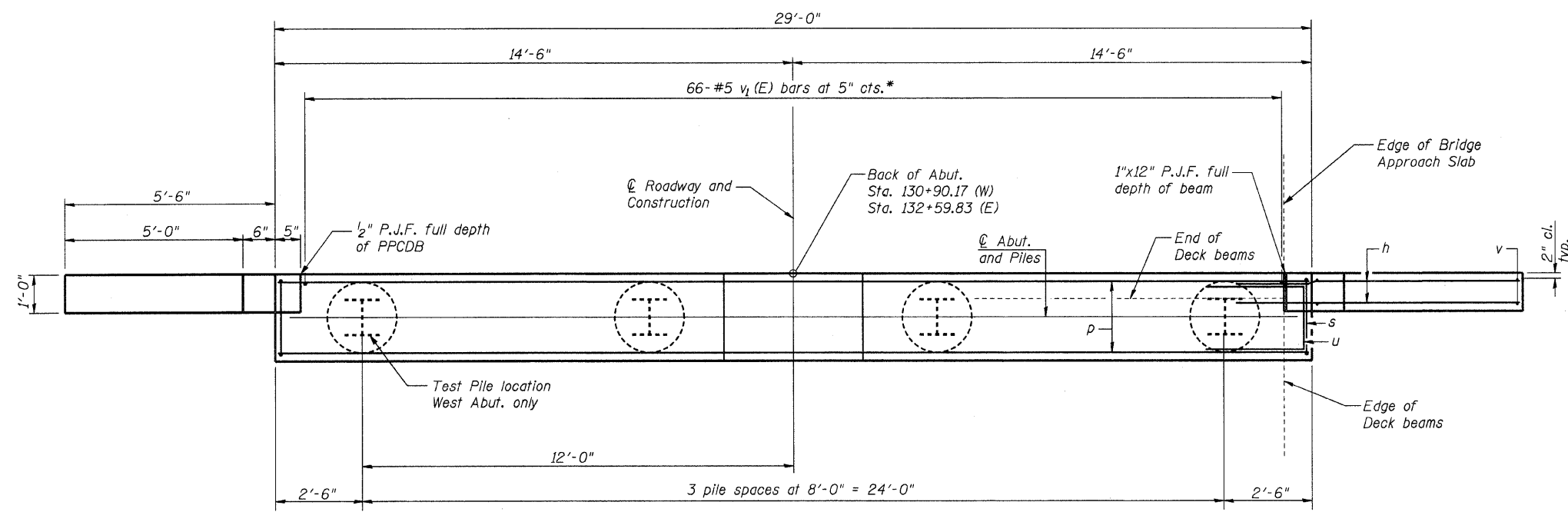
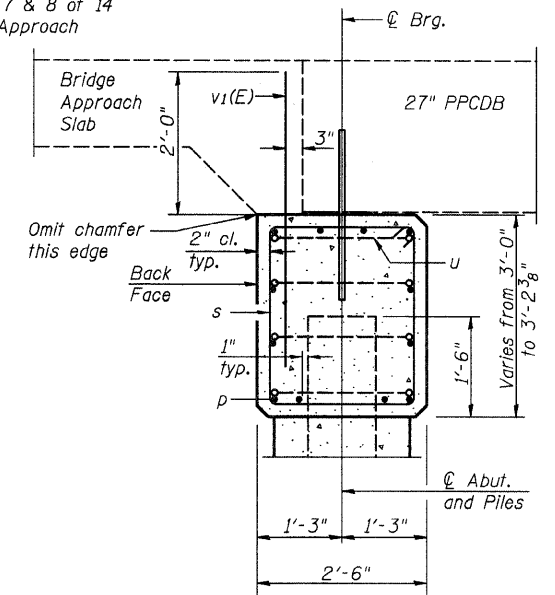


STATE OF ILLINOIS  
DEPARTMENT OF TRANSPORTATION



See Sheets 7 & 8 of 14  
for Bridge Approach  
Slab details.

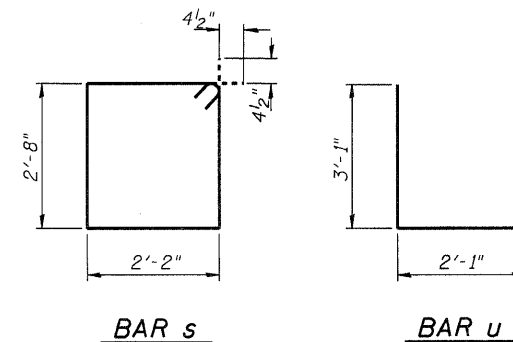


**PILE DATA (2 ABUTMENTS)**

Type: Steel HP12x53  
 Nominal Required Bearing: 419 kips  
 Factored Resistance Available: 210 kips  
 Est. Length: 30 foot/pile  
 No. Production Piles: 7  
 No. Test Piles: 1

**GENERAL NOTES**

- All exposed edges shall have standard 3/4" chamfer, unless otherwise noted.
- All clearances between rebar and form surface shall be 2", unless otherwise noted.
- Space reinforcement in cap to miss PPCDB dowel rods.
- The Steel H-piles shall be according to AASHTO M270 Grade 50.
- The Contractor shall drive one (1) Steel HP12x53 Test Pile in a permanent location at the West abutment as directed by the Engineer before ordering the remainder of the piles.
- The Test Pile shall be driven to 110 percent of the Nominal Required Bearing indicated in the pile data information.



**BILL OF MATERIAL  
FOR ONE ABUTMENT**

Bar	No.	Size	Length	Shape
h	44	#5	9'-0"	—
p	12	#7	28'-8"	—
s	30	#4	10'-5"	□
u	8	#6	8'-3"	—
v	24	#5	5'-0"	—
		Concrete Structures	Cu Yd	10.3
		Reinforcement Bars	Pound	1550
		Furnishing Steel Piles, HP12x53	Foot	W. Abut. 90 E. Abut. 120
		Driving Piles	Foot	W. Abut. 90 E. Abut. 120
		Test Pile, Steel HP12x53	Each	W. Abut. 1 E. Abut. 0
		Concrete Encasement	Cu Yd	1.4

For details of piles and Concrete Encasement, see Sheet 12 of 14.

\*#5v<sub>1</sub>(E) bars included with Bridge Approach Slab

**ABUTMENT DETAILS  
STRUCTURE NO. 013-3234**

F.A.S. RTE.	SECTION	COUNTY	TOTAL SHEETS	SHEET NO.
801	09-00082-00-BR	CLAY	14	10
				CONTRACT NO. 95613
FED. ROAD DIST. NO. 7 ILLINOIS FED. AID PROJECT				

12/15/2009 RAAI #50609

AI-0

10-1-08