

AMERICAN RECOVERY AND REINVESTMENT ACT

F.A.S. 662 EXTENSION OVER EMBARRAS RIVER TO IL 130 CUMBERLAND COUNTY, ILLINOIS

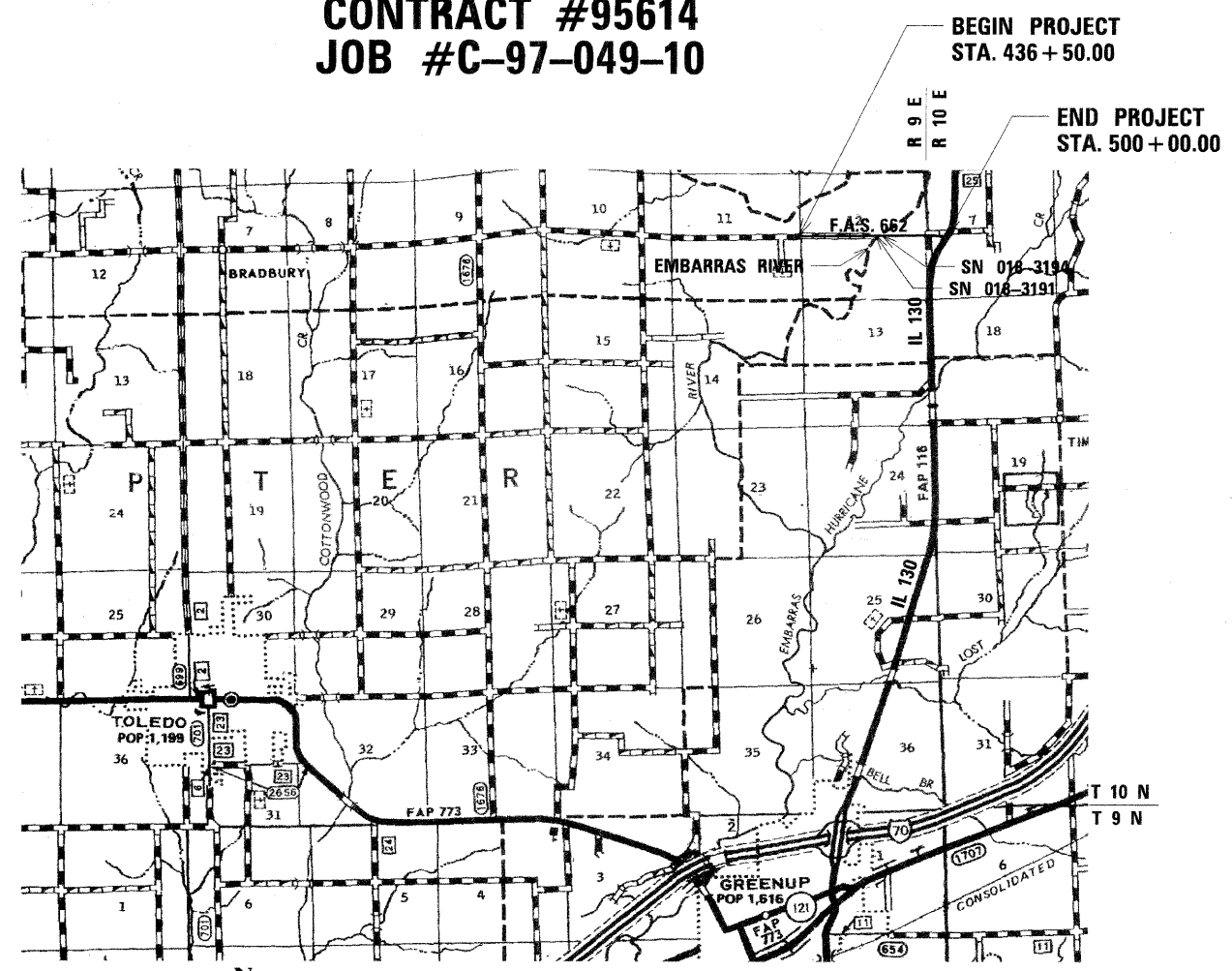
SECTION #09-00061-01-RS
PROJECT #ARA-RS-662(102)
CONTRACT #95614
JOB #C-97-049-10

INDEX OF SHEETS

- 1 COVER SHEET
- 2 GENERAL NOTES
- 3 SUMMARY OF QUANTITIES/SCHEDULE OF QUANTITIES
- 4 TYPICAL SECTION
- 5 GEOMETRIC CONTROL SHEET
- 6 SURVEY TIES / BENCHMARKS
- 7-9 PLAN
- 10 INTERSECTION DETAIL
- 11 MISCELLANEOUS DETAILS-IL RTE. 130 INTERSECTION
- 12 MISCELLANEOUS DETAILS-STRUCTURE OVER EMBARRAS RIVER
- 13 MISCELLANEOUS DETAILS-EMBARRAS RIVER OVERFLOW STRUCTURE
- 14 HMA OVERLAY ON BRIDGE

LIST OF STANDARDS

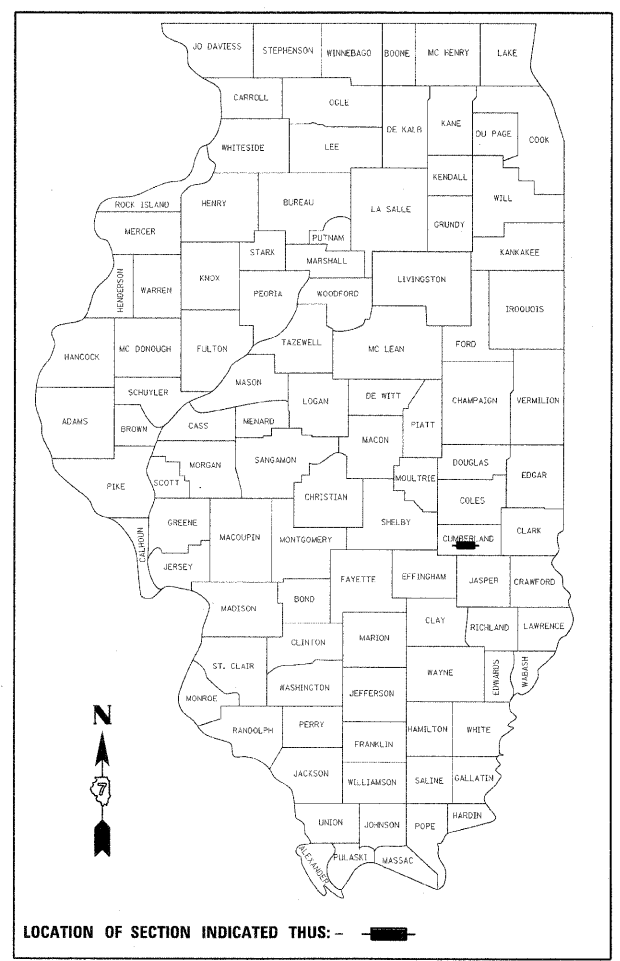
- 000001-05 STANDARD SYMBOLS, ABBREVIATIONS AND PATTERNS
- 701001-02 OFF-RD OPERATIONS, 2L, 2W, MORE THAN 4.5M (15') AWAY
- 701006-03 OFF-RD OPERATIONS, 2L, 2W, 4.5M (15') TO 600MM (24") FROM EDGE OF PAVEMENT
- 701201-03 LANE CLOSURE, 2L, 2W DAY ONLY, FOR SPEEDS >= 45 MPH
- 701901-01 TRAFFIC CONTROL DEVICES
- B.L.R. 21-8 TYPICAL APPLICATION OF TRAFFIC CONTROL DEVICES FOR CONSTRUCTION ON RURAL LOCAL HIGHWAYS
- B.L.R. 22-6 TYPICAL APPLICATION OF TRAFFIC CONTROL DEVICES FOR CONSTRUCTION ON RURAL LOCAL HIGHWAYS (2L2W-ROAD CLOSED TO THRU TRAFFIC)



AREA LOCATION PLAN

NOT TO SCALE

FUNCTIONAL CLASSIFICATION = MAJOR COLLECTOR
 DESIGN DESIGNATION ADT = 500 (2028)
 DESIGN SPEED = 40 mph
 GROSS LENGTH OF PROJECT = 1.20 mi. (6,350 FT)
 NET LENGTH OF PROJECT = 1.20 mi. (6,350 FT)



LOCATION OF SECTION INDICATED THUS: - [Symbol] -

STATE OF ILLINOIS
DEPARTMENT OF TRANSPORTATION

APPROVED: 12/30/2009
[Signature]
CUMBERLAND COUNTY, COUNTY ENGINEER

PASSED: 1/6 2010
[Signature]
DISTRICT 7 ENGINEER OF LOCAL ROADS AND STREETS

RELEASING FOR BID
BASED ON LIMITED REVIEW

1/6 2010
[Signature]
DEPUTY DIRECTOR OF HIGHWAYS, REGION 4 ENGINEER

PROJECT ENGINEER - MICHAEL MENDENHALL (217)788-2450
 PROJECT MANAGER - JIM MOLL (217)788-2450

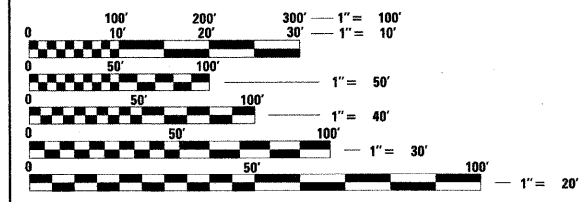


Michael N. Mendenhall
SIGNATURE
 12/23/2009
DATE
 LIC. EXP. DATE: 11/30/2011



Know what's below.
Call before you dig.

J.U.L.I.E.
JOINT UTILITY LOCATION INFORMATION FOR EXCAVATION
1-800-892-0123
OR 811



FULL SIZE PLANS HAVE BEEN PREPARED USING STANDARD ENGINEERING SCALES. REDUCED SIZED PLANS WILL NOT CONFORM TO STANDARD SCALES. IN MAKING MEASUREMENTS ON REDUCED PLANS, THE ABOVE SCALES MAY BE USED.

UTILITY NOTE

THE LOCATIONS OF THOSE BURIED AND ABOVEGROUND UTILITIES SHOWN ARE APPROXIMATE, ARE SHOWN FOR CONTRACTOR INFORMATIONAL USE ONLY, AND ARE NOT TO BE REFERENCED FOR CONSTRUCTION PURPOSES. THE IMPLIED PRESENCE OR ABSENCE OF UTILITIES IS NOT TO BE CONSTRUED BY THE OWNER, ENGINEER, CONTRACTOR, OR SUBCONTRACTORS TO BE AN ACCURATE AND COMPLETE REPRESENTATION OF UTILITIES THAT MAY OR MAY NOT EXIST ON THE CONSTRUCTION SITE. BURIED AND ABOVEGROUND UTILITY LOCATION, IDENTIFICATION, AND MARKING ARE THE SOLE RESPONSIBILITY OF THE CONTRACTOR. REROUTING, DISCONNECTION, PROTECTION, ETC. OF ANY UTILITIES MUST BE COORDINATED BETWEEN THE CONTRACTOR, UTILITY COMPANY, AND OWNER. SITE SAFETY, INCLUDING THE AVOIDANCE OF HAZARDS ASSOCIATED WITH BURIED AND ABOVEGROUND UTILITIES, REMAIN THE SOLE RESPONSIBILITY OF THE CONTRACTOR.