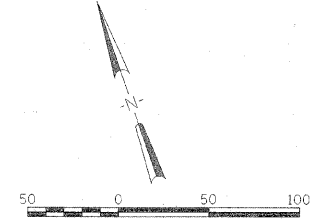
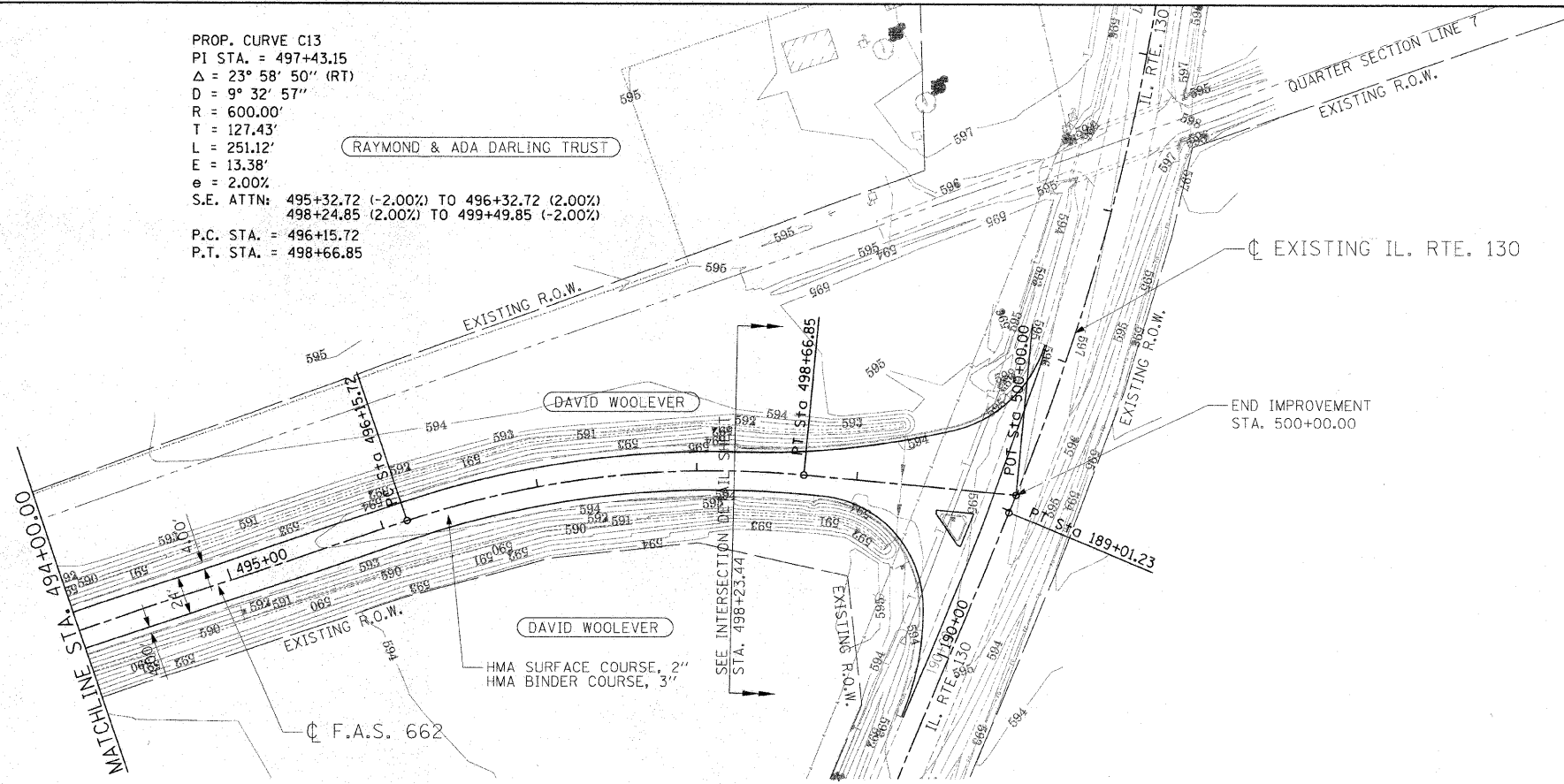


PROP. CURVE C13
 PI STA. = 497+43.15
 $\Delta = 23^\circ 58' 50''$ (RT)
 $D = 9^\circ 32' 57''$
 $R = 600.00'$
 $T = 127.43'$
 $L = 251.12'$
 $E = 13.38'$
 $e = 2.00\%$
 S.E. ATTN: 495+32.72 (-2.00%) TO 496+32.72 (2.00%)
 498+24.85 (2.00%) TO 499+49.85 (-2.00%)
 P.C. STA. = 496+15.72
 P.T. STA. = 498+66.85



© Copyright Hanson Professional Services Inc. 2009
HANSON
 Hanson Professional Services Inc.

LAYOUT	MNM/DJP	10/30/07
DRAWN	DJP	10/20/07
REVIEWED	MNM	10/24/08

FILE NAME =	USER NAME = Pop00936	DESIGNED - MNM/DJP	REVISED -
In:\21jobs\01\2021B\CADD\Road\Sheet\C-708.dgn		DRAWN - DJP	REVISED -
	PLOT SCALE = 50.0000' / in.	CHECKED - MNM	REVISED -
	PLOT DATE = 12/23/2009	DATE - 10/22/09	REVISED -

**STATE OF ILLINOIS
 DEPARTMENT OF TRANSPORTATION**

PLAN SHEET

SCALE: SHEET NO. 3 OF 3 SHEETS STA. 494+00.00 TO STA. END

F.A.S. RTE.	SECTION	COUNTY	TOTAL SHEETS	SHEET NO.
662	09-00061-01-R5	CUMBERLAND	14	9
CONTRACT NO. 95614				
FED. ROAD DIST. NO. [ILLINOIS] FED. AID PROJECT				