

# AMERICAN RECOVERY AND REINVESTMENT ACT

## F.A.S. 662 EXTENSION OVER EMBARRAS RIVER TO IL 130 CUMBERLAND COUNTY, ILLINOIS

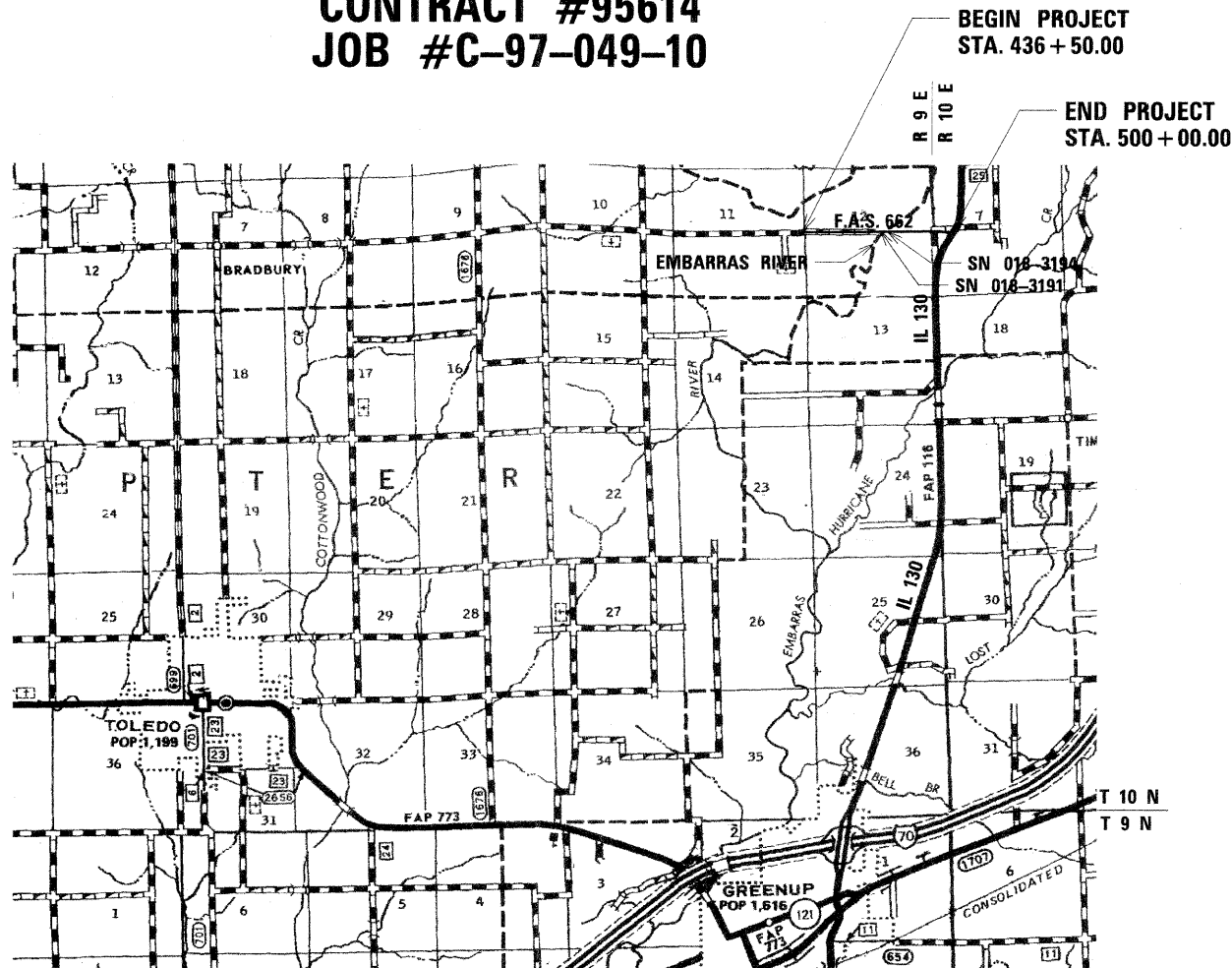
**SECTION #09-00061-01-RS**  
**PROJECT #ARA-RS-662(102)**  
**CONTRACT #95614**  
**JOB #C-97-049-10**

### INDEX OF SHEETS

- 1 COVER SHEET
- 2 GENERAL NOTES
- 3 SUMMARY OF QUANTITIES/SCHEDULE OF QUANTITIES
- 4 TYPICAL SECTION
- 5 GEOMETRIC CONTROL SHEET
- 6 SURVEY TIES / BENCHMARKS
- 7-9 PLAN
- 10 INTERSECTION DETAIL
- 11 MISCELLANEOUS DETAILS-IL RTE. 130 INTERSECTION
- 12 MISCELLANEOUS DETAILS-STRUCTURE OVER EMBARRAS RIVER
- 13 MISCELLANEOUS DETAILS-EMBARRAS RIVER OVERFLOW STRUCTURE
- 14 HMA OVERLAY ON BRIDGE

### LIST OF STANDARDS

- |             |  |
|-------------|--|
| 000001-05   | STANDARD SYMBOLS, ABBREVIATIONS AND PATTERNS   |
| 701001-02   | OFF-RD OPERATIONS, 2L, 2W, MORE THAN 4.5M (15') AWAY   |
| 701006-03   | OFF-RD OPERATIONS, 2L, 2W, 4.5M (15') TO 600MM (24") FROM EDGE OF PAVEMENT   |
| 701201-03   | LANE CLOSURE, 2L, 2W DAY ONLY, FOR SPEEDS >= 45 MPH  |
| 701901-01   | TRAFFIC CONTROL DEVICES  |
| B.L.R. 21-8 | TYPICAL APPLICATION OF TRAFFIC CONTROL DEVICES FOR CONSTRUCTION ON RURAL LOCAL HIGHWAYS                                    |
| B.L.R. 22-6 | TYPICAL APPLICATION OF TRAFFIC CONTROL DEVICES FOR CONSTRUCTION ON RURAL LOCAL HIGHWAYS (2L2W-ROAD CLOSED TO THRU TRAFFIC) |



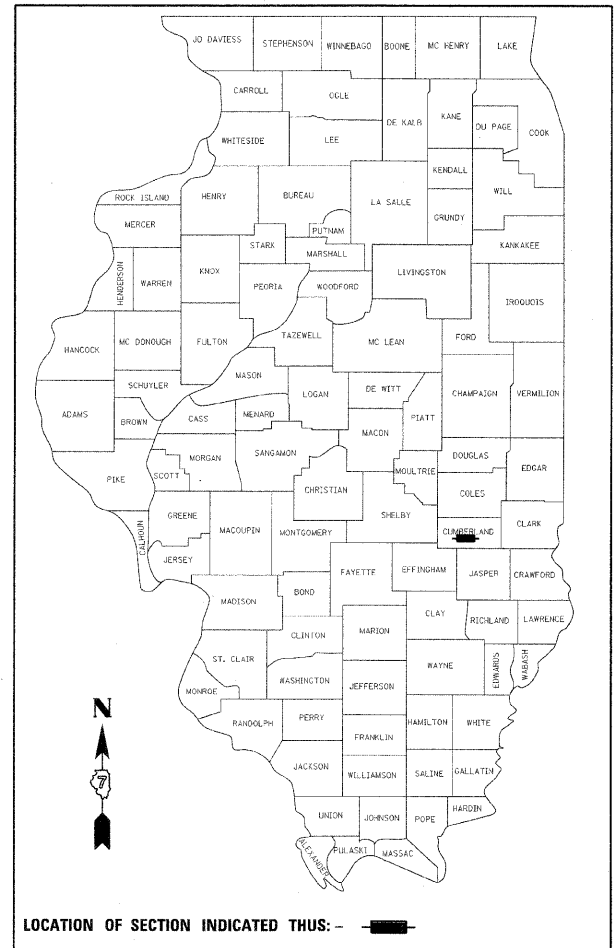
**AREA LOCATION PLAN**

NOT TO SCALE

FUNCTIONAL CLASSIFICATION = MAJOR COLLECTOR  
 DESIGN DESIGNATION ADT = 500 (2028)  
 DESIGN SPEED = 40 mph  
 GROSS LENGTH OF PROJECT = 1.20 mi. (6,350 FT)  
 NET LENGTH OF PROJECT = 1.20 mi. (6,350 FT)



*Michael N. Mendenhall*  
 SIGNATURE  
 12/23/2009  
 DATE  
 LIC. EXP. DATE: 11/30/2011



LOCATION OF SECTION INDICATED THUS: - [Symbol] -

STATE OF ILLINOIS  
 DEPARTMENT OF TRANSPORTATION

APPROVED: *12/30/2009*  
 [Signature]  
 CUMBERLAND COUNTY, COUNTY ENGINEER

PASSED: *1/6 2010*  
 [Signature]  
 DISTRICT 7 ENGINEER OF LOCAL ROADS AND STREETS

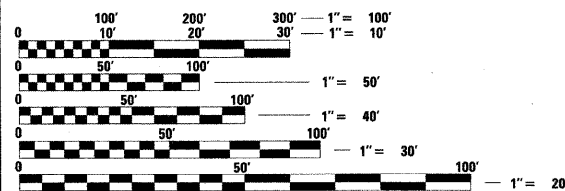
RELEASING FOR BID  
 BASED ON LIMITED REVIEW  
*1/6 2010*  
 [Signature]  
 DEPUTY DIRECTOR OF HIGHWAYS, REGION 4 ENGINEER

PROJECT ENGINEER - MICHAEL MENDENHALL (217)788-2450  
 PROJECT MANAGER - JIM MOLL (217)788-2450



Know what's below.  
 Call before you dig.

J.U.L.I.E.  
 JOINT UTILITY LOCATION INFORMATION FOR EXCAVATION  
 1-800-892-0123  
 OR 811



FULL SIZE PLANS HAVE BEEN PREPARED USING STANDARD ENGINEERING SCALES. REDUCED SIZED PLANS WILL NOT CONFORM TO STANDARD SCALES. IN MAKING MEASUREMENTS ON REDUCED PLANS, THE ABOVE SCALES MAY BE USED.

### UTILITY NOTE

THE LOCATIONS OF THOSE BURIED AND ABOVEGROUND UTILITIES SHOWN ARE APPROXIMATE, ARE SHOWN FOR CONTRACTOR INFORMATIONAL USE ONLY, AND ARE NOT TO BE REFERENCED FOR CONSTRUCTION PURPOSES. THE IMPLIED PRESENCE OR ABSENCE OF UTILITIES IS NOT TO BE CONSTRUED BY THE OWNER, ENGINEER, CONTRACTOR, OR SUBCONTRACTORS TO BE AN ACCURATE AND COMPLETE REPRESENTATION OF UTILITIES THAT MAY OR MAY NOT EXIST ON THE CONSTRUCTION SITE. BURIED AND ABOVEGROUND UTILITY LOCATION, IDENTIFICATION, AND MARKING ARE THE SOLE RESPONSIBILITY OF THE CONTRACTOR. REROUTING, DISCONNECTION, PROTECTION, ETC. OF ANY UTILITIES MUST BE COORDINATED BETWEEN THE CONTRACTOR, UTILITY COMPANY, AND OWNER. SITE SAFETY, INCLUDING THE AVOIDANCE OF HAZARDS ASSOCIATED WITH BURIED AND ABOVEGROUND UTILITIES, REMAIN THE SOLE RESPONSIBILITY OF THE CONTRACTOR.

GENERAL NOTES

- 1 THE CONTRACTOR SHALL BE RESPONSIBLE FOR PROTECTING UTILITY PROPERTY FROM CONSTRUCTION OPERATIONS AS OUTLINED IN ARTICLE 107.31 OF THE STANDARD SPECIFICATIONS. MEMBERS OF JULIE KNOWN TO BE WITHIN THE LIMITS OF THE IMPROVEMENT ARE:  
  
COLES-MOULTRIE ELECTRIC COOPERATIVE  
MEDIACOM  
VERIZON NORTH, INC.  
FOR CONTACTS, SEE CONTACT INFORMATION BELOW.
- 2 ACCESS TO ALL ENTRANCES SHALL BE MAINTAINED AT ALL TIMES.
- 3 IN ADDITION TO THE REQUIREMENTS OF ARTICLE 107.16, THE CONTRACTOR SHALL PROTECT THE SURFACE OF ALL BRIDGE DECKS AND BRIDGE APPROACH PAVEMENTS IN A MANNER SATISFACTORY TO THE ENGINEER BEFORE ANY EQUIPMENT IS ALLOWED TO CROSS THE STRUCTURE. PROTECTION SHALL BE PROVIDED FOR ALL EQUIPMENT, AS DEFINED IN ARTICLE 101.17, REGARDLESS IF TRACK MOUNTED OR WHEELED.
- 4 EXCAVATION IN GRAVEL OR OIL AND CHIP ROADWAYS IS TO BE PAID AS EARTH EXCAVATION.
- 5 THESE PLANS HAVE BEEN PREPARED USING STANDARD SYMBOLS AS INDICATED IN THESE PLANS, AND THEY SHALL TAKE PRECEDENCE OVER THOSE SHOWN ON STANDARD 000001 IF THERE IS A CONFLICT.
- 6 ANY REFERENCE TO A STANDARD IN THESE PLANS SHALL BE INTERPRETED TO MEAN THE EDITION AS INDICATED BY THE COPY OF THE STANDARD INCLUDED IN THESE PLANS.
- 7 ELEVATION DATA IS BASED ON NATIONAL GEODETIC VERTICAL DATUM 1929 (NGVD29).

WORK TO BE COMPLETED BY CUMBERLAND COUNTY

PAVEMENT STRIPING  
SHOULDER RE-SHAPING  
CONSTRUCTION LAYOUT

UTILITY CONTACT INFORMATION

COLES-MOULTRIE ELECTRIC COOPERATIVE  
ATTENTION: MR. STEVE UNDERWOOD  
DIRECTOR OF ENGINEERING  
104 DEWITT AVE. E. MATTOON  
P.O. BOX 709  
MATTOON, ILLINOIS 61938-0709  
PHONE: (217)258-5803 OR (217)235-0341  
TOLL FREE: 1(888)661-2632

MEDIACOM  
ATTENTION: MR. DEL LINGAFELTER  
4290 BLUESTEM ROAD  
CHARLESTON, ILLINOIS 61920  
PHONE: (217)348-5533 EXT. 9

VERIZON NORTH, INC.  
ATTENTION: MS. MARY RUTH WILLIS  
110 EAST MONROE  
P.O. BOX 2675  
BLOOMINGTON, ILLINOIS 61702-2675  
PHONE: (309)827-1617



LAYOUT	MNM/DJP	10/20/07
DRAWN	DJP	10/20/07
DESIGNED	MNM	10/20/07

FILE NAME =	USER NAME = Pop00836	DESIGNED - MNM/DJP	REVISED -
I:\01\jobs\01e2021B\CADD\Road\Sheet\C-102.dwg		DRAWN - DJP	REVISED -
	PLOT SCALE = 1:8000 / 1" = 160'	CHECKED - MNM	REVISED -
	PLOT DATE = 12/23/2009	DATE - 10/22/09	REVISED -

**STATE OF ILLINOIS  
DEPARTMENT OF TRANSPORTATION**

**GENERAL NOTES**

SCALE: SHEET NO. 1 OF 1 SHEETS

F.A.S. RTE.	SECTION	COUNTY	TOTAL SHEETS	SHEET NO.
662	09-00061-01-RS	CUMBERLAND	14	2
CONTRACT NO. 95614				
FED. ROAD DIST. NO. ILLINOIS FED. AID PROJECT				

# SUMMARY OF QUANTITIES

CODE #	ITEM	UNIT	TOTAL QUANTITY
20200100	EARTH EXCAVATION	CU YD	171
* 40603085	HOT-MIX ASPHALT BINDER COURSE, IL-19.0, N70	TON	2630
40603315	HOT-MIX ASPHALT SURFACE COURSE, MIX "C", N70	TON	1834
40600010	BITUMINOUS MATERIALS (PRIME COAT)	GALLON	1566
58100200	WATERPROOFING MEMBRANE SYSTEM	SQ YD	617
67100100	MOBILIZATION	L SUM	1
70100450	TRAFFIC CONTROL AND PROTECTION, STANDARD 701201	L SUM	1
* 70103700	TRAFFIC CONTROL COMPLETE	L SUM	1

# SCHEDULE OF QUANTITIES

EARTH EXCAVATION			
LOCATION	STATION (F.A.S. 662)		CU YD
WEST APPR. (SN 018-3191)	467+66.00 TO 468+21.00		9
EAST APPR. (SN 018-3191)	473+29.00 TO 473+84.00		9
WEST ABUT. (SN 018-3194)	476+59.50 TO 476+69.50		1
EAST ABUT. (SN 018-3194)	478+54.50 TO 478+64.50		1
IL 130 INTERSECTION	497+63.44 TO 499+86.27		151
<b>PROJECT TOTAL</b>			<b>171</b>

HOT-MIX ASPHALT BINDER COURSE, IL-19.0, N70									
LOCATION	STATION (F.A.S. 662)	LENGTH (FT)	WIDTH (FT)	AREA (SQ YD)	DEPTH (IN)	LBS/SQ YD-IN	TONS		
ROADWAY	436+50.00 TO 468+21.00	3171.00	24.00	8456.0	3	112	1421		
ROADWAY	473+29.00 TO 476+69.50	340.50	24.00	908.0	3	112	153		
ROADWAY	478+54.50 TO 498+23.44	1968.94	24.00	5250.5	3	112	882		
IL 130 INTERSECTION	498+23.44 TO 499+86.27			1037.0	3	112	174		
<b>PROJECT TOTAL</b>								<b>2630</b>	

HOT-MIX ASPHALT SURFACE COURSE, MIX "C", N70									
LOCATION	STATION (F.A.S. 662)	LENGTH (FT)	WIDTH (FT)	AREA (SQ YD)	DEPTH (IN)	LBS/SQ YD-IN	TONS		
ROADWAY	436+50.00 TO 468+21.00	3171.00	24.00	8456.0	2	112	947		
ROADWAY	473+29.00 TO 476+69.50	320.50	24.00	854.7	2	112	96		
ROADWAY	476+49.50 TO 476+69.50	20.00	24.00	53.3	2.5	112	7		
ROADWAY	478+54.50 TO 478+74.50	20.00	24.00	53.3	2.5	112	7		
ROADWAY	478+74.50 TO 498+23.44	1948.94	24.00	5197.2	2	112	582		
IL 130 INTERSECTION	498+23.44 TO 499+86.27			1037.0	2	112	116		
<b>PROJECT TOTAL</b>								<b>1755</b>	

BITUMINOUS MATERIALS (PRIME COAT)							
LOCATION	STATION (F.A.S. 662)	LENGTH (FT)	WIDTH (FT)	AREA (SQ YD)	GAL/SQ YD	GALLONS	
ROADWAY	436+50.00 TO 468+21.00	3171.00	24.00	8456.0	0.1	846	
ROADWAY	473+29.00 TO 476+69.50	340.50	24.00	908.0	0.1	91	
ROADWAY	478+54.50 TO 498+23.44	1968.94	24.00	5250.5	0.1	525	
IL 130 INTERSECTION	498+23.44 TO 499+86.27			1037.0	0.1	104	
<b>PROJECT TOTAL</b>							<b>1566</b>

\* PAY ITEM REQUIRES SPECIAL PROVISION



LAYOUT: MNM/DJP 10/10/07  
 DRAWN: DJP 10/10/07  
 REVIEWED: MNM 10/20/08

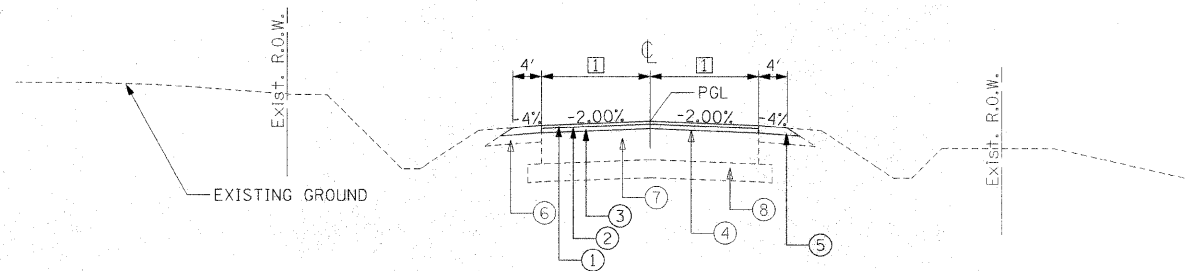
FILE NAME =	USER NAME = Pop00836	DESIGNED - MNM/DJP	REVISED -
I:\01\jobs\01e20210\CADD\Road\Sheet\C-601.dgn		DRAWN - DJP	REVISED -
PLOT SCALE = 1/8000'' / in.		CHECKED - MNM	REVISED -
PLOT DATE = 12/23/2009		DATE - 10/22/09	REVISED -

STATE OF ILLINOIS  
 DEPARTMENT OF TRANSPORTATION

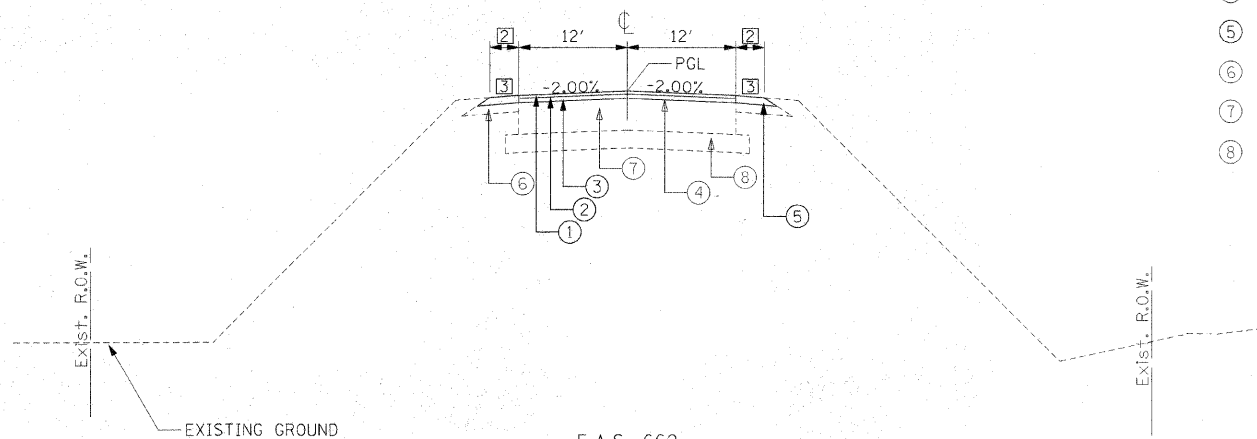
SUMMARY OF QUANTITIES / SCHEDULE OF QUANTITIES

SCALE: SHEET NO. 1 OF 1 SHEETS

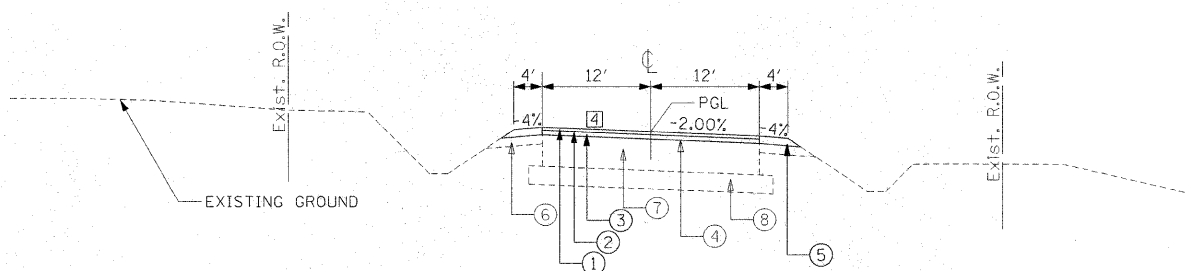
F.A.S. RTE. 662	SECTION 09-00061-01-RS	COUNTY CUMBERLAND	TOTAL SHEETS 14	SHEET NO. 3
FED. ROAD DIST. NO. ILLINOIS FED. AID PROJECT			CONTRACT NO. 95614	



F.A.S. 662  
BEGINNING OF PROJECT STA. 436+50.00 TO STA. 450+00.00  
STA. 479+00.00 TO STA. 495+32.72



F.A.S. 662  
STA. 450+00.00 TO STA. 479+00.00  
(BRIDGE OMISSION STA. 468+21.00 TO STA. 473+29.00)  
(BRIDGE OMISSION STA. 476+69.50 TO STA. 478+54.50)



F.A.S. 662  
STA. 495+32.72 TO STA. 498+23.44

- ITEM
- ① HOT-MIX ASPHALT SURFACE COURSE, MIX "C", N70-2"
  - ② BITUMINOUS MATERIALS (PRIME COAT)
  - ③ HOT-MIX ASPHALT BINDER COURSE, IL-19.0, N70-3"
  - ④ EXISTING SURFACE TREATMENT (CLASS "A-1")
  - ⑤ AGGREGATE SHOULDERS, TYPE B 5" - BY CUMBERLAND COUNTY
  - ⑥ EXISTING AGGREGATE SHOULDERS, TYPE B 6"
  - ⑦ EXISTING AGGREGATE BASE COURSE, TYPE B 18"
  - ⑧ EXISTING PROCESSING LIME STABILIZATION SOIL MIXTURE, 12"

HMA MIXTURE REQUIREMENTS		
LOCATION	F.A.S. 662	F.A.S. 662
MIXTURE USE (S):	BINDER COURSE	SURFACE COURSE
PG:	PG 64-22	PG 64-22
DESIGN AIR VOIDS:	4.0% @ N DESIGN = 70	4.0% @ N DESIGN = 70
MIXTURE COMPOSITION (GRADATION MIXTURE)	IL 19.0	IL 9.5
FRICTION AGGREGATE	MIX "B"	MIX "C"

- PAVEMENT WIDTHS
- ① STATION 436+50.00 TO STATION 437+00.00  
TRANSITION 10.00' TO 12.00'
  - STATION 437+00.00 TO STATION 450+00.00 = 12.00'
  - STATION 479+00.00 TO STATION 495+32.72 = 12.00'

- SHOULDER TRANSITIONS
- ② STATION 450+00.00 TO STATION 467+80.00 = 4.00'
  - STATION 467+80.00 TO STATION 468+05.00  
TRANSITION 4.00' TO 3.00'
  - STATION 468+05.00 TO STATION 468+21.00 = 3.00'
  - STATION 473+29.00 TO STATION 473+45.00 = 3.00'
  - STATION 473+45.00 TO STATION 473+70.00  
TRANSITION 3.00' TO 4.00'
  - STATION 473+70.00 TO STATION 476+30.00 = 4.00'
  - STATION 476+30.00 TO STATION 476+55.00  
TRANSITION 4.00' TO 3.00'
  - STATION 476+55.00 TO STATION 476+69.50 = 3.00'
  - STATION 478+54.50 TO STATION 478+65.00 = 3.00'
  - STATION 478+65.00 TO STATION 478+90.00  
TRANSITION 3.00' TO 4.00'
  - STATION 478+90.00 TO STATION 479+00.00 = 4.00'

- SHOULDER CROSS SLOPE TRANSITIONS
- ③ STATION 450+00.00 TO STATION 467+55.00 = -4.00%
  - STATION 467+55.00 TO STATION 468+05.00  
TRANSITION -4.00% TO -2.00%
  - STATION 468+05.00 TO STATION 468+21.00 = -2.00%
  - STATION 473+29.00 TO STATION 473+45.00 = -2.00%
  - STATION 473+45.00 TO STATION 473+95.00  
TRANSITION -2.00% TO -4.00%
  - STATION 473+95.00 TO STATION 476+05.00 = -4.00%
  - STATION 476+05.00 TO STATION 476+55.00  
TRANSITION -4.00% TO -2.00%
  - STATION 476+55.00 TO STATION 476+69.50 = -2.00%
  - STATION 478+54.50 TO STATION 478+65.00 = -2.00%
  - STATION 478+65.00 TO STATION 479+15.00  
TRANSITION -2.00% TO -4.00%
  - STATION 479+15.00 TO STATION 479+00.00 = -4.00%

- PAVEMENT CROSS SLOPE TRANSITIONS
- ④ STATION 495+32.72 TO STATION 496+57.72  
TRANSITION -2.00% TO 2.00%
  - STATION 496+57.72 TO STATION 498+23.44 = 2.00%



LAYOUT: MNM/DJP 10/23/09  
 DRAWN: DJP 10/23/09  
 CHECKED: MNM 10/23/09

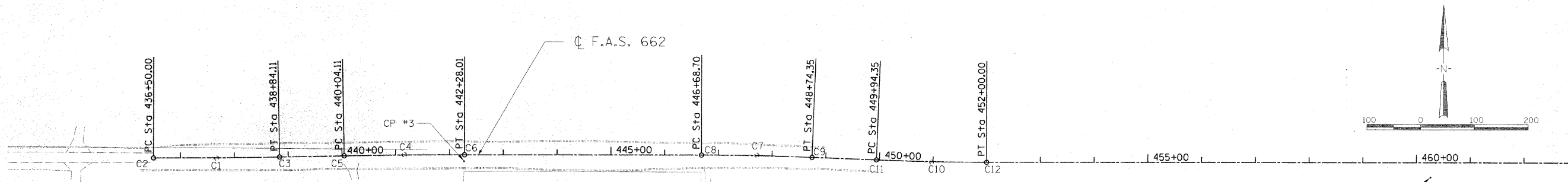
FILE NAME = I:\01\jobs\01s2021B\CADD\Road\Sheet\C-502.dgn	USER NAME = Pop00936	DESIGNED - MNM/DJP	REVISED -
PLOT SCALE = 10.0000' / 1"	CHECKED - MNM	DRAWN - DJP	REVISED -
PLOT DATE = 12/23/2009	DATE - 10/22/09		REVISED -

STATE OF ILLINOIS  
DEPARTMENT OF TRANSPORTATION

TYPICAL SECTION

SCALE: SHEET NO. 1 OF 1 SHEETS STA. 436+50.00 TO STA. 500+00.00

F.A.S. RTE.	SECTION	COUNTY	TOTAL SHEETS	SHEET NO.
662	09-00061-01-RS	CUMBERLAND	14	4
CONTRACT NO. 95614				
FED. ROAD DIST. NO. ILLINOIS FED. AID PROJECT				



**CURVE C1**

C1	PI STA. = 437+67.06
	$\Delta = 01^\circ 07' 04''$ (LT)
	D = $0^\circ 28' 39''$
	R = 12,000.00'
	T = 117.06'
	L = 234.11'
	E = 0.57'
C2	P.C. STA = 436+50.00
C3	P.T. STA = 438+84.11

**CURVE C4**

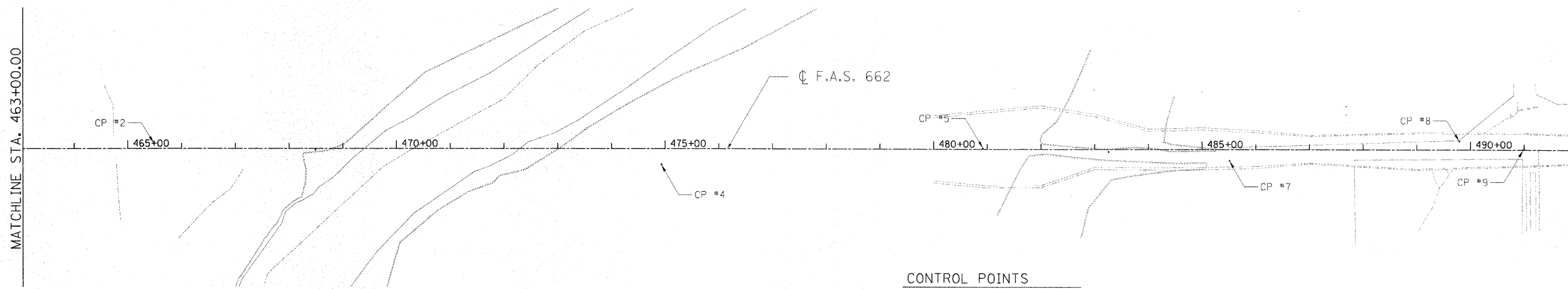
C4	PI STA. = 441+16.06
	$\Delta = 1^\circ 04' 09''$ (RT)
	D = $0^\circ 28' 39''$
	R = 12,000.00'
	T = 111.95'
	L = 223.90'
	E = 0.52'
C5	P.C. STA = 440+04.11
C6	P.T. STA = 442+28.01

**CURVE C7**

C7	PI STA. = 447+71.54
	$\Delta = 2^\circ 06' 42''$ (RT)
	D = $1^\circ 01' 37''$
	R = 5,580.00'
	T = 102.84'
	L = 205.65'
	E = 0.95'
C8	P.C. STA = 446+68.70
C9	P.T. STA = 448+74.35

**CURVE C10**

C10	PI STA. = 450+97.19
	$\Delta = 2^\circ 06' 42''$ (LT)
	D = $1^\circ 01' 37''$
	R = 5,580.00'
	T = 102.84'
	L = 205.65'
	E = 0.95'
C11	P.C. STA = 449+94.35
C12	P.T. STA = 452+00.00



**CONTROL POINTS**

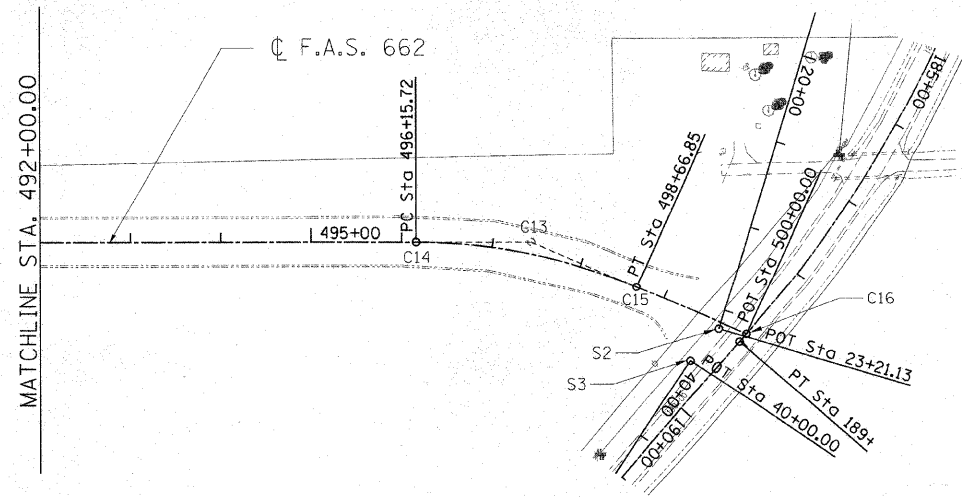
POINT	DESCRIPTION	STATION, OFFSET	ELEVATION	NORTHING	EASTING
CP #1	IRON PIN @ END OF LEVEE	STA. 460+26.17, 27.64' RT.	ELEV: 546.57	24,946.24	34,633.58
CP #2	IRON PIN	STA. 465+48.71, 9.72' LT.	ELEV: 544.68	24,987.32	35,155.85
CP #3	IRON PIN		ELEV: 567.47	24,961.03	32,834.71
CP #4	IRON PIN	STA. 474+93.38, 29.24' RT.	ELEV: 544.23	24,955.12	36,100.77
CP #5	IRON PIN	STA. 480+92.08, 1.36' LT.	ELEV: 545.90	24,990.00	36,699.24
CP #6	IRON PIN		ELEV: 571.96	24,957.90	31,297.53
CP #7	IRON PIN	STA. 485+51.24, 20.78' RT.	ELEV: 594.37	24,971.14	37,158.54
CP #8	IRON PIN	STA. 489+79.28, 15.76' LT.	ELEV: 587.97	25,010.75	37,586.31
CP #9	IRON PIN	STA. 490+98.16, 0.62' LT.	ELEV: 588.98	24,996.45	37,705.30

**F.A.S. 662**

POINT	NORTHING	EASTING
C1	24,963.21	32,374.52
C2	24,962.47	32,257.46
C3	24,966.23	32,491.54
C4	24,972.22	32,723.41
C5	24,969.33	32,611.50
C6	24,973.02	32,835.36
C7	24,976.90	33,378.87
C8	24,976.17	33,276.04
C9	24,973.85	33,481.66
C10	24,967.23	33,704.40
C11	24,970.28	33,601.61
C12	24,967.96	33,807.24
C13	25,000.44	38,350.27
C14	24,999.53	38,222.85
C15	24,949.49	38,467.07
C16	24,896.24	38,589.11

**CURVE C13**

C13	PI STA. = 497+43.15
	$\Delta = 23^\circ 58' 50''$ (RT)
	D = $9^\circ 32' 57''$
	R = 600.00'
	T = 127.43'
	L = 251.12'
	E = 13.38'
	e = 2.00%
	S.E. ATTN: 495+32.72 (-2.00%) TO 496+57.72 (2.00%)
	498+24.85 (2.00%) TO 499+49.85 (-2.00%)
C14	P.C. STA = 496+15.72
C15	P.T. STA = 498+66.85



LAYOUT	MNM/DJP	10/10/07
DRAWN	DJP	10/10/07
REVIEWED	MNM	10/04/08

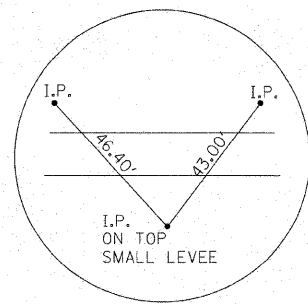
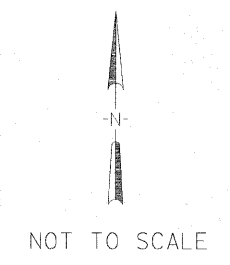
FILE NAME =	USER NAME = Pop08836	DESIGNED - MNM/DJP	REVISED -
I:\21\jobs\212218\CADD\Road\Sheet\VC-183	team.dgn	DRAWN - DJP	REVISED -
PLOT SCALE = 100.0000' / 1"	CHECKED - MNM	REVIEWED -	REVISED -
PLOT DATE = 12/23/2009	DATE - 10/10/07	REVISED -	REVISED -

**STATE OF ILLINOIS  
DEPARTMENT OF TRANSPORTATION**

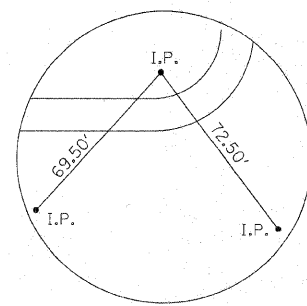
**GEOMETRIC CONTROL SHEET**

SCALE:	SHEET NO. 1 OF 1 SHEETS	STA. 436+50.00 TO STA. 500+00.00
--------	-------------------------	----------------------------------

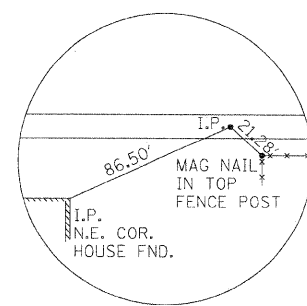
F.A.S. RTE.	SECTION	COUNTY	TOTAL SHEETS	SHEET NO.
662	09-00061-01-R5	CUMBERLAND	14	5
CONTRACT NO. 95614				
FED. ROAD DIST. NO. ILLINOIS FED. AID PROJECT				



CP #1  
N - 24,946.24  
E - 34,633.58



CP #2  
N - 24,987.32  
E - 35,155.85

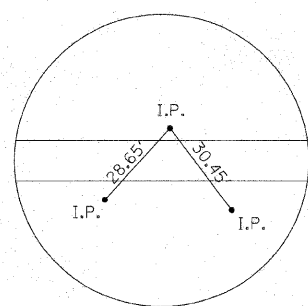


CP #3  
N - 24,961.03  
E - 32,834.71

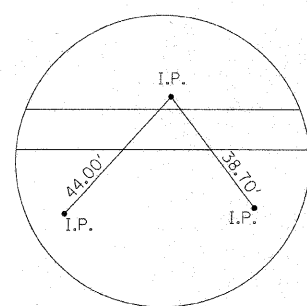
**BENCHMARKS**

0.1 MILES SOUTH OF THE CENTER OF THE S.E. 1/4 SECTION 26,  
110.00' SOUTH OF JUNCTION OF T-ROAD EAST, ON TOP OF  
NORTH END HEADWALL OF CONCRETE CULVERT UNDER ROAD  
SOUTH. CHISEL SQUARE ELEVATION = 618.00

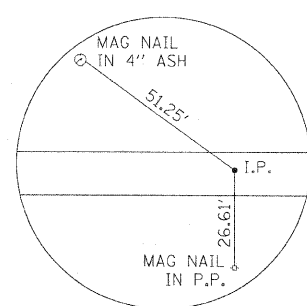
CP #6 N - 24,957.90 E - 31,297.53 ELEVATION = 571.96



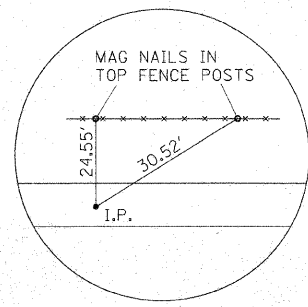
CP #4  
N - 24,955.12  
E - 36,100.77



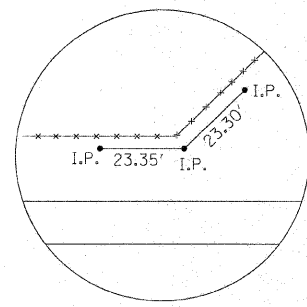
CP #5  
N - 24,990.00  
E - 36,699.24



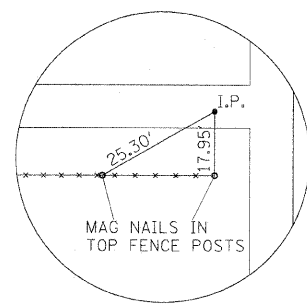
CP #6  
N - 24,957.90  
E - 31,297.53  
BENCHMARK



CP #7  
N - 24,971.14  
E - 37,158.54



CP #8  
N - 25,010.75  
E - 37,586.31



CP #9  
N - 24,996.45  
E - 37,705.30

© Copyright Hanson Professional Services Inc. 2009  
**HANSON**  
 Hanson Professional Services Inc.

LAYOUT	MNM/DJP	10/10/07
DRAWN	DJP	10/20/07
REVIEWED	MNM	02/07/08

FILE NAME =	USER NAME = Pop00036	DESIGNED - MNM/DJP	REVISED -
I:\01\jobs\01s20218\CADD\Road\Sheet\C-103 geom.dgn		DRAWN - DJP	REVISED -
PLOT SCALE = 100.0000' / in.		CHECKED - MNM	REVISED -
PLOT DATE = 12\23\2009		DATE - 10/10/07	REVISED -

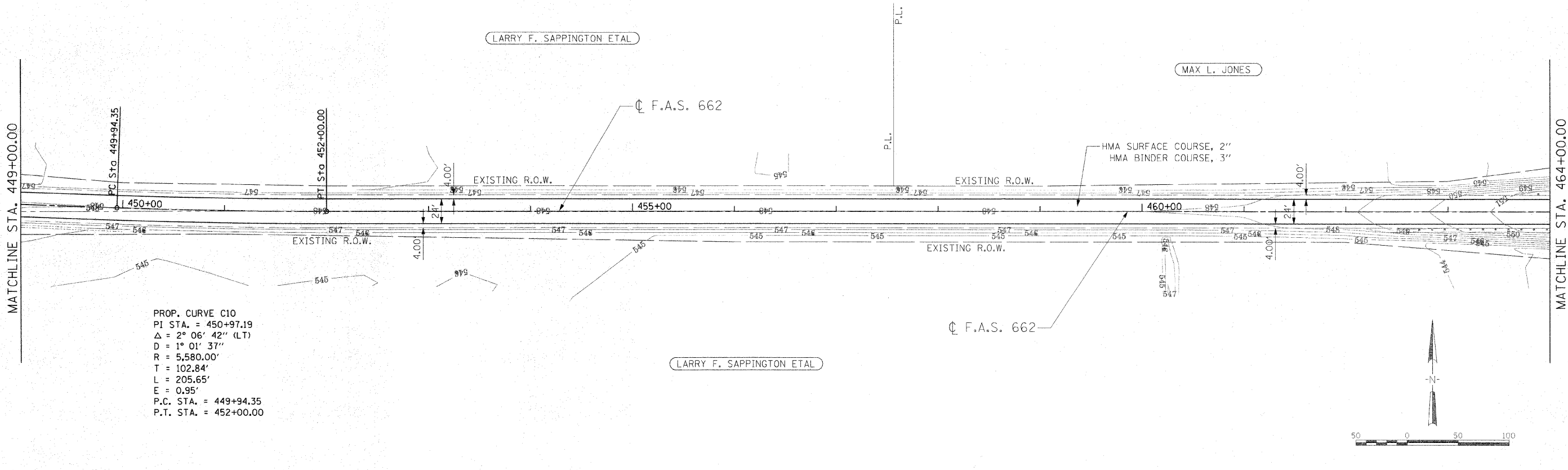
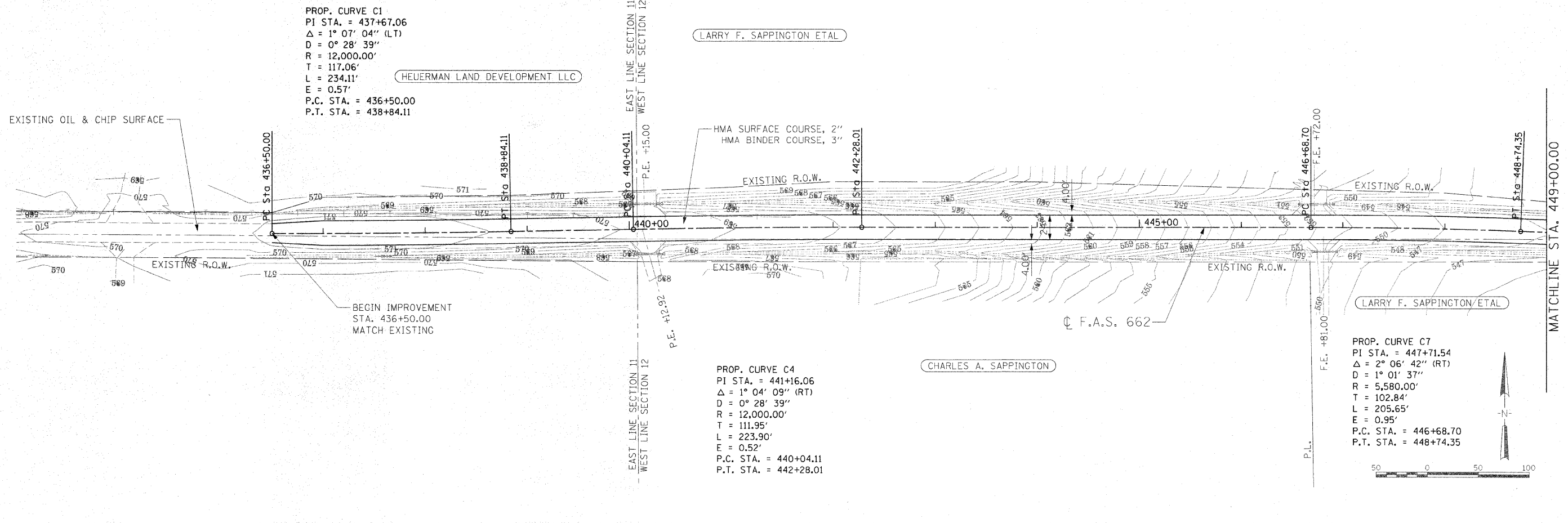
**STATE OF ILLINOIS  
DEPARTMENT OF TRANSPORTATION**

**SURVEY TIES / BENCHMARKS**

SCALE: SHEET NO. 1 OF 1 SHEETS

F.A.S. RTE.	SECTION	COUNTY	TOTAL SHEETS	SHEET NO.
662	09-00061-01-RS	CUMBERLAND	14	6
CONTRACT NO. 95614				
FED. ROAD DIST. NO. [ILLINOIS] FED. AID PROJECT				

© Copyright Hanson Professional Services Inc. 2009  
**HANSON**  
 Hanson Professional Services Inc.



LAYOUT	MNM/DJP	10/15/07
DRAWN	DJP	10/10/07
REVIEWED	MNM	10/22/08

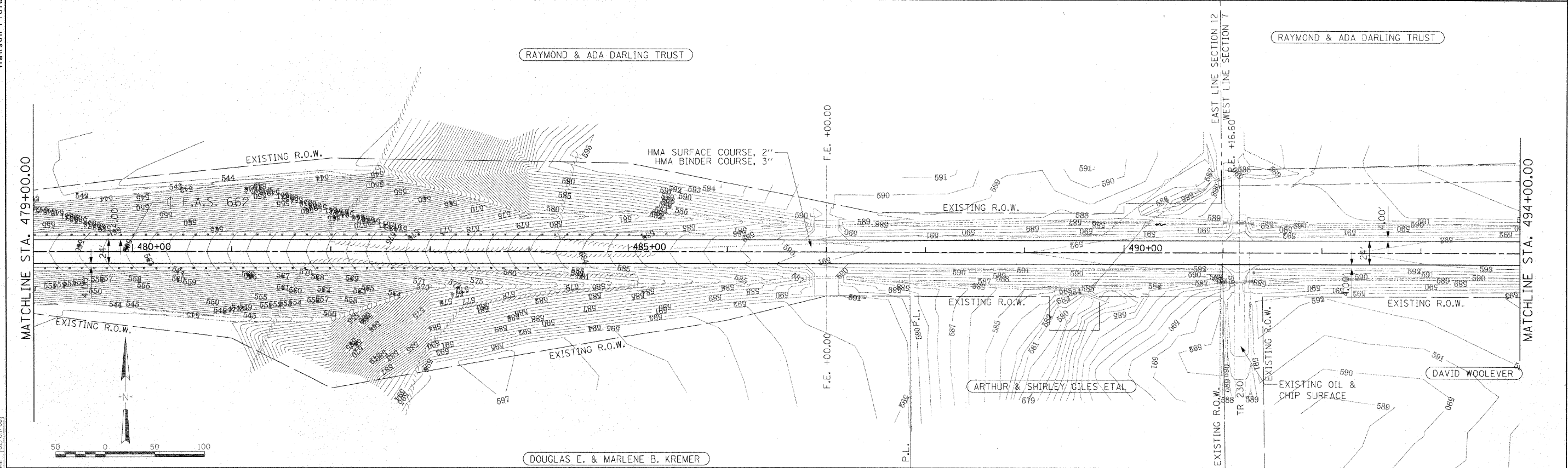
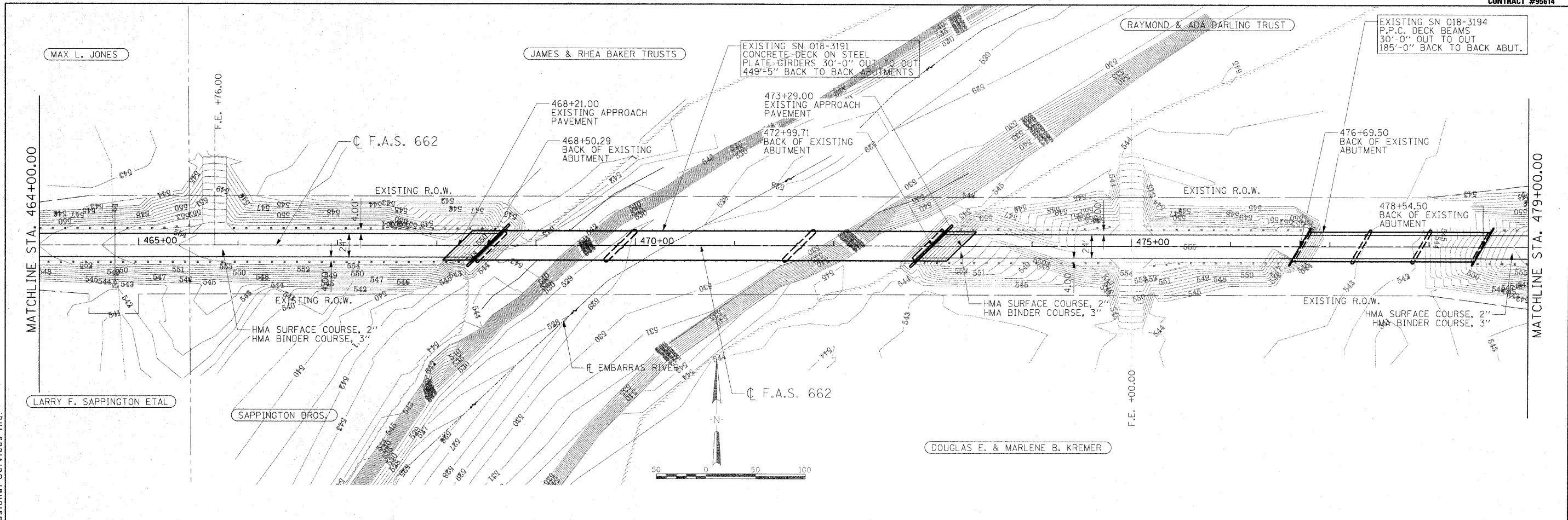
FILE NAME =	USER NAME = Pop00936	DESIGNED -	MNM/DJP	REVISED -	
In:\01\jobs\01\2021B\CADD\Road\Sheet\C-701.dgn		DRAWN -	DJP	REVISED -	
PLOT SCALE = 58.0000 / in.		CHECKED -	MNM	REVISED -	
PLOT DATE = 12/23/2009		DATE -	10/22/09	REVISED -	

**STATE OF ILLINOIS  
 DEPARTMENT OF TRANSPORTATION**

**PLAN SHEET**

SCALE: SHEET NO. 1 OF 3 SHEETS STA. 436+50.00 TO STA. 464+00.00

F.A.S. RTE.	SECTION	COUNTY	TOTAL SHEETS	SHEET NO.
662	09-00061-01-R5	CUMBERLAND	14	7
CONTRACT NO. 95614				
FED. ROAD DIST. NO. ILLINOIS FED. AID PROJECT				



© Copyright Hanson Professional Services Inc. 2009

LAYOUT	MNM/DJP	10/20/07
DRAWN	DJP	10/20/07
REVIEWED	JMM	02/07/08

FILE NAME =	USER NAME = Pop02036
1:\01\jobs\01s2021\CAED\Road\Sheet\VC-783.dgn	
PLOT SCALE = 50.0000' / in.	
PLOT DATE = 12/23/2009	

DESIGNED - MNM/DJP	REVISED -
DRAWN - DJP	REVISED -
CHECKED - MNM	REVISED -
DATE - 10/22/09	REVISED -

**STATE OF ILLINOIS  
DEPARTMENT OF TRANSPORTATION**

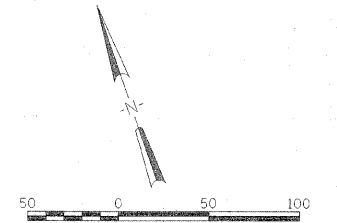
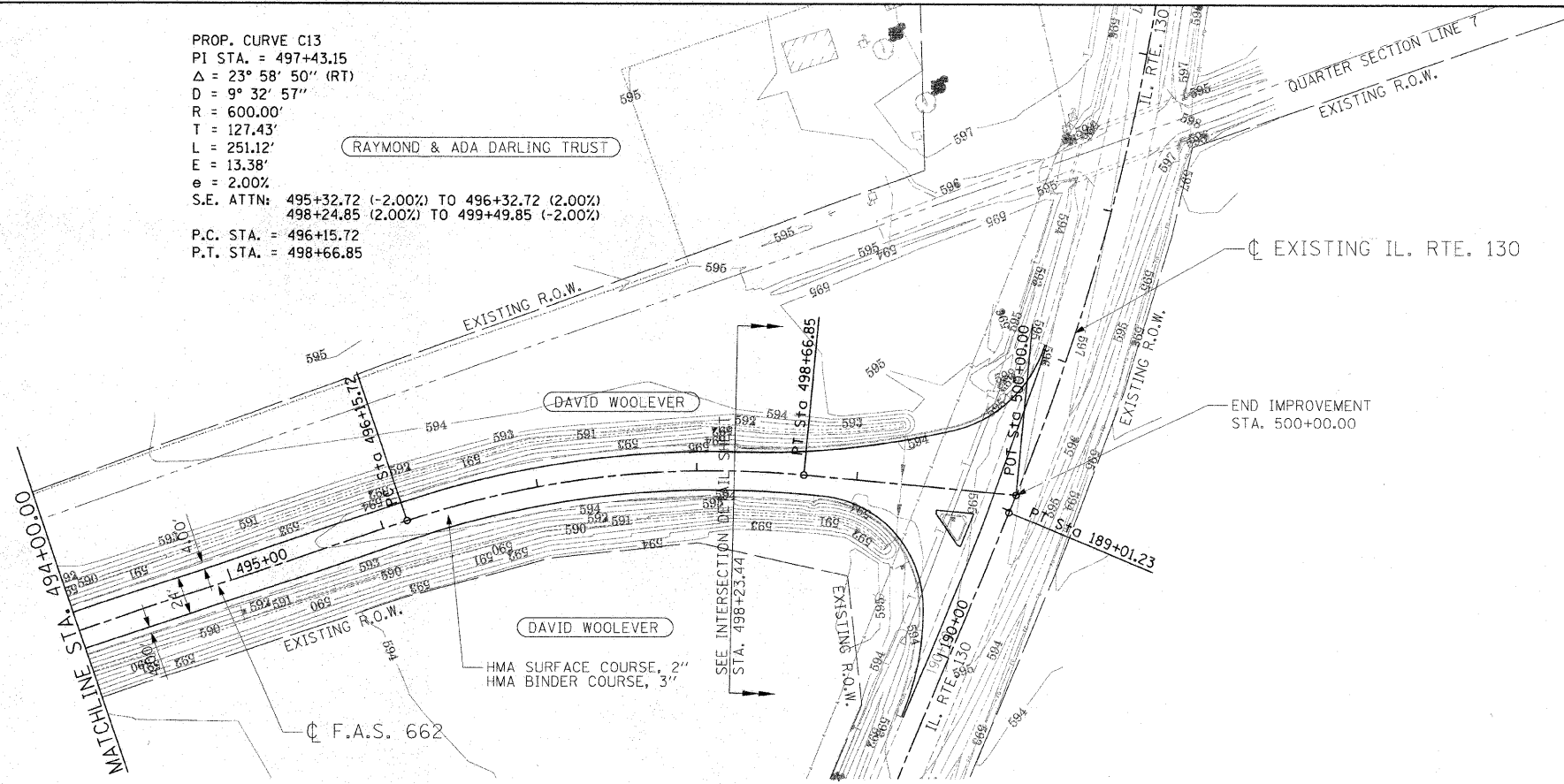
**PLAN SHEET**

SCALE: SHEET NO. 2 OF 3 SHEETS STA. 464+00.00 TO STA. 494+00.00

F.A.S. RTE.	SECTION	COUNTY	TOTAL SHEETS	SHEET NO.
662	09-00061-01-RS	CUMBERLAND	14	8
CONTRACT NO. 95614				
FED. ROAD DIST. NO. ILLINOIS FED. AID PROJECT				



PROP. CURVE C13  
 PI STA. = 497+43.15  
 $\Delta = 23^\circ 58' 50''$  (RT)  
 $D = 9^\circ 32' 57''$   
 $R = 600.00'$   
 $T = 127.43'$   
 $L = 251.12'$   
 $E = 13.38'$   
 $e = 2.00\%$   
 S.E. ATTN: 495+32.72 (-2.00%) TO 496+32.72 (2.00%)  
 498+24.85 (2.00%) TO 499+49.85 (-2.00%)  
 P.C. STA. = 496+15.72  
 P.T. STA. = 498+66.85



© Copyright Hanson Professional Services Inc. 2009  
**HANSON**  
 Hanson Professional Services Inc.

LAYOUT	MNM/DJP	10/30/07
DRAWN	DJP	10/20/07
REVIEWED	MNM	10/24/08

FILE NAME =	I:\21jobs\01\2021B\CADD\Road\Sheet\C-708.dgn
USER NAME =	Pop00936
DESIGNED -	MNM/DJP
REVISIONS	
DRAWN -	DJP
CHECKED -	MNM
DATE -	10/22/09
PLT SCALE =	50.0000' / in.
PLT DATE =	12/23/2009

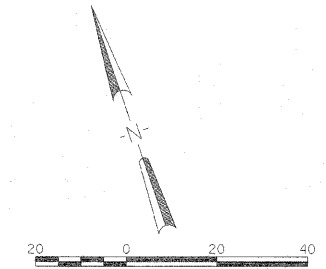
**STATE OF ILLINOIS  
 DEPARTMENT OF TRANSPORTATION**

**PLAN SHEET**

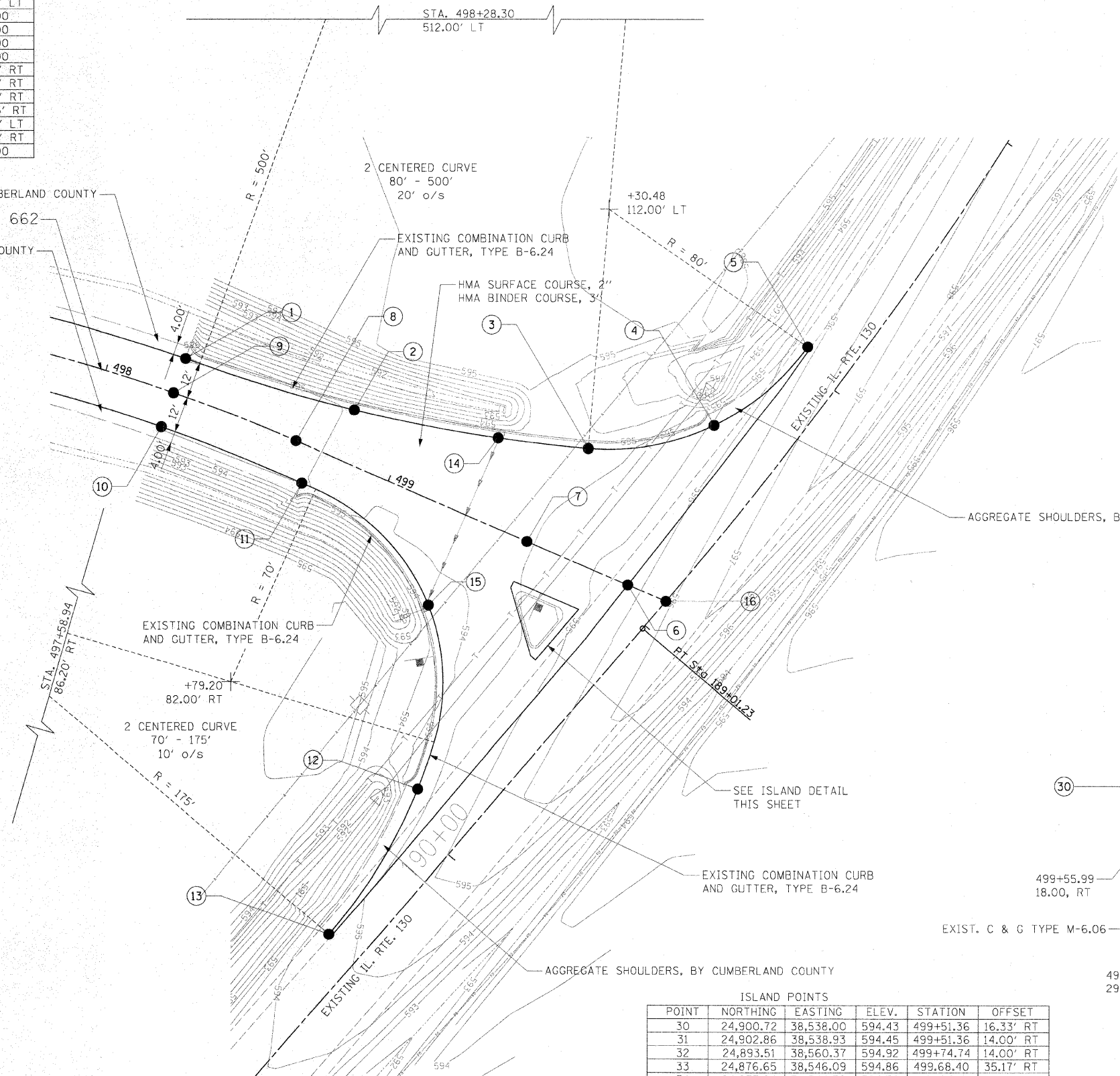
SCALE: SHEET NO. 3 OF 3 SHEETS STA. 494+00.00 TO STA. END

F.A.S. RTE.	SECTION	COUNTY	TOTAL SHEETS	SHEET NO.
662	09-00061-01-R5	CUMBERLAND	14	9
CONTRACT NO. 95614				
FED. ROAD DIST. NO. [ILLINOIS] FED. AID PROJECT				

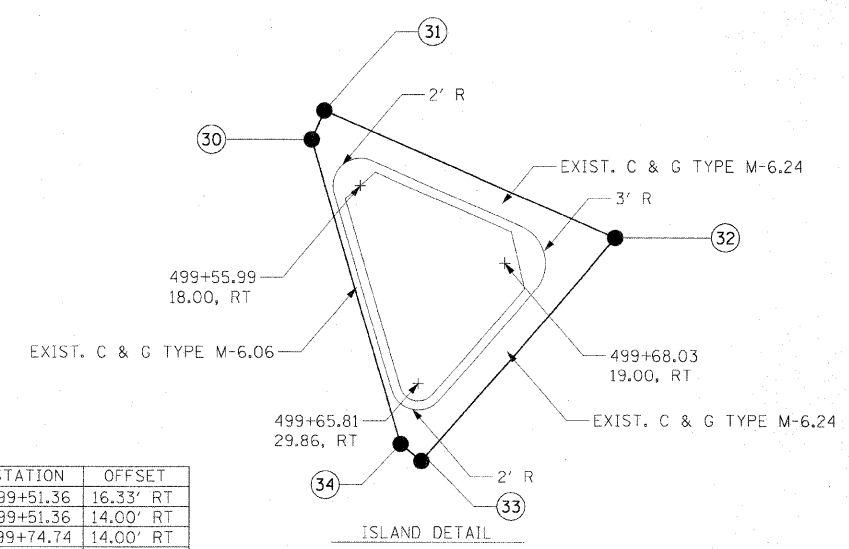
PAVEMENT POINTS					
POINT	NORTHING	EASTING	ELEV.	STATION	OFFSET
1	24,976.71	38,430.68	595.02	498+23.44	12.00' LT
2	24,959.62	38,486.29	594.47	498+80.41	16.98' LT
3	24,946.98	38,563.46	594.45	499+56.19	36.25' LT
4	24,954.63	38,604.90	595.05	499+91.13	59.83' LT
5	24,980.82	38,635.71	595.85	500+08.89	96.15' LT
6	24,901.73	38,576.53	595.30	499+86.27	0.00
7	24,916.24	38,543.28	594.68	499+50.00	0.00
8	24,949.49	38,467.07	594.76	498+66.85	0.00
9	24,965.39	38,426.69	594.78	498+23.44	0.00
10	24,954.08	38,422.70	594.54	498+23.44	12.00' RT
11	24,935.55	38,469.01	594.51	498+74.20	12.00' RT
12	24,833.81	38,507.20	594.39	499+49.88	89.98' RT
13	24,785.50	38,477.71	594.29	499+42.17	146.05' RT
14	24,950.26	38,534.63	594.24	499+28.46	27.72' LT
15	24,894.25	38,511.04	593.64	499+29.24	33.05' RT
16	24,896.24	38,589.11	595.90	500+00.00	0.00



AGGREGATE SHOULDERS, BY CUMBERLAND COUNTY  
 C F.A.S. 662  
 AGGREGATE SHOULDERS, BY CUMBERLAND COUNTY



PI STA. = 497+43.15  
 Δ = 23° 58' 50" (RT)  
 D = 9° 32' 57"  
 R = 600.00'  
 T = 127.43'  
 L = 251.12'  
 E = 13.38'  
 P.C. STA = 496+15.72  
 P.T. STA = 498+66.85



ISLAND POINTS					
POINT	NORTHING	EASTING	ELEV.	STATION	OFFSET
30	24,900.72	38,538.00	594.43	499+51.36	16.33' RT
31	24,902.86	38,538.93	594.45	499+51.36	14.00' RT
32	24,893.51	38,560.37	594.92	499+74.74	14.00' RT
33	24,876.65	38,546.09	594.86	499+68.40	35.17' RT
34	24,877.94	38,544.56	594.76	499+66.48	34.59' RT

© Copyright Hanson Professional Services Inc. 2009  
**HANSON**  
 Hanson Professional Services Inc.

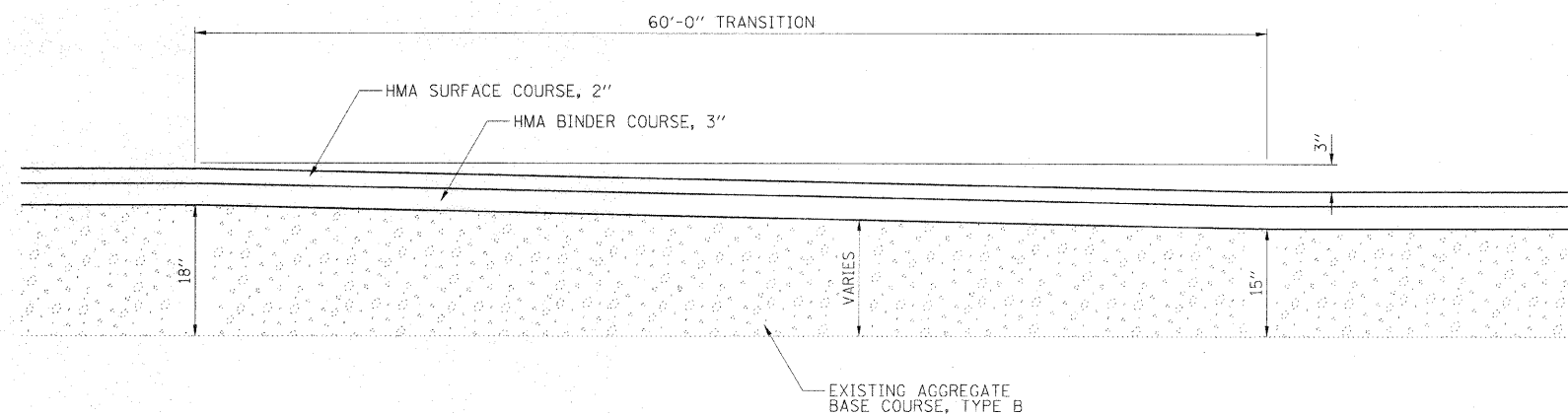
LAYOUT	MNM/DJP	10/10/07
DRAWN	DJP	10/10/07
REVIEWED	MNM	02/04/08

FILE NAME =	USER NAME = Pop00836	DESIGNED - MNM/DJP	REVISED -
I:\01jobs\01s20218\CADD\Road\Sheet\VC-502.dwg		DRAWN - DJP	REVISED -
PLOT SCALE = 28.0000' / in.		CHECKED - MNM	REVISED -
PLOT DATE = 12/23/2009		DATE - 10/22/09	REVISED -

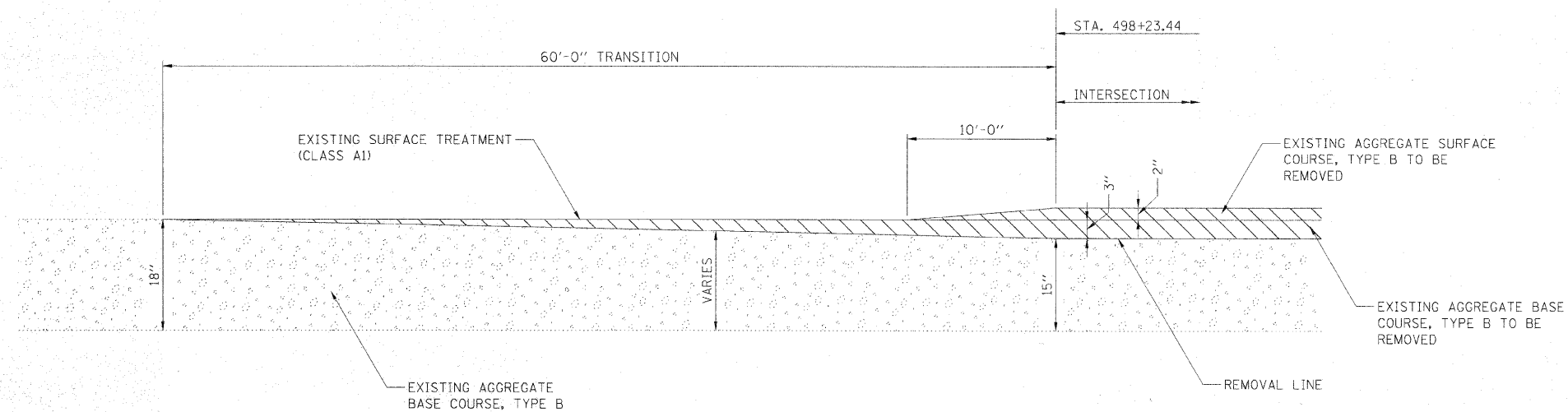
**STATE OF ILLINOIS  
 DEPARTMENT OF TRANSPORTATION**

<b>INTERSECTION DETAIL</b>	
SCALE:	SHEET NO. 1 OF 1 SHEETS STA. TO STA.

F.A.S. RTE.	SECTION	COUNTY	TOTAL SHEETS	SHEET NO.
662	09-00061-01-RS	CUMBERLAND	14	10
CONTRACT NO. 95614				
FED. ROAD DIST. NO. ILLINOIS FED. AID PROJECT				



PAVEMENT TRANSITION DETAIL AT IL 130 INTERSECTION



REMOVAL TRANSITION DETAIL AT IL 130 INTERSECTION

© Copyright Hanson Professional Services Inc. 2009  
**HANSON**  
 Hanson Professional Services Inc.

LAYOUT: MNM/DJP 10/10/09  
 DRAWN: DJP 10/10/09  
 REVISION: JMM 10/20/09

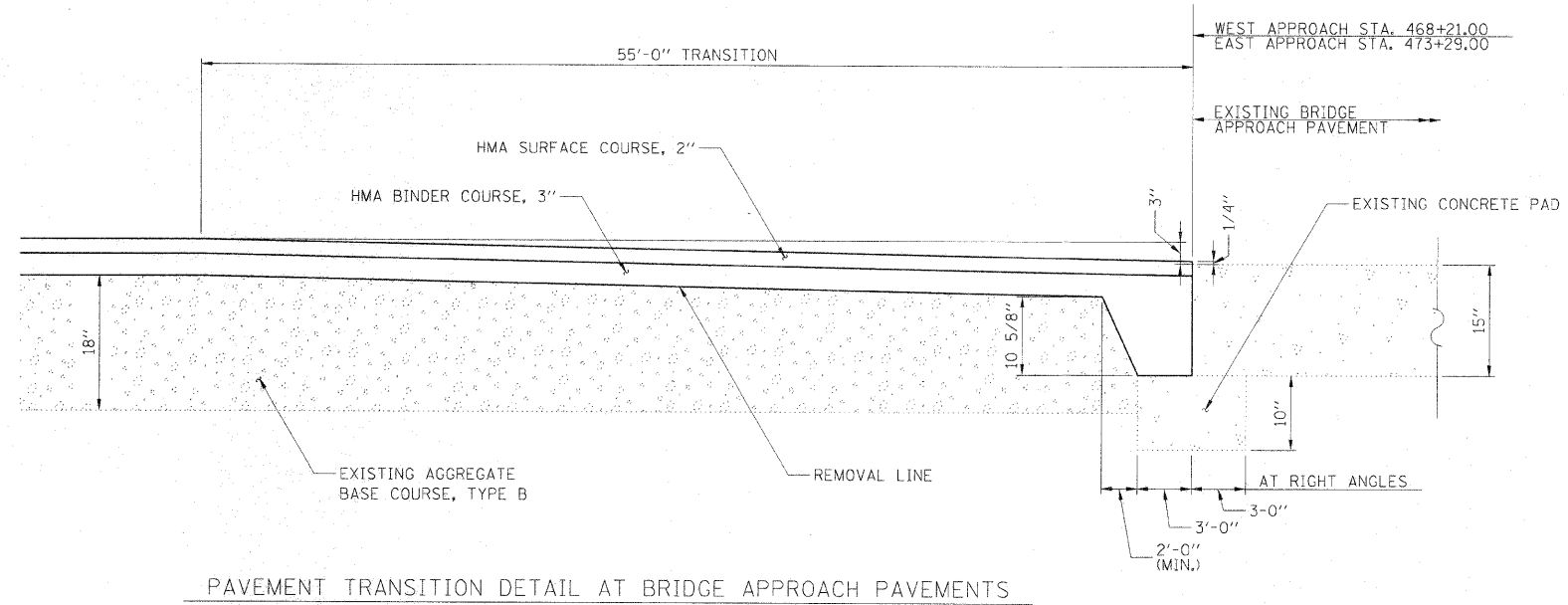
FILE NAME =	USER NAME = Pop00936	DESIGNED = MNM/DJP	REVISED =
is:\01\jobs\01s2021B\CADD\Road\Sheet\C-50	mis.dgn	DRAWN = DJP	REVISED =
	PLOT SCALE = 10.0000 / 1 in.	CHECKED = MNM	REVISED =
	PLOT DATE = 12\23\2009	DATE = 10/22/09	REVISED =

**STATE OF ILLINOIS**  
**DEPARTMENT OF TRANSPORTATION**

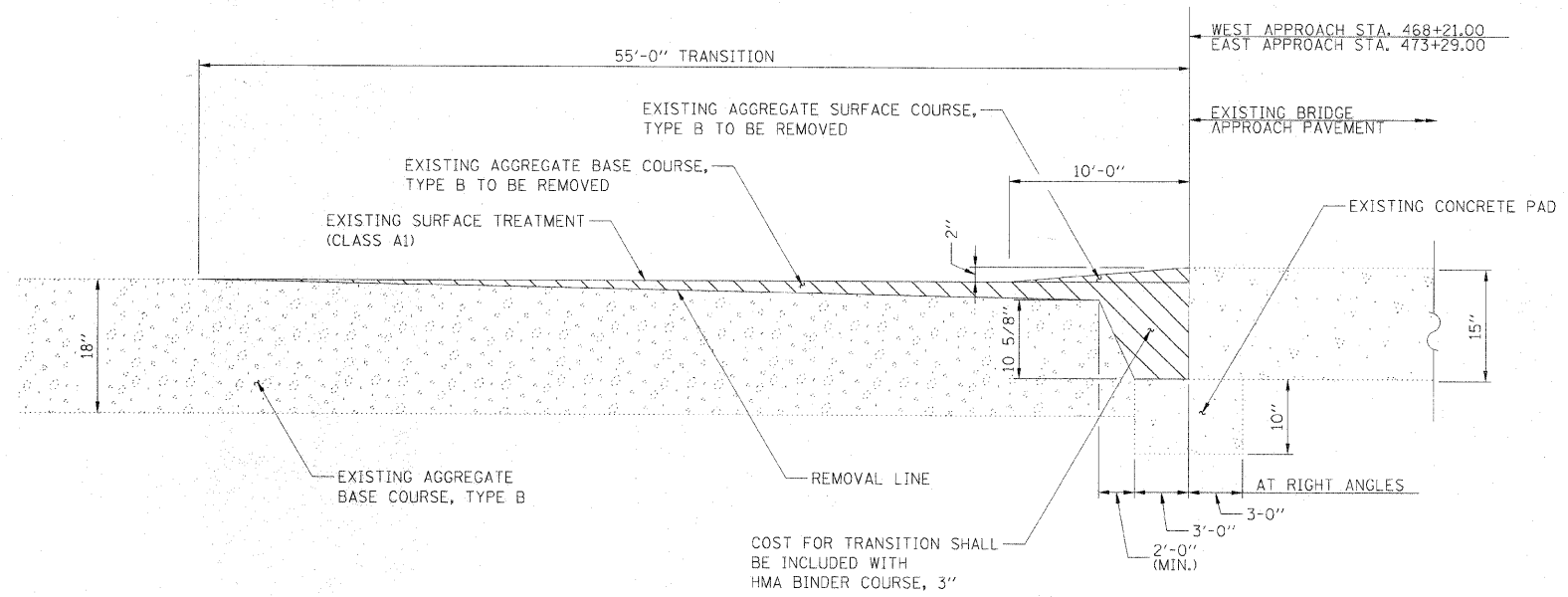
**MISCELLANEOUS DETAILS**  
**IL RTE. 130 INTERSECTION**

SCALE: SHEET NO. 1 OF 1 SHEETS

F.A.S. RTE.	SECTION	COUNTY	TOTAL SHEETS	SHEET NO.
662	09-00061-01-RS	CUMBERLAND	14	11
CONTRACT NO. 95614				
FED. ROAD DIST. NO. [ILLINOIS] FED. AID PROJECT				



PAVEMENT TRANSITION DETAIL AT BRIDGE APPROACH PAVEMENTS



REMOVAL TRANSITION DETAIL AT BRIDGE APPROACH PAVEMENTS

COST FOR TRANSITION SHALL BE INCLUDED WITH HMA BINDER COURSE, 3"

LAYOUT	MNM/DJP	10/10/07
DRAWN	DJP	10/10/07
REVIEWED	JMM	02/04/08

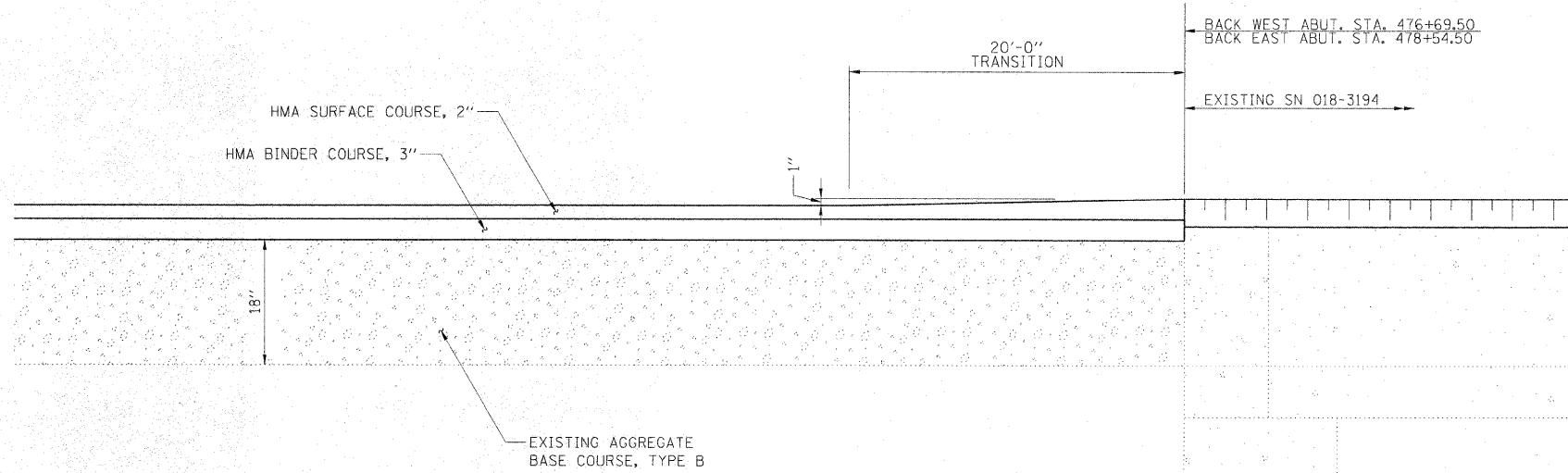
FILE NAME =	USER NAME = Pop00836	DESIGNED - MNM/DJP	REVISED -
It:\01\jobs\01e20218\CADD\Road\Sheet\C-507.mis-bridge.dgn		DRAWN - DJP	REVISED -
PLOT SCALE = 18,0000 / / 1/16		CHECKED - MNM	REVISED -
PLOT DATE = 12\23\2009		DATE - 10/22/09	REVISED -

**STATE OF ILLINOIS**  
**DEPARTMENT OF TRANSPORTATION**

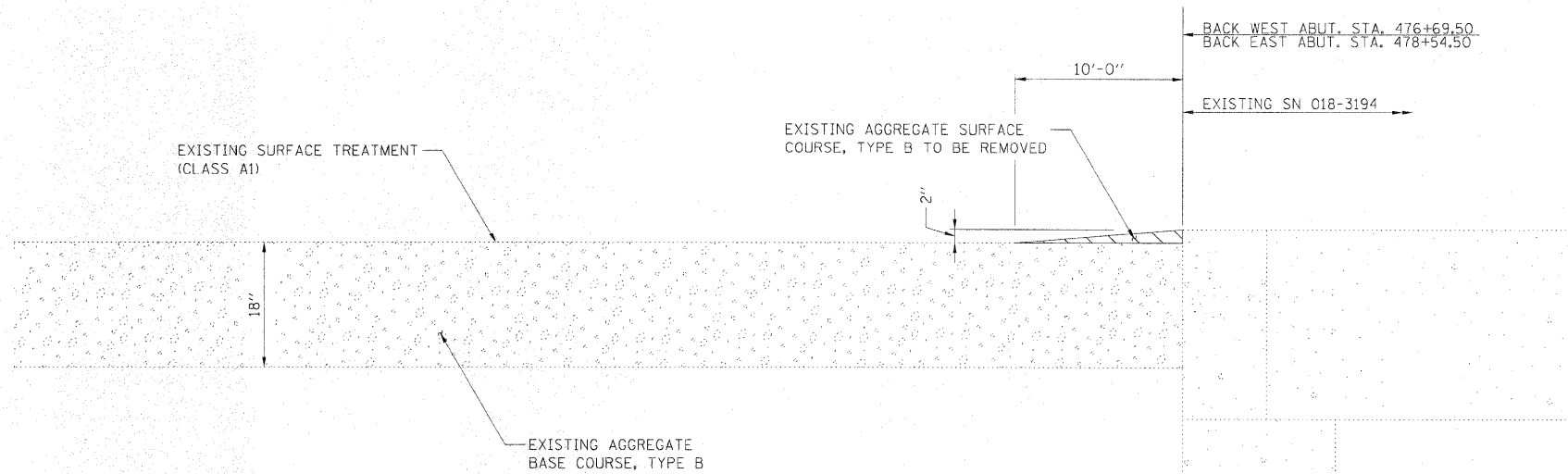
**MISCELLANEOUS DETAILS**  
**STRUCTURE OVER EMBARRAS RIVER**

SCALE: SHEET NO. 1 OF 1 SHEETS

F.A.S. RTE.	SECTION	COUNTY	TOTAL SHEETS	SHEET NO.
662	09-00061-01-RS	CUMBERLAND	14	12
CONTRACT NO. 95614				
FED. ROAD DIST. NO. ILLINOIS FED. AID PROJECT				



PAVEMENT TRANSITION DETAIL AT BACK OF ABUTMENTS



REMOVAL TRANSITION DETAIL AT BACK OF ABUTMENTS

© Copyright Hanson Professional Services Inc. 2009  
**HANSON**  
 Hanson Professional Services Inc.

LAYOUT	MNM/DJP	10/10/09
DRAWN	DJP	10/10/09
REVIEWED	MNM	10/20/09

FILE NAME =	USER NAME = Pop00936	DESIGNED - MNM/DJP	REVISED -
I:\01jobs\01s2021B\CADD\Road\Sheet\C-50	ms-over flow.dgn	DRAWN - DJP	REVISED -
	PLOT SCALE = 10.0000' / 1"	CHECKED - MNM	REVISED -
	PLOT DATE = 12\23\2009	DATE - 10/22/09	REVISED -

**STATE OF ILLINOIS**  
**DEPARTMENT OF TRANSPORTATION**

**MISCELLANEOUS DETAILS**  
**EMBARRAS RIVER OVERFLOW STRUCTURE**

SCALE: SHEET NO. 1 OF 1 SHEETS

F.A.S. RTE.	SECTION	COUNTY	TOTAL SHEETS	SHEET NO.
662	09-00061-01-RS	CUMBERLAND	14	13
CONTRACT NO. 95614				
FED. ROAD DIST. NO. ILLINOIS FED. AID PROJECT				

B.M. : Iron Pin, Station 474+93.38, Rt. 29.24', Elev. 544.23  
 Iron Pin, Station 480+92.08, Lt. 1.36', Elev. 545.90

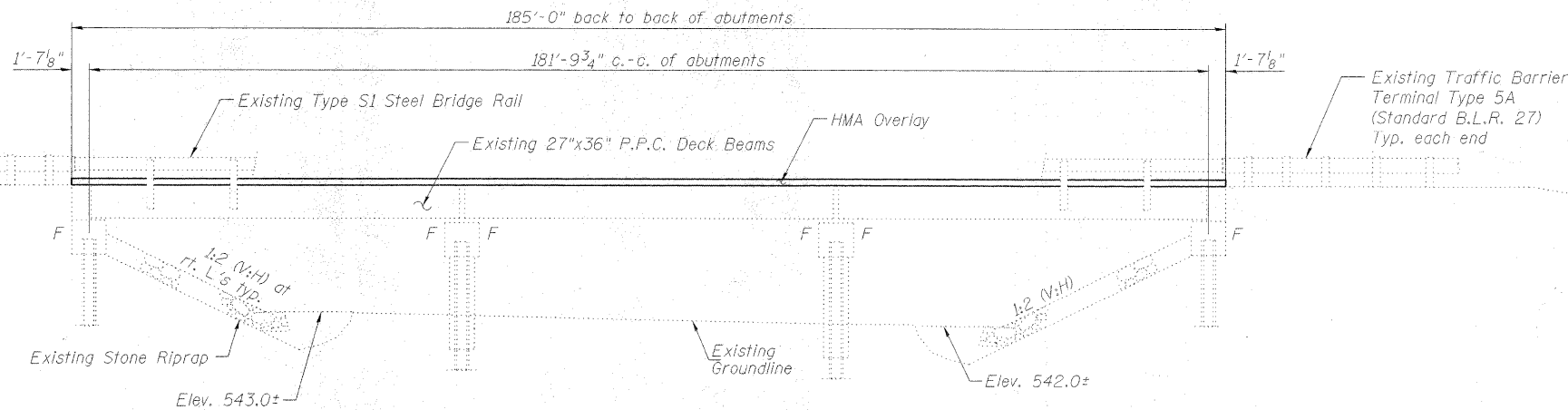
Existing Structure (No. 018-3194);  
 Originally Constructed in 2009 Under Section 01-00061-00-BR

ROUTE NO.	SECTION	COUNTY	TOTAL SHEETS	SHEET NO.	SHEET NO.
FAS 662 (TR 6D)	*	CUMBERLAND	14	14	1 SHEETS
FED. ROAD DIST. NO. 7	ILLINOIS	FED. AID PROJECT			

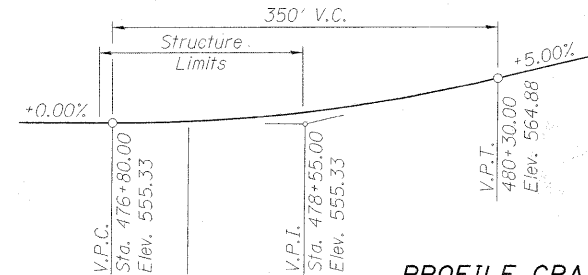
\* Section 09-00061-01-RS Contract #95614

**GENERAL NOTES**

- Plan Dimensions and Details Relative to Existing Plans are Subject to Nominal Construction Variations. The Contractor Shall Field verify Existing Dimensions and Details Affecting New Construction and Make Necessary Approved Adjustments Prior to Construction or Ordering of Materials. Such Variations Shall Not be Cause for Additional Compensation for a Change Scope of Work, However, the Contractor Will be Paid for the Quantity Actually Furnished at the Unit Price Bid for the Work.
- The structure was recently constructed and construction records indicate that there is no asbestos in the structure. This structure has been cleared for asbestos with the Illinois Department of Transportation.

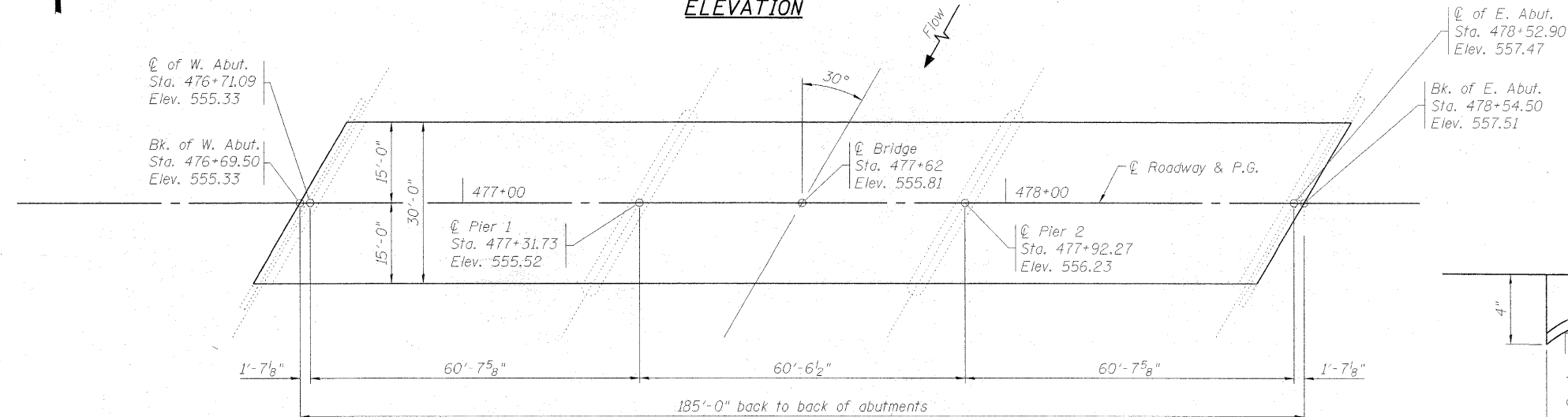


**ELEVATION**

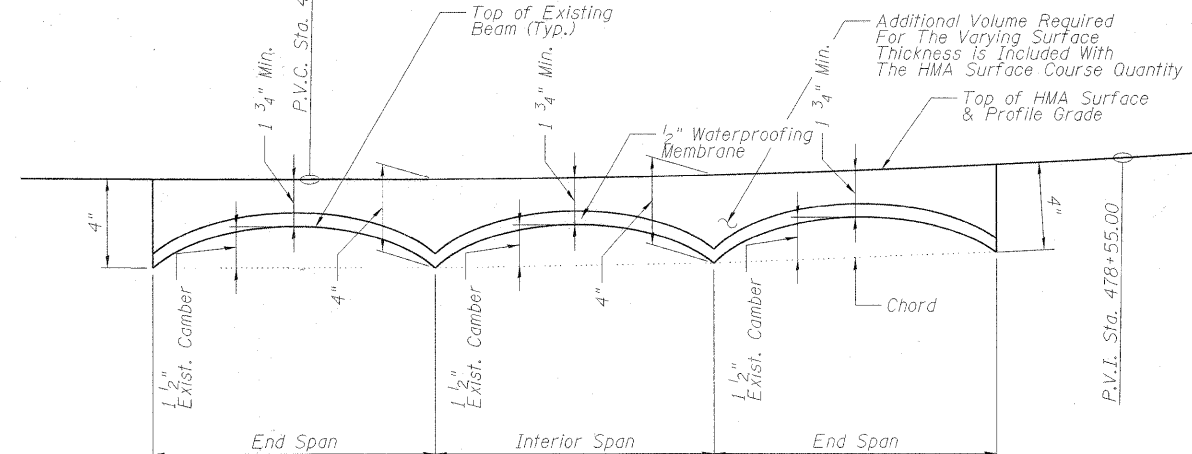


**PROFILE GRADE**

(Along  $\varnothing$  Roadway, use only across bridge)



**PLAN**

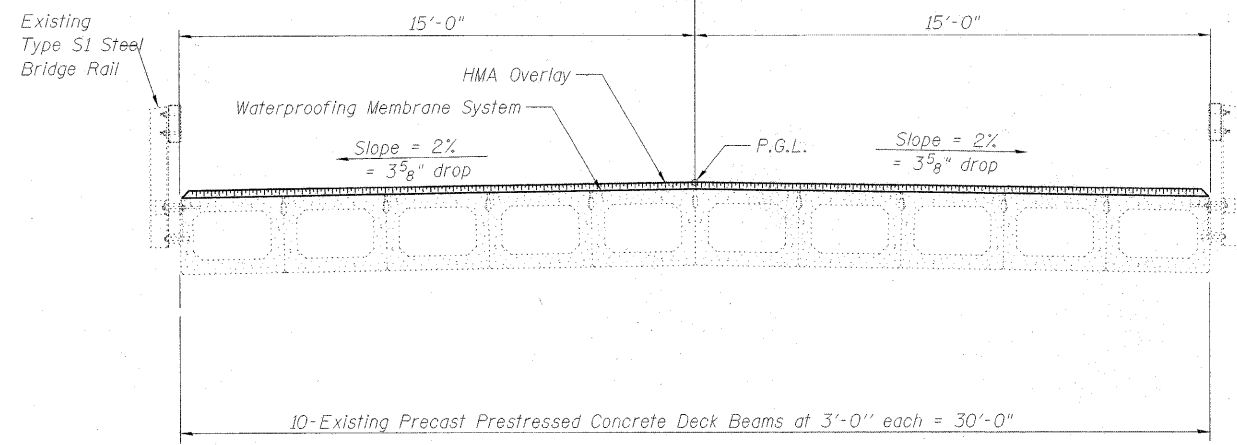


**ANTICIPATED CAMBER DIAGRAM**

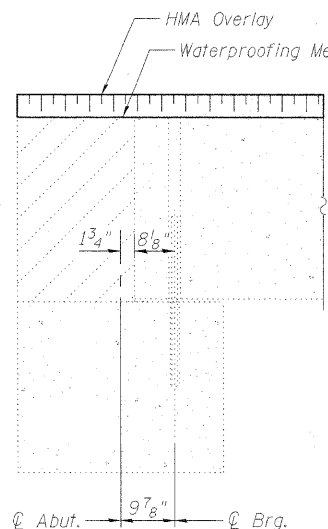
Note: The Thickness of The Concrete Overlay Varies as Required to Adjust For The Profile Grade and Existing Beam Camber

**TOTAL BILL OF MATERIAL**

Item	Unit	Super	Sub.	Total
Waterproofing Membrane System	Sq. Yd.	617	-	617
Hot-Mix Asphalt Surface Course, Mix "C", N70	Ton	79	-	79

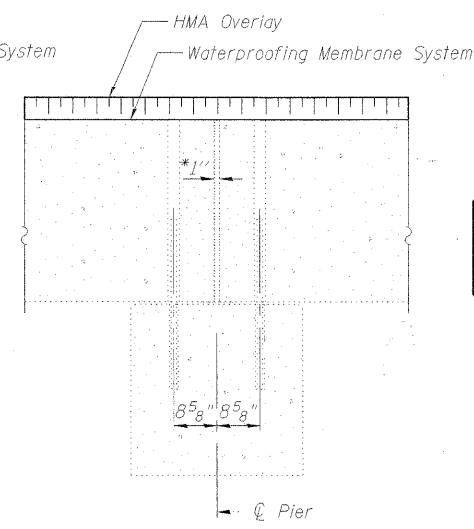


**CROSS SECTION**



**SECTION THRU ABUTMENT**

All dimensions along  $\varnothing$  roadway



**SECTION THRU FIXED PIER**

All dimensions along  $\varnothing$  roadway

01/21/2010  
 I:\01\Jobs\01520218\CAD\Drawn\Sheet\01-CP-R&E.dgn  
 LAYOUT  
 DRAWN  
 REVIEWED  
 DAP  
 JUT

H.M.A. OVERLAY ON BRIDGE  
 F.A.S. 662 (TR 6D) EMBARRAS RIVER OVERFLOW STRUCTURE  
 CUMBERLAND COUNTY  
 SECTION 09-00061-01-RS  
 STA. 477+62.00  
 STRUCTURE NUMBER 018-3191  
 PROFESSIONAL DESIGN FIRM LICENSE #184-001084  
 © Copyright Hanson Professional Services Inc. 2010  
**HANSON**  
 Hanson Professional Services Inc.  
 JOB NO. 01520218  
 DATE 01/21/10