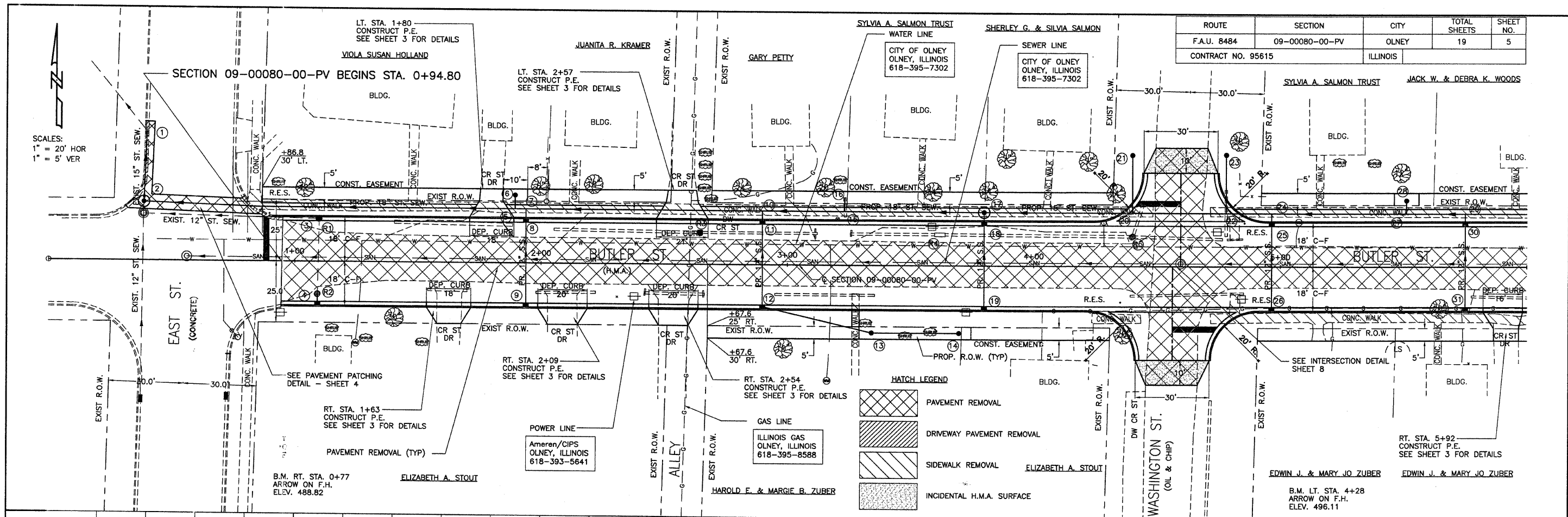


ROUTE	SECTION	CITY	TOTAL SHEETS	SHEET NO.
F.A.U. 8484	09-00080-00-PV	OLNEY	19	5
CONTRACT NO. 95615		ILLINOIS		



STATION	PIPE CULVERT REMOVAL	TR. B'FILL CU.YD.	TREE REMOVAL (OVER 15 UNITS DIA.) UNIT DIA.	P.C.C. PAVEMENT 7" (SPL.) W/I.C. SQ. YD.	INCID. H.M.A. SURFACING TON	AGG. SURF. CSE., TY.-B TON
510	RT. STA. 1+62 LT. STA. 1+64 RT. STA. 2+10 LT. STA. 2+34 RT. STA. 2+54 LT. STA. 2+89	18 25 25 47	0.6 3.6 1.9 4.4 1.9 3.5	STA. 0+95 TO 6+00 40	STA. 0+95 TO 6+00 LT. STA. 0+32 TO 0+80 2256 50 TOTAL 2306 SQ YD	LT. & RT. STA. 4+60 10 STA. 0+95 TO 6+00 DRIVES 20
505	RT. STA. 3+15 LT. STA. 3+23 LT. STA. 3+43 LT. STA. 4+02 LT. STA. 4+43 LT. STA. 4+55	41 8 35 75 14 38	3.0 0.6 2.6 5.6 1.0 2.8	STA. 0+80 TO 6+00 2793 AGG. BASE COURSE, TYPE A TON 495	STA. 0+95 TO 6+00 495	VPI STA = 4+50.00 VPI EL = 494.70 CURVE LEN = 100.00
500	RT. STA. 4+62 LT. STA. 4+78 LT. STA. 4+82	48 19 7	3.5 1.5 0.5	COMB. CONG. CURB & GUTTER, TYPE B-6.12 FOOT 17 P.C.C. SIDEWALK 4" SPECIAL SQ. FT. 525 55 TOTAL 580 SQ FT	LT. STA. 3+25 TO 4+20 LT. STA. 5+90 TO 6+00 25 PROP. 15" ST. SEWER	VPT STA = 5+25.00 VPT EL = 496.56 2.48%
495	TOTAL 505 FT	TOTAL 37 C.Y.	P.C.C. SIDEWALK 4 INCH SQ. FT. 1131 585 TOTAL 1716 SQ FT	STORM SEWER REMOVAL 15" FOOT 25	LT. STA. 0+32	
490			EXIST. 8" SAN. SEWER 2.14% PROP. 18" ST. SEWER	PROP. 15" ST. SEWER 4.20%		
485			PROP. 18" ST. SEWER	EXIST. 8" SAN. SEWER		COMB. CURB & GUTTER REMOVAL FOOT 17 38 TOTAL 55 FT
480	PAINT PAV'T. MARKING LINE 4" FOOT 130 STA. 0+95 TO 6+00		MANHOLES TO BE ADJUSTED EACH 1 STA. 4+00		VPI STA = 4+00.00 VPI EL = 492.80 CURVE LEN = 100.00	F.C.C. DRIVEWAY PAV'T. 6" SQ. YD. 10 16 12 12 20 15
475	PAINT PAV'T. MARKING LINE 24" FOOT 20 40 TOTAL 60 FOOT		CONCRETE HEADWALL REMOVAL EACH 2 1 1 TOTAL 4 EACH	AGG. BASE. CSE., TY.-B TON 20	REM. & RESET STREET SIGNS EACH 4	RT. STA. 1+63 LT. STA. 1+80 RT. STA. 2+09 RT. STA. 2+54 RT. STA. 2+57 RT. STA. 5+92
470			SEEDING CLASS 1 (SPL.) ACRE 0.10	PAVEMENT REMOVAL SQ. YD. 1271		TOTAL 85 SQ. YD.
465						DETECTABLE WARNINGS SQ. FT. 60