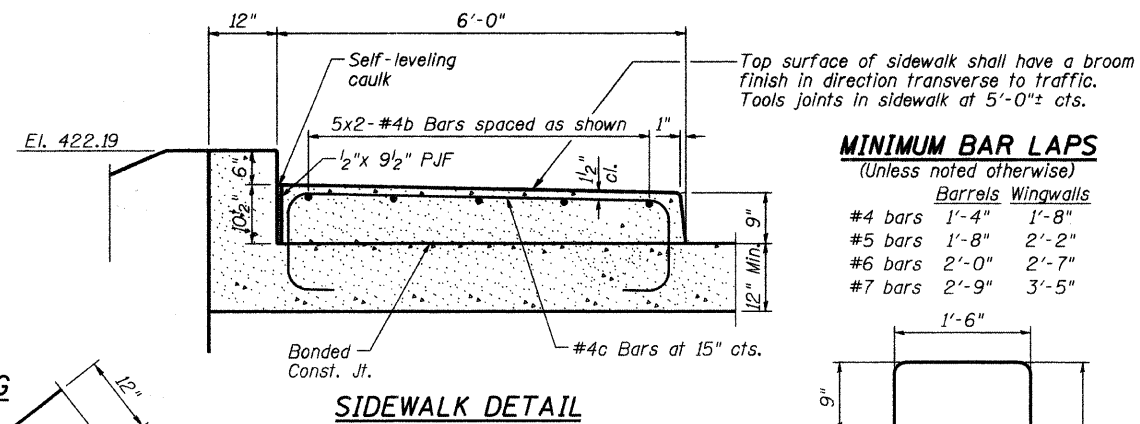
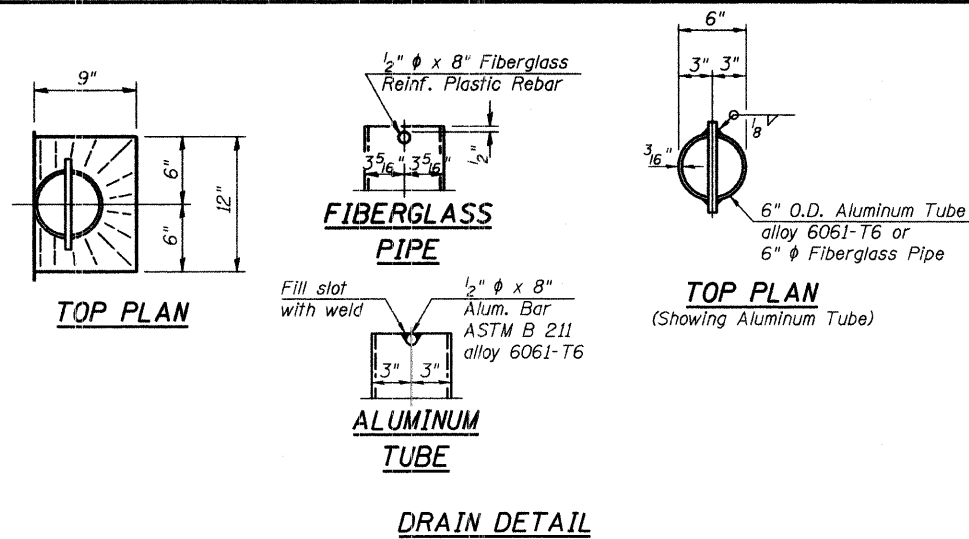
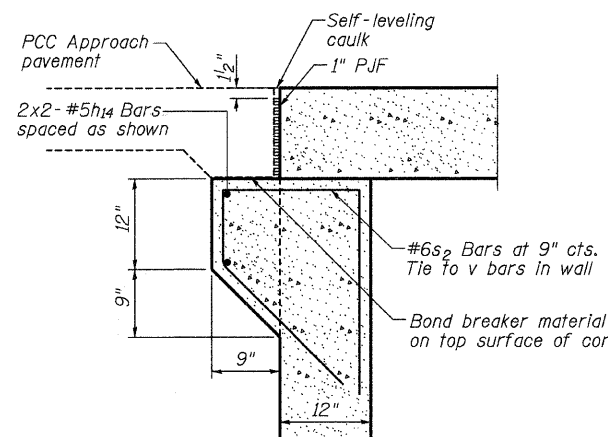
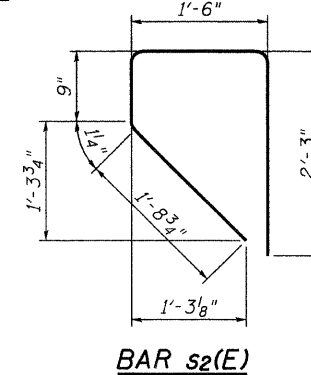
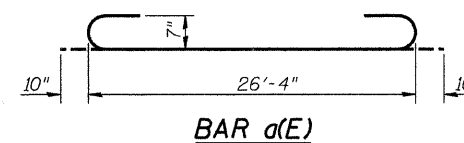


STATE OF ILLINOIS
DEPARTMENT OF TRANSPORTATION



MINIMUM BAR LAPS
(Unless noted otherwise)

	Barrels	Wingwalls
#4 bars	1'-4"	1'-8"
#5 bars	1'-8"	2'-2"
#6 bars	2'-0"	2'-7"
#7 bars	2'-9"	3'-5"

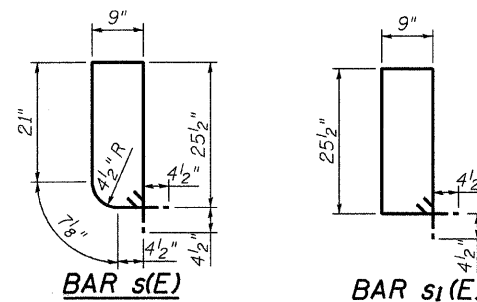


BILL OF MATERIAL

Bar	No.	Size	Length	Shape
a(E)	186	#7	28'-0"	U
a1(E)	186	#7	26'-4"	U
b(E)	20	#4	16'-10"	—
c(E)	54	#4	9'-8"	L
d(E)	50	#4	4'-6"	L
h(E)	82	#6	27'-9"	—
h1(E)	54	#4	27'-6"	—
h2(E)	194	#5	27'-9"	—
h3(E)	22	#6	32'-0"	—
h4(E)	24	#7	8'-0"	—
h5(E)	20	#7	13'-0"	—
h6(E)	10	#7	8'-0"	—
h7(E)	12	#7	8'-0"	—
h8(E)	10	#7	10'-10"	—
h9(E)	5	#7	13'-0"	—
h10(E)	12	#7	11'-0"	—
h11(E)	10	#7	13'-6"	—
h12(E)	5	#7	13'-2"	—
h13(E)	32	#7	10'-0"	—
h14(E)	8	#5	19'-0"	—
s(E)	31	#4	6'-4"	I
s1(E)	31	#4	6'-6"	I
s2(E)	98	#6	6'-4"	I
v(E)	360	#5	7'-9"	—
v1(E)	216	#4	3'-0"	—
v2(E)	16	#4	12'-6"	—
Concrete Box Culverts			Cu Yd	193.7
Reinforcement Bars, Epoxy Coated			Pound	40,270

PAVEMENT SUPPORT CORBEL

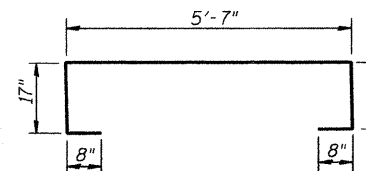
See Plan for limits (Wall reinf. not shown for clarity)



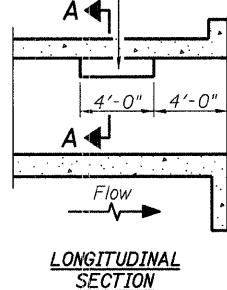
BARS h4(E) THRU h12(E)

BAR	A	B
h4	5'-0"	2'-8 5/8"
h5	10'-0"	2'-8 5/8"
h6	10'-3"	2'-7 7/8"
h7	5'-0"	1'-10 1/8"
h8	10'-7"	1'-10 1/8"
h9	10'-0"	10 1/2"
h10	8'-0"	6 1/4"
h11	13'-7"	6 1/4"
h12	10'-2"	2'-1 1/2"

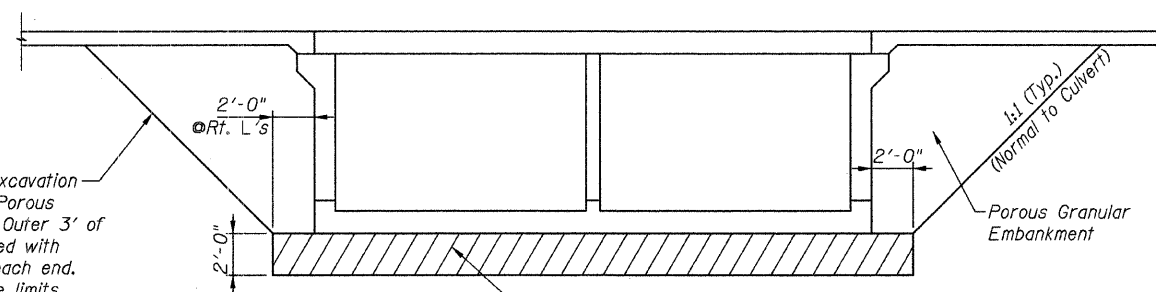
BAR c(E)



Notch formed by rough finished board attached to and removed with form work, each interior wall. (Do not chamfer).



PHOEBE NESTING SITE DETAILS
(Downstream End Only)



DETAIL FOR PAVEMENT REPLACEMENT AND EXCAVATION AND BACKFILL TYPES AND LIMITS

DESIGNED - GLH
CHECKED - GLH
DRAWN - JN
CHECKED - GLH

SHEET NO. 3	ROUTE	SECTION	COUNTY	TOTAL SHEETS	SHEET NO.
4 SHEETS	NE 4th	06-00047-00-BR	WAYNE	8	7
CONTRACT NO. 95617					
FED. ROAD DIST. NO. 7 ILLINOIS FED. AID PROJECT					

CULVERT DETAILS
STRUCTURE NO. 096-6012