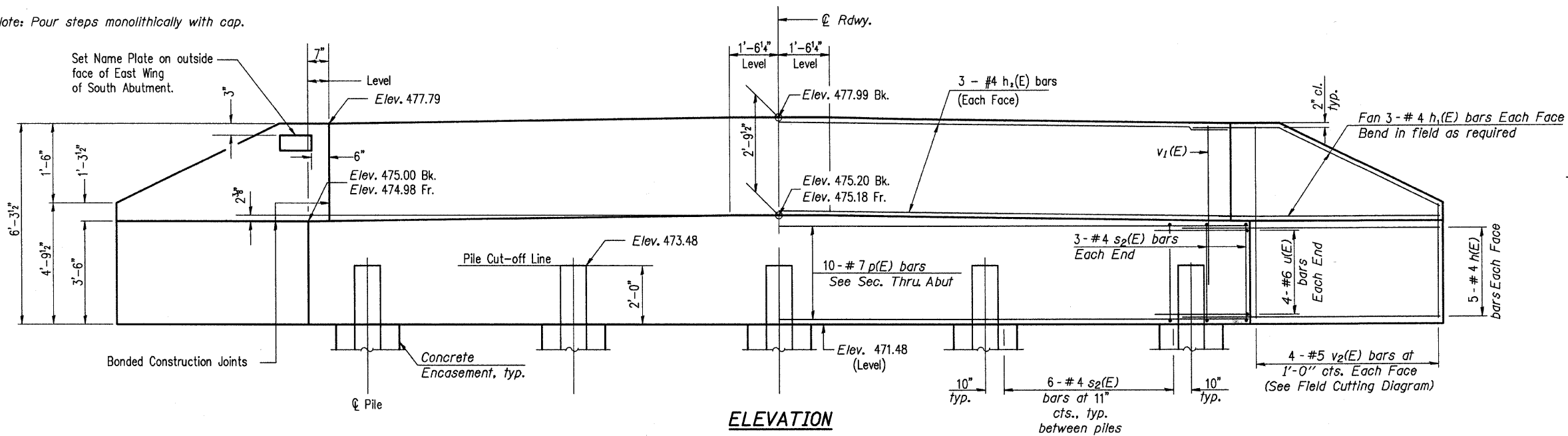
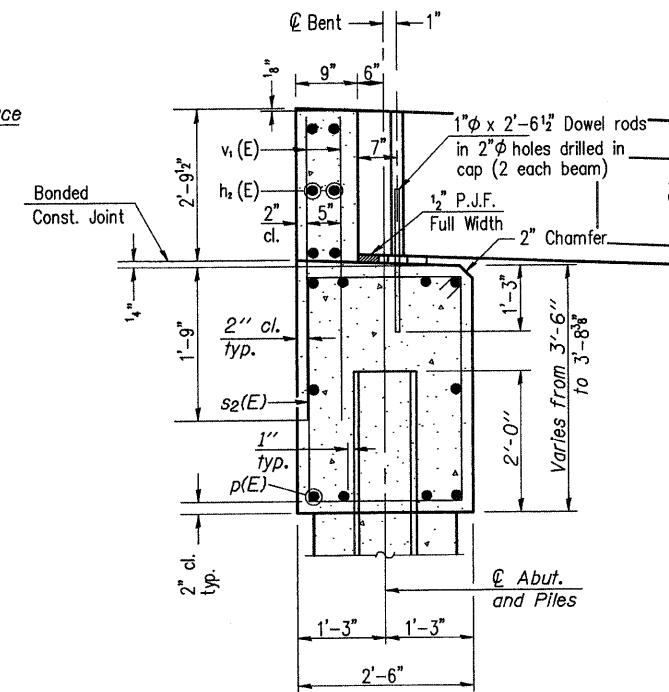


ROUTE	SECTION	COUNTY	TOTAL SHEETS	SHEET NO.
T.R. 186A	05-10127-00-BR	JASPER	15	9
CONTRACT NO. 95620		ILLINOIS	PROJECT BROS-079(140)	

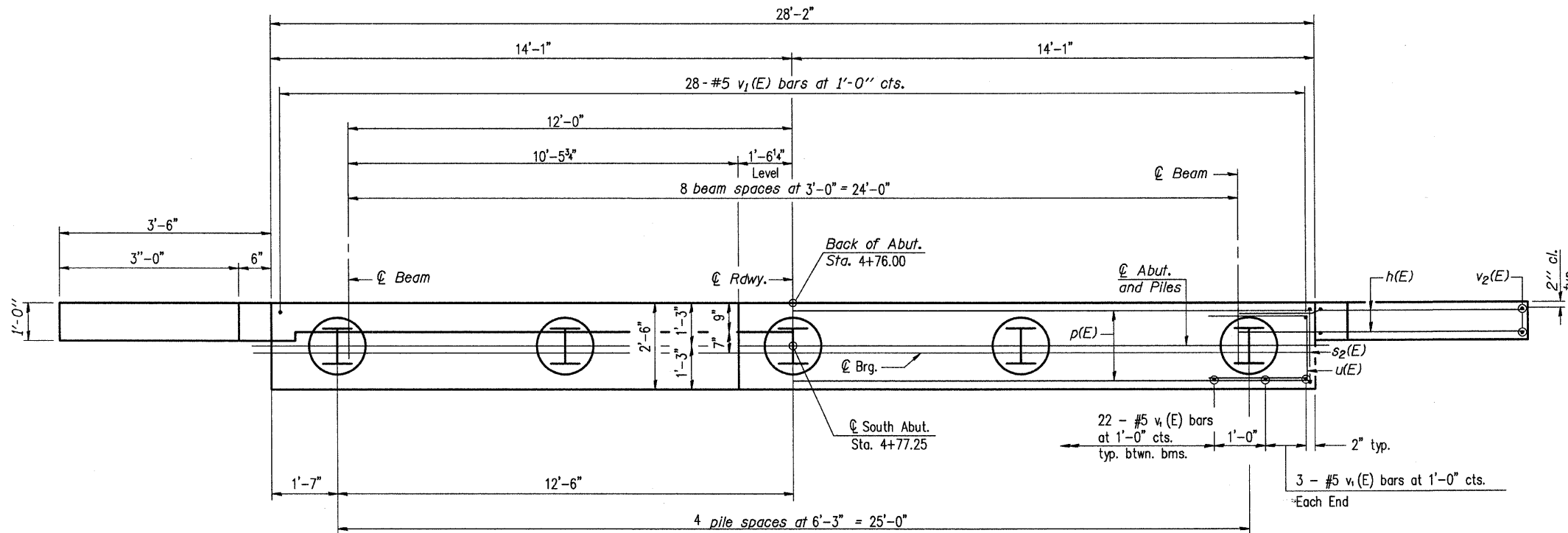
Note: Four steps monolithically with cap.



ELEVATION



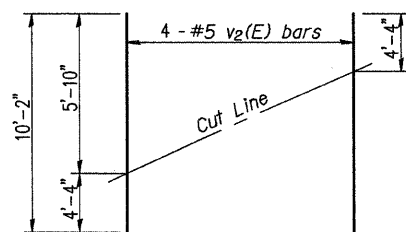
SEC. THRU ABUT.



PLAN

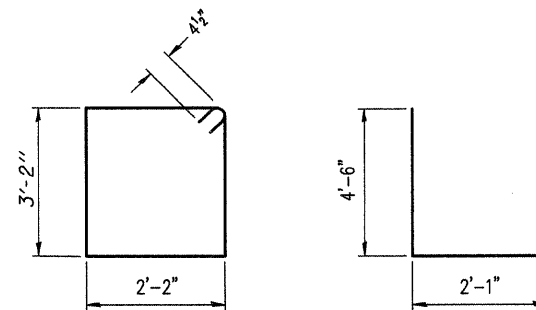
PILE DATA

Type: HP 12X53
 Nominal Required Bearing: Set in Rock
 Factored Resistance Available: 170 kips
 Est. Length: 13.5 Feet
 No. Production Piles: 5
 No. Test Piles: 0
 Estimated Top of Rock Elevation: 465.00
 Rock Socket Depth: 5.00 ft
 Rock Socket Diameter: 2.00 ft



FIELD CUTTING DIAGRAM

Order v2(E) full length. Cut as shown and use remainder of bars in opposite face.



BAR s2(E)

BAR u(E)

BILL OF MATERIAL

Bar	No.	Size	Length	Shape
h(E)	20	#4	5'-0"	—
h1(E)	12	#4	5'-3"	—
h2(E)	6	#4	27'-10"	—
p(E)	10	#7	27'-10"	—
s2(E)	30	#4	11'-5"	□
u(E)	8	#6	11'-1"	—
v1(E)	56	#5	4'-5"	—
v2(E)	8	#5	10'-2"	—
Concrete Structures		Cu. Yd.	13.2	
Reinforcement Bars, Epoxy Coated		Pound	1500	
Furnishing Steel Piles HP 12X53		Foot	67.5	
Setting Piles in Rock		Each	5	
Test Pile		Each	0	
Concrete Encasement		Cu. Yd.	6.7	

- Notes: 1. The Backwall and the portion of the Wingwalls above the bonded construction joint shall be cast against the in-pile beam.
 2. Space reinforcement in cap to miss anchor bolts.

For details of piles and Concrete Encasement, see sheet 11 of 15.

CHARLESTON ENGINEERING, INC.
 CONSULTING ENGINEERS
 105 NORTH KITCHELL
 P.O. BOX 397
 OLNEY, ILLINOIS 62450
 (618) 392-0793
 ILLINOIS DEPARTMENT OF PROFESSIONAL REGULATION REGISTRATION #184 003513

SOUTH ABUTMENT DETAILS
 STRUCTURE NO. 040-3260
 T.R. 186A
 OVER BRUSH CREEK
 SECTION 05-10127-00-BR
 JASPER COUNTY
 STATION 5+14.25

ABUTMENTS