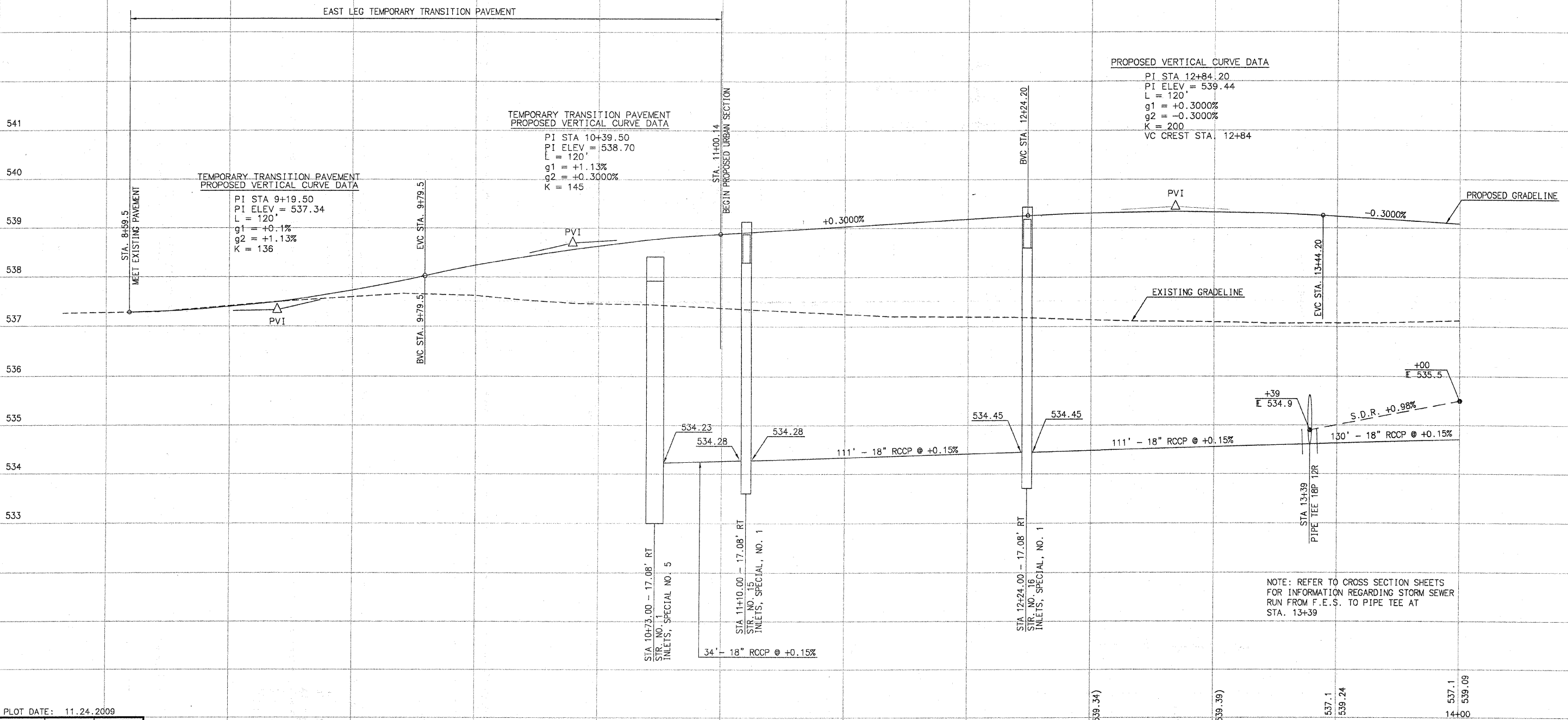


SCALE:
1" = 20' HORIZ.
1" = 1' VERT.

SECTION NO.	COUNTY HIGHWAY	COUNTY	SHEET OF SHEETS
06-00092-02-PV	22	ST. CLAIR	15 OF 63
FHWA REG. NO. 7 ILLINOIS		ARA-5011(297)	
FEDERAL AID PROJECT		CONTRACT # 97415	

PROFILE VIEW - RIGHT SIDE



NOTE: REFER TO CROSS SECTION SHEETS FOR INFORMATION REGARDING STORM SEWER RUN FROM F.E.S. TO PIPE TEE AT STA. 13+39

PLOT DATE: 11.24.2009

	INITIALS	DATE
DESIGNED	R GEORGEN	4/08
CHECKED	T HOLDENER	12/08
DRAWN	R GEORGEN	4/08
CHECKED	T HOLDENER	12/08

PREPARED BY ST. CLAIR COUNTY HIGHWAY DEPARTMENT

537.4	537.39	537.6	537.72	537.6	538.24	537.5	538.64	537.4	538.88	537.3	539.03	537.2	539.18	537.1	539.34	537.1	539.39	537.1	539.24	537.1	539.09
9+00				10+00				11+00				12+00				13+00					14+00

RIGHT SIDE