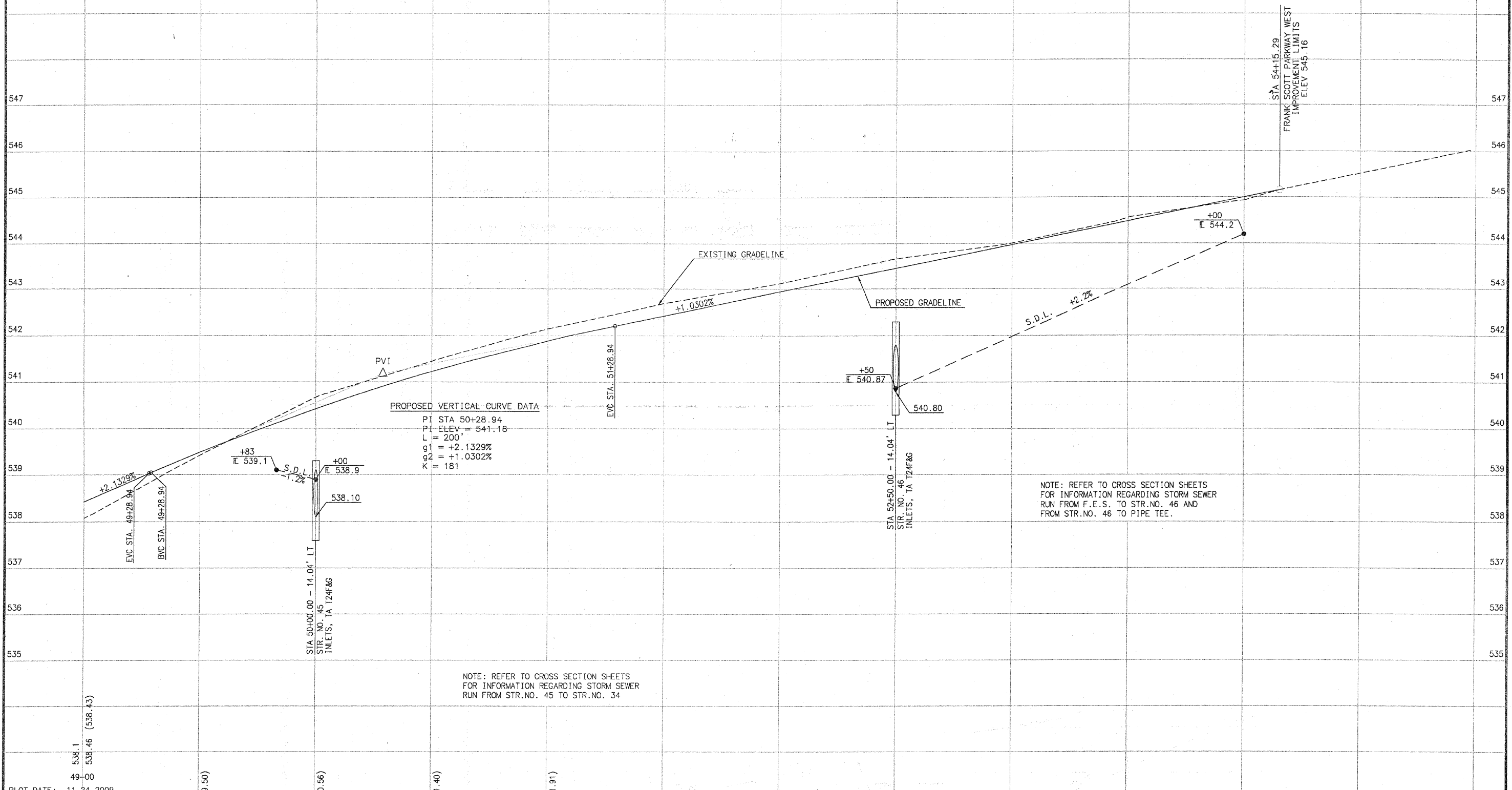


SCALE:  
1" = 20' HORIZ.  
1" = 1' VERT.

SECTION NO.	COUNTY HIGHWAY	COUNTY	SHEET OF SHEETS
06-00092-02-PV	22	ST. CLAIR	32 OF 63
FHWA REG.NO.7	ILLINOIS	ARA-5011 (297)	
FEDERAL AID PROJECT		CONTRACT # 97415	

PROFILE VIEW - LEFT SIDE



PROPOSED VERTICAL CURVE DATA  
 PVI STA 50+28.94  
 PVI ELEV = 541.18  
 L = 200'  
 G1 = +2.1329%  
 G2 = +1.0302%  
 K = 181

NOTE: REFER TO CROSS SECTION SHEETS FOR INFORMATION REGARDING STORM SEWER RUN FROM F.E.S. TO STR.NO. 46 AND FROM STR.NO. 46 TO PIPE TEE.

NOTE: REFER TO CROSS SECTION SHEETS FOR INFORMATION REGARDING STORM SEWER RUN FROM STR.NO. 45 TO STR.NO. 34

PLOT DATE: 11.24.2009

	INITIALS	DATE
DESIGNED	R GEORGEN	04/08
CHECKED	T HOLDENER	12/08
DRAWN	R GEORGEN	04/08
CHECKED	T HOLDENER	12/08

PREPARED BY ST. CLAIR COUNTY HIGHWAY DEPARTMENT

539.4	539.49 (539.50)	540.7	540.43 (540.56)	541.5	541.23 (541.40)	542.2	541.89 (541.91)	542.7	542.43	543.1	542.94	543.7	543.46	544.0	543.97	544.6	544.49	544.9	545.00
		50+00				51+00				52+00				53+00					54+00

LEFT SIDE