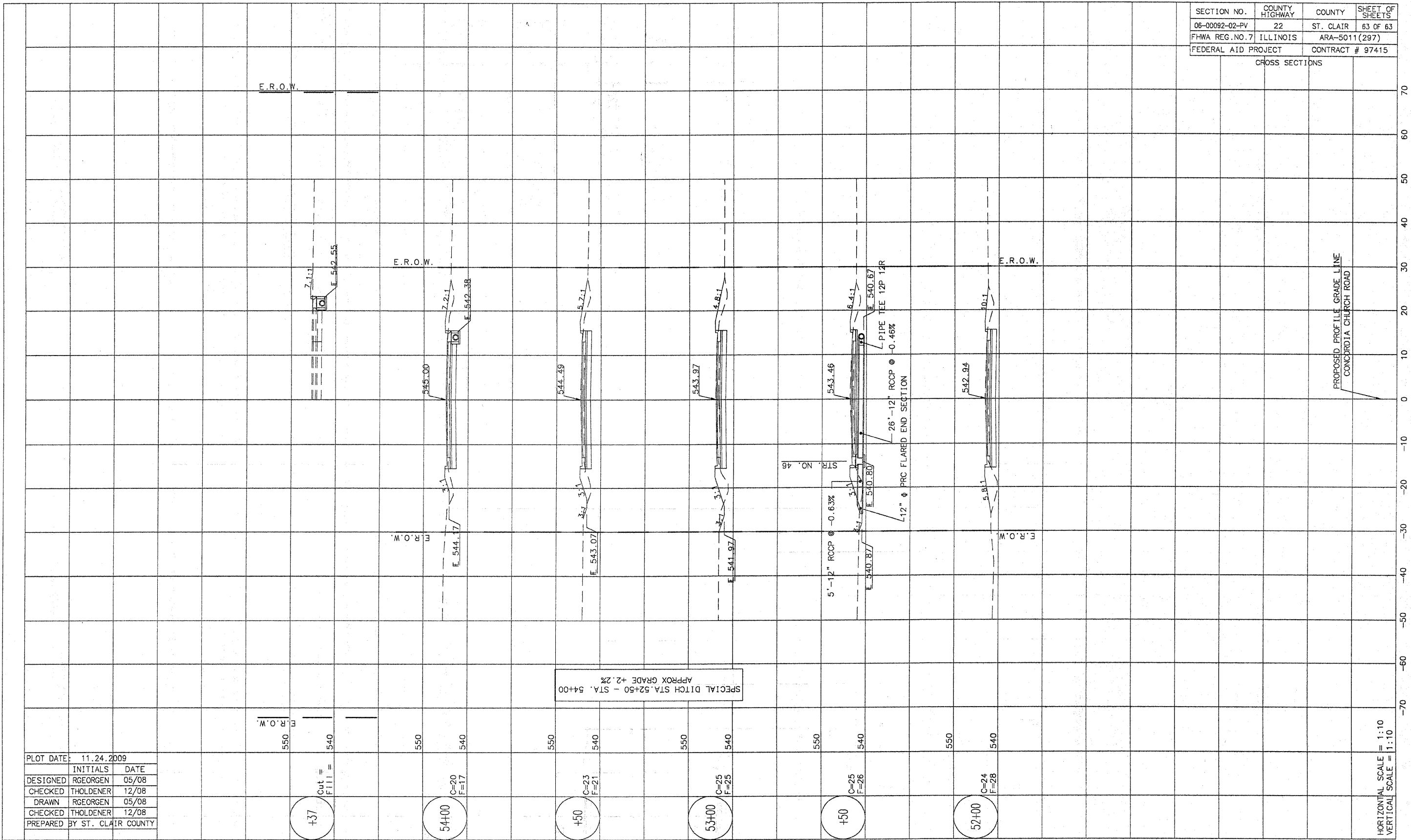


SECTION NO.	COUNTY HIGHWAY	COUNTY	SHEET OF SHEETS
06-00092-02-PV	22	ST. CLAIR	63 OF 63
FHWA REG. NO. 7	ILLINOIS	ARA-5011 (297)	
FEDERAL AID PROJECT	CONTRACT # 97415		

CROSS SECTIONS



PLOT DATE:	11.24.2009	
DESIGNED	RGEORGEN	05/08
CHECKED	THOLDENER	12/08
DRAWN	RGEORGEN	05/08
CHECKED	THOLDENER	12/08
PREPARED	BY ST. CLAIR COUNTY	

+37
Cut =
Fill =

54+00
C=20
F=17

+50
C=23
F=21

53+00
C=25
F=25

+50
C=25
F=26

52+00
C=24
F=28

HORIZONTAL SCALE = 1:10
VERTICAL SCALE = 1:10