

STATE OF ILLINOIS
DEPARTMENT OF TRANSPORTATION
DIVISION OF HIGHWAYS
**PROPOSED
HIGHWAY PLANS**

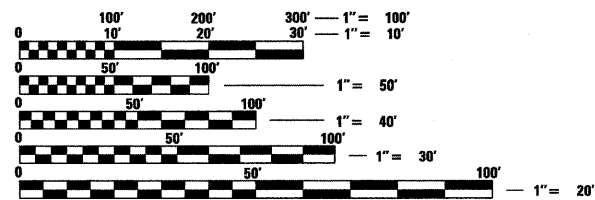
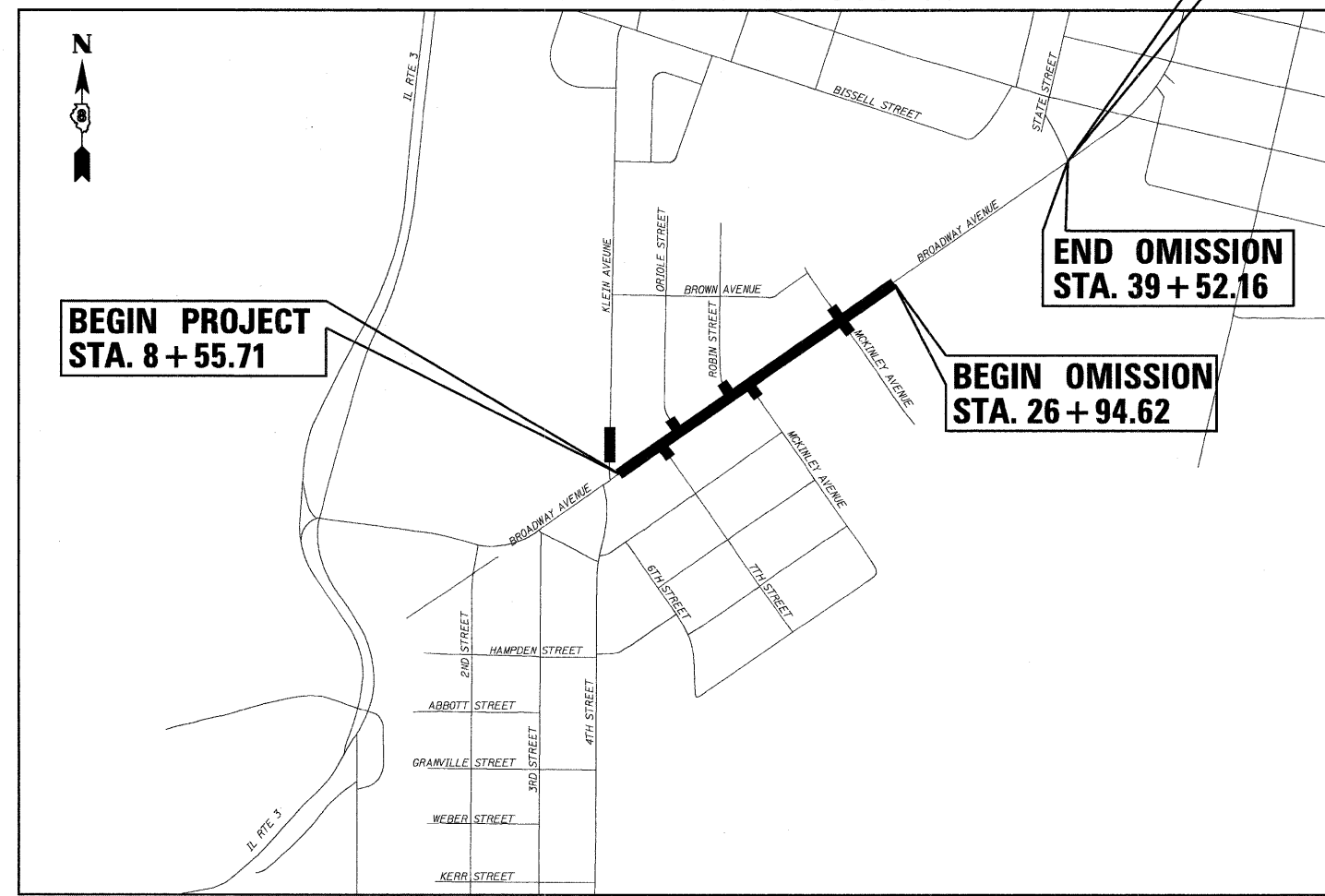
F.A.U. ROUTE 9097
CITY OF VENICE
SECTION 09-00048-00-RS
PROJECT NO. ARA-5011(278)
MADISON COUNTY
JOB NO. C-98-355-09

INDEX OF SHEETS

SHEET NUMBER	DESCRIPTION
1	COVER SHEET
2	GENERAL NOTES AND LEGEND
3	SUMMARY OF QUANTITIES
4-7	TYPICAL SECTIONS - EXISTING
8-10	TYPICAL SECTIONS - PROPOSED
11-12	QUANTITY SCHEDULES
13-19	PLAN AND PROFILE SHEETS
20-21	MAINTENANCE OF TRAFFIC - ADVANCED WARNING SIGNS & STAGES OF CONSTRUCTION
22-23	PAVEMENT MARKING SHEETS
24	MISCELLANEOUS DETAIL SHEETS

STANDARDS

STD. NO.
000001-05
001001-02
001006
420701-02
424001-05
442101-07
606001-04
606306-03
701301-03
701311-03
701606-06
701801-04
701901-01
780001-02



FULL SIZE PLANS HAVE BEEN PREPARED USING STANDARD ENGINEERING SCALES. REDUCED SIZED PLANS WILL NOT CONFORM TO STANDARD SCALES. IN MAKING MEASUREMENTS ON REDUCED PLANS, THE ABOVE SCALES MAY BE USED.

J.U.L.I.E.
JOINT UTILITY LOCATION INFORMATION FOR EXCAVATION
1-800-892-0123
OR 811

DESIGN DESIGNATION
FUNCTIONAL CLASSIFICATION: MINOR ARTERIAL
ADT: 9237 (2009) 11084 (2029)
DHV (2009): 924
DESIGN SPEED: 30 MPH

LOCATION MAP

SCALE: 1" = 500'
NET LENGTH OF PROJECT: 1838.9 LIN. FT. = 0.348 MILES
NET LENGTH OF OMISSION: 1257.5 LIN. FT. = 0.238 MILES
SECTION 35, T. 3 N., R. 10 W., 3RD P.M.

END PROJECT
STA. 39 + 52.16

END OMISSION
STA. 39 + 52.16

BEGIN OMISSION
STA. 26 + 94.62

BEGIN PROJECT
STA. 8 + 55.71

STATE OF ILLINOIS, DEPARTMENT OF TRANSPORTATION

Approved: 12-3-09
Jane Echols
City of Venice, Mayor

Passed: 12-30-09
Lois...
District 8 Engineer of Local Roads & Streets

Releasing for Bid Based on Limited Review: 12-30-09
Mary C. Lamiere
Deputy Director of Highways, Region 5 Engineer



Brian F. Kulick 12/3/09
BRIAN F. KULICK, P.E. No. 49936 DATE
Job No. E090902

Expires 11-30-11

Juneau Associates, Inc. P.C.
CONSULTING ENGINEERS AND LAND SURVEYORS
2100 State Street, P.O. Box 1325
Granite City, Illinois 62040
Phone: (618) 877-1400 / (618) 452-5535
Fax: (618) 452-5541
100 North Research Drive
Edwardsville, Illinois 62025
Phone: (618) 659-0900 / (618) 659-0800
Fax: (618) 659-0941