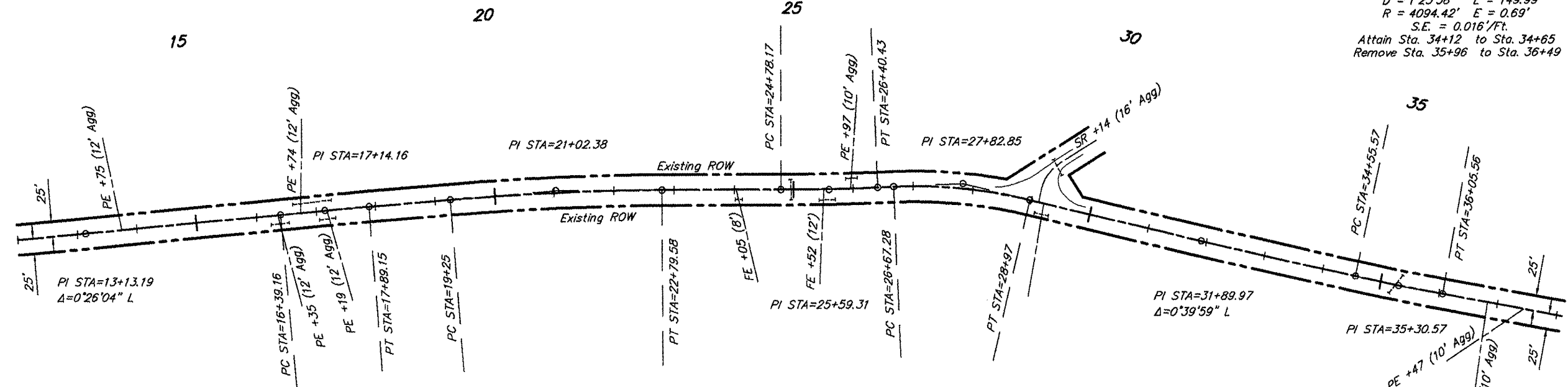


ROUTE	SECTION	COUNTY	TOTAL SHEETS	SHEET NO.
FAS 924	08-00062-00-RS	JOHNSON	10	5
PROJECT NO. ARA-RS-924 (124)			CONTRACT NO. 99372	

**CURVE DATA**  
 $\Delta = 2^{\circ}14'05''$   $T = 81.14'$   
 $D = 1^{\circ}22'38''$   $L = 162.25'$   
 $R = 4160.00'$   $E = 0.79'$   
 $S.E. = 0.015'/ft.$   
 Attain Sta. 24+35 to Sta. 24+87  
 Remove Sta. 25+96 to Sta. 26+48

**CURVE DATA**  
 $\Delta = 2^{\circ}05'56''$   $T = 75.00'$   
 $D = 1^{\circ}23'58''$   $L = 149.99'$   
 $R = 4094.42'$   $E = 0.69'$   
 $S.E. = 0.016'/ft.$   
 Attain Sta. 34+12 to Sta. 34+65  
 Remove Sta. 35+96 to Sta. 36+49

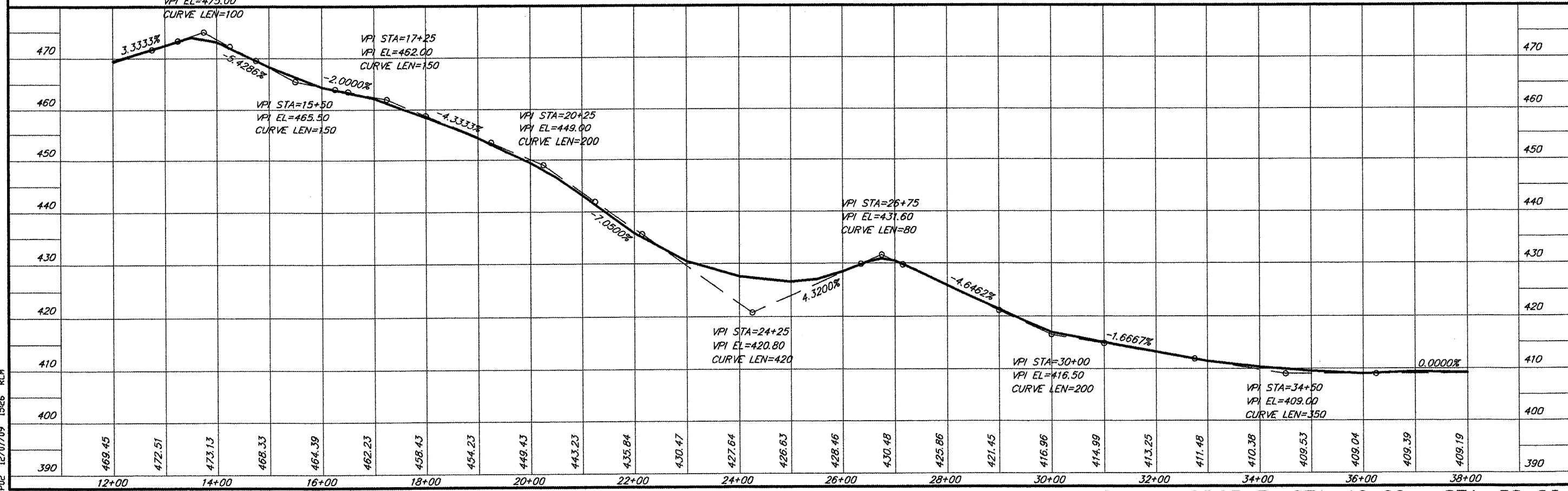


**CURVE DATA**  
 $\Delta = 0^{\circ}58'03''$   $T = 75.01'$   
 $D = 0^{\circ}38'42''$   $L = 150.02'$   
 $R = 8883.99'$   $E = 0.32'$   
 $S.E. = 0.015'/ft.$   
 Normal Crown

**CURVE DATA**  
 $\Delta = 4^{\circ}21'18''$   $T = 177.38'$   
 $D = 1^{\circ}13'42''$   $L = 354.58'$   
 $R = 4665.00'$   $E = 3.37'$   
 $S.E. = 0.015'/ft.$   
 Attain Sta. 18+82 to Sta. 19+34  
 Remove Sta. 22+71 to Sta. 23+23

**CURVE DATA**  
 $\Delta = 15^{\circ}34'36''$   $T = 115.58'$   
 $D = 6^{\circ}46'50''$   $L = 229.73'$   
 $R = 845.00'$   $E = 7.87'$   
 $S.E. = 0.067'/ft.$   
 Attain Sta. 26+48 to Sta. 27+82  
 Remove Sta. 28+59 to Sta. 30+00

SCALES:  
 1" = 200' HOR  
 1" = 20' VER



PLAN & PROFILE STA. 12+00 - STA. 38+00

685 PPO2 12/07/09 1526 RLM