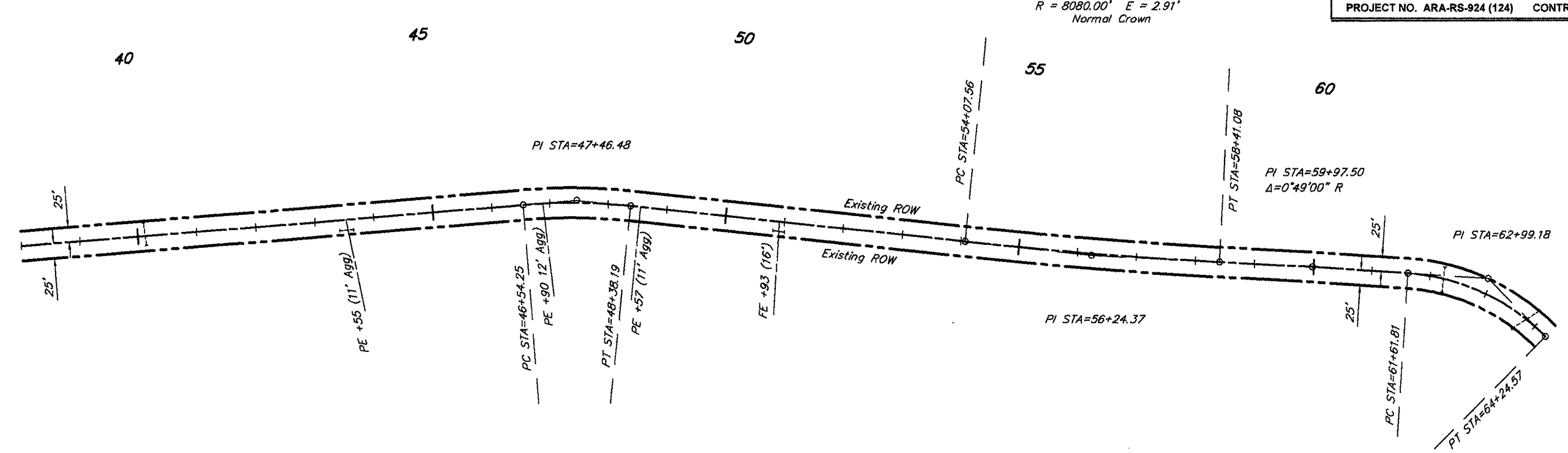


ROUTE	SECTION	COUNTY	TOTAL SHEETS	SHEET NO.
FAS 924	09-00062-00-RS	JOHNSON	10	6
PROJECT NO. ARA-RS-924 (124)			CONTRACT NO. 99372	

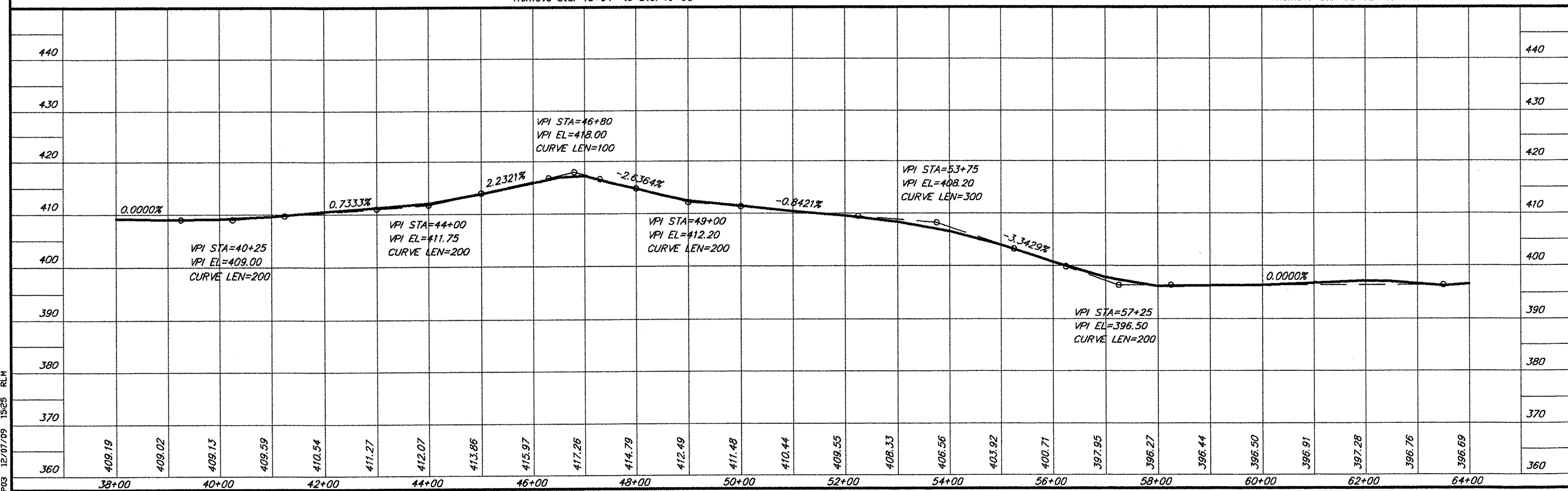
**CURVE DATA**  
 $\Delta = 3^{\circ}04'27''$   $T = 216.82'$   
 $D = 0^{\circ}42'33''$   $L = 433.53'$   
 $R = 8080.00'$   $E = 2.91'$   
 Normal Crown



SCALES:  
 1" = 200' HOR  
 1" = 20' VER

**CURVE DATA**  
 $\Delta = 10^{\circ}32'20''$   $T = 92.23'$   
 $D = 5^{\circ}43'46''$   $L = 183.94'$   
 $R = 1000.00'$   $E = 4.24'$   
 $S.E. = 0.060'/ft.$   
 Attain Sta. 45+60 to Sta. 46+89  
 Remove Sta. 48+04 to Sta. 49+33

**CURVE DATA**  
 $\Delta = 41^{\circ}14'49''$   $T = 137.37'$   
 $D = 15^{\circ}41'51''$   $L = 262.76'$   
 $R = 365.00'$   $E = 24.99'$   
 $S.E. = 0.080'/ft.$   
 Attain Sta. 60+52 to Sta. 62+05  
 Remove Sta. 63+82 to Sta. 65+35



PLAN & PROFILE STA. 38+00 - STA. 64+00

685 PFO3 12/07/09 1525 RLM