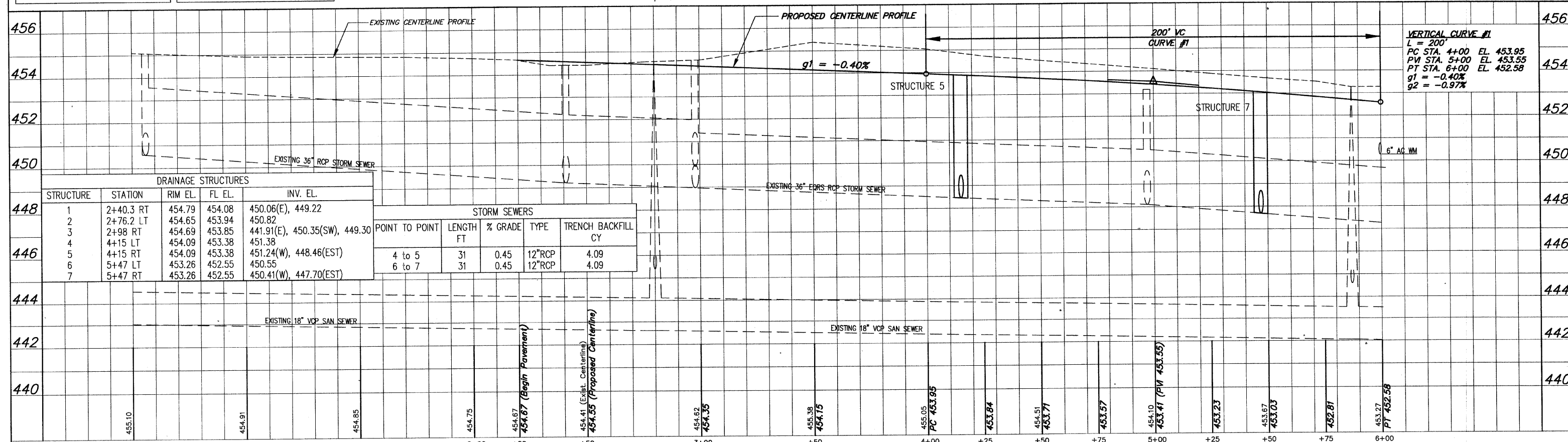


BENCH MARKS

TRM1 - EL. 456.46
Top Bolt Betw. "E" & "L" in Mueller on F.H. N.E. Cor. McFall & DuQuoin St. See Pg. 20 Bk. 577

TRM2 - EL. 456.14
Top Bolt Betw. "E" & "L" in "Mueller" on F.H. N.E. Cor. Fourth & DuQuoin St. See Pg. 20 Bk. 577



DRAINAGE STRUCTURES				
STRUCTURE	STATION	RIM EL.	FL EL.	INV. EL.
1	2+40.3 RT	454.79	454.08	450.06(E), 449.22
2	2+76.2 LT	454.65	453.94	450.82
3	2+98 RT	454.69	453.85	441.91(E), 450.35(SW), 449.30
4	4+15 LT	454.09	453.38	451.38
5	4+15 RT	454.09	453.38	451.24(W), 448.46(EST)
6	5+47 LT	453.26	452.55	450.55
7	5+47 RT	453.26	452.55	450.41(W), 447.70(EST)

STORM SEWERS				
POINT TO POINT	LENGTH FT	% GRADE	TYPE	TRENCH BACKFILL CY
4 to 5	31	0.45	12"RCP	4.09
6 to 7	31	0.45	12"RCP	4.09

VERTICAL CURVE #1
L = 200'
PC STA. 4+00 EL. 453.95
PM STA. 5+00 EL. 453.55
PT STA. 6+00 EL. 452.58
g1 = -0.40%
g2 = -0.97%